

NuTec LED Lighting Catalogue 2023 Vol. 1

T8 TUBES



BULBS



PANEL LIGHTS



HIGHBAYS



STREET LIGHTS



SOLAR LIGHTS



FLOOD LIGHTS



SOLAR BULBS



EXPLOSION PROOF



EMERGENCY LIGHTS



FIXTURES





LED Indoor Lighting Series



Advantages:

- High brightness
- Reliable power supply/driver.
- Suitable to be used at
 - Clothing or jewelry showroom,
 - Office, Hotel,
 - Exhibition Hall
 - and others are where need illumination.

| EMERGENCY T8 TUBE | | | | | | |
|-------------------|-------|---------------|---------|------------|-----|-------|
| Part Number | Power | Input Voltage | Lumens | Beam Angle | CRI | PF |
| NTPC-T8E18 | 18W | 180-277Vac | 1,800lm | 110 | >70 | >0.90 |

Advantages:

Backup Time: >45 min.

- Industrial Standard
- Suitable to be used at Office, Hotel, Exhibition Hall, Production Line.



INDUSTRIAL TUBE SERIES

| INDUSTRIAL TUBE SERIES | | | | | | |
|------------------------|-------|---------------|---------|------------|-----|-------|
| Part Number | Power | Input Voltage | Lumens | Beam Angle | CRI | PF |
| NTPC-T8009 | 9W | 100-240Vac | 900lm | 110° | >70 | >0.90 |
| NTPC-T8H12W-0.6m | 12W | 100-240Vac | 2,000lm | | | |
| NTPC-T8018 | 18W | 100-277Vac | 2,800lm | | | |
| NTPC-T8020 | 20W | | 3,600lm | | | |
| FULL PC TUBE SERIES | | | | | | |
| NTPC-T82000L-12w | 12W | 100-277Vac | 2,000lm | 140 | >70 | >0.90 |

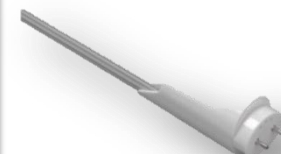
T8 TUBE WITH MOTION SENSOR

| Part Number | Power | Input Voltage | Lumens | Beam Angle | CRI | PF |
|---------------|-------|---------------|---------|------------|-----|-------|
| NTPC-T8018-MS | 18W | 100-240Vac | 1,800lm | 110 | >70 | >0.90 |

Advantages:

Sense Time-out: 10-15secs.

- Industrial Standard
- Suitable to be used at
 - Hallways or other areas with not much traffic but needed some lights.
 - Dimmed after 10-15 sec. without movement.
 - automatic 100% light-up if movement detected.





LED Indoor Lighting Series

LED BULB SERIES

Advantages:

- Direct replacement of traditional CFL & incandescent bulbs.
- Polycarbonate body
- Lower wattages to reduce energy consumption
- >100lm/w



| Part Number | Power | Input Voltage | Lumens | CRI | PF | Brightness Equivalent |
|---------------|-------|---------------|--------|-----|-------|-----------------------|
| NTPC-SBL05-XX | 5W | 100-240Vac | 500lm | >70 | >0.50 | 12w |
| NTPC-SBL09-XX | 9W | | 900lm | | | 26W |

Application: Hotel, show room, office, house, exhibit hall, other

LED LOWBAY BULB SERIES

Advantages:

- **IP65**
- 150lm/w
- E27, with adapter for E40 used
- Replacement for lowbay's <7meter in height.



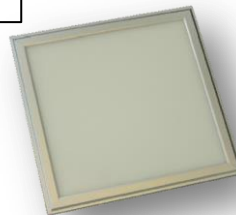
| Part Number | Power | Input Voltage | Lumens | CRI | PF | Brightness Equivalent |
|-------------|-------|---------------|--------|-----|-------|-----------------------|
| NTPC-BL070N | 70W | 185-277Vac | 9000lm | >80 | >0.90 | 150w |

Application: Warehouses with <7m ceiling height

LED PANEL LIGHT SERIES

Advantages:

- 600*600mm / 600*1200mm avail. sizes
- 40w – 60w design
- Slim Type
- Can be 5000-6500K depends to the req.
- SMD 4014, aluminum case



| Part Number | Power | Input Voltage | Lumens | Beam Angle | CRI | PF |
|------------------|-------|---------------|---------|------------|-----|--------|
| NTPC-LPL-2AL-48W | 48W | 100-240Vac | 3,600lm | 120° | >80 | >0..90 |



LED Indoor Lighting Series

HIGHBAY GEN. 5-III SERIES

Advantages:

- With SMDLED 2835 component w/c has high brightness and long lifespan.
- Surge protection up to 380V
- High efficiency cooling system.
- Product meet IP65 standard.
- Power supply ranging from 180-277Vac, 50/60Hz.
- High performance of UGR <22
- Photo Sensor: **Optional**



| Part Number | Power | Input Voltage | Lumens | Beam Angle | CRI | PF | Brightness Equivalent |
|---------------|-------|---------------|----------|------------|-----|------|-----------------------|
| NTPC-GHB-100W | 100W | 180-277Vac | 15,000lm | 120° | >80 | >0.9 | 200W |
| NTPC-GHB-150W | 150W | | 22,500lm | | | | 300W |
| NTPC-GHB-160W | 200W | | 27,000lm | | | | 400W |

Application: warehouse, production line, mall, hyper market, etc.



LED Outdoor Lighting Series

LED FLOOD LIGHT SERIES (gen.4)

Advantages:

- Lumileds LED component.
- High Brightness & long lifespan.
- High efficiency cooling system.
- Meet IP65 standard.
- High light transmission glass protection cover.
- Power supply range 100-277Vac, 50/60Hz.



| Part Number | Power | Input Voltage | Lumens | Beam Angle | CRI | PF | Brightness Equivalent |
|------------------|-------|---------------|----------|------------|-----|-------|-----------------------|
| NTPC-FL050-G4-xx | 50W | 100-277Vac | 6,500lm | 120° | >70 | >0.90 | 100W |
| NTPC-FL070-G4-xx | 80W | | 10,400lm | | | | 150W |
| NTPC-FL100-G4-xx | 100W | | 13,000lm | | | | 200W |
| NTPC-FL150-G4-xx | 150W | | 19,500lm | | | | 300W |
| NTPC-FL200-G4-xx | 200W | | 26,000lm | | | | 400W |
| NTPC-FL300-G4-xx | 300W | | 39,000lm | | | | >500W |
| NTPC-FL400-G4-xx | 400W | | 52,000lm | | | | >500W |

Application: Advertisements, Building envelopes, Garage, Tunnel, etc.

LED HIGH POLE LIGHT (*SPORTS LIGHT*) SERIES (gen.5)

Advantages:

- Heat sink system consists of Aluminum alloy
- **Philips LED component** which have better lighting performance.
- Each Modular is rotatable.
- Energy saving up to 80%.
- Conforming to IP65 standard.



| Part Number | Power | Input Voltage | Lumens | Beam Angle | CRI | PF | Brightness Equivalent |
|-------------|-------|---------------|----------|-------------------------------------|-----|-------|-----------------------|
| NTPC-FL5120 | 120W | 100-277Vac | 16,800lm | 15/40/60/90/70X30, AN-Asymmetric 15 | >70 | >0.90 | 300W |
| NTPC-FL5180 | 180W | | 25,200lm | | | | 500W |
| NTPC-FL5240 | 240W | | 33,600lm | | | | 600W |
| NTPC-FL5360 | 360W | | 50,400lm | | | | 800W |
| NTPC-FL5480 | 480W | | 67200lm | | | | 1000W |
| NTPC-FL5600 | 600W | | 84,000lm | | | | 1200W |

Application: Stadium, High Mast Lighting. Etc.



LED Outdoor Lighting Series

LED FLOOD LIGHT – EXPLOSION PROOF SERIES

Advantages:

- with International (US) Bridgelux LED component
- optimized heat fins for natural convection.
- High efficiency cooling system.
- UL CERT.
- IP68 rating.
- Meanwell power supply
- High light transmission glass protection cover.



| Part Number | Power | Input Voltage | Lumens | IP Rating | CRI | PF | Brightness Equivalent |
|---------------|-------|---------------|----------|-----------|-----|-------|-----------------------|
| NTPC-FL030-G6 | 30W | 100-277Vac | 3,000lm | IP 68 | >70 | >0.90 | 65W |
| NTPC-FL060-G6 | 60W | | 6,000lm | | | | 150W |
| NTPC-FL100-G6 | 100W | | 10,000lm | | | | 200W |
| NTPC-FL120-G6 | 120W | | 12,000lm | | | | 250W |
| NTPC-FL185-G6 | 185W | | 18,500lm | | | | 400W |

Application: Petroleum Factories, Gas stations, etc.

EXPLOSION PROOF CASING FOR LED T8 TUBE

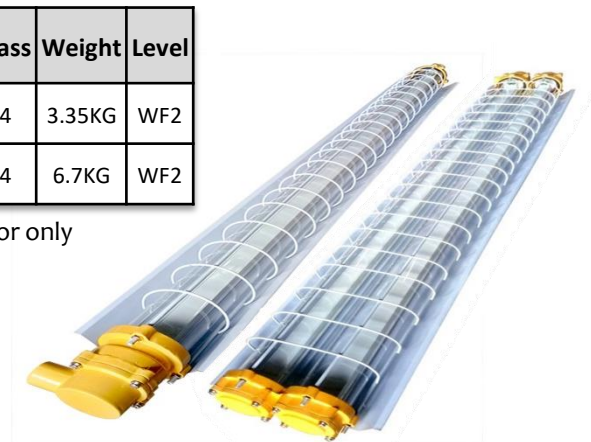
Lamp Structure design with excellent outlook, Aluminum body, exposure proof with Level WF2. Apply in Acid environment, tempered glass with Aluminum ring where able to prevent bent or crack.

Apply LED T8 Tube inside the tempered glass

Implement standard GB3836. 1-2000, GB3836. 2-2000
CLASS I IP54

| Part Number | IP Class | Weight | Level |
|-------------|----------|--------|-------|
| NTPC-EPC001 | IP54 | 3.35KG | WF2 |
| NTPC-EPC002 | IP54 | 6.7KG | WF2 |

Application: Indoor only





LED Outdoor Lighting Series

LED STREET LIGHT – Gen. 5-iii SERIES

Advantages:

- Model concept to accelerate heat dissipation.
- **Lumiled Luxeon LED (5050)** component which have excellent brightness.
- Low light degradation.
- Tempered Glass for easy maintenance.
- Aluminum material body (6063-T5)
- Branded power supply.
- Suitable to be use:
highway, main road, sub road, other areas.
- IP65 standard
- Optional: **Photo sensor**



| Part Number | Power | Input Voltage | Lumens /Watt | Beam Angle | CRI | PF | Brightness Equivalent |
|------------------------|-------|---------------|--------------|--------------|-----|-------|-----------------------|
| NTPC-SL040-xxxx-G5-iii | 40W | 100-277Vac | 140lm/w | TYPE II, III | >70 | >0.90 | 80W |
| NTPC-SL060-xxxx-G5-iii | 60W | | | | | | 120W |
| NTPC-SL080-xxxx-G5-iii | 80W | | | | | | 160W |
| NTPC-SL100-xxxx-G5-iii | 100W | | | | | | 200W |
| NTPC-SL120-xxxx-G5-iii | 120W | | | | | | 250W |
| NTPC-SL150-xxxx-G5-iii | 150W | | | | | | 300W |

Application: For street lightings

LED STREET LIGHT – VALUE SERIES

Advantages:

- Model concept to accelerate heat dissipation.
- **3030SMD LED** component which have higher JC and excellent brightness.
- Low light degradation.
- Wide angle 145 degree horizontal and 70 degree vertical
- Suitable to be use:
highway, main road, sub road, village.
- IP65 standard
- 10KV Surge Protection
- Photo Sensor: Optional



| Part Number | Power | Input Voltage | Lumens | Beam Angle | CRI | PF |
|--------------|-------|---------------|----------|------------|-----|-------|
| NTPC-SVSL060 | 60W | 100-277Vac | 7,800lm | 70° & 145° | >70 | >0.90 |
| NTPC-SVSL100 | 100W | | 13,000lm | | | |
| NTPC-SVSL150 | 150W | | 19,500lm | | | |
| NTPC-SVSL200 | 200W | | 26,000lm | | | |

Application: For street lightings



LED Outdoor Lighting Series

LED SOLAR STREET LIGHT SERIES

Advantages:

- All solar powered embracing green technology
- Plug 'n play function
- Max 3 days light-up during rainy days (optimized lighting)



| Part Number | Solar Panel Specs | Battery Specs | Lumens | Mounting Height (reference only) |
|----------------|-----------------------|---------------|-------------|----------------------------------|
| NTPC-SZ040-SSL | 50W, 18V monocrystal | 24AH/12V | 130-140lm/w | 6-7 meter |
| NTPC-SZ060-SSL | 70W, 18V monocrystal | 36AH/12V | 150-160lm/w | 7-8 meter |
| NTPC-SZ080-SSL | 100W, 18V monocrystal | 42AH/12V | 150-160lm/w | 8-9 meter |
| NTPC-SZ100-SSL | 130W, 18V monocrystal | 54AH/12V | 130-140lm/w | 10-12 meter |

Application: For street lightings

LED SOLAR FLOOD LIGHT SERIES

Advantages:

- Light body: 300x290x55mm
- Solar Panel: 530x350x17mm
- Package size: 575x395x115mm
- N.W: 4.2kgs G.W:5.9kgs
- With Blinker Light feature for emergency purposes



| Part Number | Solar Panel Specs | Battery Specs | Lumens |
|---------------|----------------------|-------------------------------|-------------|
| NTPC-PSFL200W | 6V, 40W polycrystal | 32500mAH, LiFePO ₄ | 150-160lm/w |
| NTPC-BSFL045W | 120W, 5V polycrystal | 65AH/3.2V LiFePO ₄ | |

Application: For perimeter / street lightings



LED Outdoor Lighting Series

LED SOLAR STREET LIGHT SERIES

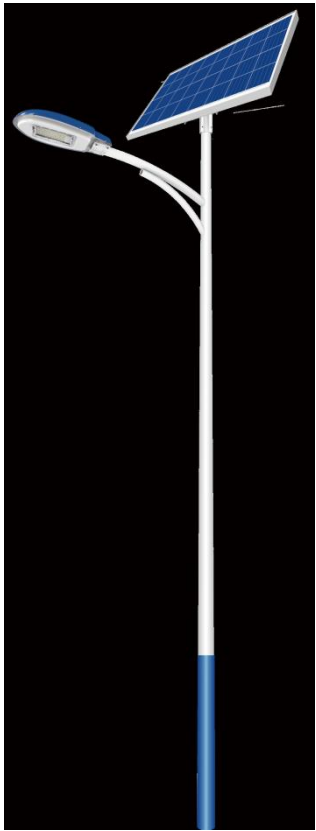
Advantages:

- All solar powered embracing green technology
- Plug 'n play function
- Special design for village/subdivisions purposes



| Part Number | Solar Panel Specs | Battery Specs | Lumens | Mounting Height (reference only) |
|-----------------|---------------------|-------------------------------|-------------|----------------------------------|
| NTPC-BSSL-080W | 80W, 5V polycrystal | 70AH/3.2V LiFePO ₄ | 130-140lm/w | 6-8 meter |
| NTPC-PCSSL-300W | 33W, 5V polycrystal | 30AH 32700LiFePO ₄ | 80-90lm/w | 4-5 meter (VILLAGE LIGHTING) |

Application: For street lightings / Village Street Lightings





LED Outdoor Lighting Series

LED SOLAR GARDEN LIGHT SERIES

Advantages:

- Original patent design, independent mould
- All night lighting
- Integrated design, modular production, 1 screw installation
- 3.2V low voltage design, safe and reliable



| Part Number | Solar Panel Specs | Battery Specs | Installation Distance | Mounting Height (reference only) |
|--------------|---------------------|-------------------------------|-----------------------|----------------------------------|
| NTPC-NSGL010 | 18W, 5V polycrystal | 13AH/3.2V LiFePO ₄ | 10-15 meters | 3-4 meter |
| NTPC-NSGL015 | 30W, 5V polycrystal | 26AH/3.2V LiFePO ₄ | 10-15 meters | 4-5 meter |

Application: For perimeter / street lightings



Other LED Lightings / Fixtures

EMERGENCY LIGHT SERIES

Advantages

- 100-240VAC voltage operation
- 20 pcs super bright SMD LED
- Built-in Battery 6V 2000mAh
- Charge Time: 15-24 hours
- Discharge time: >8hrs @ full charge
- Conversion time: =<0.2second
- IP Class: IP20
- Insulation: II, Range: 80m²
- Operation Temperature: -10°C~40°C

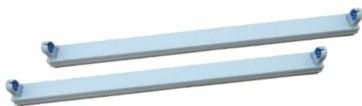


| Part Number | Power | IP CLASS |
|----------------|-------|----------|
| NTPC-EMERL004W | 4w | IP20 |
| NTPC-EMERL010W | 10w | IP20 |

BOX TYPE FIXTURES

Advantages:

- Single Tube available in 0.6m/1.2m length of tube
- Housing and cover made of advance material (iron)
- The surface with white coating that protects against corrosion
- Lamp source for LED T8
- Without ballast or starter, save cost of maintenance, only for LED T8 tube
- End to end wire connection



| Part Number | Application |
|--------------|----------------------|
| NTPC-T8F-BT | For 1.2m tube length |
| NTPC-T8-BT06 | For 0.6m tube length |

*** LOUVER TYPE AVAILABLE UPON INQUIRY**

EMERGENCY EXIT SIGNAGE

Advantages

- Maintain working mode
- Wall and ceiling mounted
- 220Vac Voltage Operation
- Super Bright SMDLED
- Built-in battery 3.6V @ 300mAH
- Charge Time: 15-24 hrs.
- Discharge Time: >90mins.
- IP Rating: IP20



| Part Number | Power | IP CLASS |
|-----------------|-------|----------|
| NTPC-EXITL003-D | 3w | IP20 |

WEATHER PROOF CASING

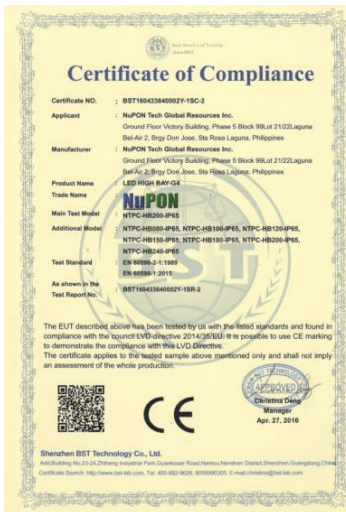
Advantages:

- Single or Double Tube available in 0.6m/1.2m/1.5m length of tube
- 127.8cm x 112cm x 100cm
- Polycarbonate Whole Body, UV Stabilized
- Stainless Metal Clips – Long Last Locking
- Brittle Lock Proof
- Rewired for LED, double end.



| Part Number | Application |
|---------------|----------------------------------|
| NTPC-WPC0.6-S | Single type for 0.6m length tube |
| NTPC-WPC1.2-S | Single type for 1.2m length tube |
| NTPC-WPC0.6-D | Double type for 0.6m length tube |
| NTPC-WPC1.2-D | Double type for 1.2m length tube |

Certifications





Project Reference

(visit our website for more project list)



LEAR CORPORATION – CEBU

- SUPPLY & INSTALLATION OF HIBAY = 670 UNITS
- SUPPLY & INSTALLATION OF T8 TUBES = 6,800 PCS
- SUPPLY OF SOLAR FLOODLIGHT = 50 SETS



HITACHI TERMINAL – OLONGAPO (SBFZ)

- SUPPLY & INSTALLATION OF HIBAY = 109 UNITS
- SUPPLY OF T8 TUBES = 290 PCS



COCA COLA – BACOLOD BRANCH

- SUPPLY & INSTALLATION OF HIBAY = 95 UNITS
- SUPPLY & INSTALLATION OF STREETLIGHT = 6PCS



TONGLUNG PHILS. METAL – OLONGAPO (SBFZ)

- SUPPLY & INSTALLATION OF HIBAYS = 161 UNITS
- SUPPLY OF T8 TUBES = 2,400 PCS
- SUPPLY OF BULBS = 200 PCS
- SUPPLY OF FLOOD LIGHT = 60 PCS



JOTUN PHILIPPINES – BATANGAS

- SUPPLY OF HIBAYS = 155 UNITS



PRIFOODS – CEBU

- SUPPLY & INSTALLATION OF HIBAYS = 282 UNITS
- SUPPLY & INSTALLATION OF T8 TUBES = 360 PCS



Project Reference

(visit our website for more project list)



FURUKAWA, LTI – LAGUNA

- SUPPLY & INSTALLATION OF STREET LIGHTS = 18UNITS
- SUPPLY OF EMERGENCY LIGHTS = 50PCS
- SUPPLY OF T8 TUBES = 180PCS

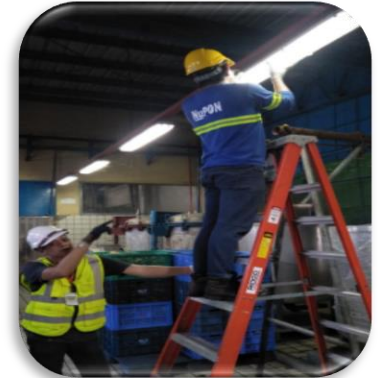


YUTAKA MFG. PHILS – LAGUNA

- SUPPLY & INSTALLATION OF T8 TUBES = 700PCS

HONEYWELL CEASA – OLONGAPO (SBFZ)

- SUPPLY & INSTALLATION OF T8 TUBES = 400PCS

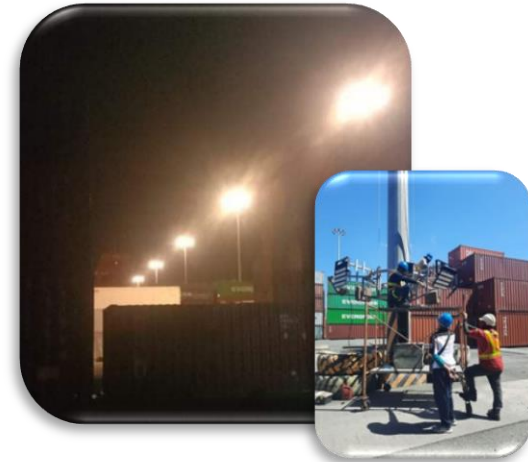


KLT FOODS - CAVITE

- SUPPLY & INSTALLATION OF T8 TUBES = 200PCS

MOOG CONTROLS – BAGUIO

- SUPPLY & INSTALLATION OF T8 TUBES = 660PCS



SBITC - OLONGAPO

- SUPPLY & INSTALLATION OF HIGHMAST LIGHT = 66 UNITS



Some of our Satisfied LED Customer

ADRISTE PHILIPPINES
AJINOMOTO
ALAGON ELECT.
ALMEX TECH, INC.
AMKOR TECH.
ATOMED
CARTITS BUILDERS
CEBU TOYO
CENTRAL SEAFOODS
CONTINENTAL TEMIC
CWC INTERNATIONAL
CYPRESS MANUFACTURING
DAIHO PHILS.
DELFINGEN
DOKI SOUTH BREADS
EBECOR
EPSON PHILIPPINES
ESSILOR BATAAN
EXAS
EZSET
FUNAI
FURUKAWA
GCS ENGINEERING
GOTO DENSHI
HDK PHILIPPINES
HITACHI CABLE

HITACHI TERMINAL
HONEYWELL CEASA
INLAND WAREHOUSING
ISHIDA PHILS.
JAE
JOTUN
KATOLEC
KERRY FOODS
KLT FOODS
KORLANDA CORPORATION
KORYO
KOUSHIN
KYOCERA CRYSTAL DEVICE
LA ROSE NOIRE PHILIPPINES
LEAR AUTOMOTIVE
LINDBERG
MAKOTO METAL
MANILA AMC MACHINERY
MATIMCO INC.
MIKUNI TERMINALS
MCPI CORP.
MOOG CONTROLS
NKC
OF SYSTEM PHILIPPINES
OPTIMA TYPOGRAPHIC
OPTODEV INC.

PERPETUAL SUCCOUR
PETRON FREEPORT
PHILIPPINE KENKO
PHOENIX SEMICON.
POLYTRADE
PRIFOODS
PUREFOODS
SAN MIGUEL
SANTECH
SEKISUI JUCHI
SHIN-ETSU MAGNETIC
SHINSEI PRINTING
SHOWA ALUMINUM
SIA ENGINEERING
SBITC
SMT PHILIPPINES
SUMI PHILS.(SPWS)
SUNPOWER PHILIPPINES
SWISS SENSE WORLDWIDE
TAISEI ELECTRONICS
TAKATA PHILS CORP
TAMIYA PHILS.
TECHNOPROBE ASIA
TECHLOG
TEXAS INSTRUMENT
TIMEX

TOMS MANUFACTURING
TONGLUNG
TOYOFLEX CEBU
TSUKIDEN ELECTRONICS
TTI LAGUNA PHILIPPINES INC.
VEGA INDUSTRIAL SALES & SERVICES
YAMASHIN CEBU FILTER
YUENTHAI PHILIPPINES
YUTAKA
OUR LADY OF LOURDES PARISH
CHURCH – CEBU



FOR INQUIRIES:

MAIN OFFICE

Filsyn CMPD., Brgy. Don Jose
Santa Rosa City Laguna, Philippines
Tel. No: (049) 572-2289 / (049) 530-2329
Fax: (049) 541-0214
Email: ntpc@nuponcorp.net
URL: www.nutecled.com

CAVITE BRANCH

Unit 9 & 10 The Arcade Bldg. Holiday Homes
Biclatan, Gen. Trias, Cavite, Philippines
CP: +63-917-5746-137
Landline: (046) 412-4640
Email: ntpc_sales07@nuponcorp.net
Contact Person: Marisa Gutierrez

CLARK BRANCH

Apartment 5, Jasmin St., Pineda Subd. Dau,
Mabalacat Pampanga, Philippines
CP: +63-933-8246-690
Tel. No: (045) 625-0162
Email: ntpc_sales22@nuponcorp.net
Contact Person: Joan Castro

SUBIC BRANCH

83-A Kessing St., 14th St. Corner New Kalalake,
Olongapo City Zambales, Philippines
CP: +63-931-2038-060
Landline number: (047) 223-8894
Email: ntpc_sales21@nuponcorp.net
Contact Person: Cesiah Leonzon

BAGUIO BRANCH

71 Sarol Road Camp 7 Baguio City, Philippines
CP: +63-923-741-4128
+63-917-832-5206
Tel. No: (074) 661-6374
Email: ntpc_sales06@nuponcorp.net
Contact Person: Roldan Dilan

CEBU BRANCH

158 Sangi Road Pajo, Lapu-Lapu City Cebu, 6015,
Philippines
CP: +63-917-861-4426
Tel. No: (32) 520-3285
Fax: (32) 238-6085
Email: ntpc_sales03@nuponcorp.net
Contact Person: Noel Jumawan