

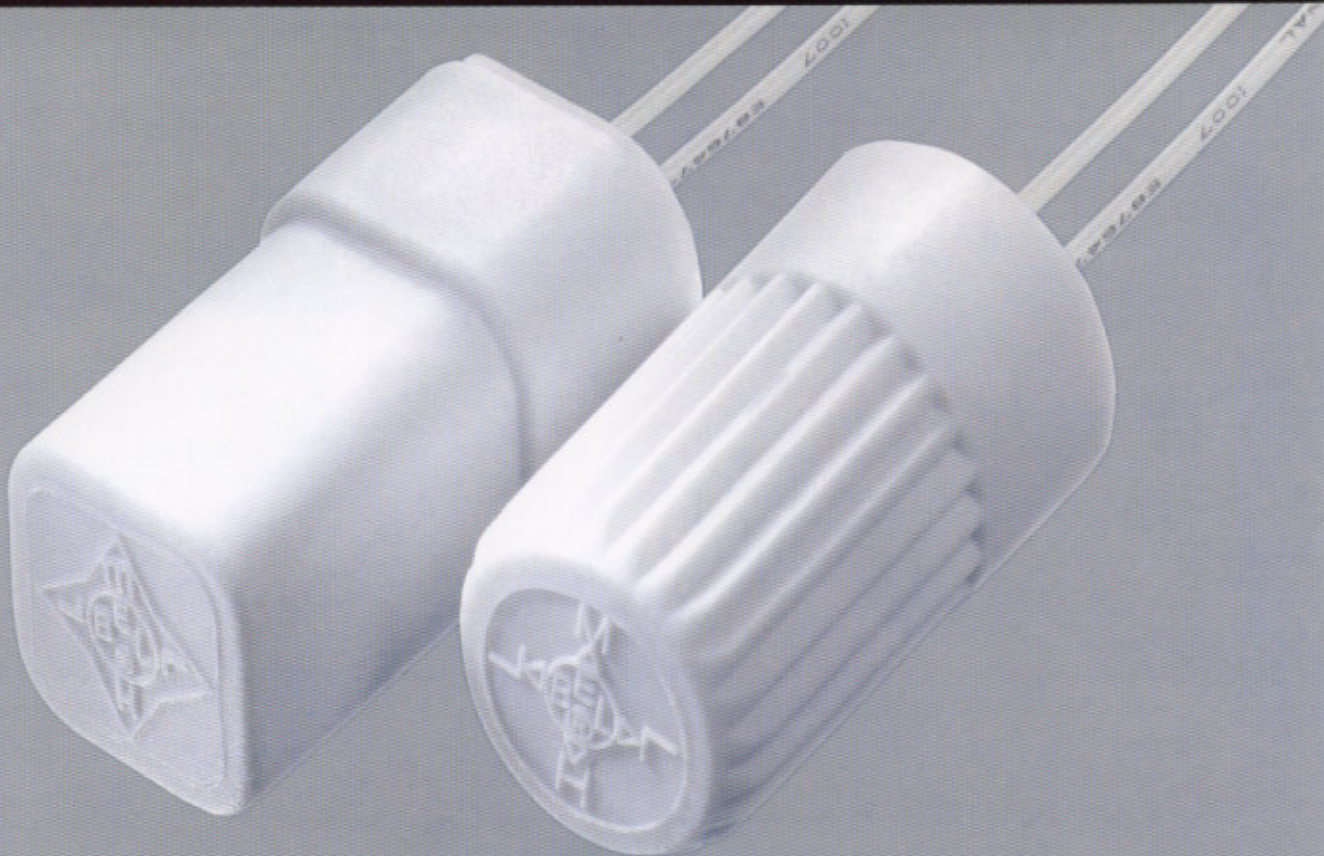
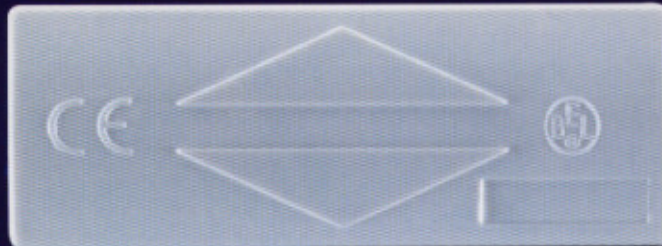
# BEL™

• Quality • Security • Reliability

## Inertia Sensor

### OUTSTANDING FEATURES :

- Quick installation
- Adjustable sensitivity
- Compact miniature size
- Highest degree of weather resistance
- Compatible with most security systems
- Suitable for all types of building structure
  - Powerful sensitivity in detecting forces of attempted entry
- Internal pulse plated in 24 CT gold with ISO 9002 certification



CE

## INTRODUCTION

**BEL** - sensor is an advanced, high frequency vibration sensor which can detect a burglar making a forced entry. It is an invaluable mechanism for incorporation into burglar alarm system.

**BEL** - sensor is capable of distinguishing vibrations caused by cutting, prying, drilling and hammering and the innocuous low frequency vibrations of wind or rocking motions.

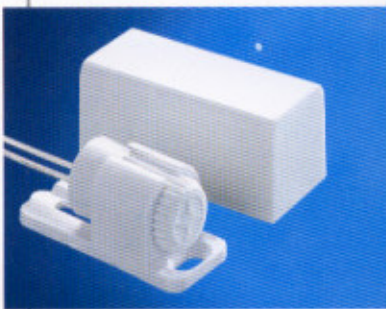
The sensor can be installed at glass, fences, walls, windows, doors, air conditioning ducts, manholes, etc.

It is plated in 24ct cobalt gold and is designed for the highest degree of resistance and corrosion in widely differing climactic conditions. In addition, it is humidity free and water resistance. The sensor is today's solution to any outside threat.

## INERTIA SENSOR

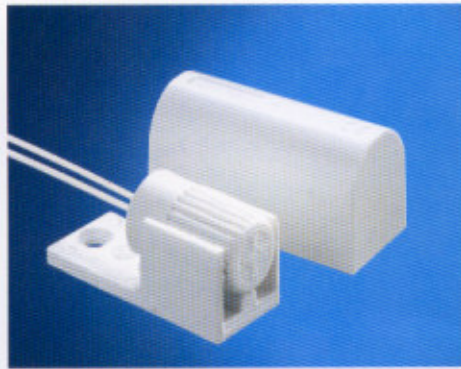
### BEL-M1

Dimension : 50 x 23 x 23 mm



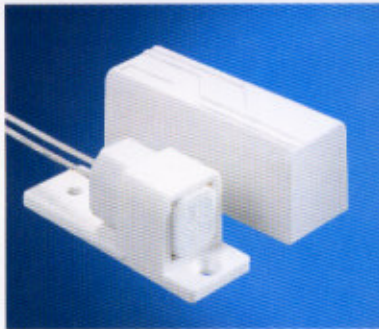
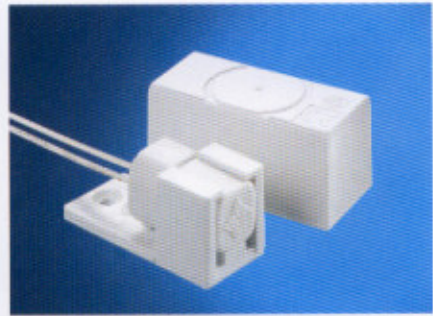
### BEL-M2

Dimension : 50 x 22 x 24 mm



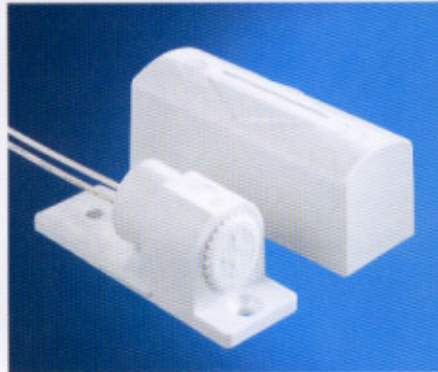
### BEL-M3

Dimension : 50 x 23 x 23 mm



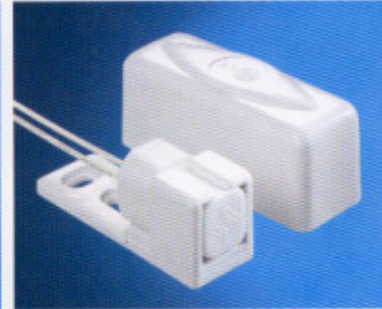
### BEL-M4

Dimension : 60 x 22 x 22 mm



### BEL-M5

Dimension : 60 x 22 x 22 mm



### BEL-M6

Dimension : 60 x 22 x 24 mm

## TECHNICAL DATA

Construction	- Beige ABS - 24ct Cobalt Gold Plated - 7/0.2mm Cables.
Sensitivity Range	- Δ L = Low Vibrations. - Δ M = Medium Vibrations. - Δ H = High Vibrations.
Operating Temperature	= of -10°C to +60°C

# BEL™

• Quality • Security • Reliability

## DESCRIPTION

**BEL** - sensor is a compact vibration sensor fully enclosed within a junction box with a clip-on cover. It is highly reliable and will respond to shock waves generated by attempted intrusion. Its sensitivity is fully adjustable between high, medium and low-level vibrations of disturbance. The sensor has been designed for internal and external (outdoor, in suitable housings) perimeter defence systems. Normally, it is electrically closed - circuit, but under shock conditions, go open circuit momentarily. As such, any forcible attack upon the surface to which it is attached, is instantly detected. A number of sensors can be series - connected to form a sensor loop which is connected to an analyser/ loop monitor circuit located at or within the alarm control panel.