

# MT914 / MT918 / MT9116

## 1080P AHD Hybrid DVR

**MAGTEC**

Date: 20 February 2018

### MT91XX Series

MT91XX series are standard 4/8/16 ch real time 1080P high resolution hybrid's DVRs with ability to connect analog and IP cameras simultaneously which adopt the standard H.264 high profile compression format and the most advanced SOC technique to ensure real time recording in each channel and realize outstanding robustness of the system.

MT91XX series DVR most unique feature is the smart phone video playback- True mobility surveillance at a very affordable price. Now not only you could stream up to 4/8/16 ch live view to your smart phone (both IOS and Android), you could also **playback previously recorded videos**. Video clips can be search by date or time and playback 1 ch at a time.

The series of product can meet different security requirement of home, financial, commerce, enterprise, transportation and government, etc.

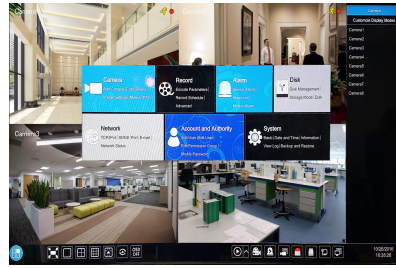
### Standard Features :

- 4 / 8 / 16 CH AHD video input 1080P/ 960P/ 720P/ 960H recording
- Support 1CH IPC1080P / 720P / 960H / D1 recording.
- Multi-mode recording : manual / timer / motion
- Playback : 4/8/16 CH simultaneously playback.
- Search: time/calendar, events (motion)
- Express and flexible backup via USB, network.
- Pentaplex : preview, record, playback, backup, and remote access
- Multi user online simultaneous.
- Authorization management, log review and device status review.
- HDMI 1080P output, thru high resolution display.
- Support PTZ present and auto cruise up to 128 presets and 8 cruises.
- Powerful smart phone surveillance supporting Iphone and Android.
- Support NAT function, support QR code scanning by mobile phone.
- Complete SDK software available, easy to integrate with other application.
- Adopt standard H.264 high profile compression format to get high-quality video at much lower bit rate.
- Intuitive an user-friendly Graphics User Interface (GUI), window style operation by mouse.
- Dual stream technology to encode recording system stream respectively. User can adjust network stream to fit bandwidth changing recording quality.
- Remote control via IE or CMS: preview, playback, backup, PTZ, and configuration.
- DHCP, DDNS, PPPoE network protocol, IE browser and CMS supported.

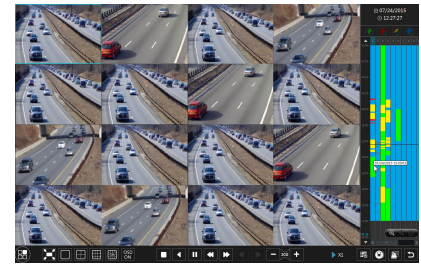




Multi tab live view



User friendly graphic user interface



16 channel simultaneous playback

## Specification:

Model	MT914 - 4 channel	MT918 - 8 channel	MT9116 - 16 channel
Camera Input	<b>4CH</b>	<b>8CH</b>	<b>16CH</b>
Operating System	Embedded Linux		
Mode	Pentaplexer (Live / Recording / Playback / Network / Backup)		
Video Compression	H.264 (Internet transmission : H.264)		
Video System	NTSC / PAL		
Video Input	BNC x 4 (Composite / 75Ω Balanced)	BNC x 8 (Composite / 75Ω Balanced)	BNC x 16 (Composite / 75Ω Balanced)
IP Input / access bandwidth	IPC X 1 / 6Mbps	IPC X 1 / 6Mbps	IPC X 8 / 24Mbps
Video Output	VGA(1920 x 1080) x 1, HDMI x 1 (1920 x 1080), Main: BNC X 1		VGA(1920 x 1080) x 1, HDMI x 1 (1920 x 1080), Main: BNC X 1
Audio Input	RCA x 4		RCA x 4
Audio Output	RCA x 1		
Audio Backup	YES		
Network Audio	Live and Playback		
Audio Compression	G.711		
Alarm Input	4	4	4
Alarm Output	1	1	1
Display Resolution	N: 1080P (1920X1080) / PAL: 1080P (1920X1080)		
Display Frame Rate	N: 120fps / P: 100fps	N: 240fps / P: 200fps	N: 480fps / P: 400fps
Display Mode	Digital zoom / Auto SEQ / Motion Pop-up		
Recording Compression	H.264		
Recording / Playback Resolution	N:1080P (1920X1080) / 720P (1280X720) / WD1 (960 x 480) / D1 (720 x 480) P:1080P (1920X1080) / 720P (1280X720) / WD1 (960 x 576) / D1 (704 x 576)		
Recording / Playback Frame Rate	N: 60fps @1080P / P:50fps @1080P N: 120fps @720P / P:100fps @720P N: 120fps @WD1 / P:100fps @WD1	N: 120fps @1080P / P:100fps @1080P N: 240fps @720P / P:200fps @7200P N: 240fps @WD1 / P:200fps @WD1	N: 240fps @1080P / P:200fps @1080P N: 480fps @720P / P:400fps @720P N: 480fps @WD1 / P:400fps @WD1
IP input Frame rate	N: 15fps @1080P / P:12fps @1080P N: 30fps @960P or 720P / P:25fps @960P or 720P	N: 60fps @3MP / P:48fps @3MP N: 120fps @1080P / P:100fps @1080P N: 120fps @960P or 720P / P:100fps @960P or 720P	3MP/ 1080P/ 960P/ 720P/ WD1/ D1
Recording Quality	6 Levels (Highest / Higher / Medium / Low / Lower / Lowest)		
Recording Mode	Auto / Manual / Motion / Schedule / Alarm		
Recording Setup	Adjustable Resolution and FPS by Each Channel		
Playback Mode	1 / 4 Channels	1 / 4 / 9 Channels	1 / 4 / 8 / 16 Channels
Playback Speed	Normal / REW (1/4 ~ 16X) / FF (1/4 ~ 16X) / Pause / SF		

Search Mode	Date / Time / Motion / Camera		Date / Time / Motion / Camera / Alarm
Watermark	Support Watermark		
Internal HDD	SATA / SATAII HDD x 1 (4TB max.)		SATA / SATAII HDD x 2 (4TB max.)
Backup Mode	USB / Network / External USB DVD-RW Burner		
GUI	32bit True Color GUI		
Multi-Language	11 Languages		
IR Remote Control	YES		
USB Mouse Control	YES		
PTZ	PELCO-P / PELCO-D / Lilin / SAMSUNG		
Ethernet	RJ45, 10/100/1000 Base-T		
Network Service	TCP/IP, DHCP, PPPOE (ADSL), LAN, DDNS		
Mobile Surveillance	YES (3G/GPRS) – iPhone, Android		YES (3G/GPRS) – iPhone, Android
Network Access Mode	IE / CMS (free software)		
Motion Detection	YES (22 x 15 Grids per channel)		
Pre-alarm	5 sec		
Post-alarm	10 ~ 60 sec		
Power Input	DC 12V / 5A		
Working Temperature	5°C ~ 40°C (41°F ~ 104°F)		
Working Humidity	Less than 90%		
Dimension	300 x 247 x 43 (mm)	300 x 247 x 43 (mm)	380 x 267 x 43 (mm)
Weight	0.8 Kg (N.W)	1.4 Kg (N.W)	2.7 Kg (N.W)
Certificates	CE / FCC / RoHs / WEEE		

### 720P Recording hours based on 1TB HDD

Resolution	MT914 - 4 channel	MT918 - 8 channel	MT9116 - 16 channel
Higher	120 hours ( 5 days )	48 hours ( 2 days )	24 hours ( 1 days )
Medium	264 hours ( 11 days )	120 hours ( 5 days )	48 hours ( 2 days )
Lower	552 hours ( 23 days )	264 hours ( 11 days )	120 hours ( 5 days )