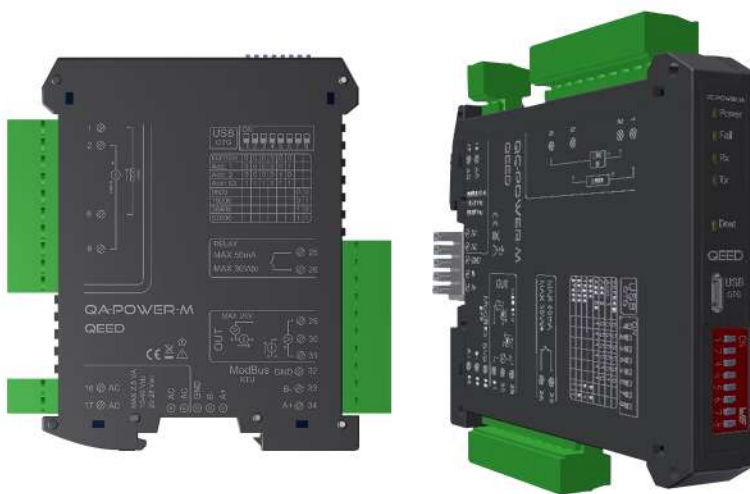


QA-POWER-M

SINGLE PHASE POWER METER

ISOLATED V/I CONVERTER -RS485 MODBUS - DATALOGGER

Single-phase power meter TRMS, and Voltage/Current Isolated. Signal Converter 1000VDC/600VAC, 10 A AC/DC, Irms, Vrms, Watt, Var, Va, Vpk, Ipk, Frequency, Cosφ, Energy bidirectional, THD. Configurable via USB, DIN rail mounting, 4kV galvanic isolation, universal supply AC/DC. Configurable alarm contact, RS485 Modbus and Analog output. DATALOGGING via USB with pen drive stick memory and download storage data on excel importable files. RTC Real Time Clock



POWER SUPPLY	10...40 Vdc, 19-28 Vac, 50-60 Hz
ABSORPTION	Maximum 2,5 VA
PROTECTION INDEX	IP20
ACCURACY	0,5% F.S.
MEASURE	Irms, Vrms, Watt, Var, Va, Vpk, Ipk, Frequency, Cosφ, Energy bidirectional, THD
REJECTION	50- 60 Hz
TEMPERATURE COEFFICIENT	< 200 ppm/°C
WORKING TEMPERATURE	-15...+65°C
STORAGE TEMPERATURE	-40°C... +85°C
ISOLATION	4kV input, 1.5kV between output, RS485 and power supply.
HUMIDITY	10...90% not condensing
ALTITUDE	Up to 2000 m s.l.m.
MOUNTING	DIN rail mounting with removable terminals, RS485 bus and Supply connection ready on the base of module (connector not included, on request).
CONNECTIONS	Removable terminals 5,08mm
CE STANDARDS	EN61000-6-4/2006 + A1 2011; EN64000-6-2/2005; EN61010-1/2010
DIMENSIONS	17,5x 100x 112 mm (terminals excluded)
DATA LOGGER	Non-volatile memory. Log on USB OnTheGo port by Pen Drive stick memory. RTC Real Time Clock integrated allows you to manage the log with date and time.
CONFIGURATION	By free software FACILE QA-OMNI to configure all of the conversion parameters like span, zero, alarm contact and log via USB port or via RS485. Dip-switch for setting modbus address and baudrate.

INPUT

Voltage :

VOLTAGE : Up to 1000 V DC / 600 V AC fully configurable via USB;
CURRENT: Up to 10 A AC/DC (more by using external CT).

OUTPUT

Frequency :

CURRENT:
0...20mA programmable, max load 600 ohm;
VOLTAGE:
0...10V programmable, min load resistance 2kohm.
RS485 MODBUS:
dip-switch for setting address and baudrate.
CONTACT OUTPUT: Optomos contact, programmable N.O, alarm contact by free interface software FACILE QA-POWER, retransmission or storage pulse (not volatile memory).

APPLICATIONS

Photovoltaic: Parallel String Voltage monitoring; Energy Management: direct communication via RS485 Modbus to all Master Modbus devices; High Voltage AC/DC converter; High Current AC/DC converter using external CT; Local and Remote monitoring at the same time; Datalogger on pen drive stick memory with .csv file (direct import to Excel).

3-WAY GALVANIC ISOLATION

INPUT CURRENT VOLTAGE AC/DC	POWER SUPPLY	ANALOG & DIGITAL OUTPUT RS485 USB
--	-------------------------	--