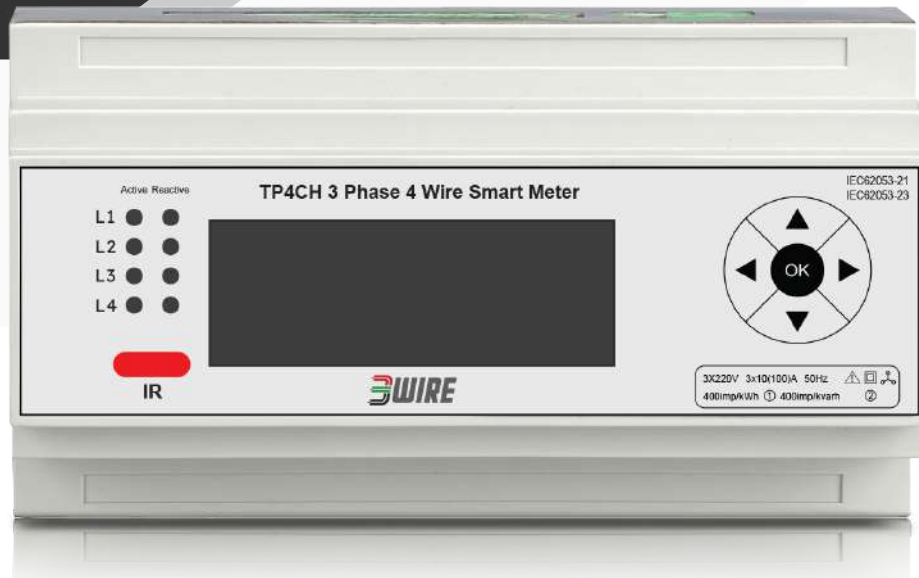


# TP4CH

3 Phase 4 Wire Smart Meter

www.3wire.my



## HIGHLIGHTS

TP4CH 3 PHASE 4 WIRE SMART METER is a 3Phase Energy Meter that measures 4 different loads (4 in 1 energy meter) with Modbus RTU enabled.

Supplied with 100A or 400A Split-Core Clip On CTs ( 3nos x 4 channel).

It is compliant to IEC 62053-21 "Static meters for active energy (Class 1 & 2)" and IEC 62053-23 "Static meters for reactive energy (Class 2 & 3)".

## FEATURES

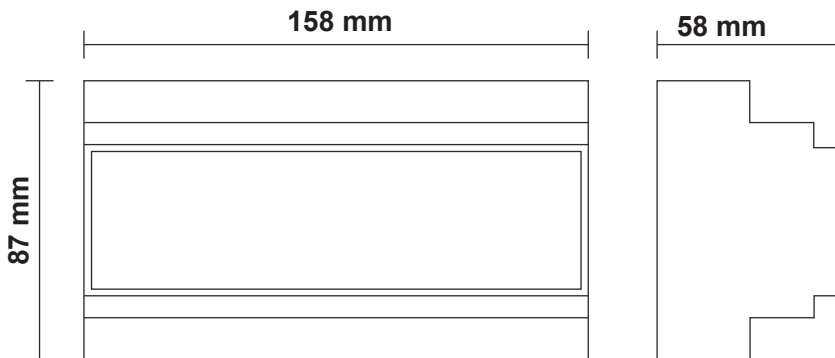
- Each of the 4 channel has an independent high-precision energy metering chip, to ensure metering accuracy and reliability.
- 4 quadrant energy measurement; each channel can measure both import energy and export energy with nett energy calculations.
- Electrical parameters measured by each channel includes V, I, F, PF, kW, kVAr, kVA.
- Able to record and alarm events like undervoltage, overvoltage, voltage spike, phase loss, etc.
- Reading closing date can be set to enable automatic bill settlement for each month.
- Timed data freeze, hourly data freeze and daily data freeze. Meter can freeze data of energy, etc. There are 30 timed freeze, 254 hourly freeze, 62 daily freeze.
- LCD digital display, loop display of various parameter (of each channel).
- Data from meter can be read by handheld unit (IR port) and thru RS485 interface.
- Compliant to standard 35mm din rail installation.
- Accuracy Class: Active: 0.5S, 1, Reactive: 1, 2
- Clock Accuracy:  $\leq 0.5s/day$  (23°C), variation with temperature change  $< 0.1s/day$
- Connection Type: by CT
- Working Voltage: DC 40V~273V, AC 40V~288V
- Voltage Range (no phase loss)

Specified Operation Voltage	0.3Un~1.1Un
Extended Operation Voltage	0.15Un~1.15Un
Working Voltage Limit	0.0Un~1.15Un

- Frequency: 50Hz
- Power Consumption (nominal condition)

Basic Current	<10A	≥10A
Voltage Circuit of Each Phase	≤1.5W, 6VA	≤1.5W, 6VA
Current Circuit of Each Phase	≤0.2VA	≤0.4VA

- Temperature & Humidity: 23°C±2°C & RH 40% ~ 60%
- Weight: 350g
- Dimension:



## TP4CH

