

# PA310 Clip-on CT Smart Power Meter

Low cost, easily installation, large recording capacity smart transducer

PA310 is designed for electric power monitoring and load recording for single or three phase systems. It can be directly used in low voltage systems due to its wide range measurement (up to 200A). PA310 can also maintain better than 1% (IEC62053-21) accuracy even under low current condition (< 5A), thus it still can be used in middle to high voltage system. The unique features of PA310 including : Clip-on CT, bi-directional measurement, long time load recording, and standard communication. Its compact size, easy installation, and low cost make PA310 suitable for modern electricity monitoring and load investigation.

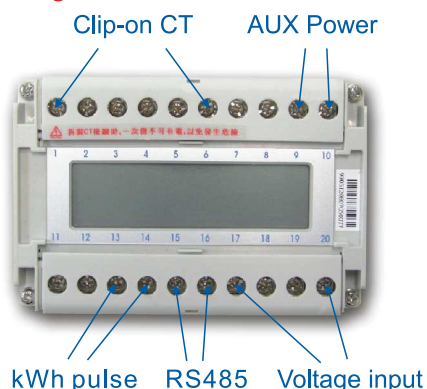


## Features

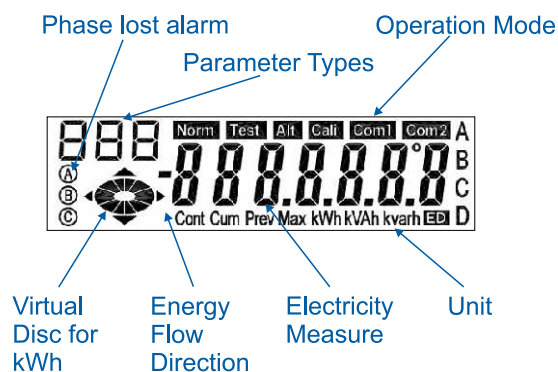
- Clip-on CT, easily wiring especially for on-line installation
- Wide measurement range 10(60)A, max to 200A(24Ø) suitable for low voltage system
- Wh accuracy better than 0.5%(pf=1)
- Up to 10000 load profile records with configurable recording period
- RS485 communication support Modbus protocol

## Wiring & Display

### ❖ Wiring



### ❖ LCD Display



Arch Meter Corporation  
www.archmeter.com

## Specification

<b>Type</b>	3 phase 3(4) W, 110/220V, 50/60Hz
<b>Rating</b>	Base current(Ib)10A, I <sub>max</sub> 60A, option in CT Ø 16mm(100A), CT Ø 24mm(200A). Max. to 400A and 1000A
<b>kWh Accuracy</b>	pf=1, <0.5%, pf=0.5 <1%, better than IEC62053-21
<b>Starting Current</b>	<0.001I <sub>b</sub>
<b>Display</b>	Mono LCD
<b>Wiring</b>	Auto detection · 1P2W · 1P3W · 3P3W-2CT · 3P3W-3CT · 3P4W
<b>Comm I/F</b>	RS485, with Modbus protocol Baud Rate : 9600 · 19200
<b>Load profile</b>	2 groups, group 1 max. 12 channels, group 2 max. 8 channels Programmable recording interval for each group Max store : 104 days (interval = 15 mins) / channel (in group1 12 channels or group2 8 channels)
<b>Battery</b>	LiSOCl <sub>2</sub> , 950 mAh for RTC
<b>Measures</b>	VA-N, VB-N, VC-N, VL-Nave VA-B, VB-C, VC-A, VL-Lave I A, I B, I C, I ave PFA, PFB, PFC kWA, kWb, kWc, kWtot kvarA, kvarB, kvarC, kvartot kVAA, kVAB, kVAC, kVAtot Wh+, Wh-, VARh+, VARh-, Vah Hz
<b>Bi-direction measures</b>	kW, kWh, kVAR, kvarh
<b>Surge Winstand</b>	EN61000-4-5
<b>LVD Test</b>	EN61010-1
<b>Size</b>	110(L) x 75(W) x120(H) mm
<b>Operation Temp</b>	0°C~50°C
<b>Installation</b>	Rail-mounted
<b>Terminals</b>	2 x 10 terminals, IP25

## Certificate

- LVD Test : EN61010-1
- CE Test :
 

EN61326 Conducted Emission EN61000-3-2 Harmonic Current Emission EN61000-4-2 Electrostatic Discharge EN61000-4-4 Electrical Fast Transient/Burst EN61000-4-6 Conducted Susceptibility EN61000-4-11 Voltage Dips and Interruption	EN61326 Radiated Emission EN61000-3-3 Voltage Fluctuation and Flicker EN61000-4-3 Radiated Susceptibility EN61000-4-5 Surge EN61000-4-8 Power Frequency magnetic Field
---	--
- FCC Test : Class A and CISPR 22

## Ordering code

PA310 - □

- 10 : CT Ø 10mm (standard)  
 16 : CT Ø 16mm (option)  
 24 : CT Ø 24mm (option)



**Arch Meter Corporation**

4F, No.3-2, Industry E. Rd., 9 Science-Park Hsinchu 300 Taiwan  
 TEL:+886-3-5631359 FAX:+886-3-5631663  
 Email:sales@archmeter.com