

PA330 Multi-Function Power Meter

PA330 is designed for single and three phase power monitoring and measurement. It provides wide range of measurements including current, voltage, energy, watt, power factor, watt-hour, frequency...etc. PA330 also build-in RS485 can easily integrate with most third SCADA system. DIN 96*96 standard compact size enable PA330 to be easily installed and its low cost and wide flexibility application also made PA330 a good choice for modern power monitoring.

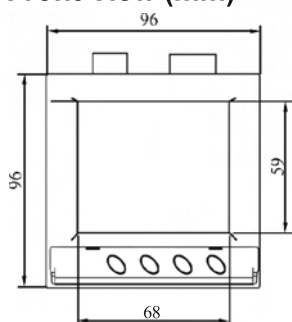


Features

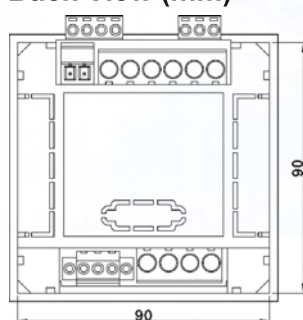
- Comply IEC62053-22 Class 0.5 standard
- V \ I accuracy <0.2%, Wh<0.5%, with bi-directional energy measurement
- More than 90 parameters measure
- Current direction setting to correct the display value
- Large size of LCD with backlight adjustment in 4-stage, easy to operate
- Power Quality measurement in V/I THD \ V/I unbalance \ V Eligibility \ Min.& Max. parameters
- Compact size, standard DIN 96*96, equipped with four clips to tight the meter on the sheet metal
- With RS485 communication protocol

Mounting

Front View (mm)



Back View (mm)



- After mounting the instrument, place all four support latch in position.
Panel cut-out area is 92x92mm

Certificate

1. LVD Test: EN61010-1
2. CE Test :
 - EN61326 Conducted Emission
 - EN61000-3-2 Harmonic Current Emission
 - EN61000-4-2 Electrostatic Discharge
 - EN61000-4-4 Electrical Fast Transient/Burst
 - EN61000-4-6 Conducted Susceptibility
 - EN61000-4-11 Voltage Dips and Interruption
 - EN61326 Radiated Emission
 - EN61000-3-3 Voltage Fluctuation and Flicker
 - EN61000-4-3 Radiated Susceptibility
 - EN61000-4-5 Surge
 - EN61000-4-8 Power Frequency magnetic Field
3. FCC Test : ClassA and CISPR 22



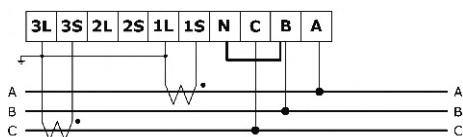
Arch Meter Corporation
www.archmeter.com

Specification

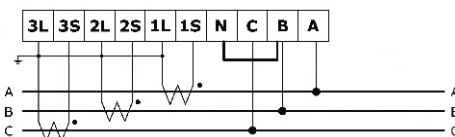
Aux Power	AC80-264V/DC100-300V
Input Voltage	10V-600V L-L
Input Current	2mA-5A
Accuracy	V、I 0.2%、W 0.5% (PF=1.0)
Frequency	45-65Hz
Measures	V, I, kW, kvar, kVA, kWh, kvarh, kVAh PF, Frequency, Demand, Running hour
Alarms	NONE、OVER V/I、OVER F；UNDER V/I、UNDER F；OVER Dmd；ANY
Power Quality	V/I THD、V/I unbalance、V Eligibility、Min.& Max parameters
Display	Mono 96*96 LCD
Communication	RS485*1, LonTalk(option)
Timer	RTC
Wiring Ports	Aux Power、Voltage、Current、DO、RS485、LON
I/O	DO OUTPUT*2；DO1 Alarm output、DO2 Pulse/ Alarm output
Operation Temperature	-20°C-70°C
Storage Temperature	-25°C-80°C
Humidity	20-90%RH
Dust/Water Proof Rating	Panel：IP52、Case：IP20
Size	96(W) x 96(H) x 97(L) mm
Power consumption	0.45~0.7W(Backlight off) 1.3~1.7W(Max., Backlight) 2.3W(Max. Backlight & Lon module)

Wiring Diagram

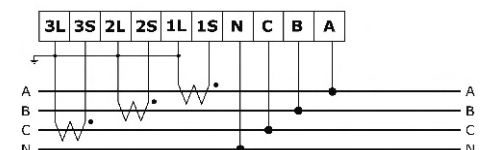
■ 3P3W-2CT



■ 3P3W-3CT



■ 3P4W-3CT



Ordering Code

PA330 ---- x

Communication

0 : RS485

1 : Lontalk



archmeter

Arch Meter Corporation

4F, No.3-2, Industry E. Rd., 9 Science-Park Hsinchu 300 Taiwan

TEL:+886-3-5631359 FAX:+886-3-5631663

Email:sales@archmeter.com