

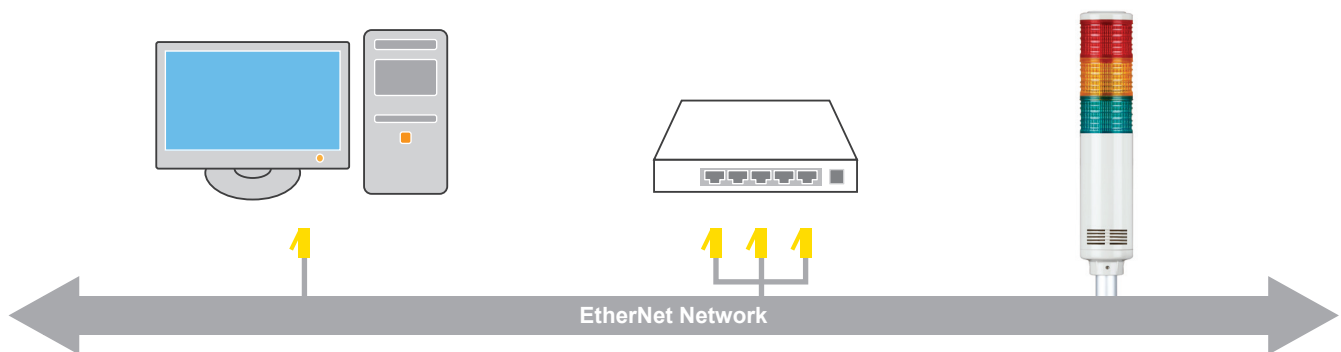
# Technical Data of Ethernet LED Tower Light

## Controllable LED tower light connected to the application program in the PC using a PC and ETN(Ethernet) interface



- ETN tower light is a controllable LED tower light connected to the application program in the PC using a PC and ETN(Ethernet) Interface.
- You can monitor or control the product from a remote location because it is controllable by using a web browser or application on a PC.
- Provides MS runtime libraries for developers(VC ++, VB, Delphi(32bit), c#(64bit)) to utilize on various applications of a PC, and a sample program (VC++) is available for testing purpose.
- Supported OS(32bit 64bit) : Windows XP, Windows 7, Windows 10
- Supported Program : VC++, VB, Delphi(32bit only), C#(64bit only)
- Communication speed : 10M/ half duplex method

※ The figure below shows the connection of the ETN tower light.



### 1. What is Ethernet?

Ethernet is the most popular physical layer LAN technology in use today. It defines the number of conductors that are required for a connection, the performance thresholds that can be expected, and provides the framework for data transmission. A standard Ethernet network can transmit data at a rate up to 10 Megabits per second (10 Mbps). The Institute for Electrical and Electronic Engineers developed an Ethernet standard known as IEEE Standard 802.3. This standard defines rules for configuring an Ethernet network and also specifies how the elements in an Ethernet network interact with one another. By adhering to the IEEE standard, network equipment and network protocols can communicate efficiently.

### 2. What is TCP/IP Protocol?

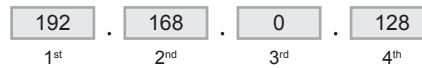
TCP/IP (Transmission Control Protocol/Internet Protocol) is the basic communication language or protocol of the Internet. It can also be used as a communications protocol in a private network (either an intranet or an extranet) TCP/IP is a two-layer program. The higher layer, Transmission Control Protocol, manages the assembling of a message or file into smaller packets that are transmitted over the Internet and received by a TCP layer that reassembles the packets into the original message. The lower layer, Internet Protocol, handles the address part of each packet so that it gets to the right destination. Each gateway computer on the network checks this address to see where to forward the message. TCP/IP communication is primarily point-to-point, meaning each communication is from one point (or host computer) in the network to another point or host computer.

# Technical Data of Ethernet LED Tower Light

## 3. IP Address format

The format of an IP address is a 32-bit numeric address written as four numbers separated by periods. Each number can be zero to 255. For example, 203.172.12.7 could be an IP address. An IP address is divided into network address and computer address, and classified as Class A, B, C, D, and E depending on the size of the network or the number of host. Of these, only Class A, B, C are given to a general user.

The IP address what we are about to test is classified as C Class.



No.	Description	Command
1 <sup>st</sup>	1 <sup>st</sup> address, Classes are A,B,C,D,E.	
	A CLASS : Large network	A CLASS address : 1-127
	B CLASS : Large network	B CLASS address : 128-191
	C CLASS : Small network(private IP)	C CLASS address : 192-223
	D CLASS : Multi cast(use in designated group)	D CLASS address : 224-239
	E CLASS : Stand by	E CLASS address : 240-255
2 <sup>nd</sup>	2 <sup>nd</sup> address, Being Network ID or Host ID depending on 1 <sup>st</sup> Address	
3 <sup>rd</sup>	3 <sup>rd</sup> address, Being Network ID or Host ID depending on 1 <sup>st</sup> Address	
4 <sup>th</sup>	4 <sup>th</sup> address, Being Network ID or Host ID depending on 1 <sup>st</sup> Address	



### IP address assignment by class

GROUP	1 <sup>st</sup> address	2 <sup>nd</sup> address	3 <sup>rd</sup> address	4 <sup>th</sup> address
A CLASS	1-127	0.0.0-255.255.255		
B CLASS	128.0-191.255		0.0-255.255	
C CLASS	192.0.0-223.255.255			0-255

## 4. What is MAC Address?

MAC address (Media Access Control) is a global unique identifier assigned to network devices. In other words, you can use the Mac Address IP address to find a separate devices. It delivers Data Packet just like a postman delivers a letter.

So what would be the difference between IP address and Mac address? Both IP address and MAC address are the address of its destination. IP address is simply the address while Mac address is a social security number of people living in the house IP address can be changed dynamically, but Mac address only has one unique address per device.

- Mac Address : an address for computers to communicate with each other, and there is no other PC that has a same Mac Addr as yours.
- IP Address: needed routing when other computers are searching for your computer address, that is an address of your computer for others to search.

An IP address is assigned to every device on a network so that device can be located on the network. The internet is a network, and Every device on an TCP/IP network must have a unique IP address. IP addresses are assigned, either automatically by DHCP, or by manual configuration. That number is used by the network routing equipment so that when you ask for a page from the site, that request is routed to the right server. MAC addresses are typically used only to direct packets in the device-to-device portion of a network transaction. That means that your computer's MAC address will be in network packets only until the next device in the chain. If you have a router, then your machine's MAC address will go no further than that. Your router's MAC address will show up in packets sent further upstream, until that too is replaced by the MAC address of the next device.

## 5. What is PORT?

A port (noun) is a "logical connection place" and specifically, using the Internet's protocol and TCP/IP, the way a client's program specifies a particular server program on a computer in a network. Higher-level applications that use TCP/IP such as the Web protocol, Hypertext Transfer Protocol, have ports with preassigned numbers. These are known as "well-known ports" that have been assigned by the Internet Assigned Numbers Authority (IANA). Other application processes are given port numbers dynamically for each connection. When a service (server program) initially starts, it is said to be bound to its designated port number. As any client's program wants to use that server, it also must request to bind to the designated port number.

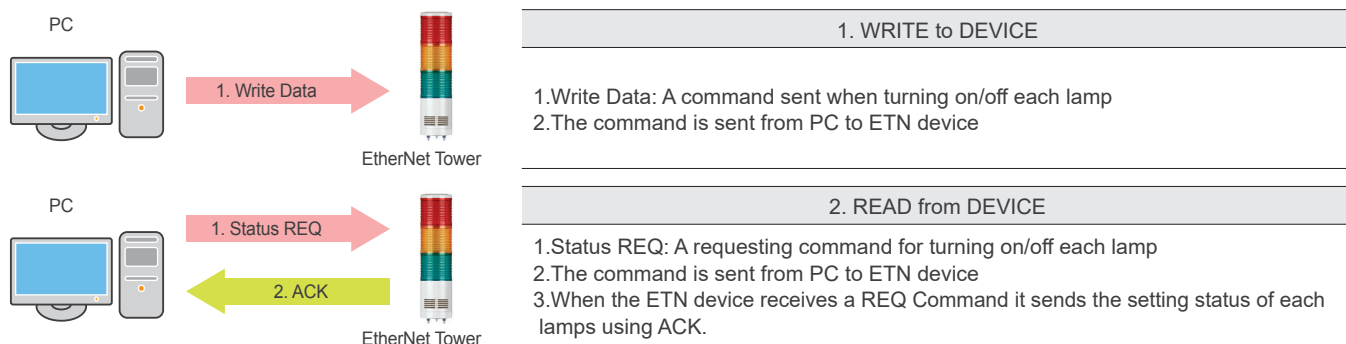
Port numbers are from 0 to 65535. Ports 0 to 1024 are reserved for use by certain privileged services. For the HTTP service, port 80 is defined as a default and it does not have to be specified in the Uniform Resource Locator.

# Technical Data of Ethernet LED Tower Light

## 6. What is Socket Program?

It is to implement a program to send and receive data between host PCs that are apart from each other in network programming. However, the connection between host PCs are far away so a device is that has a feature of connecting the two at a software level is required, and that device is the socket. Generally, the terms “socket programming” and “network programming” have the same meaning. We have provided a library file for users so that they can easily use the socket program.

※ The figure below show the sequence of our ETN Tower Lamp.



## 7. Applying the Ethernet Device

1. Proceed to check the current network and the assigned IP address of your PC.  
Start(run) -> CMD – ipconfig/all

```

Ethernet adapter Local Area Connection:

    Connection-specific DNS Suffix  . :
    IP Address . . . . . : 192.168.10.101
    Subnet Mask . . . . . : 255.255.255.0
    Default Gateway . . . . . : 192.168.10.1
    
```

2. Because the ETN tower light is connected to a hub with the PC that is same as the picture on the front page, ETN tower light and the PC are now connected with the same network.
3. Download the library file, test programs and manuals from the CD provided or from our website.
4. When you unzip the file, there will be a file with the same name below. The instructions are listed inside the file.

## Download

PDF Catalogue    Operating Manual

**Test Program    Manual & Library**



- 1.Dev. ETN Program Sample  
Program Sample needed when developing (x32bit/x64bit compatibility)
- 2.How to use  
Instructions of how to use the product and library file

# Technical Data of Ethernet LED Tower Lamp

5. When you unzip “ETN TEST PROGRAM.zip” file, following folders are created.

## 1. ETN Test Program

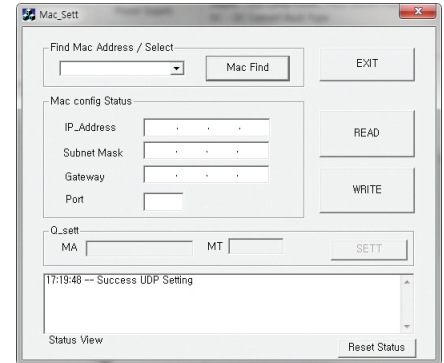
A program for setting IP before testing the ETN device

## 2. IP Set Program

A program for setting testing the ETN device

6. Run the “Mac\_Setting.exe” program that is inside the IP Set Program Folder .

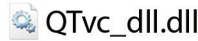
- When the program is running such as the right figure, click the “Mac Find” button in the “Find Mac Address / Select” section
- MAC Address of the connected device appears when you click the Device List combo box . (If the Mac Addr does not appear, make sure that the connection status or the power supply is functional and then retry.)
- Select the MAC Addr of the device you want to change, and then click on the “Read” button.
- Check the information and settings from the “Mac config status”
- Set the value of users network information identified in the previous chapter (subnet mask, gateway) in each text box, and set a different IP\_Addr than your PC Apply the settings by pressing the Write button
- The port is set to “20000” by default and the port number can be changed if necessary
- Reconnect After Disconnecting the power from the tower light.



7. ETN Test Program Files folder includes the followings.



Test Program

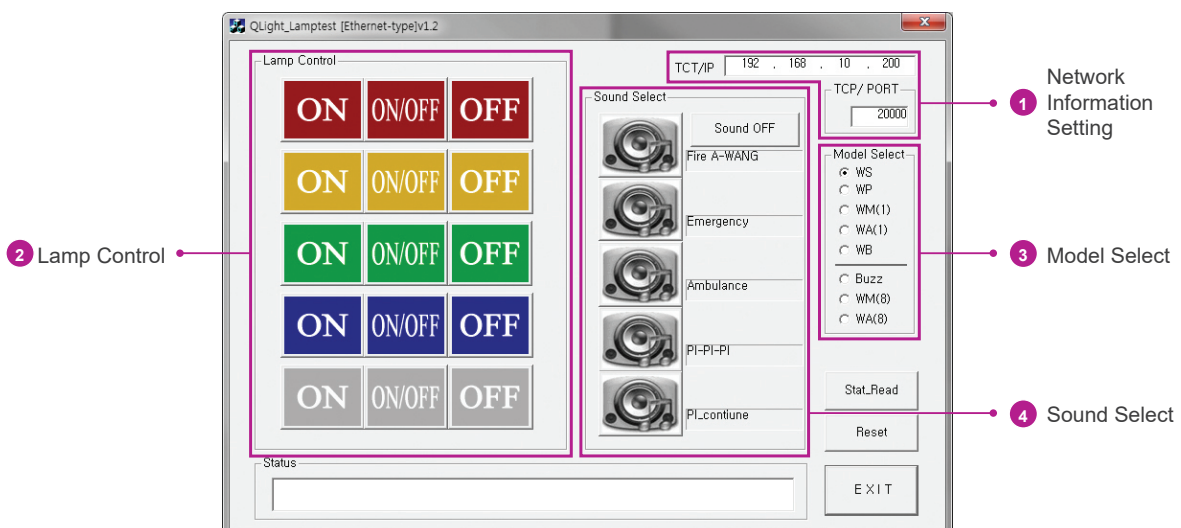


Library required for the test program

8. Run the “QLight\_Lamptest\_TCP” program.

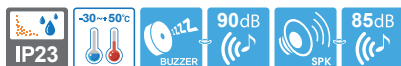
Article	Detailed specification
1 Network Information Setting	- Input port on TCP/PORT and IP address on TCP/IP that set on Ethernet tower lights
2 Lamp Control	- ON : Click the button Lamp ON - ON/OFF : Click the button Lamp Flash - OFF : Click the button Lamp OFF
3 Model Select	- WS : 5 warning sounds(mono) - WP : 5 special warning sounds(mono) - WM(1) : 5 Melodies(mono) - WA(1) : 5 alarms(mono) - WB : Software Buzzer 5 sounds(speaker type) - Buzzer : 5 Buzzer sounds
4 Sound Select	- Select 5 sounds based on model which is fixed on “Model select”

- User can select appropriate sound pattern by using ‘Model select’ menu. There’re WS, WP, WM, WA and WB sound patterns and user can choose the option when placing order.

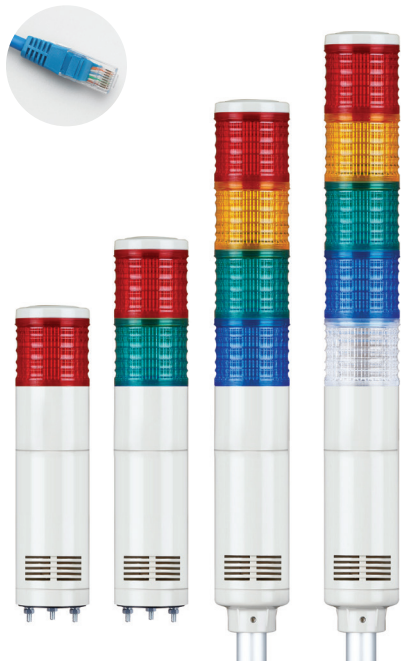


# ST45(M)L-ETN

Ø45mm Ethernet LED Tower Lights



**Can Control Remotely Through Internet or Local Area Network**



**ST45(M)L-ETN series**

## Mounting Bracket

Standard	LB18	LW18
Steel	Steel	PC
QZ18	SZ18	QLA18
PC	AI	PC

※ Please refer to page 190-195 for detailed dimensions.

## Customization

- Customized color arrangement available
- Customized pole length available
- Wall mount bracket available



Wall Mount Bracket  
TWS45

Wall Mount Bracket  
TWA45

## Common Specifications(ST45L-ETN/ ST56EL-ETN/ ST80EL-ETN/ QT50L-ETN/ QT70L-ETN)

- Software controls the steady/flashing function
- Please refer to page 160 for detailed information about selectable sound patterns.
- Ethernet port and power cable are provided with product
- Volume : Buzzer – Max 90dB at 1m/ Signal Sound – Max 85dB at 1m

## ST45(M)L-ETN Ø45mm Ethernet Tower Light

Model number	Layer	Voltage	Current	Certificate	Color
ST45L-ETN ST45ML-ETN	1	DC12V DC24V AC110V-220V	0.200A 0.135A Max. 0.053A	-	• R-Red
	2	DC12V DC24V AC110V-220V	0.210A 0.145A Max. 0.056A		• R-Red • G-Green
	3	DC12V DC24V AC110V-220V	0.220A 0.155A Max. 0.058A		• R-Red • A-Amber • G-Green
	4	DC12V DC24V AC110V-220V	0.230A 0.165A Max. 0.061A		• R-Red • A-Amber • G-Green • B-Blue
	5	DC12V DC24V AC110V-220V	0.240A 0.175A Max. 0.055A		• R-Red • A-Amber • G-Green • B-Blue • W-White

## Signal Sound Current (Per Layer)

Voltage	DC12V	DC24V	AC110V-220V
Current	0.200A	0.135A	Max. 0.053A

## Wiring Instructions

- Apply properly rated voltage through the POWER CABLE
- Connect the RJ45 connector of the UTP cable into the PC's Ethernet port or router
- External power line : UL1015 AWG18(0.75sq)×2C 400mm
- Power plug will be provided in case of AC type
- UTP cable : Category 5 cable

## Ordering Specification

<b>ST45L-ETN-WS</b>	-	<b>3</b>	-	<b>24</b>	-	<b>RAG</b>	-	<b>LW18</b>
[Model number]		[Layer]		[Voltage]		[Color]		[Mount bracket]
• ST45L-ETN-BZ • ST45L-ETN-WS • ST45L-ETN-WM • ST45L-ETN-WA • ST45ML-ETN-BZ • ST45ML-ETN-WS • ST45ML-ETN-WM • ST45ML-ETN-WA		• 1-1 layer • 2-2 layers • 3-3 layers • 4-4 layers • 5-5 layers		• 12-DC12V • 24-DC24V • 110/220 -AC110V-220V		• R-Red • A-Amber • G-Green • B-Blue • W-White		• None -Standard • Bracket -LB18 -LW18 -QZ18 -SZ18 -QLA18

※ Mount brackets are available for the pole mount type(ST45L-ETN series) only.

# ST-ETN/ QT-ETN series



## Technical Diagram

(Units : mm)

