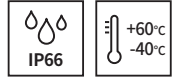


# QEAL1



## PRODUCT SPECIFICATION

QEAL1

**ICAO standard** Low intensity B type  
**Materials** Lens-Tempered glass, Housing-Al, Protection cage-STSS316L, Heat sink-Al  
**Ambient operating temperature**  $-40^{\circ}\text{C} \leq T_{\text{amb}} \leq +60^{\circ}\text{C}$   
**Protection rating** KCs - Ex db IIC T4 Gb IP66  
**Certificates** ICAO, KCs  
**Standard housing color** Red  
**Cable entry** 1/2" NPT  
**Light source** High intensity light emitting diodes(LED)  
**Light color** Red  
**Luminous intensity** 50cd±25%  
**Light function** Steady



QEAL1

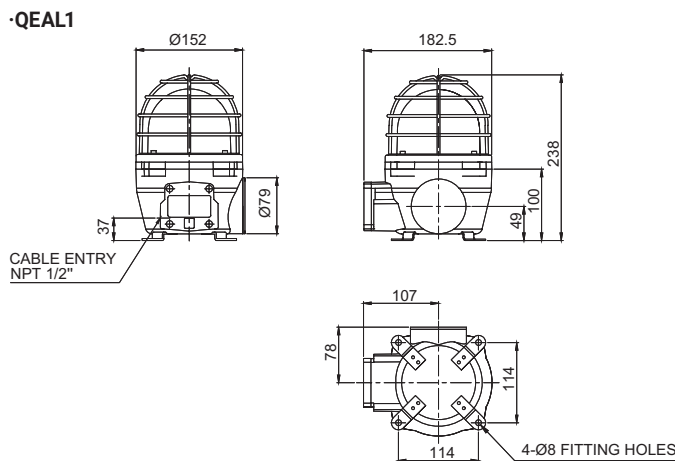
- Low Intensity B type explosion proof aviation obstruction light
- Features high visibility from a distance with the direct LED light distribution system
- Cost savings enabled by using a long lasting LED light source which eliminates the need for maintenance
- Aluminum housing provides excellent durability
- Terminals located inside the housing for wiring

### QEAL1 Explosion Proof Low Intensity LED Aviation Obstruction Light

Model number	Voltage	Power consumption	Certificate	Weight	Light color
QEAL1	DC12V	30W		3.90kg	● Red
	DC24V				
	AC110V-220V				

### Technical Diagram

Units: mm



### Customization

- Built-in explosion proof cable gland available(Standard type does not provide explosion proof cable gland)
- Customized 2 cable entries available
- Customized cable entry(M20×1.5) available
- Built-in darkness detecting sensor available
- Amber housing, mounting bracket is available upon request

### Ordering Specification

QEAL1	-	24	-	R
[Model number]		[Voltage]		[Color]
QEAL1		12-DC12V 24-DC24V 110/220-AC110V-220V		● R-Red