

QLEX-TRI-240(PL)



QLEX-TRI-240(PL)

PRODUCT SPECIFICATION

QLEX-TRI-240(PL)

Materials Side cover-Al, Lens-PC, Bracket-PC
Ambient operating temperature $-40^{\circ}\text{C} \leq T_{\text{amb}} \leq +60^{\circ}\text{C}$
Protection rating Ex d IIC T6
Certificates KCs, NEPSI

- Explosion proof LED work light designed for use in explosive gas environments with Ex d IIC rating
- Enhanced durability with aluminum housing and polycarbonate lens tube
- Slim and compact structure realize aesthetically pleasing design
- Semi-permanent service life with long-lasting LED light source

QLEX-TRI-240(PL) Explosion Proof LED Work Light

		Optics Specifications
Model		QLEX-TRI-240(PL)
Directions		Translucent
Light color		Cooldaylight
Color temperature		6,000-7,000K
Luminous flux	DC	650lm
Efficacy(lm/W)	DC	310Lux
		Specifications
Voltage		DC24V
Range for operation voltage		DC21.5V-26.5V
Power consumption		8.5W
Insulation resistance		Min. 100MΩ(500V DC mega ohm meter)
Withstanding voltage		DC: 500VAC, 60Hz, 1 minute
Protection rating		IP66/67
Materials		Side cover-Al, Lens-PC, Bracket-PC
Certifications		
Weight(Approx.)		0.62Kg

Ordering Specification

QLEX-TRI	-	240(PL)	-	24	-	KCs
[Model number]		[Product length]		[Voltage]		[Explosion-proof certification]
QLEX-TRI		240-240mm		24-DC24V		KCs NEPSI

Cautions in use

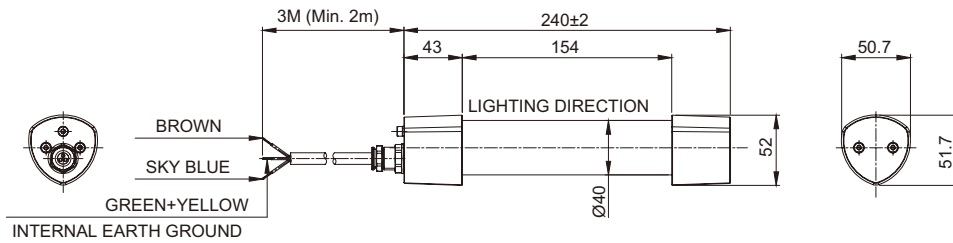
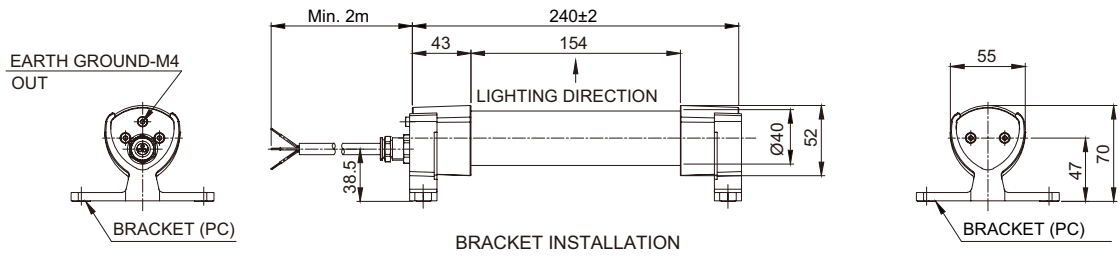
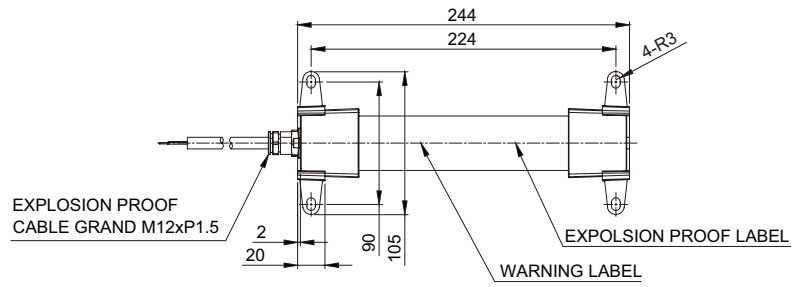
· Contact structure of an explosion proof product must be a qualified part we provide. Please do not disassemble, assemble, modify or repair arbitrarily.



Technical Diagram

Units: mm

·QLEX-TRI-240(PL)



QLEX-TRI-240(PL) PRODUCT LAY-OUT