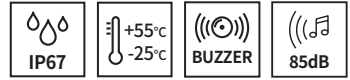


EMCL50U



PRODUCT SPECIFICATION

EMCL50U

Materials Housing-AL, Lens-PC
Ambient operating temperature -25°C to +55°C
Volume Max. 85dB at 1m
Protection rating IP67

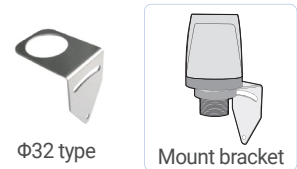
- Small indicator light capable of transmitting three signal colors with one indicator light
- By applying a milky translucent lens, the unique color of the LED is emitted subtly when turned on
- Buzzer specifications can be selected for signal wire withdrawal type or M12 connector mounting type



EMCL50U

Bracket

- It can be installed on the wall by adopting wall mounting type bracket.



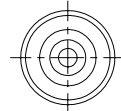
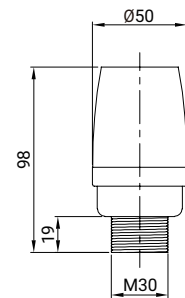
φ32 type

Mount bracket

Technical Diagram

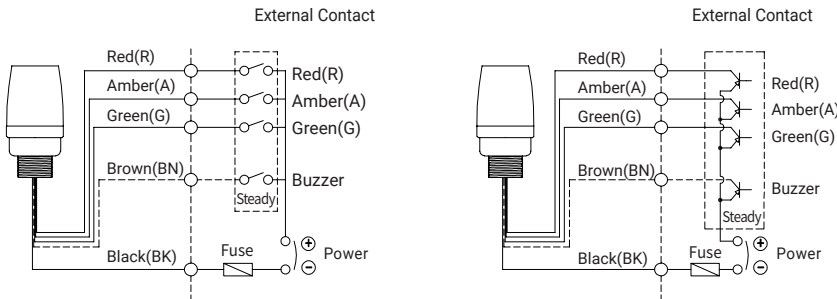
Units: mm

- EMCL50U / EMCL50U-BZ



Wiring Instructions

- EMCL50U / EMCL50U-BZ



M12 connector equipped

5PIN CONNECTOR	No.	Color	Wiring
	1	RED	Pin 1
	2	AMBER	Pin 2
	3	GREEN	Pin 3
	4	Common	Pin 4
	5	Buzzer	Pin 5

Ordering Specification

EMCL50U	-	24	-	RAG	-	M12
[Model number] EMCL50U EMCL50U-BZ		[Voltage] 24-DC24V		[Color] ● R-Red ● A-Amber ● G-Green		[Cable] None-External contact M12-M12 connector type

Customization

- M12 Five- Core Cable/1.5m
- NPN type