



EBL

PRODUCT SPECIFICATION

EBL

Materials

Housing-Al, Lens-Tempered glass, Bracket-STS
Ambient operating temperature -25°C to +55°C
Protection rating IP67

- Waterproof, dustproof, oil-resistant LED economy type work light
- Excellent oil resistance in machine tools where high-temperature cutting oil is used
- Low power consumption and long life by using high-efficiency LED
- Among body lengths of 300/500/600mm, select a suitable specification according to the lighting range and installation space
- 1.5m cable withdrawal type is standard specification, M12 connector mounting type can be selected as an order specification

EBL LED Work Lights

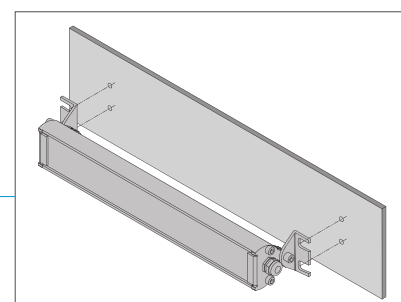
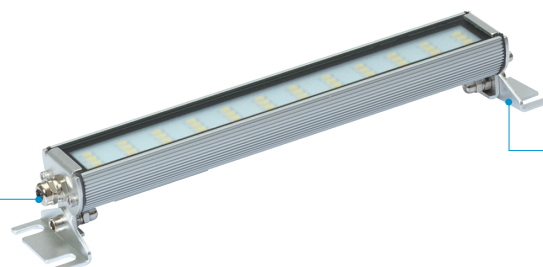
		Optics Specifications		
Model number		EBL300	EBL500	EBL600
Lens Color			Transparent	
Light color			Cooldaylight	
Directions			6,000-6,500K	
Luminous flux	DC	-	1,500lm	1,800lm
	AC	1,000lm	-	-
Efficacy (lm/W)	DC	-	700Lux	700Lux
	AC	300Lux	-	-

		Specifications		
Model number		EBL300	EBL500	EBL600
Voltage		AC220V	DC24V	DC24V
Range for operation voltage		AC200~240V	DC24V	DC24V
Power consumption	DC24V	-	15W	18W
	AC220V	10W	-	-
Insulation resistance		Min. 100MΩ(500V DC mega ohm meter)		
Withstanding voltage		DC: 500VAC, 60Hz, 1 minute/AC: 1,500VAC, 60Hz, 1 minute		
Operating temperature		-25°C to +55°C		
Protection rating		IP67		
Materials		Housing-Al, Lens-Tempered glass, Bracket-STS		
Certification		CE		
Weight(Approx.)		0.50kg	0.70kg	0.80kg

※ CE certification : DC24V

Structural features

M12 connector

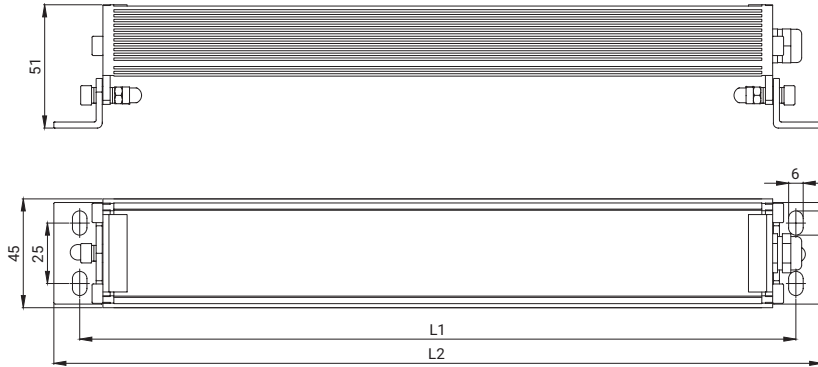


Mount bracket



Technical Diagram • EBL

Units: mm



Model number	L1	L2
EBL300	296	316
EBL500	508	528
EBL600	584	604

Ordering Specification

EBL	-	300	-	24
[Model number]		[Product length]		[Voltage]
EBL		300-316mm 500-528mm 600-604mm		24-DC24V 220-AC220V