



EPLS

PRODUCT SPECIFICATION

EPLS

Materials Housing-Al, Lens-PC
Ambient operating temperature -25°C to +55°C
Protection rating IP20

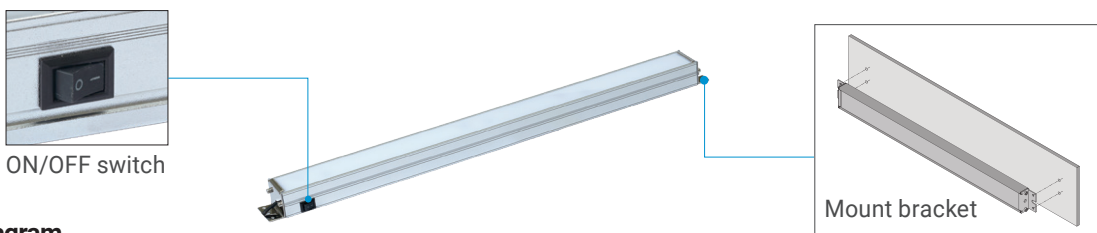
- Economical lighting with excellent vibration resistance and heat dissipation
- Low power consumption and long life by using high-efficiency LED
- As a switch-mounted type, power can be controlled through an ON/OFF switch
- Among body lengths of 380/550mm, select a suitable specification according to the lighting range and installation space

EPLS LED Work Lights

Optics Specifications			
Model number	EPLS380		EPLS550
Lens Color	Translucent		
Light color	Cooldaylight		
Directions	6,000-6,500K		
Luminous flux	DC	1,000lm	1,500lm
Efficacy(lm/W)	DC	300Lux	500Lux
Specifications			
Model number	EPLS380		EPLS550
Voltage	DC24V		
Range for operation voltage	DC24V		
Power consumption	DC24V	10W	15W
Insulation resistance	Min. 100MΩ(500V DC mega ohm meter)		
Withstanding voltage	DC: 500VAC, 60Hz, 1 minute/AC: 1,500VAC, 60Hz, 1 minute		
Operating temperature	-25°C to +55°C		
Protection rating	IP20		
Materials	Housing-Al, Lens-PC		
Certification	CE		
Weight(Approx.)	0.27kg		0.40kg

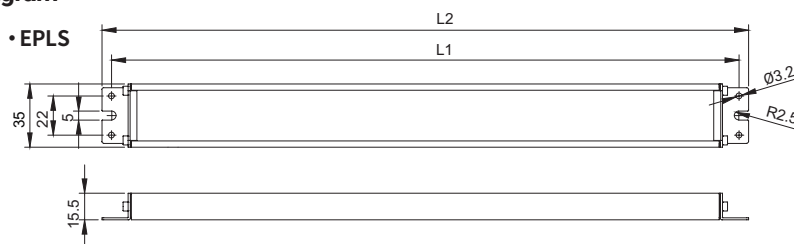
※ CE certification : DC24V

Structural features



Technical Diagram

Units: mm



Model	L1	L2
EPLS380	380	391
EPLS550	545	556

Ordering Specification

EPLS	-	380	-	24
[Model number]		[Product length]		[Voltage]
EPLS		380-391mm 550-556mm		24-DC24V