

# Self-Propelled Telescopic Booms

S™-80 X & S™-85

## Specifications

Models	S-80 X		S-85	
Measurements	US	Metric	US	Metric
Working height maximum*	86 ft	26.20 m	91 ft	27.70 m
Platform height maximum	80 ft	24.40 m	85 ft	25.90 m
Horizontal reach maximum	71 ft 6 in	21.80 m	76 ft 6 in	23.30 m
Below ground reach	6 ft 1 in	1.85 m	9 ft 6 in	2.89 m
<b>A</b> Platform length - 8 ft model	3 ft	0.91 m	3 ft	0.91 m
Platform length - 6 ft model	2 ft 6 in	0.76 m	2 ft 6 in	0.76 m
<b>B</b> Platform width - 8 ft model	8 ft	2.44 m	8 ft	2.44 m
Platform width - 6 ft model	6 ft	1.83 m	6 ft	1.83 m
<b>C</b> Height - stowed	9 ft 2 in	2.80 m	9 ft 2 in	2.80 m
<b>D</b> Length - stowed	36 ft 6 in	11.10 m	40 ft	12.20 m
Length - transport (jib tucked under)	—	—	38 ft	11.60 m
<b>E</b> Width	8 ft 2 in	2.50 m	8 ft 2 in	2.50 m
<b>F</b> Wheelbase	9 ft 4 in	2.80 m	9 ft 4 in	2.80 m
<b>G</b> Ground clearance - center	15.8 in	0.40 m	15.8 in	0.40 m

## Productivity

Lift capacity	500 lb/ 1000 lb	227 kg/ 454 kg	500 lbs	227 kg
Platform rotation	160°		160°	
Vertical jib rotation	—		135°	
Turntable rotation	360° continuous		360° continuous	
Turntable tailswing	4 ft 8 in	1.42 m	4 ft 8 in	1.42 m
Drive speed - stowed - 2WD/4WD	3.3 mph	5.3 km/h	3.3 mph	5.3 km/h
- raised/extended	0.65 mph	1.0 km/h	0.65 mph	1.0 km/h
Gradeability - 2WD - stowed**	30%		30%	
- 4WD - stowed**	45%		45%	
Turning radius: inside	12 ft	3.70 m	12 ft	3.70 m
outside	21 ft 6 in	6.60 m	21 ft 6 in	6.60 m
Controls	12V DC proportional		12V DC proportional	
Tires - RT lug	Foam filled 18-625, 16 ply		Foam filled 18-625, 16 ply	

## Power

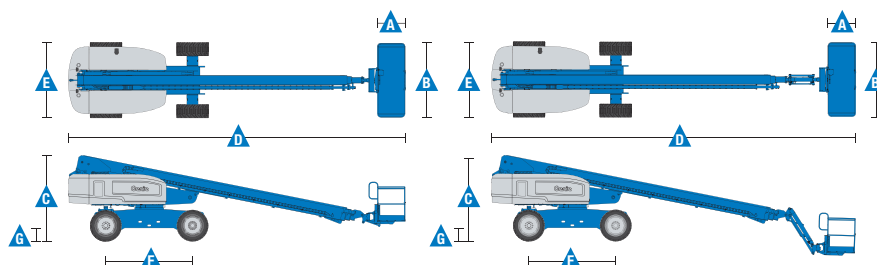
Power source	74 hp (55 kW) Deutz turbo diesel T4i TD2011L04i 63 hp (47 kW) Perkins diesel T4i 804D-33 74 hp (55 kW) Continental gas/LPG TME27			
Auxiliary power unit	12V DC			
Hydraulic tank capacity	40 gal	150 L	40 gal	150 L
Fuel tank capacity - diesel	35 gal	132 L	35 gal	132 L
- gas/LPG	30 gal	113.6 L	30 gal	113.6 L

## Weight\*\*\*

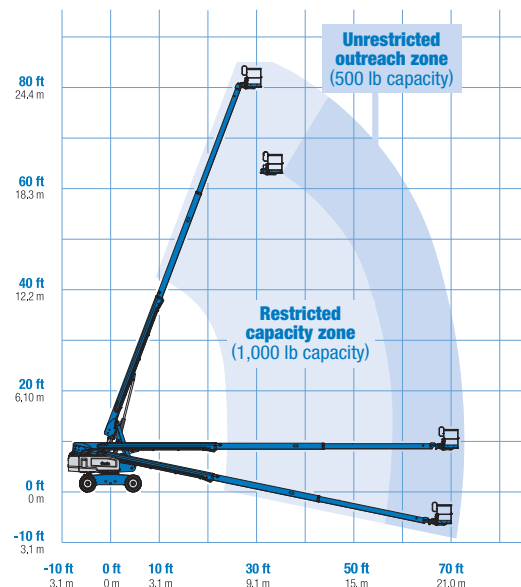
2WD	35,400 lbs	16,057 kg	37,900 lbs	17,191 kg
4WD	35,500 lbs	16,102 kg	38,000 lbs	17,236 kg

## Standards Compliance

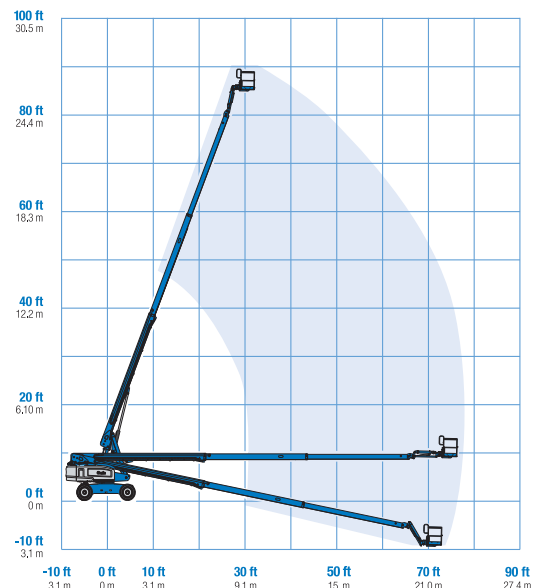
ANSI A92.5, CSA B354.4, EN 280, AS 1418.10



## Range Of Motion S-80 X



## Range Of Motion S-85 (500 lb capacity)



\* The metric equivalent of working height adds 2 m to platform height. U.S. adds 6 ft to platform height.

\*\* Gradeability applies to driving on slopes. See operator's manual for details regarding slope ratings.

\*\*\* Weight will vary depending on options and/or country standards.

## Features

Standard Features	Easily Configured To Meet Your Needs	Options & Accessories
<b>Measurements</b> <b>S-80 X*</b> <ul style="list-style-type: none"> <li>86 ft (26.38 m) working height</li> <li>71 ft 6 in (21.8 m) horizontal reach</li> <li>500 lbs (227 kg) unrestricted and 1000 lbs (454 kg) restricted lift capacity</li> </ul> <b>S-85</b> <ul style="list-style-type: none"> <li>91 ft (27.90 m) working height</li> <li>76 ft 6 in (23.3 m) horizontal reach</li> <li>500 lbs (227 kg) lift capacity</li> </ul> <b>Productivity</b> <ul style="list-style-type: none"> <li>Self-leveling platform</li> <li>160° hydraulic platform rotation</li> <li>Proportional joystick controls</li> <li>Drive enable</li> <li>AC power cord to platform</li> <li>Horn</li> <li>Hour meter</li> <li>Tilt alarm</li> <li>Descent alarm</li> <li>360° continuous turntable rotation</li> <li>Positive traction drive</li> <li>Two speed wheel motors</li> </ul> <b>Power</b> <ul style="list-style-type: none"> <li>12V DC auxiliary power</li> <li>Anti-restart engine protection</li> <li>Auto engine fault shutdown</li> <li>Catalytic converter muffler (Continental engine only)</li> <li>Engine block heater (Continental engine only)</li> </ul>	<b>Platform Options</b> <ul style="list-style-type: none"> <li>Steel 8 ft (2.44 m) (standard)</li> <li>Steel 6 ft (1.83 m)</li> <li>Steel 8 ft (2.44 m) tri-entry</li> </ul> <b>Jib Options</b> <ul style="list-style-type: none"> <li>Non-jib (S-80 only)</li> <li>5 ft (1.52 m) jib boom (S-85 only)</li> </ul> <b>Engine Options</b> <ul style="list-style-type: none"> <li>74 hp (55 kW) Deutz turbo diesel T4i (standard)</li> <li>63 hp (47 kW) Perkins diesel T4i</li> <li>74 hp (55 kW) Continental gas/LPG</li> </ul> <b>Drive Options</b> <ul style="list-style-type: none"> <li>2WD</li> <li>4WD (standard)</li> </ul> <b>Axle</b> <ul style="list-style-type: none"> <li>Active oscillation</li> </ul> <b>Tire Options</b> <ul style="list-style-type: none"> <li>Rough terrain foam-filled (standard)</li> <li>Rough terrain non-marking foam-filled</li> <li>High floatation air-filled (Increases width by 4 in)</li> </ul>	<b>Productivity Options</b> <ul style="list-style-type: none"> <li>Platform swing gate</li> <li>Half mesh platform inserts with swing gate</li> <li>Platform top auxiliary rail</li> <li>Welder Ready package</li> <li>Weld leads to platform</li> <li>Air line to platform</li> <li>Hydraulic oil cooler</li> <li>Biodegradable hydraulic oil</li> <li>Hostile environment kit</li> <li>Deluxe hostile environment kit</li> <li>Aircraft protection package (6 ft platform only)</li> <li>Thumb rockersteer</li> <li>Tool tray</li> <li>Alarm package</li> <li>Panel cradle package (tri-entry platform)</li> <li>Lockable platform control box covers</li> <li>Tow package</li> <li>Work light package</li> <li>Operator Protective Structure</li> </ul> <b>Power Options</b> <ul style="list-style-type: none"> <li>Engine gauge package</li> <li>AC generator packages (110V/-220V/50Hz, 3000W)</li> <li>Cold Weather Packages</li> <li>Diesel scrubber/spark arrestor muffler (catalytic muffler)</li> <li>LPG tank only, steel, 33.5 lbs (15.19 kg) capacity</li> <li>Intake air pre-cleaner</li> </ul>



\* Not available on CE machines

### Genie United States

18340 NE 76th Street  
P.O. Box 97030  
Redmond, Washington 98073-9730  
Telephone +1 (425) 881-1800  
Toll Free in USA/Canada +1 (800)-536-1800  
Fax +1 (425) 883-3475

### Distributed By:

Effective Date: January, 2014. Product specifications and prices are subject to change without notice or obligation. The photographs and/or drawings in this document are for illustrative purposes only. Refer to the appropriate Operator's Manual for instructions on the proper use of this equipment. Failure to follow the appropriate Operator's Manual when using our equipment or to otherwise act irresponsibly may result in serious injury or death. The only warranty applicable to our equipment is the standard written warranty applicable to the particular product and sale and we make no other warranty, express or implied. Products and services listed may be trademarks, service marks or trade names of Terex Corporation and/or their subsidiaries in the USA and many other countries. Genie is a registered trademark of Terex South Dakota, Inc. © 2014 Terex Corporation.