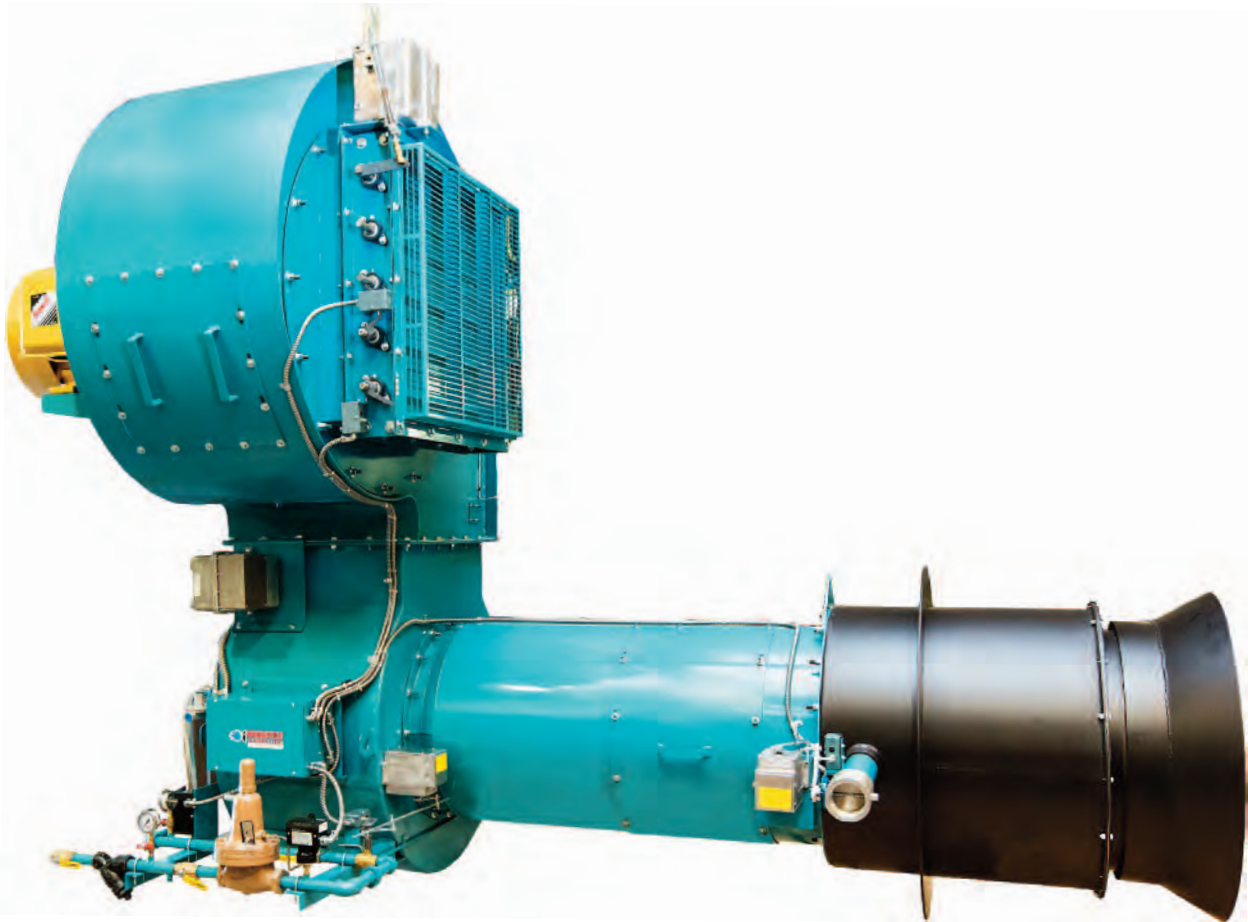


HDRA-RF Series Burners

Multi-Fuel Burners for the Asphalt and Aggregate Drying Industry



Total Air Burner with Automatic Flame Shaping
For Firing Rates from 50,000,000 up to 200,000,000 Btu/Hr

Benefits Of The HDRA-RF Multi-Fuel Burner



The Webster Combustion model HDRA-RF is a register-style burner that allows users to shape the flame by automatically controlling the register vanes to optimally fit their dryer and combustion zone. This allows the Webster burner to operate with a shorter flame than products offered by other burner manufacturers. This flame-shaping capability means the flame will not impinge on the material, and CO can be maintained at much lower levels than currently available. In addition, NO_x levels for the HDRA-RF are significantly lower than typically seen in

drying applications.

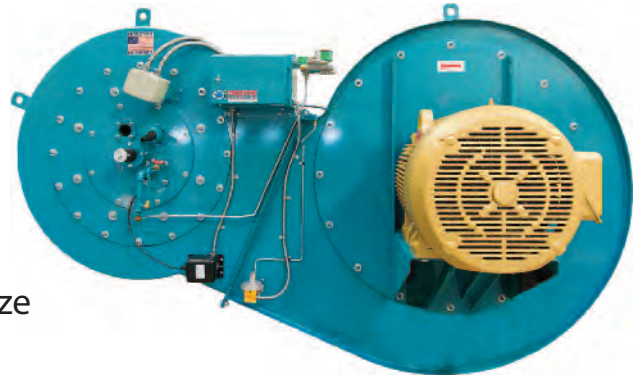
The Webster Combustion HDRA-RF operates with lower motor HP, an optionally supplied VFD and an inlet air damper, which allows for higher turndown ranges to reduce energy usage and provide greater total energy savings.

The Webster Combustion HDRA-RF burner readily adapts to mount on both Parallel Flow and Counter Flow Dryers, and the burner housing and fan can be installed in multiple configurations depending on space constraints and elevator location. The Webster Combustion HDRA-RF Series Burner is capable of burning a wide range of fuels, either separately or simultaneously, including Natural and low BTU gas, all commercially available grades of fuel oil, and qualified waste oils. A dual-manifold combustion head is available for applications firing multiple gas fuels.

A wide choice of burner arrangements is available with the HDRA-RF package burner system. Webster's engineering team will assist you in designing the best arrangement for your application. Flexibility in design and assembly means that the HDRA-RF can be applied to a wide variety of dryers.

HDRA-RF Features

- Excellent flame stability for reliable performance
- Fully modulating register for automatic flame shaping
- Fire multiple fuels
 - ✦ Natural gas
 - ✦ No. 2 through No. 6 Oils
- Configurable blower housing to match application requirements
- Proven ignition system with an extremely stable pilot
- High efficiency combustion air fans to optimize electrical needs
- Access doors for easy service of firing head and fan for maintenance
- Remote mounted combustion air fan and motor
- Optional VFD and inlet air damper for precise air control
- Compressed air atomization for complete combustion
- Long nose options available

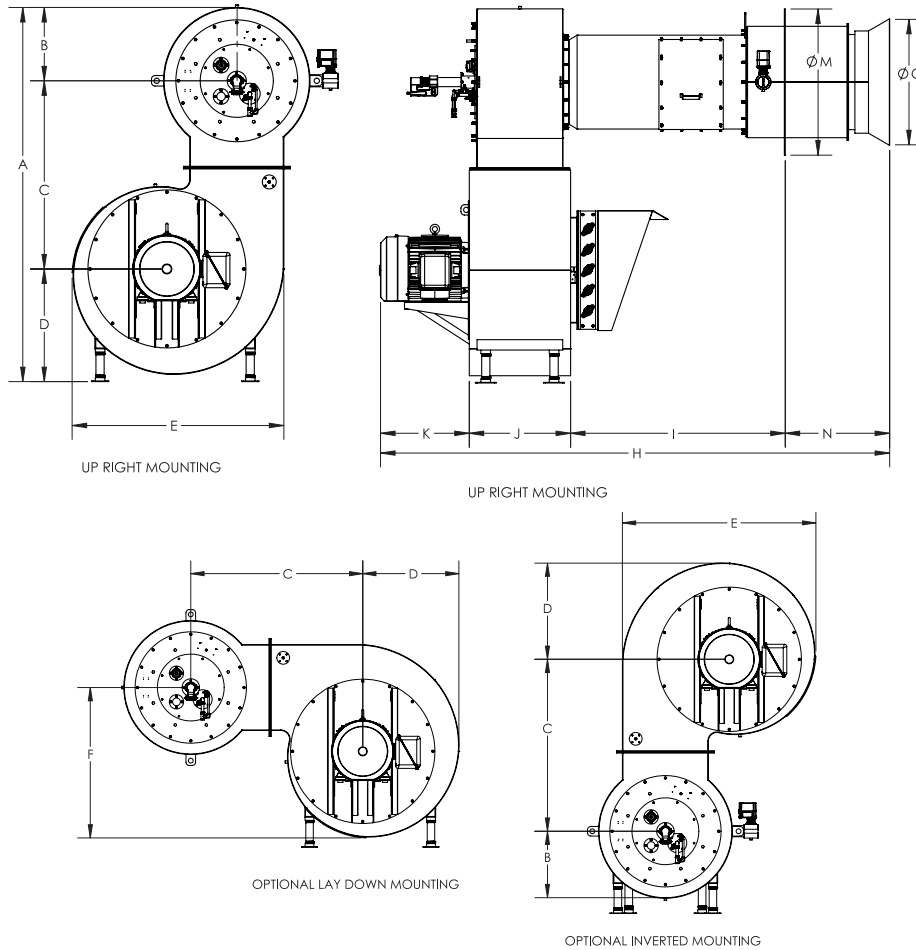


HDRA-RF Back View



Webster Combustion has the best lead times in the industry. For assistance in selecting the proper configuration or to obtain a quote, please contact us or your local Webster aggregate products representative.

HDRA-RF Series Typical Dimensions and Ratings



BURNER MODEL	MIN REQ'D GAS PRESS (PSIG)	STD GAS TRAIN SIZE	MAX FIRING RATE (MBH) STD	DIMENSIONS – INCHES												
				A	B	C	D	E	F	H	I	J	K	M	N**	O
HDRA-RF*-50	5	3"	50,000	96.7	18.2	51	27.5	55	42	100.4	61.7	21.1	18.7	36	30	30
HDRA-RF*-75	6	4"	75,000	109.5	24.2	55.1	30.2	60.5	46	107.2	61.7	24.5	22.1	40	30	34
HDRA-RF*-100	8	4"	100,000	123.7	24.2	69.3	30.2	60.5	46	117.9	61.7	32.8	24.3	42	30	36
HDRA-RF*-125	10	4"	125,000	137.9	31.9	72.5	33.5	67	51	118.8	61.7	32.8	25.2	44	30	38
HDRA-RF*-150	10	6"	150,000	144.4	31.9	75.6	36.9	73.8	56	123.3	61.7	32.8	25.9	48	30	42
HDRA-RF*-175	10	6"	175,000	144.4	31.9	75.6	36.9	73.7	56	119.5	61.7	32.8	25.9	50	30	44
HDRA-RF*-200	10	6"	200,000	144.4	31.9	75.6	36.9	73.7	56	119.5	61.7	32.8	25.9	50	30	44

* Can be "G" (Gas), "O" (Oil) or "C" (Combination Gas/Oil). **30" is standard insertion depth. Contact Webster for change in insertion depth.
All dimensions are reference only. Webster can change dimensions at any time without notice.



The Better Burner.

Represented By

619 Industrial Road, Winfield, KS 67156 / Phone: 620-221-7464 / Fax: 620-221-9447
www.webster-engineering.com / sales@webster-engineering.com