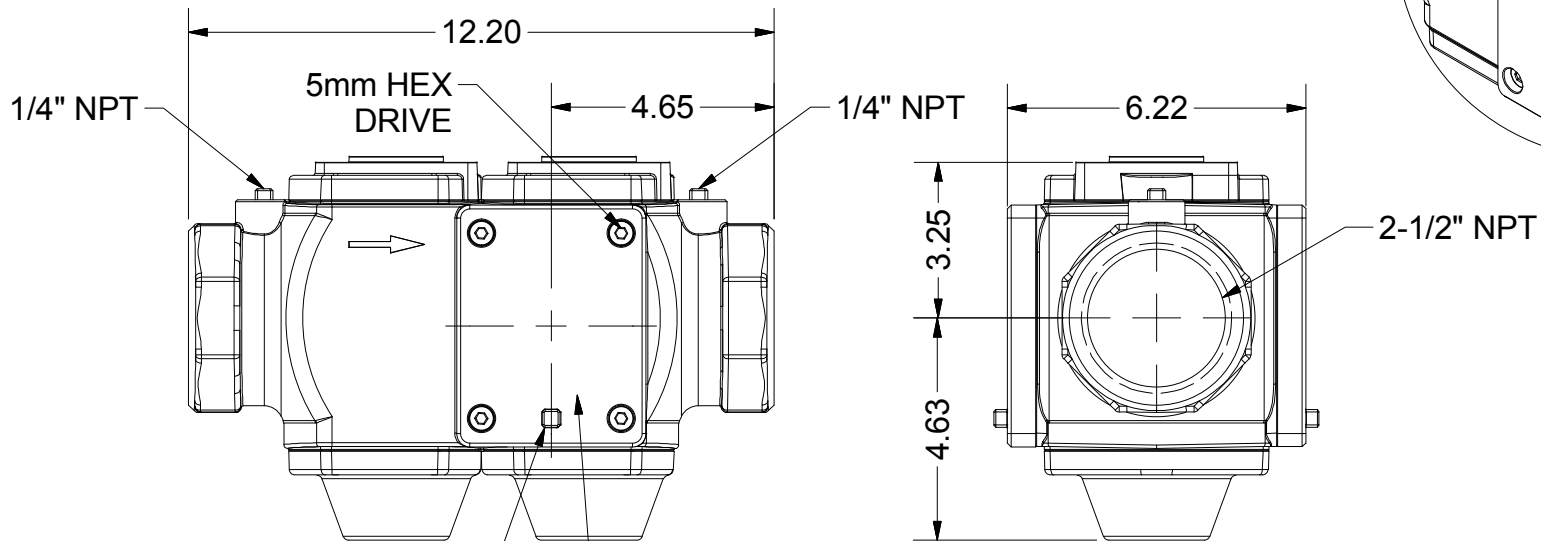


2

1

B

B



1/4" NPT PLUGGED TEST PORT TYP. (2)

VENT CONNECTION PLATE TYP. (2)
 STANDARD: PLATE WITHOUT VENT LINE CONNECTION PORT
 SOLD SEPARATELY: **AGA40.6580U** (1-1/4" NPT VENT LINE CONNECTION)

NOTE: DIMENSIONS FOR REFERENCE ONLY

REV. **1**

MATERIAL VALVE BODY: ALUMINUM		SCC Inc. Elk Grove Village, IL 60007 PH# 224-366-8445		DESCRIPTION Double Gas Valve Body (2-1/2" NPT)			
FINISH				ENGINEER	DRAWN BY	CHECKED BY	DATE ORIGINATED
TOLERANCES (UNLESS OTHERWISE SPECIFIED)		ALL DIMENSIONS IN INCHES UNLESS NOTED			1/7/2013	1 of 1	1 / 4
FRACT.	.XX	.XXX	ANG.				
$\pm 0/00$	± 0.01	± 0.005	$\pm 0.5^\circ$				
This Drawing and all information contained in this Drawing is the Property of SCC Inc.				PART / DRAWING # VG40.065U			

A

A

2

1