



Description:

Stainless Steel Accurate Pressure Gauges are designed for pressure measurements in different industrial applications where high accuracy is needed. Stainless Steel Accurate Pressure Gauges have various case designs and wide pressure measurement ranges and are all compatible with process fluids that do not attack AISI 316L. The filling liquid used in the products lessens the effects of high dynamic pressure loads and vibration to the pressure gauge.

Industrial Applications:

Water & Waste-Water treatment plants, machine building, HVAC systems, hydraulic and pneumatics, process lines

General Specifications

Conformity:

EN 837-1

Sizes (mm):

Ø100, Ø160, Ø250

Unit:

bar/psi

Measurement Ranges:

-1/0, 0/0.6...1000 bar (-15/0, 0/9...15000 psi)

Equivalent compound gauge scales

Accuracy Class:

CL 1.0

Working Pressure:

75% of Full Scale

Overpressure Resistance:

1.25xFull Scale (Up to 100 bar)

1.15xFull Scale (From 100 bar to 600 bar)

1.1xFull Scale (Over 600 bar)

Ingress Protection Rate:

IP65

Versions:

Fillable

Liquid-Filled : Glycerin (Optional: Silicone Oil)

Working Temperature Range:

Ambient: -20...60°C

Process: 100°C (Liquid Filled)

200°C (Fillable)

Process Connections:

G1/2"B

Materials:

Bourdon Tube:

AISI 316L

Socket:

AISI 316L

Case:

AISI 316L

Cover:

AISI 316L

Movement:

Stainless Steel

Window:

Safety Glass

Dial:

Aluminium

Pointer:

Aluminium

Options:

Other process connections

Other pressure units

Dampened Movement (Vib-Lock)

Adjustable Pointer

Special dial design

Nitrogen (N) Dial

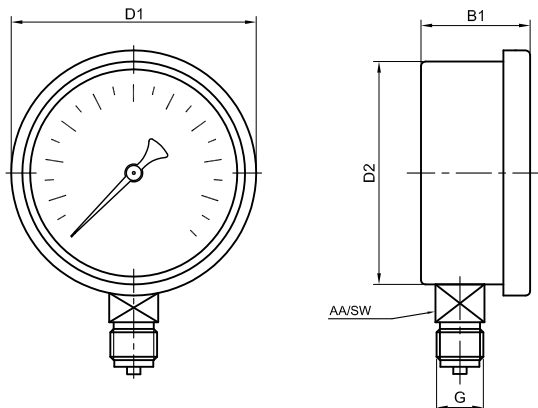
Oxygen (O) Dial

Argon (Ar) Dial

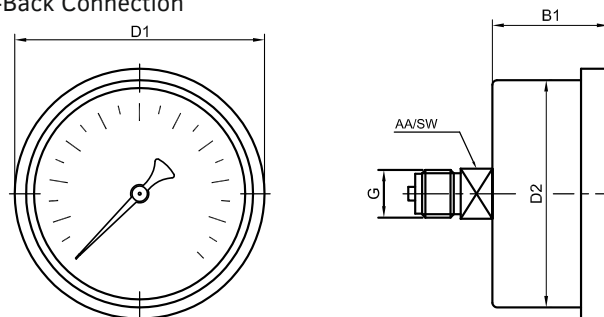
Ammonia (NH₃) Dial

Dimensions (mm)

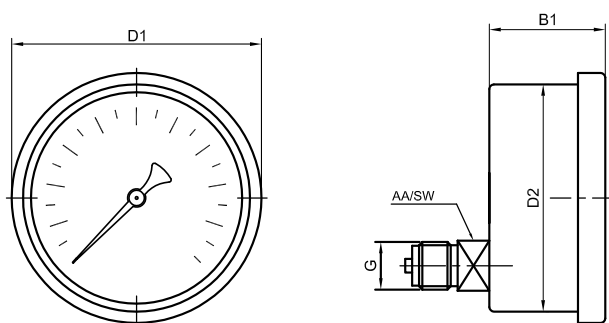
01-Bottom Connection



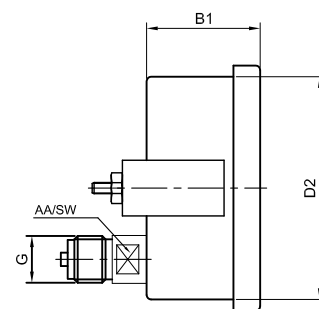
02-Back Connection



03-Lower Back



04-Lower Back Panel Mount



Ø	Connections	Version	Case	Window	Cover	D1	D2	B1	G	AA/SW
Ø100	Bottom	Standard	AISI316	Glass	AISI316	110	100	48	G1/2"	22
	Lower Back	Standard	AISI316	Glass	AISI316	110	100	48	G1/2"	22
	Lower Back Panel Mount	Standard	AISI316	Glass	AISI316	110	100	48	G1/2"	22
Ø160	Bottom	Standard	AISI316	Glass	AISI316	174	158	48	G1/2"	22
	Lower Back	Standard	AISI316	Glass	AISI316	174	158	48	G1/2"	22
	Lower Back Panel Mount	Standard	AISI316	Glass	AISI316	174	158	48	G1/2"	22
Ø250	Bottom	Standard	AISI316	Glass	AISI316	250	242,8	52	G1/2"	22
	Back	Standard	AISI316	Glass	AISI316	250	242,8	52	G1/2"	22

How To Order?

	Gauge Size	Product	Accuracy Class	Pressure Sensing Element	Liquid Filling	Process Connection Type	Pressure Range	Additional Features
SAMPLE ORDERING CODE	100	1	0	0	0	1	**	**
Gauge Size	100 160 250							
Product		1 Manometer 2 Vacuummeter/Compound Gauge 3 Hydrometer (mws-mmws)						
Accuracy Class			1 Cl. 1.0 Bourdon Group					
Pressure Sensing Element				1 AISI 316L				
Liquid Filling					0 Standard (Ø250) 1 Glycerine Filled 2 Fillable 3 Ex-Proof Fillable 4 Ex-Proof Glycerine Filled 7 IP65			
Process Connection						1 Bottom 4 Lower Back 5 Lower Back Panel Mount		
Pressure Range							01 0,6 (-760) 02 1 (-1) 03 1,6 (-1+0,6) 04 2,5 (-1+1,5) 05 4 (-1+3) 06 6 (-1+5) 07 10 (-1+9) 08 16 (-1+15) 09 25 10 40 11 60 12 100 13 160 14 250 15 280 16 315 17 400 18 600 19 1000 20 1600 21 2500 22 4000 23 6000 24 10000 25 16000	
Additional Features								02 G 1/8" 03 1/8" NPT 04 G 1/4" 05 1/4" NPT 06 G 3/8" 07 3/8" NPT 08 G 1/2" 09 1/2" NPT B bar P psi BP bar/psi PB psi/bar SI Drag Pointer N Azot AR Argon O Oxygen NH Ammonia AI Adjustable Pointer

**For features that are not mentioned on the table, please contact our sales team.*

Approvals:



Turkish Standards Institution



ISO 9001 Quality Management System



TURKAK Calibration Laboratory Accreditation Certificate



2014/68/EU Pressure Equipment Directive - Certificate of Conformity



2011/65/EU Restriction of Hazardous Substances Directive - Declaration of Conformity



Gost Certificate



2014/34/EU Equipment and Protective Systems Intended for use in Potentially Explosive Atmospheres - Certificate of Conformity

*System and quality certifications of PAKKENS Inc.
Product and product group certifications may vary*