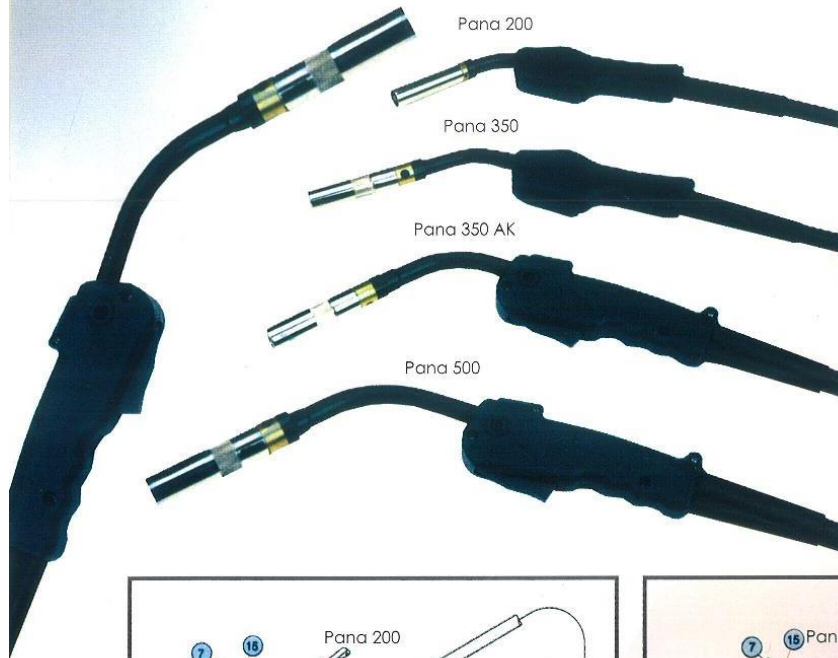


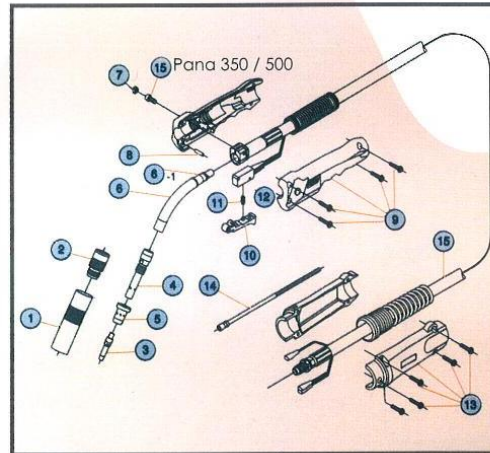
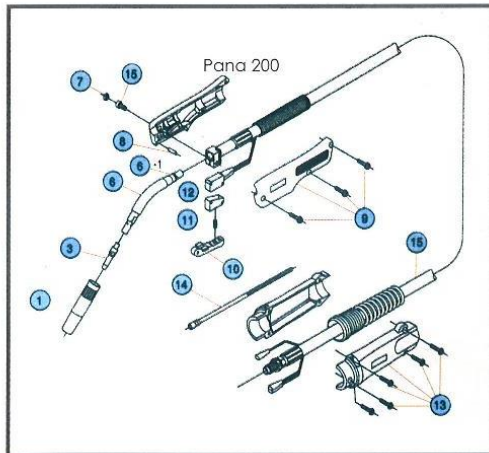


## CO<sub>2</sub> / MIG / MAG Welding Torch



### Standard Components

1	Nozzle
2	Insulator
3	Contact Tip
4	Tip Body
5	Orifice
6	Torch Body
6 - 1	O Ring
7	Cap
8	Flat Pin
9	Handle
10	Trigger
11	Spring
12	Micro Switch
13	Cable Support
14	Liner
15	Power Cable



### Pana Series CO<sub>2</sub> / MIG / MAG Welding Torch

Specification \ Model	Pana 200	Pana 350 / 350 AK	Pana 500
Cooling Method	Air Cooled	Air Cooled	Air Cooled
Recommend wire Dia.	0.8 ~ 1.2 mm	0.8 ~ 1.2 mm	1.0 ~ 1.6 mm
Max Capacity (A)	200	350	500
Gas @ Duty Cycle (%)	CO <sub>2</sub> @ 40%	CO <sub>2</sub> @ 70% / 30%	CO <sub>2</sub> @ 50%
	MAG @ 30%	MAG @ 35% / 20%	MAG @ 30%
Cable Length	3m, 4m, 5m	3m, 4m, 5m	3m, 4m, 5m
Connector Fitting (std)	Euro	Euro	Euro

Remarks: Panasonic, Tokin or O.T.C connector fitting are available upon requested.