



TPN19

Inner Tube to Tube-sheet Welding Head

Brief Introduction

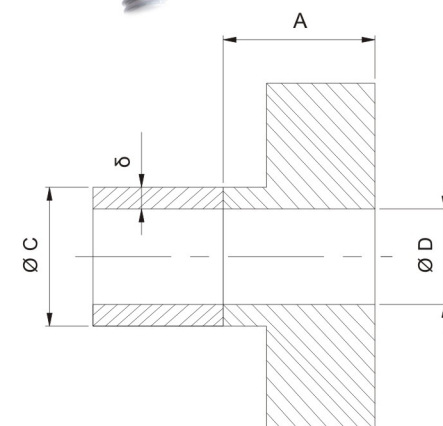
This welding head is specially designed for Inner tube to tube-sheet TIG welding, suitable for carbon steel, stainless steel, without wire feeding. Tube ID should $>\Phi 19\text{mm}$.

Support equipment: i-Arc400 Programmable Orbital Welding Power Source.

Application: petrochemical, boiler, military, nuclear and so on.

Features

- Suitable for the heat exchanger inner tube to tube-sheet welding in petrochemical industry;
- Minimum inner tube diameter of $\Phi 19\text{mm}$;
- Precise position, easy for operation;
- Suitable for carbon steel and stainless steel;
- Customization according to specific requirements.



Technical Specification

Material	Carbon steel, stainless steel
Tube OD (mm)	$\geq \Phi 19$
Depth for Inner Tube (mm)	20 ~ 120
Tube thickness (mm)	1 ~ 2.5
Connection	Tube insert, flush tube
Tungsten diameter (mm)	$\Phi 2.4$
Rotation speed (rpm)	0.37 ~ 7.39
Arc adjusting distance (mm)	15
Protective gas	Ar
Cooling	Water
Cooling flow (ml/min)	≥ 600
Weight (kg)	11 (no cable)
Dimension (mm)	570 × 290 × 510

