

# PARTS LIST FOR DC-400

Index of Sub Assemblies

Illustration of Sub Assemblies

Illustration of Sub Assemblies

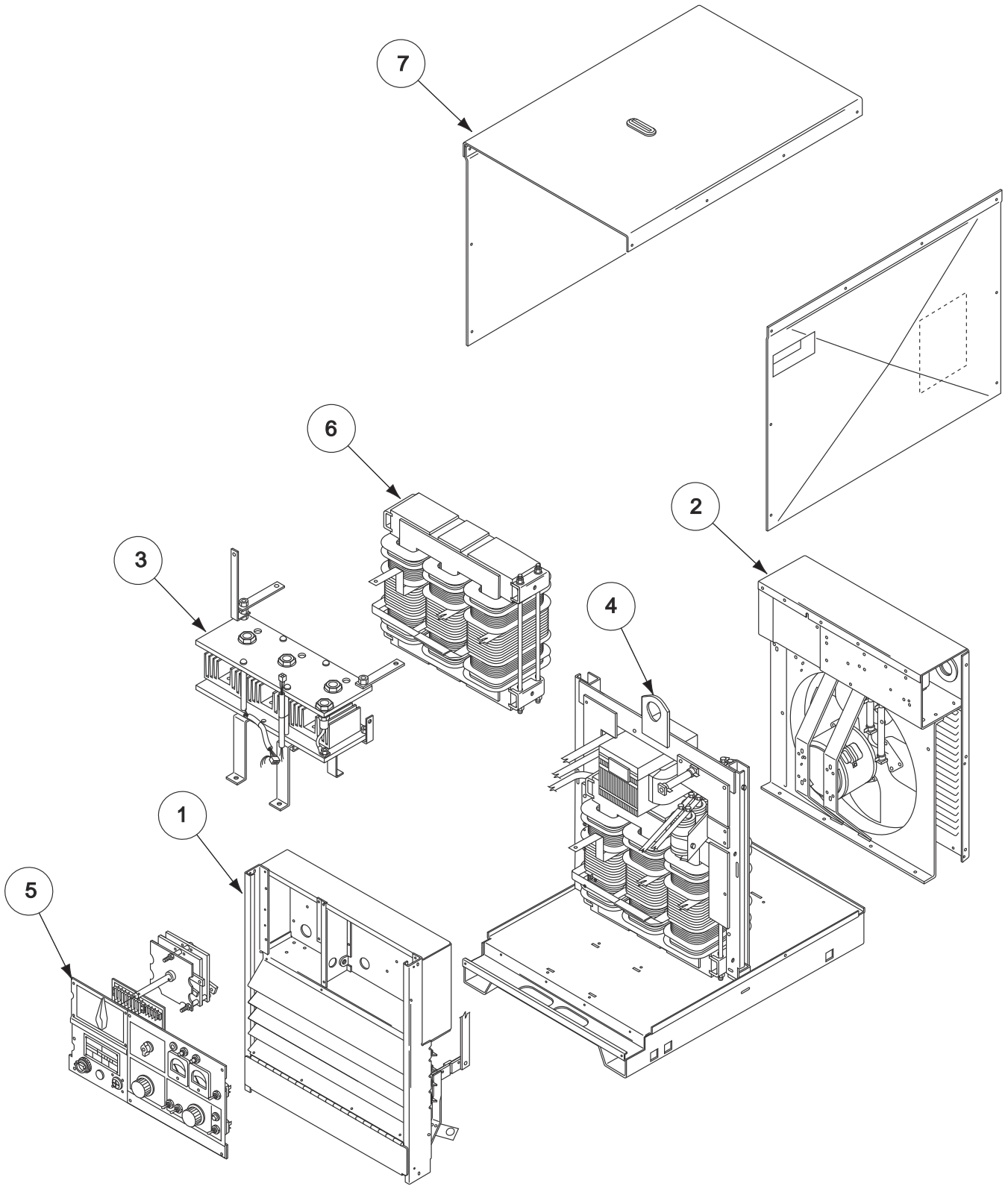
Illustration of Sub Assemblies

Illustration of Sub Assemblies

DC-400



# ILLUSTRATION OF SUB-ASSEMBLIES



Index of Sub Assemblies

## DC-400 (Above Codes 9800) For Codes: 9847 to 11353

Do Not use this Parts List for a machine if its code number is not listed. Contact the Service Department for any code numbers not listed.

Use the Illustration of Sub-Assemblies page and the table below to determine which sub assembly page and column the desired part is located on for your particular code machine.

Sub Assembly Item No.			1	2	3	4	5	6	7
SUB ASSEMBLY PAGE NAME	Optional Equipment	Miscellaneous Items	Case Front Assembly	Fan Baffle & Reconnect Panel	Rectifier Bridge Assembly	Transformer & Lift Bale Assembly	Control Box Cover Assembly	Coil Assemblies	Roof & Sides
PAGE NO.	P-234-B.1	P-234-B.2	P-234-C	P-234-D	P-234-E	P-234-F	P-234-G	P-234-H	P-234-J
CODE NO.									
9847 230/460		1	1	1	1	1	1	1	1
9848 208		1	1	1	1	1	1	1	1
9849 575		1	1	1	1	1	1	1	1
9850 230/460/575		1	1	1	1	1	1	1	1
9851 220/440		1	1	1	1	1	1	1	1
9852 220/380/440		1	1	1	1	1	1	1	1
9854 200/400		1	1	1	1	1	1	1	1
9855 380/500		1	1	1	1	1	1	1	1
9857 415		1	1	1	1	1	1	1	1
10008 220/380/440		1	1	1	1	1	1	1	1
10275 380/500		1	1	1	1	1	1	1	1
10276 220/380/440		1	1	1	1	1	1	1	1
10859 230/460/575		1	2	1	1	1	2	1	2
10880 230/460/575		1	2	1	1	1	2	1	2
11083 230/460/575		1	2	1	2	1	2	1	2
11084 230/460/575		1	2	1	2	1	3	1	2
11277 230/400		1	2	1	2	1	1	1	2
11278 220/380/440		1	2	1	2	1	1	1	2
11279 220/380/440		1	2	1	2	1	1	1	2
11348 230/400		1	2	1	2	1	4	1	2
11349 230/460/575		1	2	1	2	1	5	1	2
11350 230/460		1	1	1	1	1	4	1	1
11351 230/460		1	1	1	1	1	4	1	1
11352 220/380/440		1	2	1	2	1	4	1	2
11353 220/380/440		1	2	1	2	1	4	1	2
11567 415		1	1	1	1	1	6	1	1

Illustration of Sub Assemblies

## DC-400 (Above Codes 9800) For Codes: 9847 to 11353

Do Not use this Parts List for a machine if its code number is not listed. Contact the Service Department for any code numbers not listed.

Use the Illustration of Sub-Assemblies page and the table below to determine which sub assembly page and column the desired part is located on for your particular code machine.

Sub Assembly Item No.									
SUB ASSEMBLY PAGE NAME	Diode Option	Multi-Process Switch							
PAGE NO.	P-234-K	P-239-C							
CODE NO.									
9847	1	1							
9848	1	1							
9849	1	1							
9850	1	1							
9851	1	1							
9852	1	1							
9854	1	1							
9855	1	1							
9857	1	1							
10008	1	1							
10275	1	1							
10276	1	1							
10859	•	•							
10880	•	1							
11083	•	•							
11084	•	1							
11277	•	•							
11278	•	•							
11279	•	1							
11348	•	•							
11349	•	•							
11350	1	1							
11351	1	1							
11352	•	•							
11353	•	1							
11567	•	•							

Illustration of Sub Assemblies

# NOTES

---

Index of Sub Assemblies

Index of Sub Assemblies

Index of Sub Assemblies

Index of Sub Assemblies

DC-400



# OPTIONAL EQUIPMENT LISTING

Miscellaneous Options Available for your machine are listed below:

# Indicates a change this printing.

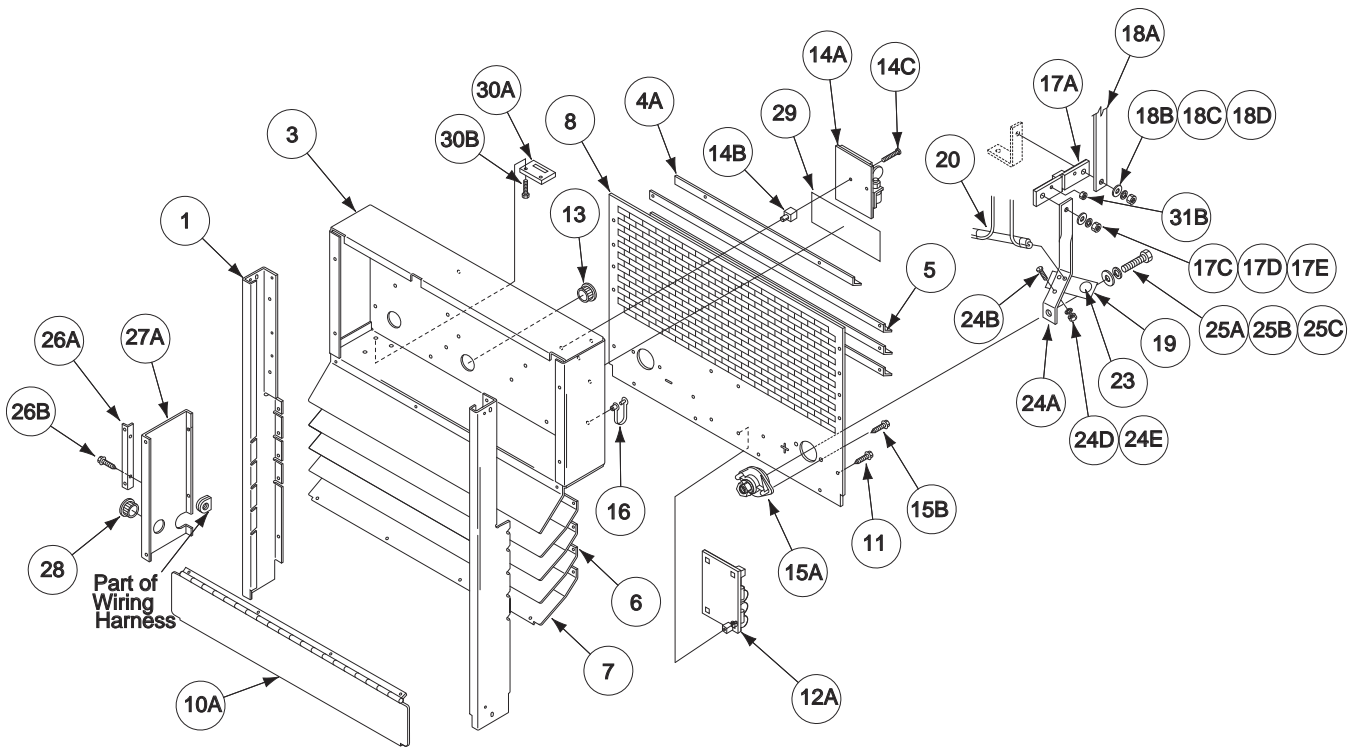
DESCRIPTION .....	PART NUMBER
Remote Output Control .....	Order K775
Hi-Freq. ....	Order K799
Multi-Process Switch .....	Order K804-1
Undercarriage (3 Wheels) .....	Order K817
Undercarriage (3 Rubber Wheels) .....	Order K817R
Hand Amptrol .....	Order K812
Foot Amptrol .....	Order K870
Capacitor Discharge Option .....	Order K828-1
Undercarriage (Twin Gas Cylinder) .....	Order K841
Amptrol Adapter .....	Order K843
Water Valve Option .....	Order K844
Remote Output Control .....	Order K857
Amptrol Adapter .....	Order K915-1
Remote Control Adapter .....	Order K864



Index of Sub Assemblies



# Case Front Assembly



Index of Sub Assemblies

Part Numbers

Index of Sub Assemblies

Part Numbers

Index of Sub Assemblies

Part Numbers

Index of Sub Assemblies

Part Numbers



# Indicates a change this printing.

Use only the parts marked "x" in the column under the heading number called for in the model index page.

ITEM	DESCRIPTION	PART NO.	QTY.	1	2	3	4	5	6	7	8	9
1	Case Front Welded Assembly	L7521-4	1	X	•							
1	Case Front Welded Assembly	L7521-8	1	•	X							
3	Control Box	L7510-1	1	X	X							
4A	Air Deflector	S18375	1	X	X							
4B	Self Tapping Screw (Not Shown)	S8025-91	2	X	X							
5	Air Deflector	S17353	3	X	X							
6	Louver	M15391-2	3	X	X							
7	Louver	M15391-3	1	X	X							
8	Output Panel	M15393	1	X	•							
8	Output Panel	M19603-1	1	•	X							
9	Self Tapping Screw (Not Shown)	S8025-91	12	X	X							
10A	Output Stud Cover Assembly	M17097	1	X	X							
10B	Self Tapping Screw (Not Shown)	S8025-92	4	X	X							
11	Self Tapping Screw	S8025-92	2	X	X							
12A	Snubber P.C. Board	M15370-[ ]	1	X	X							
12B	Self Tapping Screw (Not Shown)	S8025-97	4	X	X							
13	Universal Bushing	T14614-1	1	X	X							
14A	Starting P.C. Board	M14520-[ ]	1	X	X							
14B	Expansion Nut	S14020-3	2	X	X							
14C	Self Tapping Screw	S8025-15	2	X	X							
15A	Output Terminal Assembly	T14166-9	4	X	X							
15B	Self Tapping Screw	S8025-91	4	X	X							
16	Cable Hanger	T13496-2	3	X	X							
17A	Shunt	S6602-25	1	X	X							
17B	3/8-16 x 1.25 HHCS (Not Shown)	CF000105	1	X	X							
17C	Plain Washer	S9262-4	1	X	X							
17D	Lock Washer	E106A-16	1	X	X							
17E	3/8-16 HN	CF000067	1	X	X							
18A	Lead (Mode Switch to Negative Terminal)	M13607-10	1	X	X							
18B	Plain Washer	S9262-30	1	X	X							
18C	Lock Washer	E106A-14	1	X	X							
18D	5/16-18 HN	CF000029	1	X	X							
19	Reed Switch Plate	S11797-14	1	X	X							
20	Reed Switch Assembly	S12334-50	1	X	X							
21	Clamp (Not Shown)	T8970-17	2	X	X							
22	Self Tapping Screw (Not Shown)	S8025-76	2	X	X							
23	Marker (CR3)	T14798-3	1	X	X							
24A	Lead (Shunt to Positive Terminal) (W/Multi Process Switch)	M16549	1	X	X							
24B	3/8-16 x 1.00 HHCS	CF000019	1	X	X							
24C	Plain Washer (Not Shown)	S9262-4	1	X	X							
24D	Lock Washer	E106A-16	1	X	X							
24E	3/8-16 HN	CF000067	1	X	X							
25A	1/2-13 x .75 HHCS	CF000020	2	X	X							
25B	Plain Washer	S9262-1	2	X	X							
25C	Lock Washer	E106A-15	2	X	X							
26A	Support Bracket	S20738	1	X	X							
26B	Self Tapping Screw	S8025-92	2	X	X							
27A	Control Box Divider	S20739	1	X	X							
27B	Self Tapping Screw (Not Shown)	S8025-91	2	X	X							
28	Universal Bushing	T14614-3	1	X	X							

Index of Sub Assemblies  
 Sub Assembly Illustration  
 Index of Sub Assemblies  
 Sub Assembly Illustration  
 Index of Sub Assemblies  
 Sub Assembly Illustration  
 Index of Sub Assemblies  
 Sub Assembly Illustration

# Indicates a change this printing.

Use only the parts marked "x" in the column under the heading number called for in the model index page.

ITEM	DESCRIPTION	PART NO.	QTY.	1	2	3	4	5	6	7	8	9
29	Caution Decal	S13504	1	X	X							
30A	Lead Insulating Panel	S14525-2	1	X	X							
30B	Self Tapping Screw	S8025-91	2	X	X							
31A	Sems Screw (Not Shown)	T10082-4	2	X	X							
31B	#10-24 HN	CF000010	2	X	X							
32	Capacitor Assembly (Not Shown)	T14824	1	X	X							
35A	Case Front Support (Not Shown)	L7517-1	1	X	X							
35B	Case Front Support (Not Shown)	L7517-2	1	X	X							

**Note:** When ordering new printed circuit boards indicate the dash number [ ] of the "Old" board that is to be replaced. This will aid Lincoln in supplying the correct and latest board along with any necessary jumpers or adapters. The dash number brackets [ ] have purposely been left blank so as to eliminate errors, confusion and updates.

Index of Sub Assemblies  
 Sub Assembly Illustration  
 Index of Sub Assemblies  
 Sub Assembly Illustration  
 Index of Sub Assemblies  
 Sub Assembly Illustration  
 Index of Sub Assemblies  
 Sub Assembly Illustration

# NOTES

---

Index of Sub Assemblies

Index of Sub Assemblies

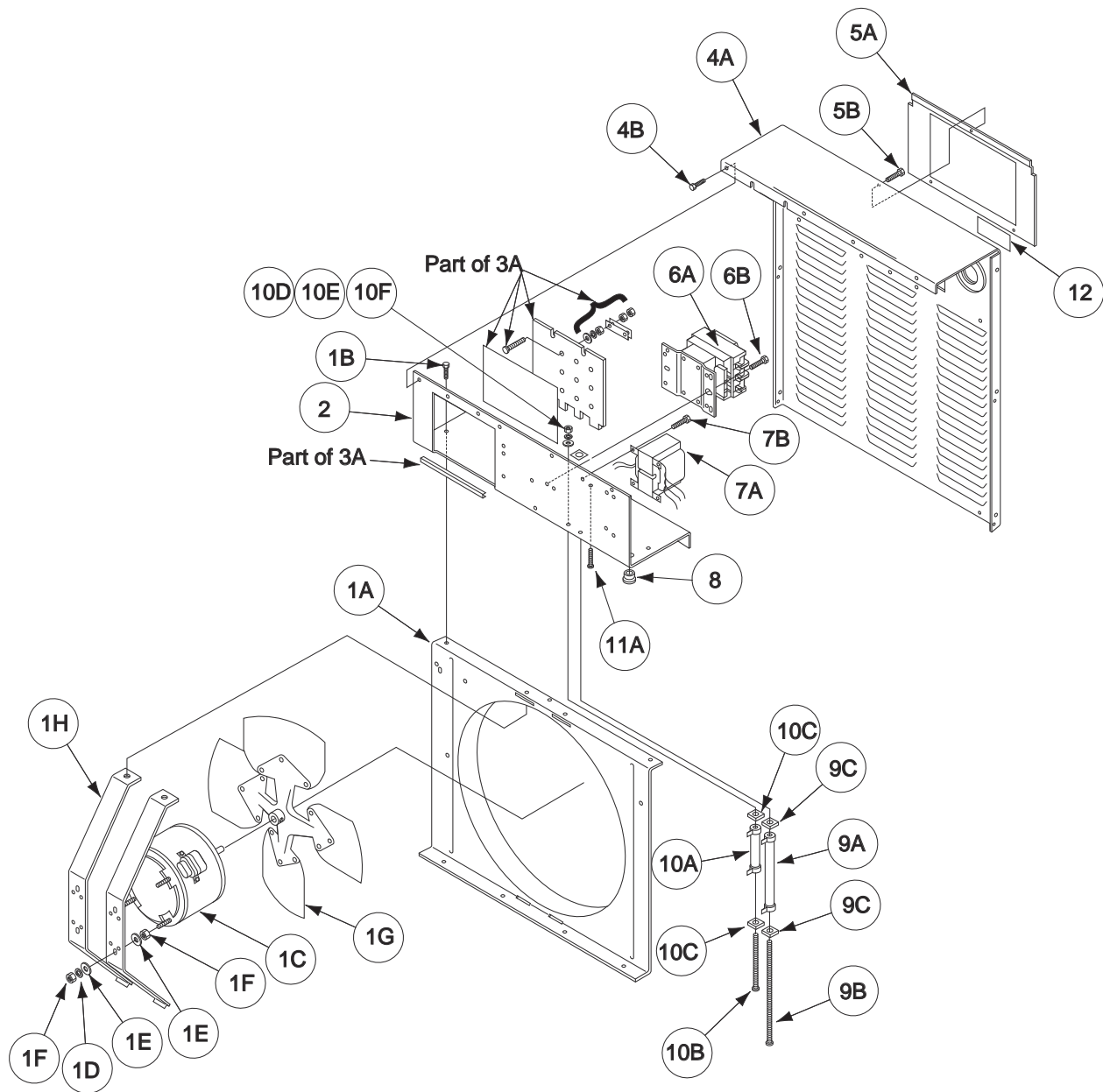
Index of Sub Assemblies

Index of Sub Assemblies

DC-400



# Fan Baffle & Reconnect Panel



# Indicates a change this printing.

Use only the parts marked "x" in the column under the heading number called for in the model index page.

ITEM	DESCRIPTION	PART NO.	QTY.	1	2	3	4	5	6	7	8	9
1	Fan Baffle Asbly, Includes:	M16526-7	1	X								
1A	Fan Baffle	L6247	1	X								
1B	Self Tapping Screw	S8025-91	9	X								
1C	Fan Motor	M9983-6	1	X								
1E	Plain Washer	S9262-27	4	X								
1F	#10-32 HN (or) #8-32 HN	CF000011 or CF000042	4	X								
1G	Fan	M6819-9	1	X								
1H	Fan Motor Mounting Bracket	M16525-2	2	X								
1J	Self Tapping Screw (Not Shown)	S8025-91	2	X								
2	Input Box Assembly	S17978-1	1	X								
3A	Reconnect Panel Asbly, Includes: (220/380/440) (Codes: 9852,10275,11278,11279, 11352, 11353)	L7219-1	1	X								
	Reconnect Panel	M15002-1	1	X								
	Reconnect Panel Link	T14190-1	6	X								
	Reconnect Panel Link	T14190-2	2	X								
	1/4-20 Br HN	CF000300	12	X								
	Heavy HN	T10940-5	12	X								
	Grommet Strip	T12823-13	1	X								
3A	Reconnect Panel Asbly, Includes: (208, 200/400, 200/440, 230/460) (Codes: 9847,9848,9851,9854, 11350, 11351)	L7219-2	1	X								
	Reconnect Panel	M15002-2	1	X								
	Reconnect Panel Link	T14190-1	5	X								
	1/4-20 Br HN	CF000300	9	X								
	Heavy HN	T10940-5	9	X								
	Grommet Strip	T12823-13	1	X								
3A	Reconnect Panel Asbly, Includes: (380/500) (Codes, 9855,10276)	L7219-3	1	X								
	Reconnect Panel	M15002-3	1	X								
	Reconnect Panel Link	T14190-1	3	X								
	1/4-20 BR HN	CF000300	9	X								
	Heavy HN	T10940-5	6	X								
	Grommet Strip	T12823-13	1	X								
3A	Reconnect Panel Asbly, Includes: (415, 575) (Codes 9857 & 11567)	L7219-4	1	X								
	Reconnect Panel	M15002-2	1	X								
	Grommet Strip	T12823-13	1	X								
3A	Reconnect Panel Asbly, Includes: (230/460/575) (Codes: 9849,9850,10859,10880,11083,11084, 11349)	L7219-6	1	X								
	Reconnect Panel	M15002-3	1	X								
	1/4-20 Br HN	CF000300	9	X								
	Heavy HN	T10940-5	3	X								
	Grommet Strip	T12823-13	1	X								
3A	Reconnect Panel Asbly, Inc: (230/400) (10008,11277,11348) (Codes: 10008,11277, 11348)	L7219-6	1	X								
	Reconnect Panel	M15002-3	1	X								
	Reconnect Panel Link	T14190-1	6	X								
	1/4-20 Br HN	CF000300	9	X								
	Heavy HN	T10940-5	3	X								
	Grommet Strip	T12823-13	1	X								
3B	Self Tapping Screw (Not Shown)	S8025-91	2	X								

Index of Sub Assemblies  
 Sub Assembly Illustration  
 Index of Sub Assemblies  
 Sub Assembly Illustration  
 Index of Sub Assemblies  
 Sub Assembly Illustration  
 Index of Sub Assemblies  
 Sub Assembly Illustration

# Indicates a change this printing.

Use only the parts marked "x" in the column under the heading number called for in the model index page.

ITEM	DESCRIPTION	PART NO.	QTY.	1	2	3	4	5	6	7	8	9
4A	Rear Panel (Codes 9847,9848,9849,9850,9851,10859,11350,11351)	S16816-6	1	X								
4A	Rear Panel (Codes 9854,9857,10880,11083,11084,11349)	S16816-14	1	X								
4A	Rear Panel (Codes 9852,9855,10008,10275,10276)	S16816-13	1	X								
4A	Rear Panel (Codes 11277,11278,11279,11348,11352,11353,11567)	S16816-16	1	X								
4B	Self Tapping Screw	S8025-91	12	X								
4C	220V Receptacle (Not Shown) (11276,11278,11279,11348,11352,11353)	S19655-1	1	X								
4C	220V Receptacle (Not Shown) (Codes 9852,10008)	S19655	1	X								
4D	3.5 Amp Circuit Breaker (Not Shown)	T12287-39	1	X								
4D	2.0 Amp Circuit Breaker (Not Shown)	T12287-25	1	X								
4E	230V 3.5 Amp Decal (Not Shown)	S26276	1	X								
4E	220V 2.0 Amp Decal (Not Shown)	T13086-95	1	X								
5A	Input Access Door	M13998-2	1	X								
5B	Self Tapping Screw	S8025-91	3	X								
6A	Contactor	M12161-80	1	X								
6B	Self Tapping Screw	S8025-91	3	X								
7A	Control Transformer (Codes 9847,9851,11350,11351)	M12390-31	1	X								
7A	Control Transformer (Codes 9848, 9854, 9857)	M12390-33	1	X								
7A	Control Transformer (Code 9849)	M12390-51	1	X								
7A	Control Transf (9850,10859,10880 11083,11084,11349)	M12390-67	1	X								
7A	Control Transformer (Codes 9852,11278,11279,11352,11353)	M13471-2	1	X								
7A	Control Transformer (Code 9855,10275,10276)	M12390-34	1	X								
7A	Control Transformer (Code 10008 & 11277, 11348, & 11567)	M12390-71	1	X								
7B	Self Tapping Screw	S8025-91	3	X								
8	Bushing	T12380-2	1	X								
9A	Resistor (R2)	S10404-95	1	X								
9B	#10-24 x 7.50 RHS	CF000191	1	X								
9C	Insulating Washer	T4479-A	2	X								
9D	Lock Washer (Not Shown)	E106A-1	1	X								
9E	Plain Washer (Not Shown)	S9262-27	1	X								
9F	#10-24 HN (Not Shown)	CF000010	1	X								
10A	Resistor (R3)	S10404-94	1	X								
10B	#10-24 x 5.00 RHS	CF000045	1	X								
10C	Insulating Washer	T4479-A	2	X								
10D	Lock Washer	E106A-1	1	X								
10E	Plain Washer	S9262-27	1	X								
10F	#10-24 HN	CF000010	1	X								
11A	Thread Forming Screw	S9225-36	2	X								
11B	Lock Washer (Not Shown)	T9695-1	2	X								
11C	#10-24 HN (Not Shown)	CF000010	2	X								
12	Ground Decal	T13259	1	X								

#

Index of Sub Assemblies  
 Sub Assembly Illustration  
 Index of Sub Assemblies  
 Sub Assembly Illustration  
 Index of Sub Assemblies  
 Sub Assembly Illustration  
 Index of Sub Assemblies  
 Sub Assembly Illustration

# NOTES

---

Index of Sub Assemblies

Index of Sub Assemblies

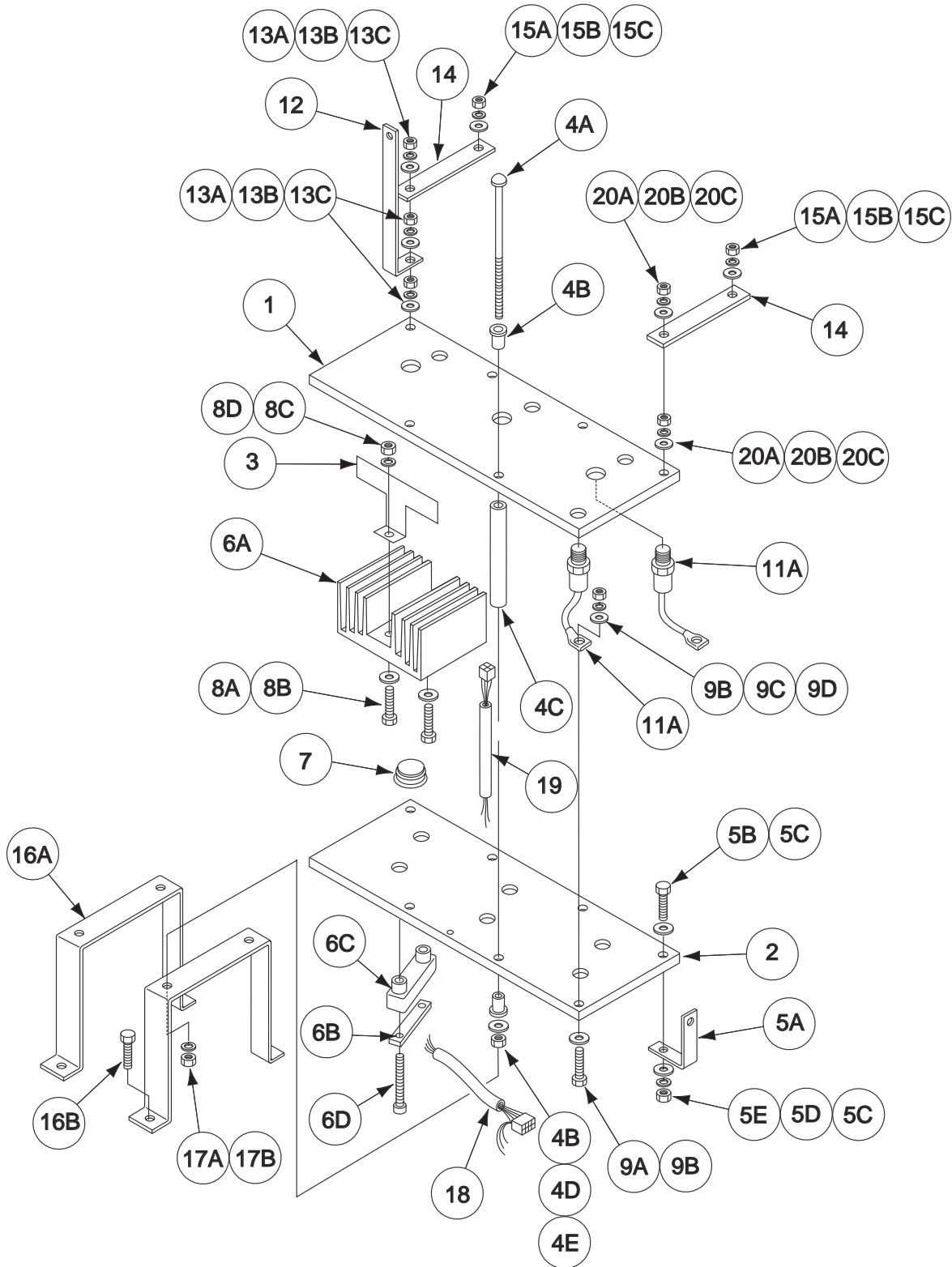
Index of Sub Assemblies

Index of Sub Assemblies

DC-400



# Rectifier Bridge Assembly



Index of Sub Assemblies

Part Numbers

Index of Sub Assemblies

Part Numbers

Index of Sub Assemblies

Part Numbers

Index of Sub Assemblies

Part Numbers



# Indicates a change this printing.

Use only the parts marked "x" in the column under the heading number called for in the model index page.

ITEM	DESCRIPTION	PART NO.	QTY.	1	2	3	4	5	6	7	8	9
1	3 Phase Rectifier Bridge Asbly, Includes: Heat Sink (D.C. Negative)	L7520 L7519	1 1	X X	X X							
2	Heat Sink (D.C. Positive)	L7518	1	X	X							
3	Baffle	S18366	3	X	X							
4A	1/4-20 x 7.00 HHCS	CF000409	4	X	X							
4B	Insulating Bushing	S16860	8	X	X							
4C	Insulating Tube	T7028-141	4	X	X							
4D	Plain Washer	S9262-98	8	X	X							
4E	1/4-20 HN	CF000017	4	X	X							
4F	Lock Washer (Not Shown)	E106A-2	4	X	X							#
5A	Shunt Strap	S11109-6	1	X	X							
5B	5/16-18 x 1.25 HHCS	CF000028	1	X	X							
5C	Plain Washer	S9262-30	2	X	X							
5D	Lock Washer	E106A-14	1	X	X							
5E	5/16-18 HN	CF000029	1	X	X							
6A	Heat Sink	M12314-7	3	X	X							
6B	SCR Spring	S14724-A	3	X	X							
6C	SCR Clamp	S14724-B	3	X	X							
6D	Socket Head Cap Screw	T9447-35	6	X	X							
6E	1/4-28 HN (Not Shown)	CF000198	6	X	X							
7	SCR	M12283-12	3	X	X							
8A	5/16-18 x 1.50 HHCS	CF000081	3	X	X							
8B	Plain Washer	S9262-30	3	X	X							
8C	Lock Washer	E106A-14	3	X	X							
8D	5/16-18 HN	CF000029	3	X	X							
9A	5/16-18 x 1.25 HHCS	CF000028	1	X	X							
9B	Plain Washer	S9262-30	2	X	X							
9C	Lock Washer	E106A-14	1	X	X							
9D	5/16-18 HN	CF000029	1	X	X							
11A	Rectifier Diode	M9661-42	4	X	X							
11B	Plain Washer (Not Shown)	S9262-30	3	X	X							
11C	Springer Washer (Not Shown)	T12735	4	X	X							
11D	5/16-18 x 1.50 HHCS (Not Shown)	CF000081	3	X	X							
12	Lead (Bridge Negative to Mode Switch)	S16954-10	1	X	X							
13A	Plain washer	S9262-30	3	X	X							
13B	Lock Washer	E106A-14	3	X	X							
13C	5/16-18 HN	CF000029	3	X	X							
14	Brace	T8477-35	2	X	X							
15A	Plain Washer	S9262-120	2	X	X							
15B	Lock Washer	E106A-4	2	X	X							
15C	3/8-16 HN	CF000315	2	X	X							
16A	Bridge Mounting Bracket	M16063	2	X	•							
16A	Bridge Mounting Bracket	M20175	2	•	X							
16B	Self Tapping Screw	S8025-91	4	X	•							
16B	Self Tapping Screw	S8025-91	2	•	X							
16C	5/16-18 x .875 HHCS (Not Shown)	T8833-47	2	•	X							
16D	Plain Washer (Not Shown)	S9262-30	2	•	X							
16E	Lock Washer (Not Shown)	E106A-14	2	•	X							
16F	5/16-18 HN (Not Shown)	CF000029	2	•	X							

Index of Sub Assemblies  
 Sub Assembly Illustration  
 Index of Sub Assemblies  
 Sub Assembly Illustration  
 Index of Sub Assemblies  
 Sub Assembly Illustration  
 Index of Sub Assemblies  
 Sub Assembly Illustration

# Indicates a change this printing.

Use only the parts marked "x" in the column under the heading number called for in the model index page.

ITEM	DESCRIPTION	PART NO.	QTY.	1	2	3	4	5	6	7	8	9
17A	Lock Washer	E106A-2	4	X	X							
17B	1/4-20 HN	CF000017	4	X	X							
18	Snubber Harness	S18250-24	1	X	X							
19	SCR Gate Harness	S18250-23	1	X	X							
20A	Plain Washer	S9262-30	2	X	X							
20B	Lock Washer	E106A-14	2	X	X							
20C	5/16-18 HN	CF000029	2	X	X							

Index of Sub Assemblies  
 Sub Assembly Illustration  
 Index of Sub Assemblies  
 Sub Assembly Illustration  
 Index of Sub Assemblies  
 Sub Assembly Illustration  
 Index of Sub Assemblies  
 Sub Assembly Illustration

# NOTES

---

Index of Sub Assemblies

Index of Sub Assemblies

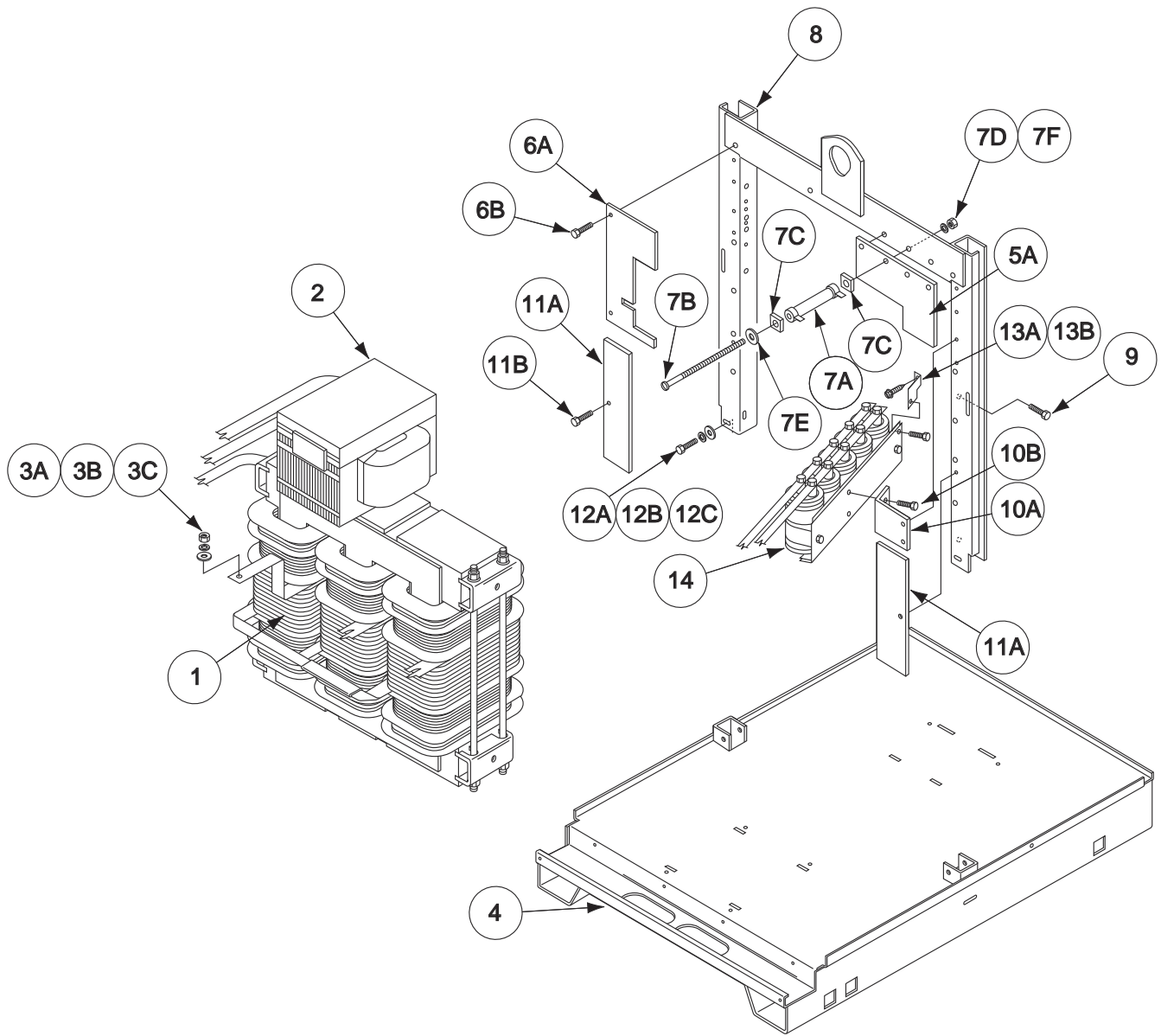
Index of Sub Assemblies

Index of Sub Assemblies

DC-400



# Transformer & Lift Bale Assembly



Index of Sub Assemblies

Part Numbers

Index of Sub Assemblies

Part Numbers

Index of Sub Assemblies

Part Numbers

Index of Sub Assemblies

Part Numbers

# Indicates a change this printing.

Use only the parts marked "x" in the column under the heading number called for in the model index page.

ITEM	DESCRIPTION	PART NO.	QTY.	1	2	3	4	5	6	7	8	9
1	Transformer Assembly	See P-234-H										
2	Choke Coil Assembly	L7524	1	X								
3A	Plain Washer	S9262-30	1	X								
3B	Lock Washer	E106A-14	1	X								
3C	5/16-18 HN	CF000029	1	X								
4	Base Welded Assembly	L6494-1	1	X								
5A	Capacitor Baffle	S17358	1	X								
5B	Thread Forming Screw (Not Shown)	S9225-8	1	X								
6A	Choke Baffle	S17357	1	X								
6B	Thread Forming Screw	S9225-8	2	X								
7A	Resistor (R1)	S10404-96	1	X								
7B	#10-24 x 7.50 RHS	CF000191	1	X								
7C	Insulating Washer	T4479-A	2	X								
7D	Lock Washer	E106A-1	1	X								
7E	Plain Washer	S9262-27	1	X								
7F	#10-24 HN	CF000010	1	X								
8	Lift Bale Assembly	L6485	1	X								
9	Thread Forming Screw	S9225-28	4	X								
10A	Capacitor Mounting Bracket	S17355	1	X								
10B	Thread Forming Screw	S9225-8	1	X								
11A	Insulation (Baffle)	T11472-24	2	X								
11B	Thread Forming Screw	S9225-8	2	X								
12A	3/8-16 x .75 HHCS	CF000034	4	X								
12B	Lock Washer	E106A-16	4	X								
12C	Plain Washer	S9262-120	4	X								
13A	Capacitor Brace	S17356	1	X								
13B	Self Tapping Screw	S8025-91	2	X								
14	Capacitor Bank Assembly	M14495-1	1	X								
15	Power Harness (Not Shown)	A479	1	X								

Index of Sub Assemblies  
 Sub Assembly Illustration  
 Index of Sub Assemblies  
 Sub Assembly Illustration  
 Index of Sub Assemblies  
 Sub Assembly Illustration  
 Index of Sub Assemblies  
 Sub Assembly Illustration

# Control Box Cover Assembly

Index of Sub Assemblies

Part Numbers

Index of Sub Assemblies

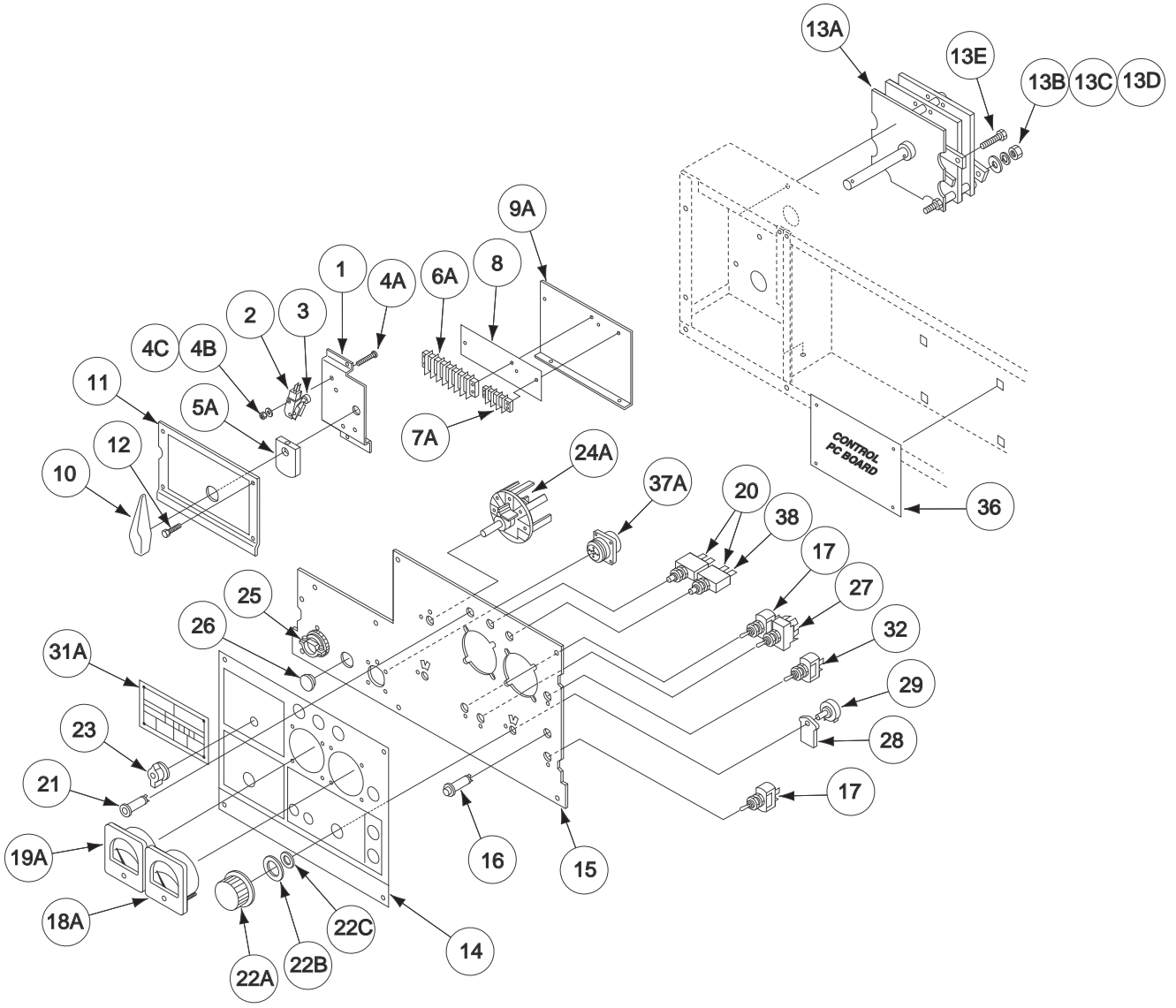
Part Numbers

Index of Sub Assemblies

Part Numbers

Index of Sub Assemblies

Part Numbers



# Indicates a change this printing.

Use only the parts marked "x" in the column under the heading number called for in the model index page.

ITEM	DESCRIPTION	PART NO.	QTY.	1	2	3	4	5	6	7	8	9
1	Micro Switch Bracket	M15399	1	X	X	X	X	X	X			
2	Micro Switch	T12485-3	2	X	X	X	X	X	X			
3	Switch Actuator	T14797-1	2	X	X	X	X	X	X			
4A	#3-48 x .875 RHS	CF000138	4	X	X	X	X	X	X			
4B	Lock Washer	E106A-17	4	X	X	X	X	X	X			
4C	#3-48 HN	CF000139	4	X	X	X	X	X	X			
5A	Cam	T14799	1	X	X	X	X	X	X			
5B	Set Screw (Not Shown)	S11604-9	1	X	X	X	X	X	X			
6A	Terminal Strip	S8542-7	1	X	X	X	X	X	X			
6B	Self Tapping Screw (Not Shown)	S8025-15	2	X	X	X	X	X	X			
7A	Terminal Strip	S14530-12	1	X	X	X	X	X	X			
7B	Self Tapping Screw (Not Shown)	S8025-62	1	X	X	X	X	X	X			
8	Number Plate	S18378-1	1	X	X	X	X	X	X			
9A	Terminal Strip Bracket	S17046	1	X	X	X	X	X	X			
9B	Self Tapping Screw (Not Shown)	S8025-91	2	X	X	X	X	X	X			
9C	Lock Washer (Not Shown)	T9695-1	2	X	X	X	X	X	X			
10	Mode Switch Handle	S16664-7	1	X	X	X	X	X	X			
11	Mode Switch Cover	S20737	1	X	X	X	X	X	X			
11A	Mode Switch Nameplate (Not Shown)	M17001	1	•	X	X	X	X	X			
12	Self Tapping Screw (Not Shown)	S8025-91	4	X	X	X	X	X	X			
13A	Mode Switch	L3545-21	1	X	X	X	X	X	X			
13B	Plain Washer	S9262-98	3	X	X	X	X	X	X			
13C	Lock Washer	T9860-6	3	X	X	X	X	X	X			
13D	1/4-20 HN	CF000017	3	X	X	X	X	X	X			
13E	5/16-18 x 1.00 HHCS	CF000062	3	X	X	X	X	X	X			
14	Nameplate	L9024	1	X	•	•	X	•	•			
14	Nameplate	L9024-1	1	•	•	•	•	•	X			
14	Nameplate	M20045	1	•	X	X	•	X	•			
15	Control Box Cover	M17017	1	X	X	X	•	•	•			
15	Control Box Cover	M17017-1	1	•	•	•	X	X	X			
16	Pilot Light	T13486-4	1	X	X	X	X	X	X			
17	Switch (S1, S3)	T10800-4	2	X	X	X	X	X	X			
18A	D.C. Voltmeter	M10486-3	1	X	X	X	•	•	•			
18A	D.C. Voltmeter	M21002-1	1	•	•	•	X	X	X			
18B	Plain Washer (Not Shown)	S9262-39	4	X	X	X	X	X	X			
19A	D.C. Ammeter	M10485-8	1	X	X	X	•	•	•			
19A	D.C. Ammeter	M21003-1	1	•	•	•	X	X	X			
19B	Plain Washer (Not Shown)	S9262-39	4	X	X	X	X	X	X			
20	Circuit Breaker (10 Amps)	T12287-20	2	X	•	•	X	•	X			
20	Circuit Breaker (10 Amps)	T12287-20	1	•	X	X	•	X	•			
21	Thermal Protection Light	T13534-11	1	X	X	X	X	X	X			
22A	Knob	T10491-1	2	X	X	X	X	X	X			
22B	Felt Washer	T14034	2	X	X	X	X	X	X			
22C	Insulation Tube	T7028-241	2	X	X	X	X	X	X			
23	Knob	M15796	1	X	X	X	X	X	X			
24A	Arc Control Switch (S5)	M15750-1	1	X	X	X	X	X	X			
24B	Self Tapping Screw (Not Shown)	S8025-77	1	X	X	X	X	X	X			
25	Box Connector	T9639-1	1	X	X	X	X	X	X			
26	Plug Button	T13597-1	1	X	X	X	x	X	X			
27	Switch (S2)	T10800-39	1	X	X	X	X	X	X			
28	Potentiometer Spacer	S18280	2	X	X	X	X	X	X			

Index of Sub Assemblies  
 Sub Assembly Illustration  
 Index of Sub Assemblies  
 Sub Assembly Illustration  
 Index of Sub Assemblies  
 Sub Assembly Illustration  
 Index of Sub Assemblies  
 Sub Assembly Illustration

# Indicates a change this printing.

Use only the parts marked "x" in the column under the heading number called for in the model index page.

ITEM	DESCRIPTION	PART NO.	QTY.	1	2	3	4	5	6	7	8	9
29	Potentiometer (R4, R5)	T10812-122	1	X	X	X	X	X	X			
30	Control Harness (Not Shown)	L9103	1	X	X	X	X	X	X			
31A	Rating Plate (Domestic)	S21154	1	X	•	•	•	•	•			#
31A	Rating Plate (Export)	S21154-1	1	X	•	•	•	•	•			#
31A	Rating Plate (Europe)	S21154-2	1	X	•	•	•	•	•			#
31A	Rating Plate (Domestic)	S21154-3	1	•	X	•	•	•	•			#
31A	Rating Plate (Canadian)	S21154-4	1	•	•	X	•	•	•			#
31A	Rating Plate (Codes 11350 & 11351)	S21154-5	1	•	•	•	X	•	•			#
31A	Rating Plate (Codes 11352 & 11353)	S21164-6	1	•	•	•	X	•	•			#
31A	Rating Plate (Code 11567)	S21154-7	1	•	•	•	•	•	X			#
31A	Rating Plate (Code 11349)	S21154-8	1	•	•	•	•	X	•			#
31A	Rating Plate (Code 11348)	S21154-9	1	•	•	•	X	•	•			#
31B	Fastener Button (Not Shown)	T14659-2	4	X	X	X	X	X	X			
32	Voltmeter Switch (S6) (Europe)	T13562-1	1	X	X	X	X	X	X			
33	Self Tapping Screw (Not Shown)	S8025-91	7	X	X	X	X	X	X			
34	Circuit Breaker (Depending on Code)(Not Shown)	T12287-22	1	X	X	X	X	X	•			
35A	Receptacle & Lead Assembly (Not Shown)	S19655-1	1	X	X	X	X	X	X			
35B	Self Tapping Screw (Not Shown)	S8025-62	2	X	X	X	X	X	X			
35C	Plain Washer (Not Shown)	S9262-3	2	X	X	X	X	X	X			
36	Control P.C. Board	G2588-[ ]	1	X	X	X	X	X	X			
36A	Expansion Nut (Not Shown)	S14020-3	6	X	X	X	X	X	X			
36B	Self Tapping Screw (Not Shown)	S8025-97	6	X	X	X	X	X	X			
37	Connector & Lead Asbly, Includes: (Export & Domestic)	S13100-144	1	X	X	X	X	X	X			
37	Connector & Lead Asbly, Includes: (Europe)	S13100-145	1	X	X	X	X	X	•			
37A	Connector (14 Socket)	S12021-70	1	X	X	X	X	X	X			
37B	Self Tapping Screw (Not Shown)	S8025-73	4	X	X	X	X	X	X			
38	Circuit Breaker (15 Amps)	T12287-34	1	•	X	•	•	X	•			
38	Circuit Breaker (15 Amps)	T12287-37	1	•	•	X	•	•	•			
40	"C" Tick Decal (Not Shown)	T13086-169	1	•	•	•	•	•	X			

Index of Sub Assemblies  
 Sub Assembly Illustration  
 Index of Sub Assemblies  
 Sub Assembly Illustration  
 Index of Sub Assemblies  
 Sub Assembly Illustration  
 Index of Sub Assemblies  
 Sub Assembly Illustration



# NOTES

---

Index of Sub Assemblies

Index of Sub Assemblies

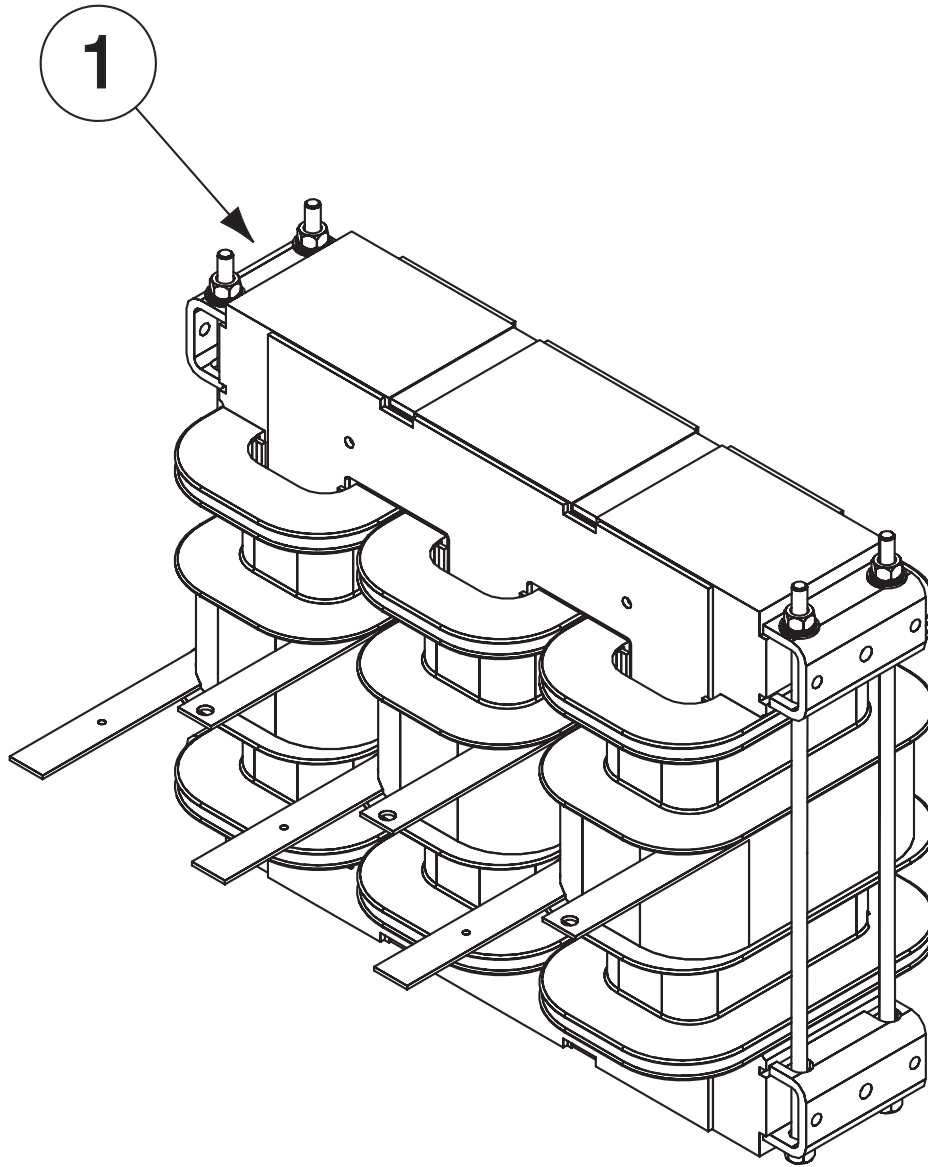
Index of Sub Assemblies

Index of Sub Assemblies

DC-400



# Coil Assemblies



Index of Sub Assemblies

Part Numbers

Index of Sub Assemblies

Part Numbers

Index of Sub Assemblies

Part Numbers

Index of Sub Assemblies

Part Numbers

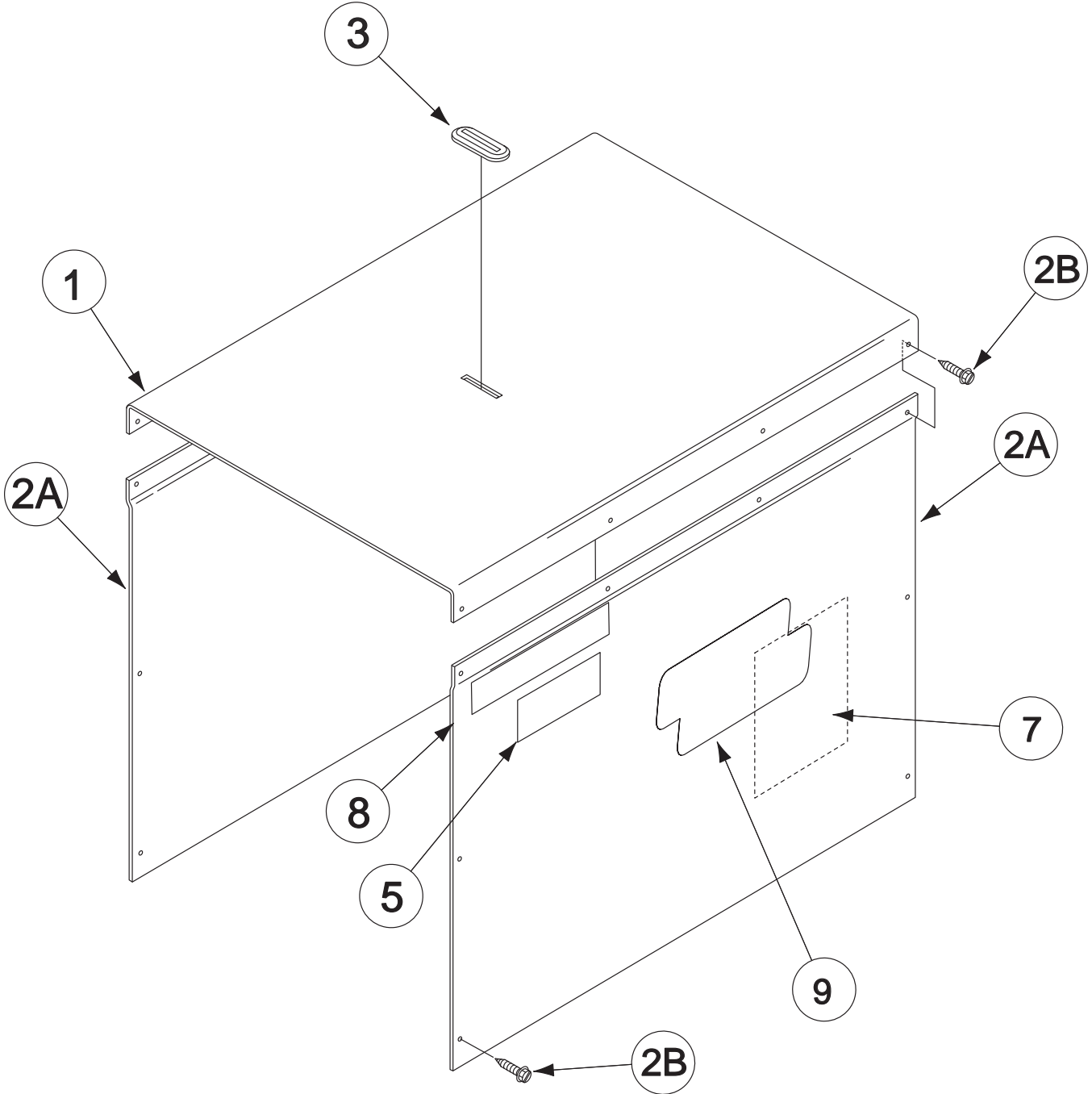
# Indicates a change this printing.

Use only the parts marked "x" in the column under the heading number called for in the model index page.

ITEM	DESCRIPTION	PART NO.	QTY.	1	2	3	4	5	6	7	8	9
1	Transformer Asbly (Codes 9847, 11350 & 11351)	G2589-1/9847	1	X								
1	Transformer Asbly (Code 9848)	G2589-1/9848	1	X								
1	Transformer Asbly (Code 9849)	G2589-7/9849	1	X								
1	Transformer Asbly (Code 9850)	G2589-2/9850	1	X								
1	Transformer Asbly (Code 9851)	G2589-4/9851	1	X								
1	Transformer Asbly (Code 9852)	G2589-3/9852	1	X								
1	Transformer Asbly (Code 9854)	G2589-4/9854	1	X								
1	Transformer Asbly (Code 9855)	G2589-5/9855	1	X								
1	Transformer Asbly (Codes 9857 & 11567)	G2589-6/9857	1	X								
1	Transformer Asbly (Codes 10008, 11277 & 11348)	G2589-3/0008	1	X								
1	Transformer Asbly (Code 10859, 10880, 11083, 11084 & 11349)	G2589-8/10699	1	X								
1	Transformer Asbly (Codes 11278, 11279, 11352 & 11353)	G2589-3/9852	1	X								
8	Secondary Thermostat (Not Shown)	T13359-2	1	X								
9	Primary Thermostat (Not Shown)	T14542-1	1	X								

Index of Sub Assemblies  
 Sub Assembly Illustration  
 Index of Sub Assemblies  
 Sub Assembly Illustration  
 Index of Sub Assemblies  
 Sub Assembly Illustration  
 Index of Sub Assemblies  
 Sub Assembly Illustration

# Roof & Sides



Index of Sub Assemblies

Part Numbers

Index of Sub Assemblies

Part Numbers

Index of Sub Assemblies

Part Numbers

Index of Sub Assemblies

Part Numbers

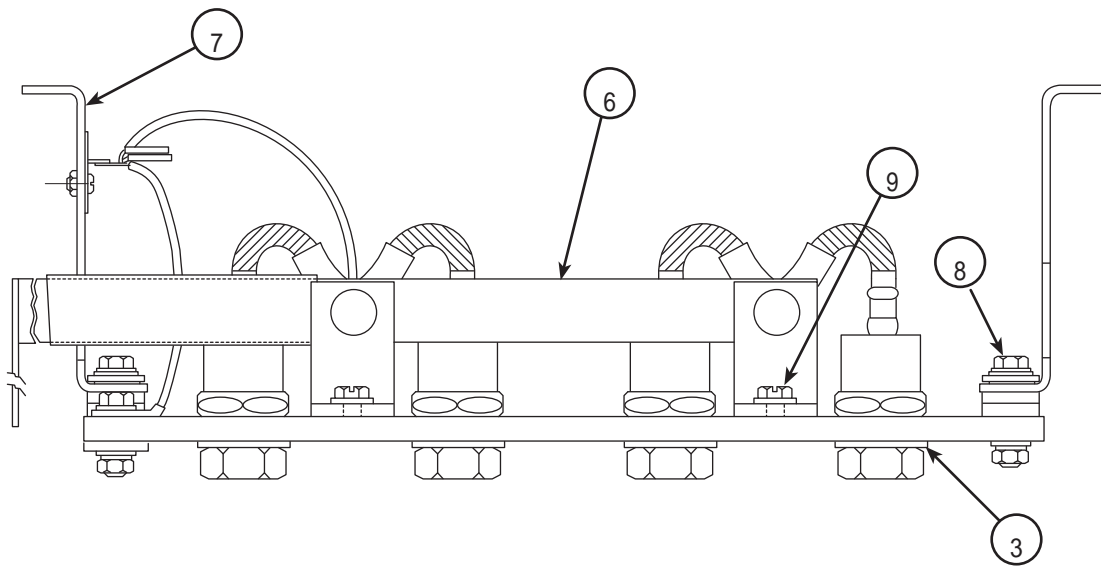
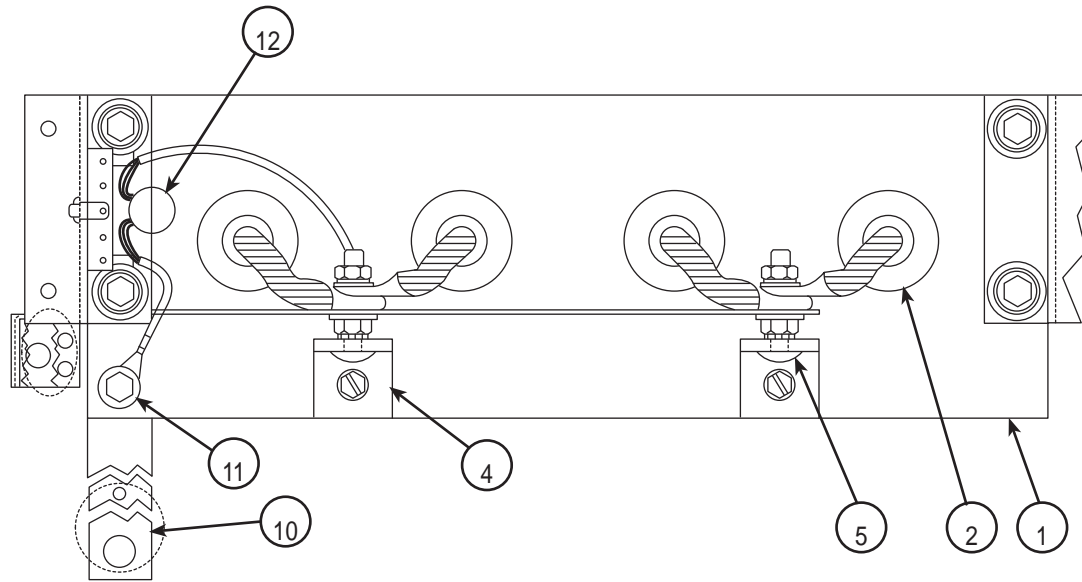
# Indicates a change this printing.

Use only the parts marked "x" in the column under the heading number called for in the model index page.

ITEM	DESCRIPTION	PART NO.	QTY.	1	2	3	4	5	6	7	8	9
1	Roof	M12352-14	1	X	•							
1	Roof	L6373-5	1	•	X							
2A	Side Panel	M14065-7	2	X	X							
2B	Self Tapping Screw	S8025-91	18	X	X							
3	Cover Seal	S12934	1	X	X							
5	Warning Decal (Domestic, Export)	M16196	1	X	X							
5	Warning Decal (Europe, Australia)	L8064-1	1	X	X							
6	Caution Decal (Back Side of Panel) (Not Shown)	S13504	1	X	X							
7	Wiring Diagram	L9106	1	X	X							#
	Wiring Diagram (230/460/575 Only)	L9107	1	X	X							#
	Wiring Diagram (Codes 10859,10880,11083,11084,11349)	L11460	1	X	X							#
	Wiring Diagram (Codes 11277,11278,11279,11348,11352,11353,11567)	L12722	1	X	X							#
8	Decal, Product Name	M21954-2	2	X	X							#
9	Decal, LECO Logo	S27368-3	2	X	X							#

Index of Sub Assemblies  
 Sub Assembly Illustration  
 Index of Sub Assemblies  
 Sub Assembly Illustration  
 Index of Sub Assemblies  
 Sub Assembly Illustration  
 Index of Sub Assemblies  
 Sub Assembly Illustration

# Diode Option



Index of Sub Assemblies

Part Numbers

Index of Sub Assemblies

Part Numbers

Index of Sub Assemblies

Part Numbers

Index of Sub Assemblies

Part Numbers

# Indicates a change this printing.

Use only the parts marked "x" in the column under the heading number called for in the model index page.

ITEM	DESCRIPTION	PART NO.	QTY.	1	2	3	4	5	6	7	8	9
1	Diode Option Assembly, Includes: (1 thru 12)	L9286	1	X								
	Heat Sink	S20943	1	X								
	Rectifier Diode	M9661-36	4	X								
	Spring Washer	T12735	4	X								
	Mounting Angle	S21239	2	X								
5	Carriage Bolt	T11827-50	2	X								
	Lock Washer	T9860-3	2	X								
	Plain washer	S9262-121	4	X								
	Lock Washer	E106A-4	2	X								
	5/16-18 HN	CF000029	4	X								
6	Connection Lead	S20945	1	X								
7	Mounting Bracket	S20946	2	X								
8	1/4-20 x 1.50 HHCS	CF000141	2	X								
	Plain Washer	S9262-98	8	X								
	Insulator	T11267-B	8	X								
	Insulator	T14605	4	X								
	Lock Washer	E106A-2	4	X								
	1/4-20 HN	CF000017	4	X								
9	Lock Washer	T9860-6	2	X								
	Thread Forming Screw	S9225-45	2	X								
10	Flat Aluminum Lead	M13607-13	1	X								
	5/16-18 x 1.00 HHCS	CF000062	1	X								
11	Plain Washer	S9262-121	2	X								
	Lock Washer	E106A-14	1	X								
	5/16-18 HN	CF000029	1	X								
12	Snubber Assembly	T14869	1	X								
	Sems Screw	T10082-4	1	X								
	#10-24 HN	CF000010	1	X								
	Insulation	T11472-21	1	X								

Index of Sub Assemblies  
 Sub Assembly Illustration  
 Index of Sub Assemblies  
 Sub Assembly Illustration  
 Index of Sub Assemblies  
 Sub Assembly Illustration  
 Index of Sub Assemblies  
 Sub Assembly Illustration

# NOTES

---

Index of Sub Assemblies

Index of Sub Assemblies

Index of Sub Assemblies

Index of Sub Assemblies

DC-400

