

PARTS LIST FOR IDEALARC® DC-1500

Index of Sub Assemblies
Illustration of Sub Assemblies
Index of Sub Assemblies
Illustration of Sub Assemblies
Index of Sub Assemblies
Illustration of Sub Assemblies
Index of Sub Assemblies
Illustration of Sub Assemblies

IDEALARC® DC-1500



IDEALARC® DC-1500

For Codes: 7479 to 9625, 11851 & 11852

Do Not use this Parts List for a machine if its code number is not listed. Contact the Service Department for any code numbers not listed.

Use the Illustration of Sub-Assemblies page and the table below to determine which sub assembly page and column the desired part is located on for your particular code machine.

Sub Assembly Item No.									
SUB ASSEMBLY PAGE NAME	Winding Specifications and Diagrams	Front Panel Assembly	Transformer Assembly & Internal Parts (Right Side)	Internal Parts (Left Side)	Auxiliary Power Panel Assembly	Rectifier Assembly	NL Option (K783)	Remote Control	
PAGE NO.	P-118-B	P-118-C	P-118-D	P-118-E	P-118-F	P-118-G	P-118-H	P-84-J	
CODE NO.									
7479		1	1	1	•	1	•	1	
7562		1	2	1	•	1	•	1	
7562-NL		2	2	1	1	1	•	1	
7636		2	2	1	•	1	•	1	
7636-NL		2	2	1	1	1	•	1	
7676-NL		2	2	1	1	1	•	1	
7687		2	2	1	•	1	•	1	
7748		•	•	•	•	•	1	•	
7778		2	2	1	•	1	•	1	
7778		2	2	1	•	1	•	1	
7816		3	2	2	•	1	•	1	
7828		3	2	2	•	1	•	1	
7885		3	2	2	•	1	•	1	
8146		3	2	3	•	1	•	1	
8147		3	2	3	•	1	•	1	
8151		3	2	3	•	1	•	1	
8237		3	2	3	•	1	•	1	
8238		3	2	3	•	1	•	1	
8239		3	2	3	•	1	•	1	
8294		3	2	3	•	1	•	1	
8302		3	2	3	•	1	•	1	
8387		3	2	3	•	1	•	1	
8501		3	3	4	•	1	•	1	
8502		3	3	4	•	1	•	1	
8512		3	3	4	•	1	•	1	
8530		3	3	4	•	1	•	1	
8623		3	3	4	•	1	•	1	
8648		3	3	4	•	1	•	1	
8649		3	3	4	•	1	•	1	

Illustration of Sub Assemblies

IDEALARC® DC-1500

For Codes: 7479 to 9625, 11851 & 11852

Do Not use this Parts List for a machine if its code number is not listed. Contact the Service Department for any code numbers not listed.

Use the Illustration of Sub-Assemblies page and the table below to determine which sub assembly page and column the desired part is located on for your particular code machine.

Sub Assembly Item No. ↔									
SUB ASSEMBLY PAGE NAME ↔	Winding Specifications and Diagrams	Front Panel Assembly	Transformer Assembly & Internal Parts (Right Side)	Internal Parts (Left Side)	Auxiliary Power Panel Assembly	Rectifier Assembly	NL Option (K783)	Remote Control	
PAGE NO. →	P-118-B	P-118-C	P-118-D	P-118-E	P118-F	P-118-G	P-118-H	P-84-J	
CODE NO. ↓									
8661		3	3	4	•	1	•	1	
9624		3	3	4	•	1	•	1	
9625		3	3	4	•	1	•	1	
11851		4	4	4	•	1	•	1	
11852		4	4	4	•	1	•	1	

Illustration of Sub Assemblies

WINDING SPECIFICATIONS AND DIAGRAMS

(Part Numbers are Shown for Reference, and Are Not Sold Separately)

Only those suffixes requiring distinction from the basic codes are shown

CODE NO.	VOLTAGE	PRIMARY COILS		SECONDARY COILS	INTERPHASE COIL	AUX. TRANS. COIL	WIRING DIAGRAM
		INNER	OUTER				
7479	460/3/60 & 380/440/3/50	M12763-1	M12763-2	M12572-95	M12572-96	M12749-4/7479-6	L5389
7562	460/3/60 & 380/440/3/50	M12763-1	M12763-2	M12572-95	M12572-96	M12749-4/7479-6	L5498
7562-NL	460/3/60 & 380/440/3/50	M12763-1	M12763-2	M12572-95	M12572-96	M12749-5/7479-7	L5440
7636	460/3/60 & 380/440/3/50	M12763-1	M12763-2	M12572-95	M12572-96	M12749-4/7479-6	L5498
7636-NL	460/3/60 & 380/440/3/50	M12763-1	M12763-2	M12572-95	M12572-96	M12749-5/7479-7	L5650
7676-NL	380/3/50	M12763-1	M12763-2	M12572-95	M12572-96	M12749-5/7479-7	L5650
7687	460/3/60 & 380/440/3/50	M12763-1	M12763-2	M12572-95	M12572-96	M12749-4/7479-6	L5715
7748	L5722
7778	575/3/60 & 550/3/50	M12763-3	M12763-4	M12572-95	M12572-96	M12749-7/7778-6	L5722
7816	460/3/60 & 380/440/3/50	M12763-1	M12763-2	M12572-95	M12572-96	M12749-4/7479-6	L5810
7828	575/3/60 & 550/3/50	M12763-3	M12763-4	M12572-95	M12572-96	M12749-7/7778-6	L5810
7885	415/3/50	M12763-1	M12763-5	M12572-95	M12572-96	M12749-8/7885-6	L5810
8146	460/3/60 & 380/440/3/50	M12763-1	M12763-2	M12572-95	M12572-96	M12749-4/7479-6	L6166
8147	575/3/60 & 550/3/50	M12763-3	M12763-4	M12572-95	M12572-96	M12749-7/7778-6	L6166
8151	415/3/50	M12763-1	M12763-5	M12572-95	M12572-96	M12749-8/7885-6	L6166
8237	460/3/60 & 380/440/3/50	M12763-1	M12763-2	M12572-95	M12572-96	M12749-4/7479-6	L6262
8238	575/3/60 & 550/3/50	M12763-3	M12763-4	M12572-95	M12572-96	M12749-7/7778-6	L6262
8239	415/3/50	M12763-1	M12763-5	M12572-95	M12572-96	M12749-8/7885-6	L6262
8294	460/3/60 & 380/440/3/50	M12763-1	M12763-2	M12572-95	M12572-96	M12749-4/7479-6	L6357
8302	500/3/50	M12763-3	M12763-2	M12572-95	M12572-96	M12749-7/8302-6	L6357
8387	415/3/50	M12763-1	M12763-5	M12572-95	M12572-96	M12749-8/7885-6	L6357
8501	460/3/60 & 380/440/3/50	M12763-1	M12763-2	M12572-95	M12572-96	M12749-9/8501-6	L6427
8502	415/3/50	M12763-1	M12763-5	M12572-95	M12572-96	M12749-11/8502-6	L6427
8512	460/3/60 & 380/440/3/50	M12763-1	M12763-2	M12572-95	M12572-96	M12749-9/8501-6	L6427
8530	575/3/60 & 550/3/50	M12763-3	M12763-4	M12572-95	M12572-96	M12749-10/8530-6	L6427
8623	415/3/60	M12763-1	M12763-5	M12572-95	M12572-96	M12749-11/8502-6	L6427
8648	380/440/3/50	M12763-1	M12763-2	M12572-95	M12572-96	M12749-9/8501-6	L6427
8649	575/3/60	M12763-3	M12763-4	M12572-95	M12572-96	M12749-10/8530-6	L6427
8661	500/1/50	M12763-3	M12763-2	M12572-95	M12572-96	M12749-10/8661-6	L6427
9624	380/440V (Europe)	M12763-1	M12763-2	M12572-95	M12572-96	M12749-11/8502-6	L6427 #
9625	415V (Europe)	M12763-1	M12763-5	M12572-95	M12572-96	M12749-11/8502-6	L6427
11851	460/3/60	M12763-1	M12763-2	M12572-95	M12572-96	M12749-9/8501-6	L6427-1
11852	380/440/3/50	M12763-1	M12763-2	M12572-95	M12572-96	M12749-11/8502-6	L6427-1 #



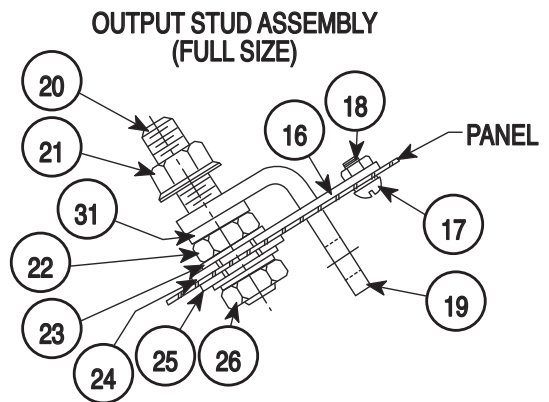
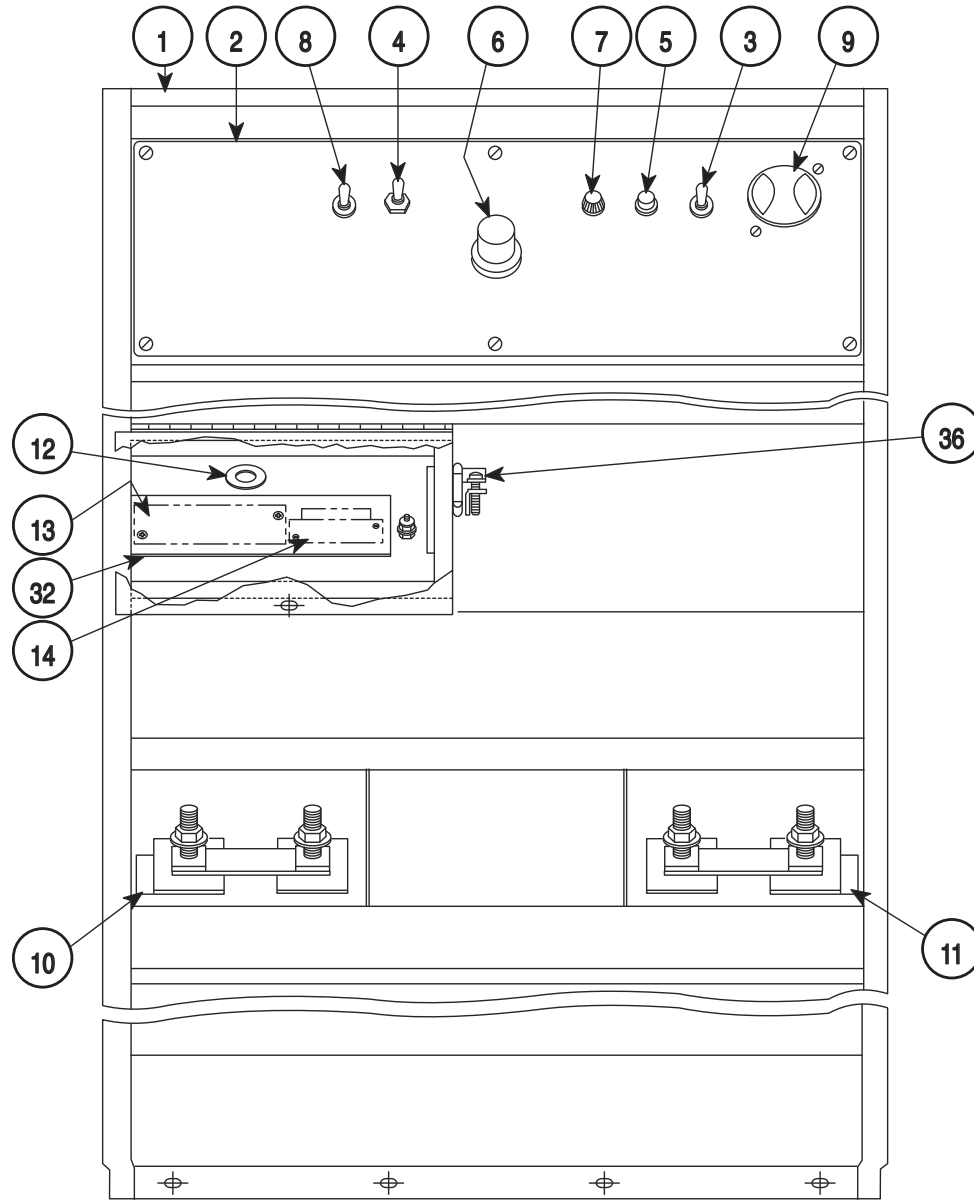
Index of Sub Assemblies

NOTES

IDEALARC® DC-1500



Front Panel Assembly



Index of Sub Assemblies
 Index of Sub Assemblies
 Index of Sub Assemblies
 Index of Sub Assemblies

Part Numbers
 Part Numbers
 Part Numbers
 Part Numbers

Indicates a change this printing.

Use only the parts marked "x" in the column under the heading number called for in the model index page.

ITEM	DESCRIPTION	PART NO.	QTY.	1	2	3	4	5	6	7	8	9
1	Front Panel	L5346-1 ø	1	X	•	•	•					
1	Front Panel (Below Code 8250)	L5346-3 ø	1	•	X	X	•					
1	Front Panel (Code 8250 thru 8400)	L5346-5 ø	1	•	•	X	•					
1	Front Panel (Above Code 8400)	L6477	1	•	•	X	X					
2	Nameplate	G1357	1	X	•	•	•					
2	Nameplate	L5517	1	•	X	X	•					
2	Nameplate (UL)	L5813	1	•	•	X	•					
2	Nameplate (CE)	L5813-1	1	•	•	X	•					
2	Nameplate	L5813-4	1	•	•	•	X					
3	Polarity Control Switch (Code 7700 to 8151)	T10800-7	1	•	X	X	•					
3	Polarity Control Switch (Below Code 7700 & 8237 thru 9625)	T13562	1	X	X	X	•					
3	Polarity Control Switch (Codes 11851 & 11852)	T13562-1	1	•	•	•	X					
3	Polarity Control Switch (Codes 7562-NL, 7636-NL & 7676-NL Only)	T10800-14	1	X	X	•	•					
4	Current Control Switch	T11160	1	X	X	X	X					
5	Pilot Light	T13486-1	1	X	X	X	•					
5	Pilot Light	T13486-4	1	•	•	•	X					
6	Output Control Potentiometer	T10812-40	1	X	X	X	X					
	Potentiometer Insulation	T12792-1	1	X	X	X	X					
	Knob	T10491	1	X	X	X	X					
7	Fuse Holder	S10433	1	X	X	X	X					
	Fuse	T10728-16	1	X	X	X	X					
8	Voltage Control Switch	T13784	1	X	X	•	•					
8	Voltage Control Switch	T13381-3	1	•	•	X	X					
9	Push Button	M6574-A	1	X	X	X	X					
10	Decal (Negative)	T12893	1	X	X	X	X					
11	Decal (Positive)	T12892	1	X	X	X	X					
12	Grommet	S10255-14	1	X	X	X	X					
13	Terminal Strip	S8542	1	X	X	X	X					
13	Terminal Strip (Codes 7562-NL, 7637-NL & 7676-NL Only)	S8542-2 ø	1	X	X	X	•					
14	Terminal Strip (Below Code 8250)	S13323-5	1	X	X	X	•					
14	Terminal Strip (Above Code 8250)	S14530-11	1	•	•	X	X					
15	Hot Start Dial Plate (Codes 7562-NL, 7636-NL, 7676-NL Only)	S15506	1	X	X	•	•					
16	Stud Insulation	T14373	4	X	X	X	X					
17	Sems Screw	T10082-4	4	X	X	X	X					
18	#10-24 HN	CF000010	4	X	X	X	X					
19	Connection Strip	T8141-4	4	X	X	X	X					
20	Stud	T6931-11	4	X	X	X	X					
21	Flanged Nut	T3960	4	X	X	X	X					
22	1/2-13 HJN	CF000054	8	X	X	X	X					
23	Plain Washer	S9262-1	8	X	X	X	X					
24	Insulating Bushing	T14374	4	X	X	X	X					
25	Insulating Washer	S10773-9	4	X	X	X	X					
26	Lock Washer	E106A-15	4	X	X	X	X					
31	Jumper	M8772-127	2	X	X	X	X					
32	Number Plate (Below Code 8200)	S15400 ø	1	X	X	X	•					
32	Number Plate (Codes 8200 to 8250)	S16747	1	•	•	X	•					
32	Number Plate (Above Code 8250)	S17405	1	•	•	X	X					
32	Number Plate (Codes 7562-NL, 7636-NL & 7676-NL Only)	S15400-1	1	X	X	•	•					
36	Box Connector	T9639-1	1	•	•	X	X					

Index of Sub Assemblies
 Sub Assembly Illustration
 Index of Sub Assemblies
 Sub Assembly Illustration
 Index of Sub Assemblies
 Sub Assembly Illustration
 Index of Sub Assemblies
 Sub Assembly Illustration

Indicates a change this printing.

Use only the parts marked "x" in the column under the heading number called for in the model index page.

ITEM	DESCRIPTION	PART NO.	QTY.	1	2	3	4	5	6	7	8	9
	Parts Not Illustrated:											
	Roof	L6374-1	1	X	X	X	X					
	Upper Case Side	L5347-1	2	X	X	X	X					
	Lower Case Side	L5347-2	2	X	X	X	X					
	Upper Case Back	L5353	1	X	X	X	X					
	Lower Case Back	L5352	1	X	X	X	X					
	Capacitor (C7) (Mounts to inside of Front Panel or Horizontal Baffle	S17201-1	1	X	X	X	X					
	Decal (Ground)	T13260-3	1	X	X	X	•					
	Decal (Ground)	T13260-4	1	•	•	•	X					
	Contact Dropout Delay Switch (Codes 7562-NL, 7636-NL & 7676-NL Only)	T10800-4	1	X	X	•	•					
	Output Control Potentiometer (Codes 7562-NL, 7636-NL & 7676-NL Only)	T10812-40	1	X	X	•	•					
	Potentiometer Insulation	T12792	1	X	X	•	•					
	Knob	T10491	1	X	X	•	•					



Index of Sub Assemblies
 Sub Assembly Illustration
 Index of Sub Assemblies
 Sub Assembly Illustration
 Index of Sub Assemblies
 Sub Assembly Illustration
 Index of Sub Assemblies
 Sub Assembly Illustration

NOTES

IDEALARC® DC-1500



Transformer & Internal Parts (Right Side)

Index of Sub Assemblies

Index of Sub Assemblies

Index of Sub Assemblies

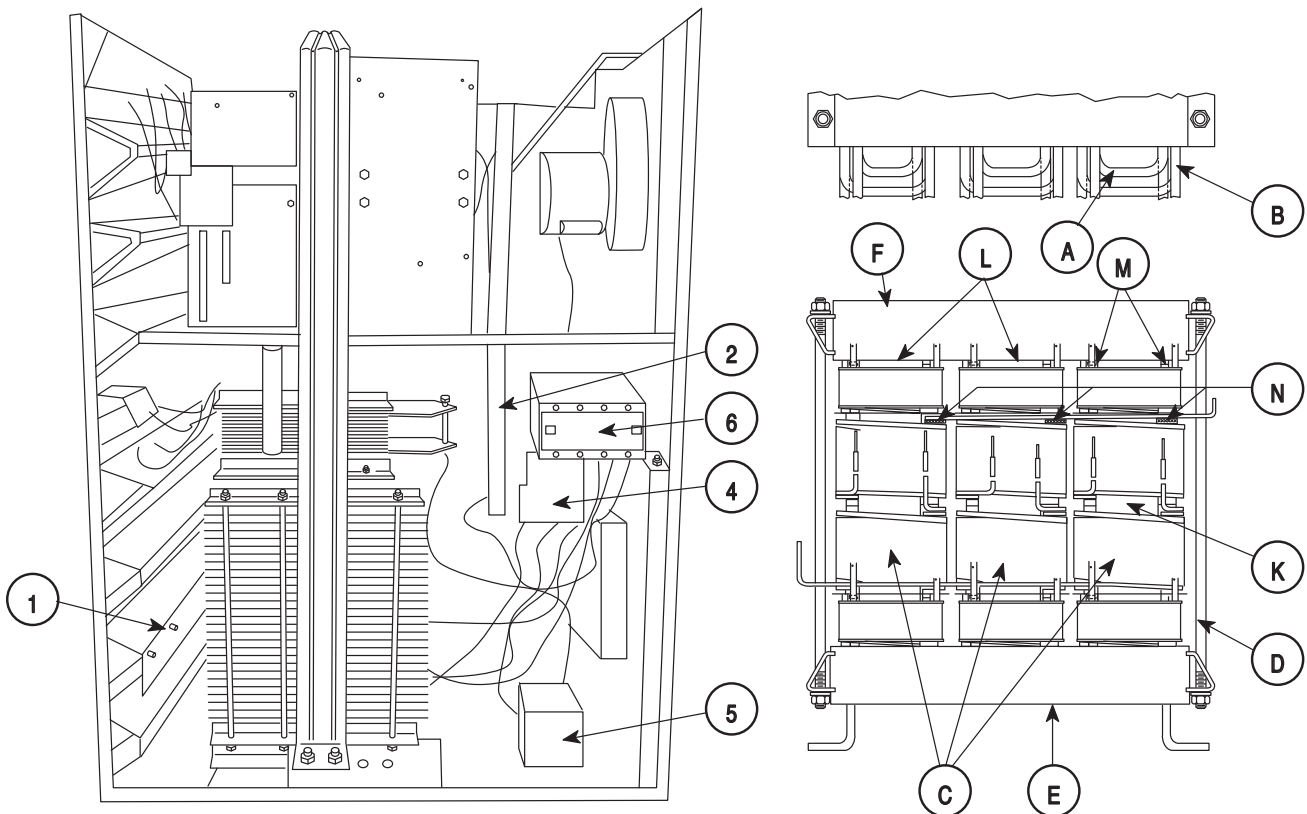
Index of Sub Assemblies

Part Numbers

Part Numbers

Part Numbers

Part Numbers



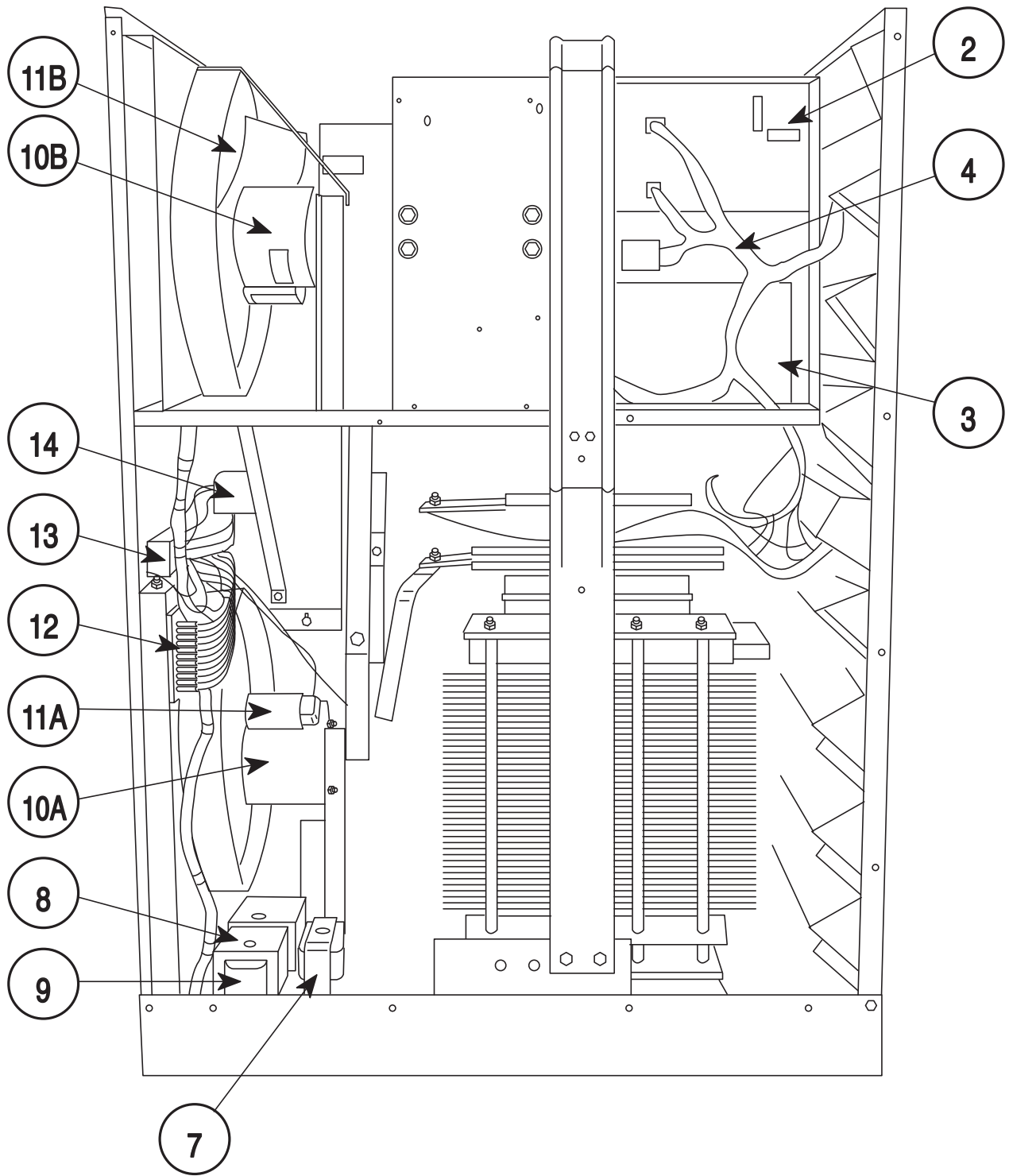
Indicates a change this printing.

Use only the parts marked "x" in the column under the heading number called for in the model index page.

ITEM	DESCRIPTION	PART NO.	QTY.	1	2	3	4	5	6	7	8	9
1	Complete Welded Transformer Assembly											
1	Transformer Assembly	L5331 ø	1	X	•	•	•					
1	Transformer Assembly (460 or 380/440V)	L5403-5	1	•	X	X	X					
1	Transformer Assembly (575V)	L5403-6	1	•	X	X	•					
1	Transformer Assembly (415V)	L5403-7	1	•	X	X	•					
1	Transformer Assembly (500V)	L5403-8	1	•	X	X	•					
A	Primary Coils	See P-118-B.1	6	X	X	X	X					
B	Outer Primary Coils	See P-118-B.1	6	X	X	X	X					
C	Secondary Coils	See P-118-B.1	6	X	X	X	X					
D	Studs	T9781-45	8	X	X	X	X					
E	Upper Lamination Assembly (M12811-2)	NSS	1	X	X	X	X					
F	Upper Lamination Assembly (L3841-11)	NSS	1	X	X	X	X					
K	Middle Lamination Assembly (S15325)	NSS	3	X	X	X	X					
L	Insulating Barrier (S15420-1)	NSS	6	X	X	X	X					
M	Molding Compound Insert (T13914)	NSS	6	X	X	X	X					
N	Insulating Barrier (S15420)	NSS	6	X	X	X	X					
2	Interphase Coil & Lamination Asbly, Includes: Interphase Coil	M12810 See P-118-B.1	1 2	X X	X X	X X	X X					
3	Primary Coil Thermostat (T13398) (Not Shown)	NSS	1	X	X	X	X					
4	Reconnect Panel Assembly	S15346	1	X	•	•	•					
4	Reconnect Panel Assembly	M14120	1	•	X	X	•					
4	Reconnect Panel Assembly	M14120-1	1	•	•	•	X					
5	Auxiliary Power Transformer (T1) (415V)	M12750-8 ø	1	•	X	•	•					
5	Auxiliary Power Transformer (T1) (415V)	M12750-11	1	•	•	X	•					
5	Auxiliary Power Transformer (T1) (460 or 380/440)	M12750-4	1	X	X	•	•					
5	Auxiliary Power Transformer (T1) (460 or 380/440)	M12750-9	1	•	•	X	X					
5	Auxiliary Power Transformer (T1) (575 or 500V)	M12750-7	1	•	X	•	•					
5	Auxiliary Power Transformer (T1) (575 or 500V)	M12750-10	1	•	•	X	•					
5	Auxiliary Power Transformer (T1) (Codes 7562-NL, 7636-NL & 7676-NL Only)	M12750-5	1	X	X	•	•					
	Auxiliary Transformer Coil	See P-118-B.1	1	X	X	X	X					
6	Line Contactor Assembly	S15473 ø	1	X	X	•	•					
6	Line Contactor Assembly	M12161-24	1	•	•	X	•					
6	Line Contactor Assembly	M12161-95	1	•	•	•	X					

Index of Sub Assemblies
 Sub Assembly Illustration
 Index of Sub Assemblies
 Sub Assembly Illustration
 Index of Sub Assemblies
 Sub Assembly Illustration
 Index of Sub Assemblies
 Sub Assembly Illustration

Internal Parts (Left Side)



Index of Sub Assemblies

Part Numbers

Index of Sub Assemblies

Part Numbers

Index of Sub Assemblies

Part Numbers

Index of Sub Assemblies

Part Numbers

Indicates a change this printing.

Use only the parts marked "x" in the column under the heading number called for in the model index page.

ITEM	DESCRIPTION	PART NO.	QTY.	1	2	3	4	5	6	7	8	9
2	Control Circuit P.C. Board Above Code 7600)	G1424 (Note A)	1	X	•	•	•					
2	Control Circuit P.C. Board	G1488-3 (Note A)	1	•	X	X	•					
2	Control Circuit P.C. Board (Above Code 8250)	G1530-2 (Note A)	1	•	•	X	X					
3	Firing Circuit P.C. Board	G1363 (Note A)	1	X	X	•	•					
3	Firing Circuit P.C. Board (Above Code 8600)	G1587-1 (Note A)	1	•	•	X	X					
4	Relay (2 CR)	S15122-11	1	X	X	X	X					
7	Transformer (T2) (460V & 415V)	M12390-5	1	X	X	X	•					
7	Transformer (T2) (575V)	M12390-12	1	X	X	X	•					
7	Transformer (T2) (500V)	M12390-37	1	•	•	X	•					
7	Transformer (T2) (460V & 415V)	M12390-40	1	•	•	•	X					
7	Transformer (T2) (575V)	M12390-52	1	•	•	•	X					
7	Transformer (T2) (500V)	M12390-46	1	•	•	•	X					
8	Transformer (T3) (460V & 415V)	M12390-7	1	X	X	X	•					
8	Transformer (T3) (575V)	M12390-13	1	X	X	X	•					
8	Transformer (T3) (500V)	M12390-38	1	•	•	X	•					
8	Transformer (T3) (460V & 415V)	M12390-41	1	•	•	•	X					
8	Transformer (T3) (575V)	M12390-53	1	•	•	•	X					
8	Transformer (T3) (500V)	M12390-47	1	•	•	•	X					
9	Transformer (T4) (460V & 415V)	M12390-8	1	X	X	X	•					
9	Transformer (T4) (575V)	M12390-14	1	X	X	X	•					
9	Transformer (T4) (500V)	M12390-39	1	•	•	X	•					
9	Transformer (T4) (460V & 415V)	M12390-42	1	•	•	•	X					
9	Transformer (T4) (575V)	M12390-54	1	•	•	•	X					
9	Transformer (T4) (500V)	M12390-48	1	•	•	•	X					
10A	Fan Motor (Lower)	S14779-4	1	X	X	X	X					
10B	Fan Motor (Upper)	S14779-4	1	X	X	X	•					
10B	Fan Motor (Upper)	S14779-6	1	•	•	•	X					
11A	Fan (Lower)	M6819-7	1	X	X	X	X					
11B	Fan (Upper)	M6819-7	1	X	X	X	•					
11B	Fan (Upper)	M6819-8	1	•	•	•	X					
12	Terminal Strip	S14530-7	1	X	X	X	X					
	Number Plate	T10726-95	1	X	X	X	X					
13	Control Circuit Transformer (T7)	S15505	1	X	X	X	X					
14	Relay (6 CR)	S15611	1	X	X	X	X					
	Relay Dust Cover	M13028	1	X	X	X	X					
	Parts Not Illustrated:											
	Fault Protection P.C. Board	G1365	1	X	•	•	•					
	Resistor (R7)	T12732-1	1	X	•	•	•					
	Relay (7 CR) (Codes 7500 to 7800 Only)	S14293-5	1	X	•	•	•					
	Starting Relay Asbly (Codes 8100 to 8250), Includes:	M13863	1	•	•	X	X					
	Relay (7 CR)	S14293-7	1	•	•	X	X					
	Relay (5 CR)	S14293-9	1	•	•	X	X					
	Ground Screw Assembly (CE Machines)	S18922-1	5	•	•	•	X					
	Output Stud Cover Assembly (CE Machines)	L10671	1	•	•	•	X					
	Ground Strap (CE Machines)	S14113-10	1	•	•	•	X					

Note A: This P.C. Board may be used to replace any previous P.C. Board

Index of Sub Assemblies
 Sub Assembly Illustration
 Index of Sub Assemblies
 Sub Assembly Illustration
 Index of Sub Assemblies
 Sub Assembly Illustration
 Index of Sub Assemblies
 Sub Assembly Illustration

Auxiliary Power Panel Assembly

Index of Sub Assemblies

Index of Sub Assemblies

Index of Sub Assemblies

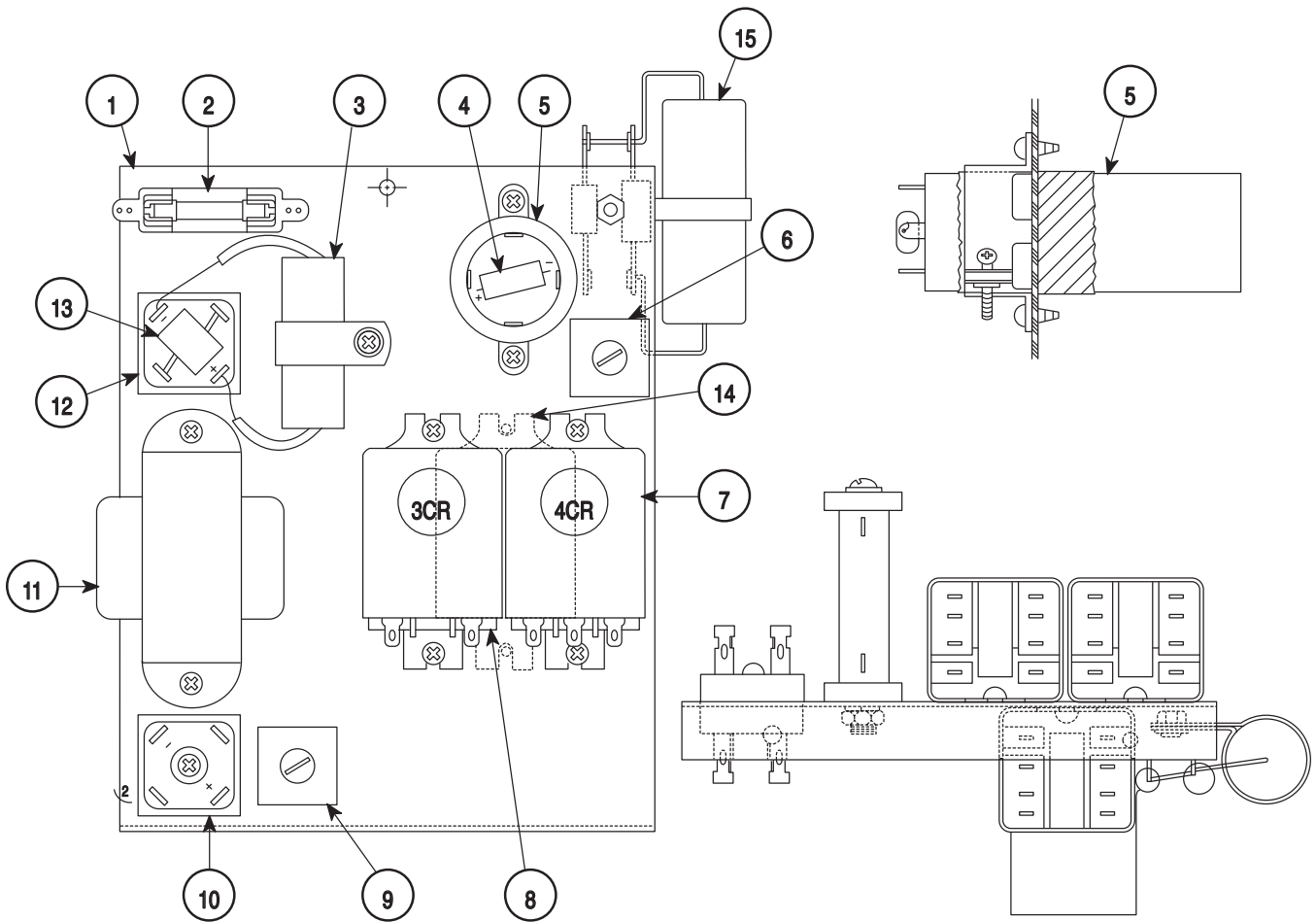
Index of Sub Assemblies

Part Numbers

Part Numbers

Part Numbers

Part Numbers



Indicates a change this printing.

Use only the parts marked "x" in the column under the heading number called for in the model index page.

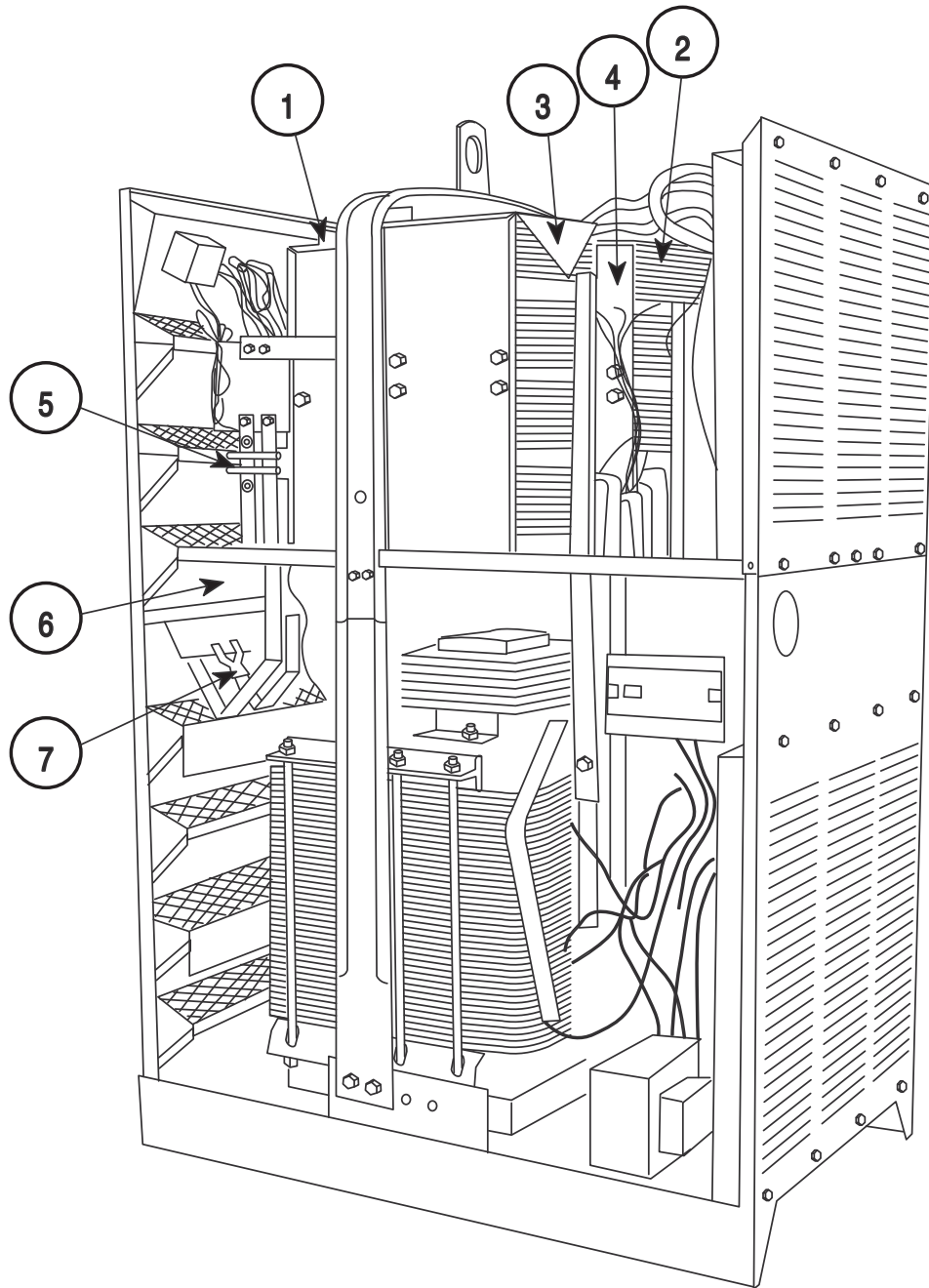
ITEM	DESCRIPTION	PART NO.	QTY.	1	2	3	4	5	6	7	8	9
1	Auxiliary Power Panel Assembly, Includes: Mounting Panel	L5434 M12918	1 1	X X								
2	Fuse Block Fuse (F1)	S10289 T10728-24 ø	1 1	X X								
3	Capacitor Assembly (C8)	S13862	1	X								
4	Resistor (R4)	T12733-2	1	X								
5	Capacitor (C9)	T11577-24	1	X								
6	Resistor (R3) Insulating Washer	T12300-32 T4479-A	1 2	X X								
7	AC Relay Assembly (4 CR)	T13845	1	X								
8	Current Relay (3 CR)	S14293-4	1	X								
9	Resistor (R5) Insulating Washer	S10404-57 T4479-A	1 2	X X								
10	Rectifier (Rect 2)	T13637	1	X								
11	Transformer (T8)	S15501	1	X								
12	Rectifier (Rect 1 & 3)	T13637	2	X								
13	Thyrector Diode Assembly (TP1)	T13845-1	1	X								
14	Auxiliary DC Relay Assembly (5 CR)	T13845-1	1	X								
15	Time Delay Assembly	S15638	1	X								

Ø This part is obsolete and no longer available.



Index of Sub Assemblies
 Sub Assembly Illustration
 Index of Sub Assemblies
 Sub Assembly Illustration
 Index of Sub Assemblies
 Sub Assembly Illustration
 Index of Sub Assemblies
 Sub Assembly Illustration

Rectifier Assembly



Index of Sub Assemblies
Index of Sub Assemblies
Index of Sub Assemblies
Index of Sub Assemblies

Part Numbers
Part Numbers
Part Numbers
Part Numbers

Indicates a change this printing.

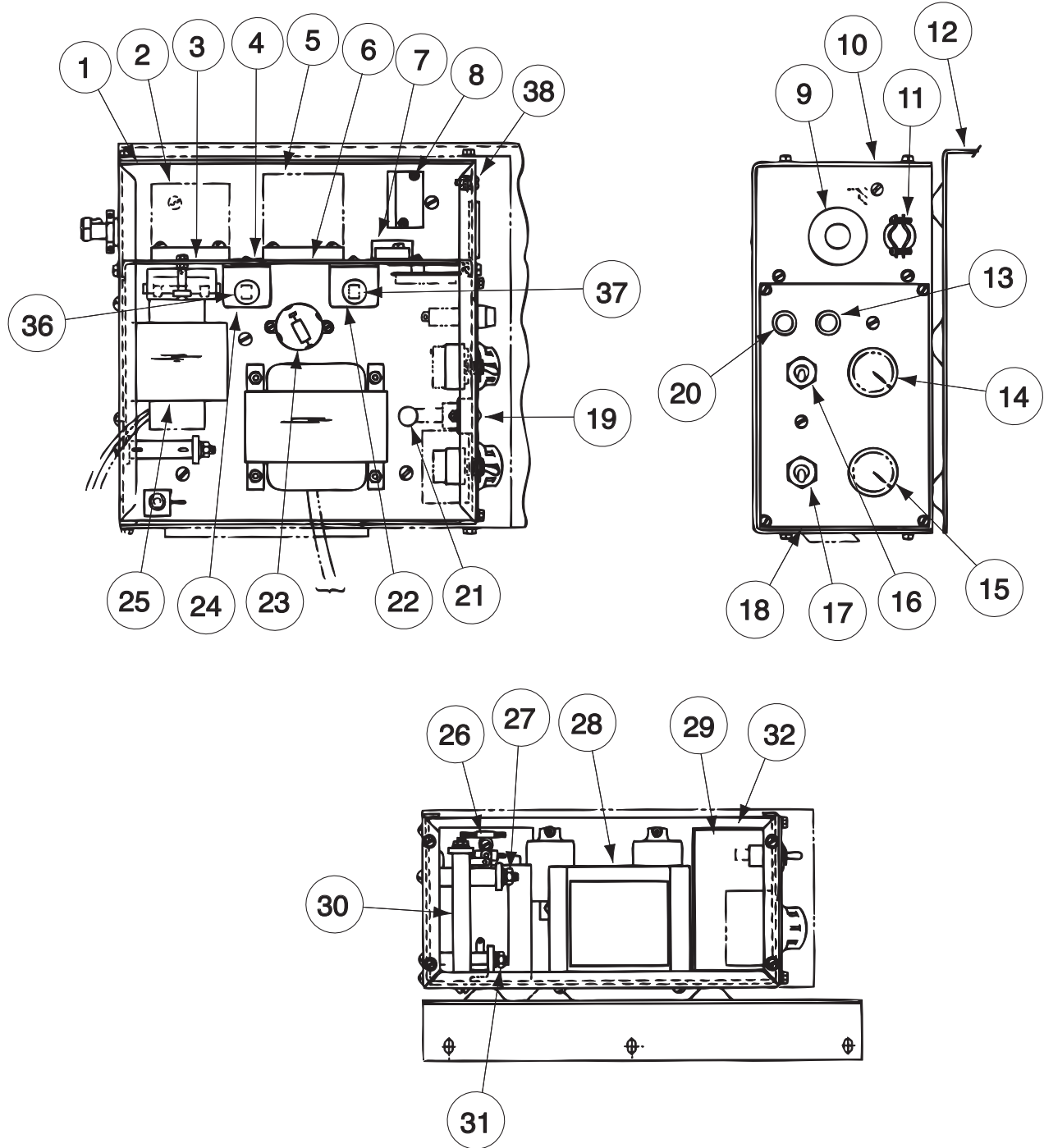
Use only the parts marked "x" in the column under the heading number called for in the model index page.

ITEM	DESCRIPTION	PART NO.	QTY.	1	2	3	4	5	6	7	8	9
1	Rectifier Assembly (Front Center)	L5348-5	1	X								
2	Rectifier Assembly (Rear Left)	L5348-4	1	X								
3	Rectifier Assembly (Rear Right)	L5348-6	1	X								
4	Snubber P.C. Board (Mounts on Item 2)	L6981	1	X								
4	Snubber P.C. Board (Mounts on Item 3)	L6980	1	X								
5	Shunt Assembly (Above Code 7800)	S16018	1	X								
5	Shunt Assembly (Below Code 7800)	S15326	1	X								
	Reed Switch Assembly (4 CR) (Below Code 8100)	S12334-23	1	X								
	Reed Switch Assembly (4 CR) (Above Code 8100)	S12334-33	1	X								
6	Diode Heatsink Assembly (Below Code 8100)	T13840	1	X								
6	Diode Heatsink Assembly (Above Code 8100)	T14450	1	X								
7	Resistor (R2) (Hidden Behind Vertical Member)	S10404-7	1	X								
	Resistor Mounting Stud	T9781-34	1	X								
	Resistor Insulating Washers	T9764-2	4	X								



Index of Sub Assemblies
 Sub Assembly Illustration
 Index of Sub Assemblies
 Sub Assembly Illustration
 Index of Sub Assemblies
 Sub Assembly Illustration
 Index of Sub Assemblies
 Sub Assembly Illustration

NL Option (K783)



Indicates a change this printing.

Use only the parts marked "x" in the column under the heading number called for in the model index page.

ITEM	DESCRIPTION	PART NO.	QTY.	1	2	3	4	5	6	7	8	9
1	Case	L5724	1	X								
2	Relay (4 CR)	S10101 ø	1	X								
3	Identification Sticker	T12286-4	1	X								
4	Case Partition	M13324	1	X								
4	Grommet Strip	T12823-11	1	X								
5	Relay (1 CR)	S12807	1	X								
6	Identification Sticker	T12286-1	1	X								
7	Terminal Strip	S8542-2 ø	1	X								
7	Number Plate	T10726-118	1	X								
8	Terminal Strip	S13323-5	1	X								
8	Number Plate	T10726-63 ø	1	X								
9	Grommet	S10255-4	1	X								
10	Case Cover	L5726	1	X								
11	Box Connector	T9639-2	2	X								
12	Adapter Plate	L5725	1	X								
13	Fuse	T10728-4	1	X								
13	Fuse Holder	S10433	1	X								
14	Potentiometer	T10812-40	1	X								
14	Insulation	T12792-1	1	X								
14	Knob	T10491	1	X								
15	Rheostat	T10812-16	1	X								
15	Knob	T10491	1	X								
16	Polarity Switch	T13784	1	X								
17	Delay Switch	T10800-4	1	X								
18	Nameplate	M13317	1	X								
19	Rectifier	T13637	2	X								
20	Fuse	T10728-5	1	X								
20	Fuse Holder	S10433	1	X								
21	Thyrector Diode	T13846	1	X								
22	Relay (3 CR)	T13845	1	X								
23	Capacitor	T11577-24 ø	1	X								
23	Resistor	T12733-2	1	X								
24	Relay (2 CR)	S14293-4 ø	1	X								
25	Transformer (T2)	S15916 ø	1	X								
26	Time Delay Assembly	S15914	1	X								
26	Insulation	T11472-17 ø	1	X								
27	Resistor (R 15)	S10104-29	1	X								
27	Insulating Washer	T4479-A	2	X								
28	Transformer (T1)	S15917	1	X								
29	Time Delay P.C. Board	M13313 ø	1	X								
30	Resistor (R12)	T10695	1	X								
30	Insulating Washer	T4479-A	2	X								
31	Resistor (R1)	T12300-32	1	X								
32	Insulation	T14067	1	X								
36	Identification Sticker	T12286-2	1	X								
37	Identification Sticker	T12286-3	1	X								
38	Thread Cutting Screw	S9225-30	1	X								
	Lock Washer	T9695-1	1	X								
	Plain Washer	S9262-27	2	X								
	#10-24 HN	CF000010	2	X								

Index of Sub Assemblies
 Sub Assembly Illustration
 Index of Sub Assemblies
 Sub Assembly Illustration
 Index of Sub Assemblies
 Sub Assembly Illustration
 Index of Sub Assemblies
 Sub Assembly Illustration

NOTES

IDEALARC® DC-1500

