

## HI 772 Marine Alkalinity Quick Reference Guide

### TECHNICAL SPECIFICATIONS

- **Range:** 0.0 to 20.0 dKH
- **Resolution:** 0.1 dKH
- **Accuracy:**  $\pm 0.3$  dKH  $\pm 5\%$  of reading @ 25 °C / 77 °F
- **Light Source:** Light Emitting Diode @ 610 nm
- **Light Detector:** Silicon Photocell
- **Method:** Colorimetric method. The reaction causes a distinctive range of colors from yellow to green to greenish blue to develop.
- **Environmental:** 0 to 50 °C (32 to 122 °F);  
max 95% RH non-condensing
- **Battery Type:** 1 x 1.5V AAA
- **Auto-Shut off:** After 10 minutes of non-use
- **Dimensions:** 86.0 x 61.0 x 37.5 mm (3.4 x 2.4 x 1.5 ")
- **Weight:** 64 g (2.3 oz.)

### TIPS FOR AN ACCURATE MEASUREMENT

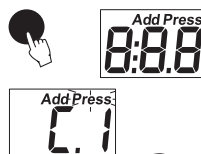
- It is important that the sample does not contain any debris.
- Whenever the cuvette is placed into the measurement cell, it must be dry outside, and completely free of fingerprints, oil and dirt. Wipe it thoroughly with **HI 731318** or a lint-free cloth prior to insertion.
- Shaking the cuvette can generate bubbles, causing higher readings. To obtain accurate measurements, remove bubbles by swirling or by gently tapping the cuvette.
- Do not let the reacted sample stand for too long after reagent is added, as accuracy will be affected.
- After the reading it is important to immediately discard the sample, otherwise the glass might become permanently stained.



[www.hannainst.com](http://www.hannainst.com)

### TAKING MEASUREMENTS

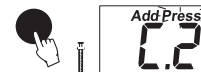
- Turn the meter on by pressing the button. All segments will be displayed. When the display shows "Add", "C.1" with "Press" blinking, the meter is ready.



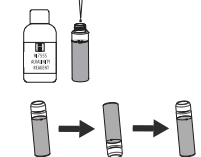
- Fill the cuvette with 10 mL of unreacted sample and replace the cap. Place the cuvette into the meter and close the meter's cap.



- Press the button. When the display shows "Add", "C.2" with "Press" blinking the meter is zeroed.

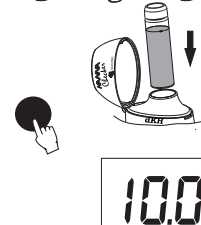


- Remove the cuvette from the meter and unscrew the cap. Using a 1 mL syringe carefully add exactly 1.00 mL of HI 7555 Reagent to the sample. Replace the cap and gently invert 5 times. Place the cuvette back into the meter.



**Note:** Pay attention not to spill reagent otherwise full color development may be inhibited.

- Press the button. The instrument directly displays the concentration of alkalinity in dKH. Alkalinity conversion:  
1 dKH = 17.86 ppm  $\text{CaCO}_3$   
= 0.358 meq/L  
The meter automatically turns off after 10 minutes.



**Note:** For error messages and battery replacement see the instruction manual.