



- HOME
- PRODUCTS
- FEEDBACK
- DOWNLOAD
- ABOUT US
- NEWS
- CONTACT



Categories

UEE-Ultrasonic Flaw Detector

Home> Products >UEE-Ultrasonic Flaw Detector

> UEE series products

- ▶ [UEE-Portable Hardness Tester](#)
- ▶ [UEE-Coating Thickness Gauge](#)
- ▶ [UEE-Ultrasonic Thickness Gauge](#)
- ▶ [UEE-Ultrasonic Flaw Detector](#)

> Benchtop Hardness Tester



> Metallurgical Microscope

> Portable Hardness Tester

> Coating Thickness Gauge

> Ultrasonic Thickness Gauge

> Flaw Detector

> Surface Roughness Tester



### Ultrasonic Flaw Detector Uee981 Series

INQUIRY

PDF Format

Your name\*:

Your E-mail\*:

Got a question?\*

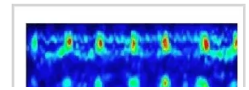
Send

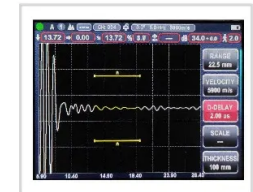
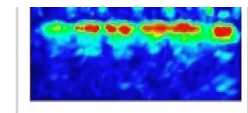
### Description

## Ultrasonic Flaw Detector Uee981 Series

 ~220V    
  USB    
  Software    
  LCD    
  Limit



## Functions & Features

- IP65, portable and ultra-thin design
- Meet the requirements of EN12668-1
- Square wave pulser, PRF up to 3 kHz for fast scanning / detecting
- High-speed sampling for clear and stable echo diagram with all details
- High numbers of digital filters, suitable for nearly any application
- Anti-noise design, high signal-to-noise ratio, perfect for tough working conditions
- With standard DAC/ TCG /DGS / AVG function, Color B-Scan
- Built-in standards, AWS D1.1/D1.5. tools, flaw detection video recording
- Reports can be automatically formed and viewed on the equipment
- PC connection / Blue tooth connection to mobile for data management and reports printing on-site
- Storage: 1000 groups of data (expandable); External USB for directly storage (unlimited memory)
- Battery life  $\geq$  10 hours, with fast independent charging control
- Language: English ( expandable: German / Turkish / Korean / Spanish and etc)

## Application

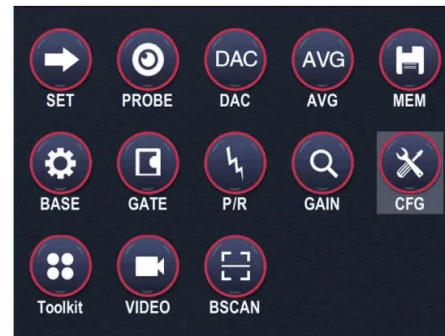
Quickly and accurately detection, positioning, evaluation and diagnosis of various flaws in the work-piece, such as welding cracks, defects and etc. It Widely used in Steel Structure Industry, electric power, petrochemical, boiler and pressure vessel, railway transportation, automobiles, machinery, and other fields.

## Technical Parameters

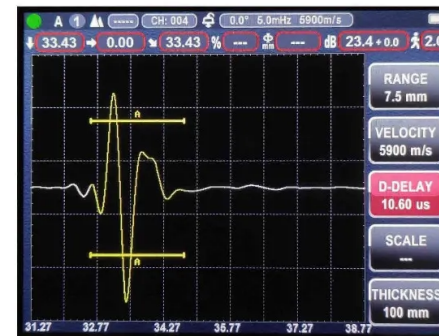
Model	Uee981S <sup>mart</sup>	Uee981O <sup>ptimum</sup>	Uee981E <sup>xpert</sup>
Scan Range(mm)	0~10000mm	0~12000mm	0~15000mm
Velocity Range (m/s)	1000~15000	500~18000	100~20000
Gain Range(dB)	110dB	120dB	120dB
Operating Frequency	0.2~20MHz	0.2~25MHz	0.2~35MHz
Pulse Repetition Frequency	10~1500Hz	10~2500Hz	10~3000Hz
Vertical linearity error	≤2.5%	≤2.5%	≤2.5%
Horizontal linearity error	≤0.2%	≤0.2%	≤0.2%
Sampling Frequency	150Mhz	200Mhz	320Mhz
Transducer Frequency Max.	15MHz	20MHz	30MHz
Dynamic Range	≥38dB	≥38dB	≥38dB
Resolution	≥40dB	≥40dB	≥40dB
Testing sensitivity	≥65dB	≥65dB	≥65dB
Pulse amplitude	100V~500V	100V~500V	100V~500V

Pulse Width	0.03~0.51μs	0.03~0.51μs	0.03~0.51μs
Transducer Damping	50Ω~400Ω	50Ω~400Ω	50Ω~400Ω
Interface for Probe cable	BNC (Optional LEMO)	BNC (Optional LEMO)	BNC (Optional LEMO)
Working mode	7 modes: Straight / Angle / Dual crystal probe, Penetrating detection and etc.		
Power Supply	100-240V 50-60Hz; DC 9V Rechargeable Li-ion battery, 10+ hours life		
Dimension & Weight	Dimension 240×153×38mm; Net weight 0.98kg (with Li-ion battery)		
Environment	Temperature -10~50°C, Humidity 20~ 95%RH		

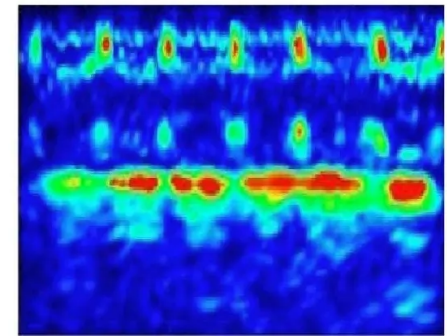
## Pictures



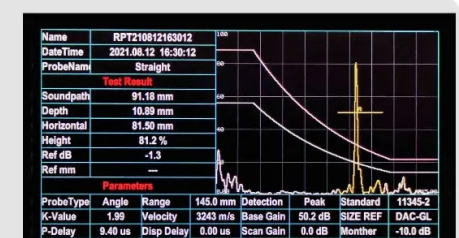
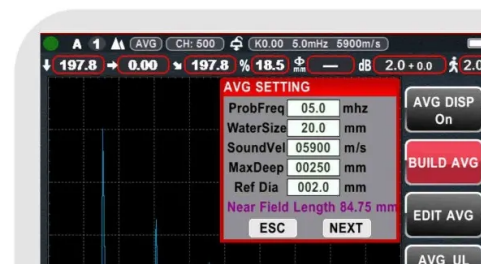
Menu

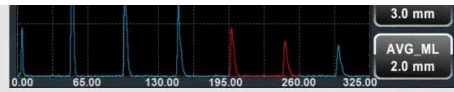


Main Interface

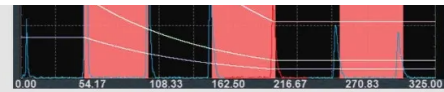


Color B scan





AVG interface



DAC interface

X-Freq	2.50 MHz	Thickness	13.0 mm	L-Correct	0.0 dB	evaluate	-14.0 dB
X-Value	12.00 mm	Diameter	----	Energy	350 V	----	----
Damping	500 Ω	Scale	Sound Path	Pulse Width	250 nS	weld length	300.0 mm
Rectify	Full Wave	Reject	Off	PRF	150 Hz	flaw length	47.0 mm
X-Size	13.0x13.0	Gate Logic	GATE A	Curve Type	DAC	Result	No

Automatic Reports

## Configuration

Function	Uee981S <sup>mart</sup>	Uee981O <sup>ptimum</sup>	Uee981E <sup>xpert</sup>
Square wave pulser	●	●	●
DAC/ DGS / AVG diagram	●	●	●
TCG	○	●	●
Color B-Scan	○	●	●
AWS	○	○	●
Automatic Calibration (V2)	●	●	●
PC Connection	●	●	●
Bluetooth Connection	○	●	●
External Storage (USB)	●	●	●
Detection Video	○	●	●

## Standard delivery

Name	Quantity	Name	Quantity
Main unit	1	Carry Strap	1
Probe and Cable	2	Power Adapter & Battery	1
PC software	1	Manual	1
Mobile App (Uee981O/ 981E only)	1	Certificate & Documents	1
IIW V2 Block (Uee981E only)	1	ABS Instrument Box	1



**Ultra-thin and portable design**



**Automatic report display**



**Standard Delivery**

Company Chongqing Leeb Instrument Co. Ltd POWERED BY UEESHOP