

**KUALA LUMPUR (HQ)**

No. 141-2, Jalan Radin Bagus,  
Bandar Baru Sri Petaling,  
57000 Kuala Lumpur.

**PENANG BRANCH**

7206, Mez Floor, Kompleks  
Perniagaan Pangsapuri Seri  
Cemerlang, Jalan Kampong Paya,  
12200 Butterworth, Penang.

**JOHOR BRANCH**

No.25, Jalan Bestari 24/3, Taman  
Bestari Indah, 81800 Ulu Tiram,  
Johor.

**T:** +603 - 9054 6939 **F:** +603-90545 7939 **M:** +6012-499 2103 / +6013-399 2103 (Penang) / +6017-228 2103 (Johor)  
**E:** sales@redmarkindustry.com

## Uee Series - Coating Thickness Gauge Uee923



### Functions & Features

- High quality and precision
- Software for PC connection and data transmission, analysis, and printing measurement reports.
- With built-in thermal printer. Width of printer paper: 56.5±0.5mm.
- Rechargeable Li-ion battery, available for 10 hours working continuously.
- Large memory to save 4 types of materials and 1560 testing values.
- 3 ways for easy Calibration: by one specimen, two specimens or five specimens to finish calibration.
- Five statistics: Average, Maximum, Minimum, Testing times, Standard deviation.
- Standard delivery with 5 calibration specimens (48.5m、99.8m、249m、513m、1024m)
- 3 years warranty and life-long services



# REDMARK INDUSTRY SDN. BHD. (935155-U)

## KUALA LUMPUR (HQ)

No. 141-2, Jalan Radin Bagus,  
Bandar Baru Sri Petaling,  
57000 Kuala Lumpur.

## PENANG BRANCH

7206, Mez Floor, Kompleks  
Perniagaan Pangsapuri Seri  
Cemerlang, Jalan Kampong Paya,  
12200 Butterworth, Penang.

## JOHOR BRANCH

No.25, Jalan Bestari 24/3, Taman  
Bestari Indah, 81800 Ulu Tiram,  
Johor.

T: +603 - 9054 6939 F: +603-90545 7939 M: +6012-499 2103 / +6013-399 2103 (Penang) / +6017-228 2103 (Johor)  
E: sales@redmarkindustry.com

## Measuring Materials

- Magnetic Induction (Fe): Measuring the thickness of Non-magnetic coating on magnetic metal substrate, such as aluminum, chromium, copper, zinc, rubber, paint on the base of steel, iron, alloy and magnetic steel.
- Eddy Current (NFe): Measuring the thickness of Non-conductive coating on non-magnetic metal substrate, such as rubber, plastic, paint, oxide on the base of aluminum, copper, zinc, tin.

## Technical Parameters

Model	Uee923
Measuring principle	Magnetic induction (Fe) & Eddy current (NFe)
Measuring range (μm)	0~1250μm
Accuracy	±(1%H+1) μm H refers to the thickness of testing piece
Minimum resolution (μm)	0.1μm
Min curvature of the min area (mm)	Convex1.5 Concave9
Diameter of the min area (mm)	Φ7
Critical thickness of substrate (mm)	0.5
Operating temperature	0°C~40°C
Memory	1560
Dimensions	238*90*38mm
Weight	420g
Printer	Build-in High-speed Thermal Printer
Power supply	Rechargeable Li-ion battery



# REDMARK INDUSTRY SDN. BHD. (935155-U)

## KUALA LUMPUR (HQ)

No. 141-2, Jalan Radin Bagus,  
Bandar Baru Sri Petaling,  
57000 Kuala Lumpur.

## PENANG BRANCH

7206, Mez Floor, Kompleks  
Perniagaan Pangsapuri Seri  
Cemerlang, Jalan Kampong Paya,  
12200 Butterworth, Penang.

## JOHOR BRANCH

No.25, Jalan Bestari 24/3, Taman  
Bestari Indah, 81800 Ulu Tiram,  
Johor.

T: +603 - 9054 6939 F: +603-90545 7939 M: +6012-499 2103 / +6013-399 2103 (Penang) / +6017-228 2103 (Johor)  
E: sales@redmarkindustry.com

	Main Machine, probe*1(Fe or NFe), substrate*1(Fe or NFe), software & USB, Calibration specimens*5, Users' Manual, Qualified Certificate, Paper for Printer, Power Charger, Packing list, Warranty card
Optional Accessories	Probes, Specimens, Paper for printer

## Pictures

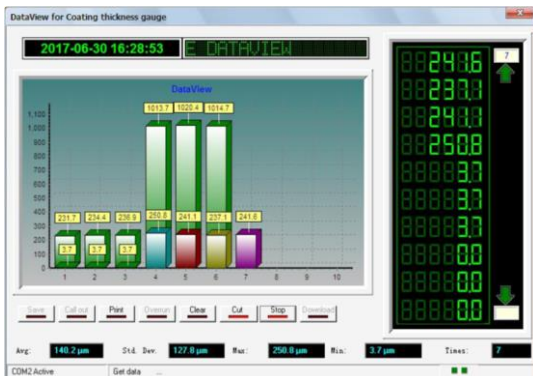


New Design

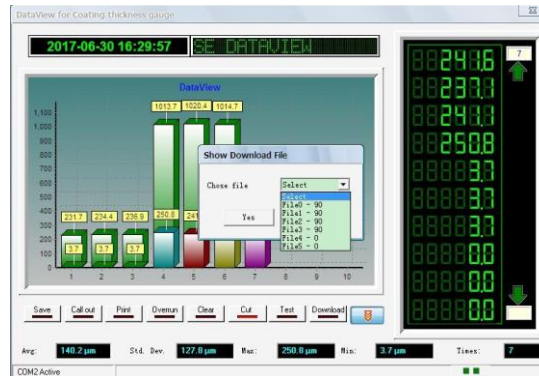
Measuring 1024um specimen

Water-proof Box

## PC Software



Receive Tesing Data



Files Download



# REDMARK INDUSTRY SDN. BHD. (935155-U)

## KUALA LUMPUR (HQ)

No. 141-2, Jalan Radin Bagus,  
Bandar Baru Sri Petaling,  
57000 Kuala Lumpur.

## PENANG BRANCH

7206, Mez Floor, Kompleks  
Perniagaan Pangsapuri Seri  
Cemerlang, Jalan Kampong Paya,  
12200 Butterworth, Penang.

## JOHOR BRANCH

No.25, Jalan Bestari 24/3, Taman  
Bestari Indah, 81800 Ulu Tiram,  
Johor.

T: +603 - 9054 6939 F: +603-90545 7939 M: +6012-499 2103 / +6013-399 2103 (Penang) / +6017-228 2103 (Johor)  
E: sales@redmarkindustry.com

## Probes



Fe probe



NFe Probe

## 5 Calibration specimens



48.5um 99.8um 249um 513um 1024um