

Call Us Today!

FREE CLEANING TRIAL

Our Background

At XTS Technologies, our mission is to help the never ceasing growth of global manufacturing through technology driven and state of the art surface treatment solutions, without neglecting the essence of cost effectiveness.

The nature of our business varies from precision industrial cleaning solution, filtration system, all the way to automation and engineering.

Our 'Xcellent Total Solution' strategy builds on our expertise in technology and outsourcing to help clients perform at the highest levels so they can create sustainable value for their clients and shareholders.

FIND US ON:



Ultrasonic Generator

FEATURES

- Output Power Control
- Overload Detection
- Sweep and Remote Function
- Micom and PLL Function
- Timer
- Touch Switch
- LCD Display



Immersion Transducer

IMMERSION TRANSDUCER provides flexible and versatile ways to add ultrasonic cleaning to new and existing tanks. It can be customized with XTRON-D Series range of ultrasonic generator to be integrated into a complete system to suit any cleaning requirement.

FEATURES

- Wide range of frequencies available for removal of different particle size
- Customizable transducers dimension
- Immersible transducer turns any existing tanks into ultrasonic cleaning device
- Suitable for wide range of industries from electronics to optics



HPS SERIES

HIGH PRESSURE SPRAY WASH

With XTS's extensive knowledge and experience in the surface treatment cleaning industry and XTS' proficiency in the precision cleaning industry, it is safe to say that you are in good hands.

Nobody knows this industry better than we do.



High Pressure Spray Cleaning



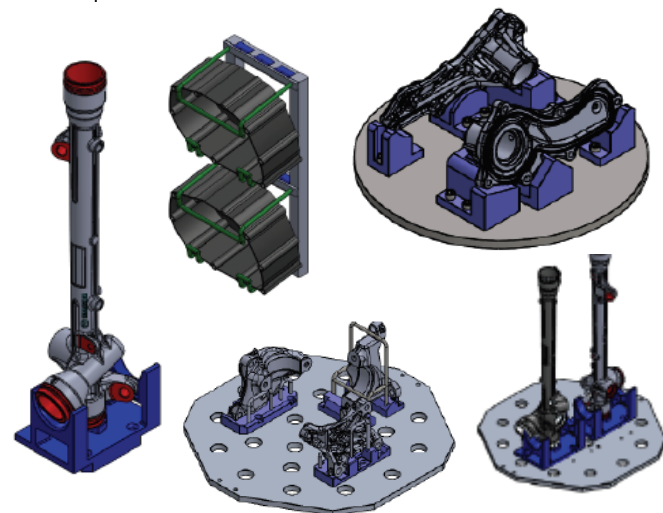
The XTS's **Compact High Pressure Spray Process system** are incorporated with High Pressure Spray Cleaning and Drying in Single Chamber design.

The system performs cleaning of Machining & Casting parts to the highest standards with minimal operator intervention with 10-15 bar High Pressure Spray Cleaning to remove coolant or chips inside the screw hole and blind hole.

"Brought to you by a group of specialists in purity process management, we know this industry best."

Changeable Jig and Nozzle

Hot Water Spray Cleaner are incorporated with Changeable Jig and Nozzle design. Our People design and fabricate accuracy and precise jiggling and nozzle pressure calculation in order to meet the cleaning requirement.



Special Features :

- Special piping and Mounting Design in order easy for next purchase jig changing
- Enhance Spray Coverage with Even & Precision Spray Cleaning
- No Adjustment on nozzle after long run.

High Pressure Cleaning

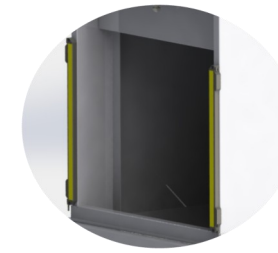
- 8-10 Bar High Pressure Spray Cleaning to remove coolant or chips inside the screw hole

Equipment Specification

- Easy load & unload parts
- SUS piping system for chemical compliance
- Pump circulation filtration
- SUS316 heater with digital temperature controller system
- PLC control with touch screen interface for individual programming of the process

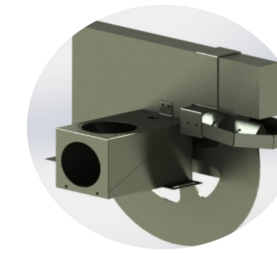
Optional Features

Safety Light Curtain



Safety light curtain used to safeguard personnel in the vicinity of moving machinery with the potential to cause harm

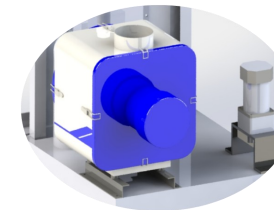
Oil Skimmer Filter



Oil skimmer filter used to filter & remove oil, debris and unwanted materials from water, solvents, cleaning solutions, etc.

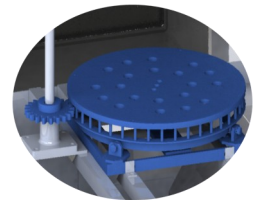
Mist Collector

A mist collector's major function is to remove mist and smoke droplets from the filtered air.

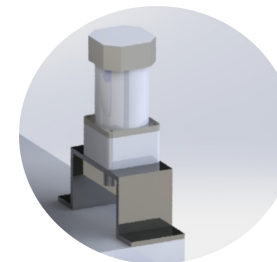


Rotary Jig

A jig's purpose is to provide repeatability, accuracy, and interchangeability in the manufacturing of products.

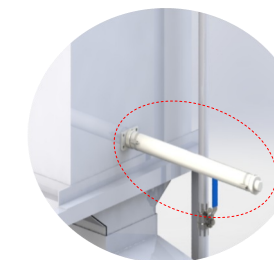


Rotary Motor



Rotary motor function to rotate the jig.

In Out Cylinder Jig



Produce a force in a reciprocating linear motion

"Pure. Precise. Proficient"

SPECIFICATION

SPECIFICATION	MODEL		
	MINI ROTARY	STANDARD ROTARY	ENLARGE ROTARY
OVERALL DIMENSION (mm)	2400 x 800 x 2200	2500 x 900 x 2300	2700 x 1100 x 2500
CHAMBER DIMENSION (mm)	400 x 400 x 400	600 x 600 x 600	750 x 750 x 750
TANK VOLUME (L)	375	720	1240

* Dimension : LxWxH