

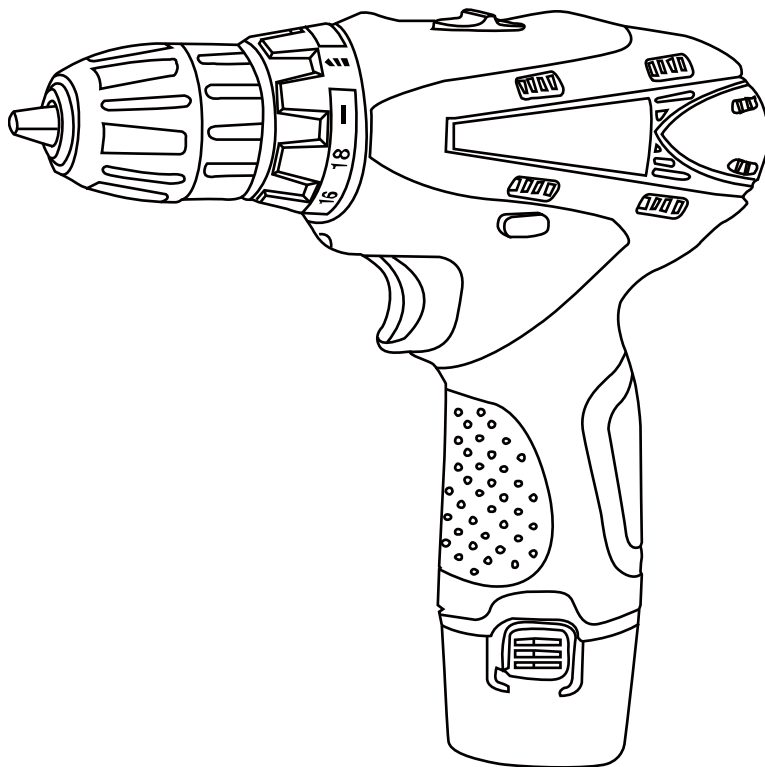
POWER ACTION®

Power action tools are your smart choice

GB

Cordless Drill

**CD1200 CD1680 CD2100
CD1200A CD2100T**



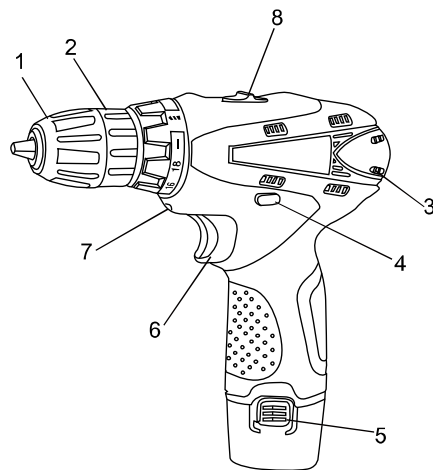
Read this operators guide carefully, before using the machine. Ensure that you know how the machine works, and how it should be operated. Maintain the machine in accordance with the instructions, and make certain that the machine functions correctly. Keep this operator's guide and other enclosed documentation with the machine.

TECHNICAL SPECIFICATIONS

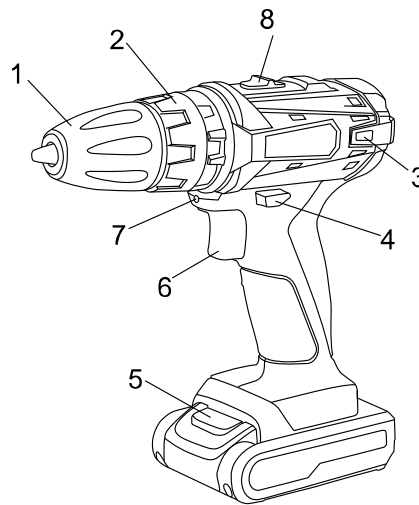
MODEL	CD1200	CD1680	CD2100
Voltage	12V	16.8V	21V
Battery capacity	2,0	2,0	2,0
No load speed	0-350/1300	0-350/1300	0-350/1300
Max torque	24N.m	26N.m	28N.m
Keyless chuck	0.8-10	0.8-10	0.8-10
Impact function	No	No	No
Drill capacity	Wood:20mm	Wood:20mm	Wood:20mm
	Steel:10mm	Steel:10mm	Steel:10mm
Charge time	1 hour	1 hour	1 hour
N.W	1.0kg	1.1kg	1.15kg

MODEL	CD1200A	CD2100T
Voltage	12V	21V
Battery capacity	2,0	2,0
No load speed	0-350/1300	0-350/1300
Max torque	24N.m	28N.m
Keyless chuck	0.8-10	0.8-10
Impact function	NO	YES
Drill capacity	Wood:20mm	Wood:20mm
	Steel:10mm	Steel:10mm
		Concrete:10mm
Charge time	1 hour	1 hour
N.W	1.1kg	1.2kg

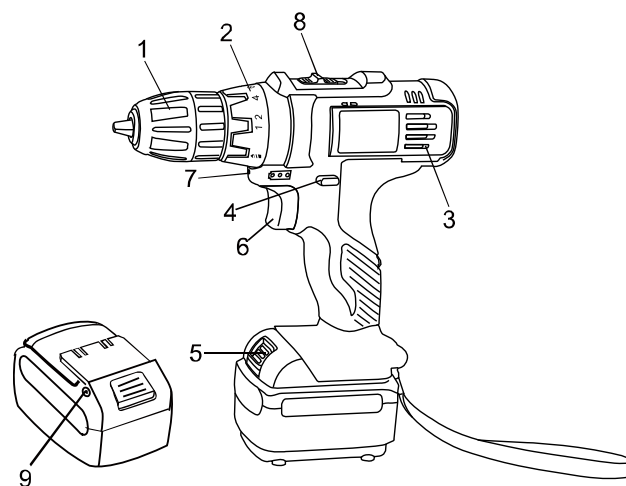
Over view



CD1200A



CD2100T



CD1200, CD1680, CD2100

- | | |
|--|-------------------------------|
| 1. Quick-action chuck. | 2. Torque limit setting ring. |
| 3. Ventilation holes. | 4. Rotation direction switch. |
| 5. Battery compartment release button. | 6. Switch trigger |
| 7. Built-in light. | 8. Speed Switch Button |
| 9. Charge hole | |

General Safety Instructions for Electric Tools

This device is exclusively for private use! It is not fit for commercial use!

WARNING! Read all instructions. Failure to follow all instructions listed below may result in electric shock, fire and/or serious injury:

SAVE THESE INSTRUCTIONS

1)Work area

- **Keep work area clean and well lit.** Cluttered and dark areas invite accidents
- **Do not operate machines in explosive atmospheres, such as in the presence of flammable liquids, gases or dust.** Machines create sparks which may ignite the dust or fumes.
- **Keep children and bystanders away while operating a machine.** Distractions can cause you to lose control.

2)Electrical safety

- **Machine plugs must match the outlet. Never modify the plug in any way. Do not use any adapter plugs with earthed (grounded) machines.** Unmodified plugs and matching outlets will reduce risk of electric shock.
- **Avoid body contact with earthed or grounded surfaces such as pipes, radiators, ranges and refrigerators.** There is an increased risk of electric shock if your body is earthed or grounded.
- **Do not expose machines to rain or wet conditions.** Water entering a machine will increase the risk of electric shock.
- **Do not abuse the cord. Never use the cord for carrying, pulling or unplugging the machine. Keep cord away from heat, oil, sharp edges or moving parts.** Damaged or entangled cords increase the risk of electric shock.
- **When operating a machine outdoors, use an extension cord suitable for outdoor use.** Use of a cord suitable for outdoor use reduces the risk of electric shock.

3)Personal safety

- **Stay alert, Watch what you are doing and use common sense when operating a machine. Do not use a machine while you are tired or under the influence of drugs, alcohol or medication.** A moment of inattention while operating machines may result in serious personal injury.
- **Use safety equipment. Always wear eye protection.** Safety equipment such as dust mask, non-skid safety shoes, hard hat, or hearing protection used for appropriate conditions will reduce personal injuries.
- **Avoid accidental starting. Ensure the switch is in the off position before plugging in.** Carrying machines with your finger on the switch or plugging in machines that have the switch on invites

accidents.

- **Remove any adjusting key or wrench before turning the machine on.** A wrench or a key left attached to a rotating part of the machine may result in personal injury.
- **Do not overreach. Keep proper footing and balance at all times.** This enables better control of the machine in unexpected situations.
- **Dress properly. Do not wear loose clothing or jewellery. Keep your hair, clothing and gloves away from moving parts.** Loose clothes, jewellery or long hair can be caught in moving parts.
- **If devices are provided for the connection of dust extraction and collection facilities, ensure these are connected and properly used.** Use of these devices can reduce dust related hazards.

4) Machine use and care

- **Do not force the machine. Use the correct machine for your application.** The correct machine will do the job better and safer at the rate for which it was designed.
- **Do not use the machine if the switch does not turn it on and off.** Any machine that can not be controlled with the switch is dangerous and must be repaired.
- **Disconnect the plug from the power source before making any adjustments, changing accessories, or storing machines.** Such preventive safety measures reduce the risk of starting the machine accidentally.
- **Store idle machines out of the reach children and do not allow persons unfamiliar with the machine or these instructions to operate the machine.** Machines are dangerous in the hands of untrained users.
- **Maintain machines. Check for misalignment or binding of moving parts, breakage of parts and any other condition that may affect the machines operation. If damaged, have the machine repaired before use.** Many accidents are caused by poorly maintained machines.
- **Keep cutting tools sharp and clean.** Properly maintained cutting tools with sharp cutting edges are less likely to bind and are easier to control.
- **Use the machine, accessories and tool bits etc., in accordance with these instructions and in the manner intended for the particular type of machine, taking into account the working conditions and the work to be performed.** Use of the machine for operations different from intended could result in a hazardous situation.

5)Service

- Have your machine serviced by a qualified repair person using only identical replacement parts.

This will ensure that the safety of the machine is maintained.

OPERATION INSTRUCTIONS

Removing /installation the battery pack

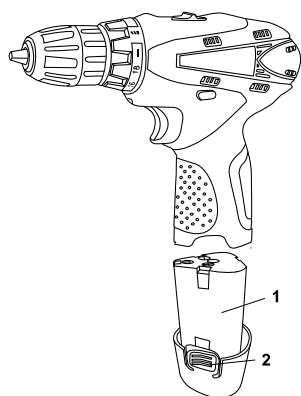
Remove

Press the battery release button (2) and pull the battery toward you (1) to disconnect the battery.

Installation

Insert the battery pack (1) until it locks into place (Fig. 1).

ATTENTION: Make sure that the two guides (3) in the battery case coincide with the guides (4) in the handle of the screwdriver.



CD1200A

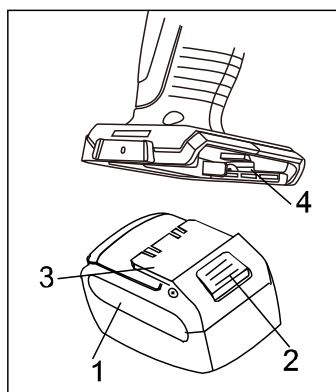


Fig.1

CD1200 CD1680 CD2100 CD2100T

Charging

For CD1200A and CD2100T

1. Connect the charger (3) to a power outlet. The indicator (1) will turn green.
2. Insert the battery (4) into the charger. The indicator (2) lights up in red.
3. The indicator (1) lights up green after a full charge.

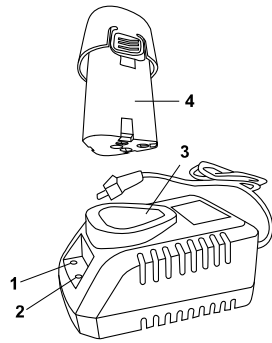
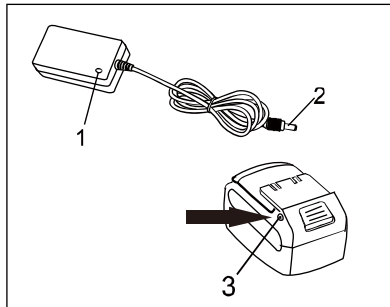


Fig.2

For CD1200, CD1680 and CD2100

1. Plug the charger into a power outlet. The indicator (1) will turn green.
2. Connect the charger (2) to the connector for connection (3) on the battery. The indicator (1) lights in red. This means that the battery has started charging.
3. When the battery has finished charging, the indicator (1) will turn green.



WARNING:

1. To keep the Li-ion working, it must not be charged at temperatures below 0 ° C or above 45 ° C.
2. If the battery pack temperature is above 45 ° C or below 0 ° C, the battery pack can not be charged. The charger is green after connect the battery pack.
3. If the battery pack is damaged. The charger is green after connect the battery pack.

Setting the torque limit.

For CD1200A CD1200 CD1680 CD2100

The screwdriver is equipped with a special rotating ring for setting the torque limit.

To set the torque limit on the rotating ring, the numbers (1) are shown.

Rotate the ring (Figure 3) until the desired digit is aligned with the arrow (2). For the correct installation, use the table below.

1-4 Screwing small screws

5-8 Screwing of medium-sized screws into soft material

9-12 Screwing screws into medium hardness material

12-14 Screwing of screws into solid material

15-16 Screwing large screws

Drilling is indicated by the symbol (3) on the rotating ring (Fig 4).

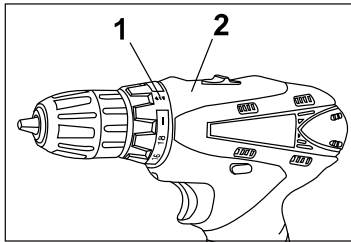


Fig 3

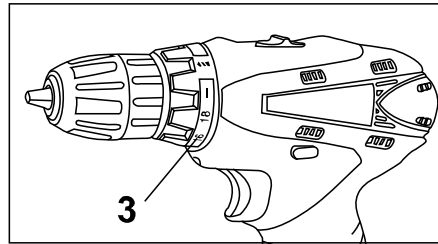



Fig 4

For CD2100T

The screwdriver is equipped with a special rotating ring for setting the torque limit. To adjust the torque limit, turn the ring (3) (Fig. 4) to the  position, then rotating the torque limiting ring, the mark 1 must coincide with the arrow (2) (Fig. 3). For the correct installation, use the table below.



1-4 screwing small screws

5-8 Screwing of medium-sized screws into soft material

9-12 screwing screws into medium hardness material

12-14 Screwing of screws into solid material

15-18 Screwing large screws

To select the drilling mode, turn the ring (3) to the  position; To adjust the percussive drilling mode, turn the ring (3) to the  position.

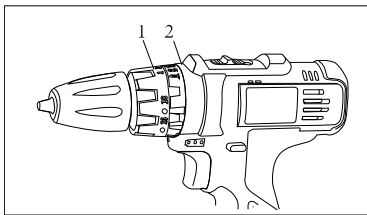


Fig 3

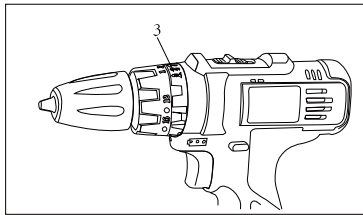


Fig 4

Rotation direction switch.

The direction switch (1) is located above the power button (2) (Fig. 5). To rotate clockwise, switch it to the left, to rotate counterclockwise to the right.

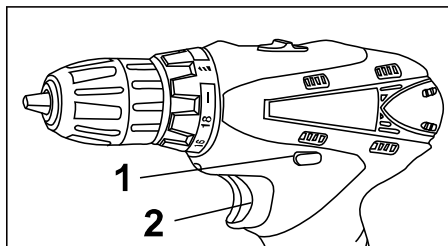


Fig 5

ATTENTION:

Use the rotational direction switch only when the tool is off.

The power button does not work when the rotation direction switch is in the middle position.

Stepless speed control.

The screwdriver is equipped with an on / off button (1) with a stepless speed control. Slow rotation occurs when the button is pressed lightly and increases with a stronger push (Fig 6).

Release the power button to stop the instrument.

ATTENTION: Rotating at low speed for a long time may cause the engine or battery to overheat. When heating, take a break for at least 15 minutes.

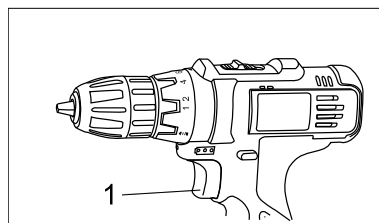


Fig 6

Built-in light.

The built-in backlight (2) turns on automatically when the power button (1) (Fig. 7) is pressed and turns off automatically when it is released.

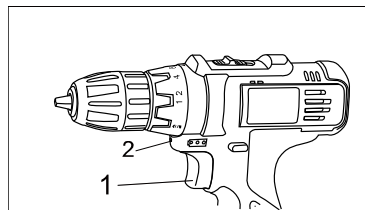


Fig 7

Install the drill bits

The screwdriver is equipped with a quick-action chuck that does not require keys when installing the tooling.

Rotate the keyless chuck (1) in the counterclockwise direction.

Open the quick-action drill chuck and insert the drill bits.

Turn the sleeve of the chuck (1) clockwise until the chuck (2) is evenly spaced and the tooling is securely clamped (Fig 8).

With a soft tool shank after a short work time, it may be necessary to tighten the cartridge.

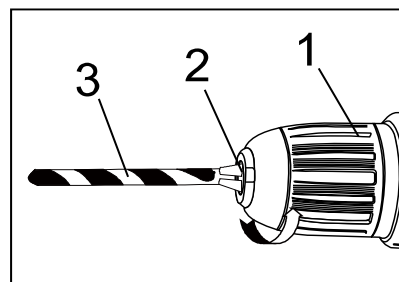
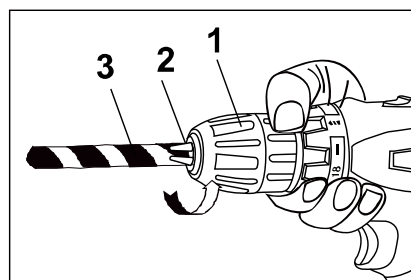




Fig 8

Changing speed

The screwdriver has two speeds, to change the speeds, move the shift button to "  " for low speed and high torque (twisting force) or to "  " for high speed and low torque (twisting force) - see fig. 10

ATTENTION! SWITCHING TO BE CARRIED OUT STRICTLY WITH AN UNBREAKABLE ENGINE! SWITCHING AT THE OPERATING ENGINE MAY BE THE REASON FOR EXIT FROM THE BUILDING OF THE RECORDER AND DAMAGE TO SUCH DAMAGE IS NOT COVERED BY WARRANTY REPAIR

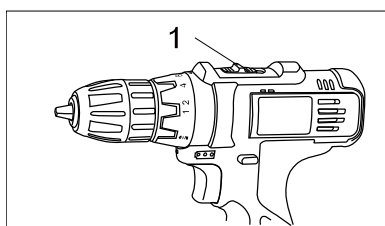


Fig. 10

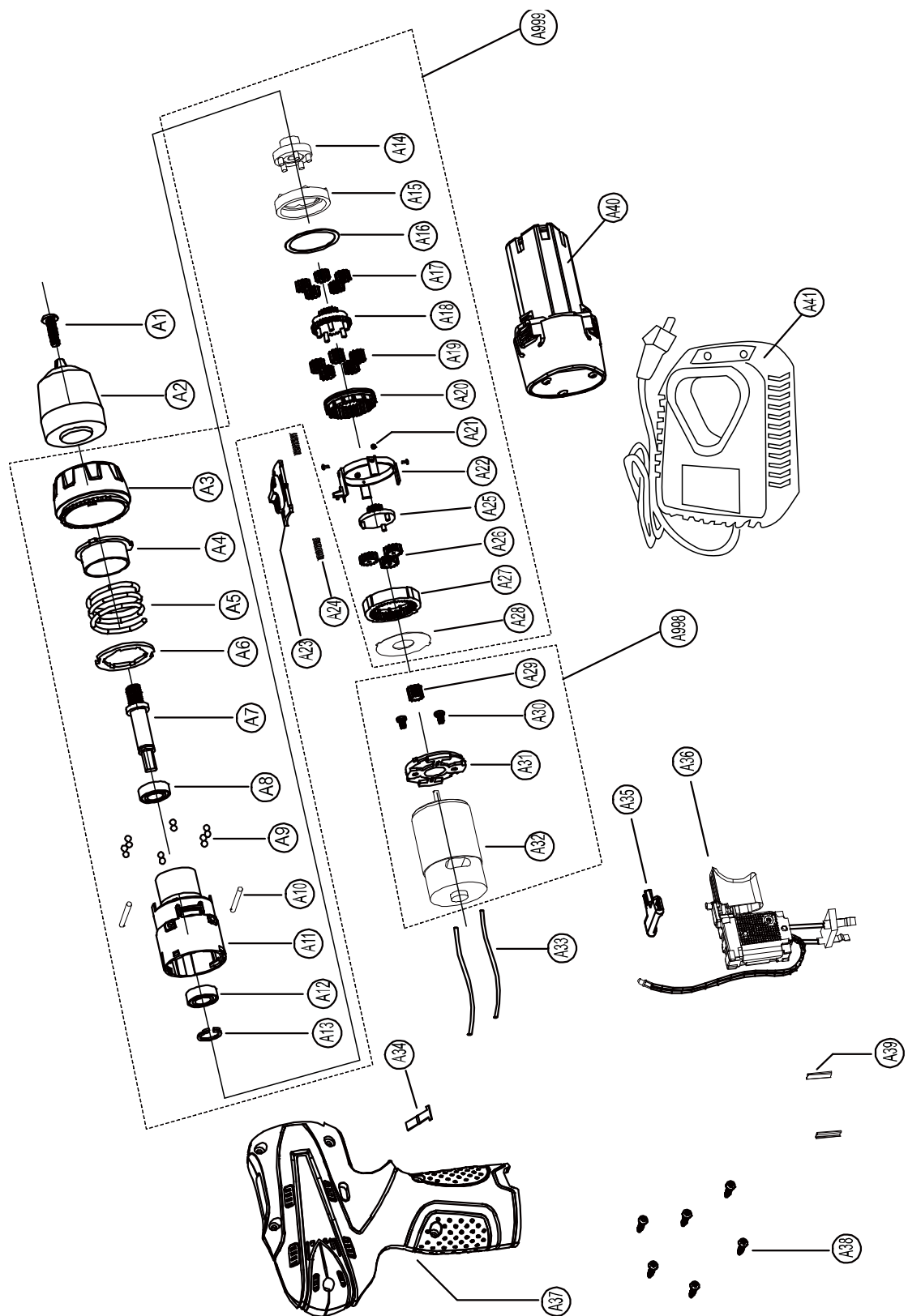
Overload

Never use excessive force when drilling. Too much pressure reduces the speed of the machine, and the required power is greatly reduced. This may result in overload, which can damage the motor of the drilling machine.

When the drilling machine becomes too hot, allow it to run for two minutes without a load and then interrupt working for a short time.

Clean the drilling machine with a clean cloth and a brush. Ensure that the ventilation slits are not blocked.

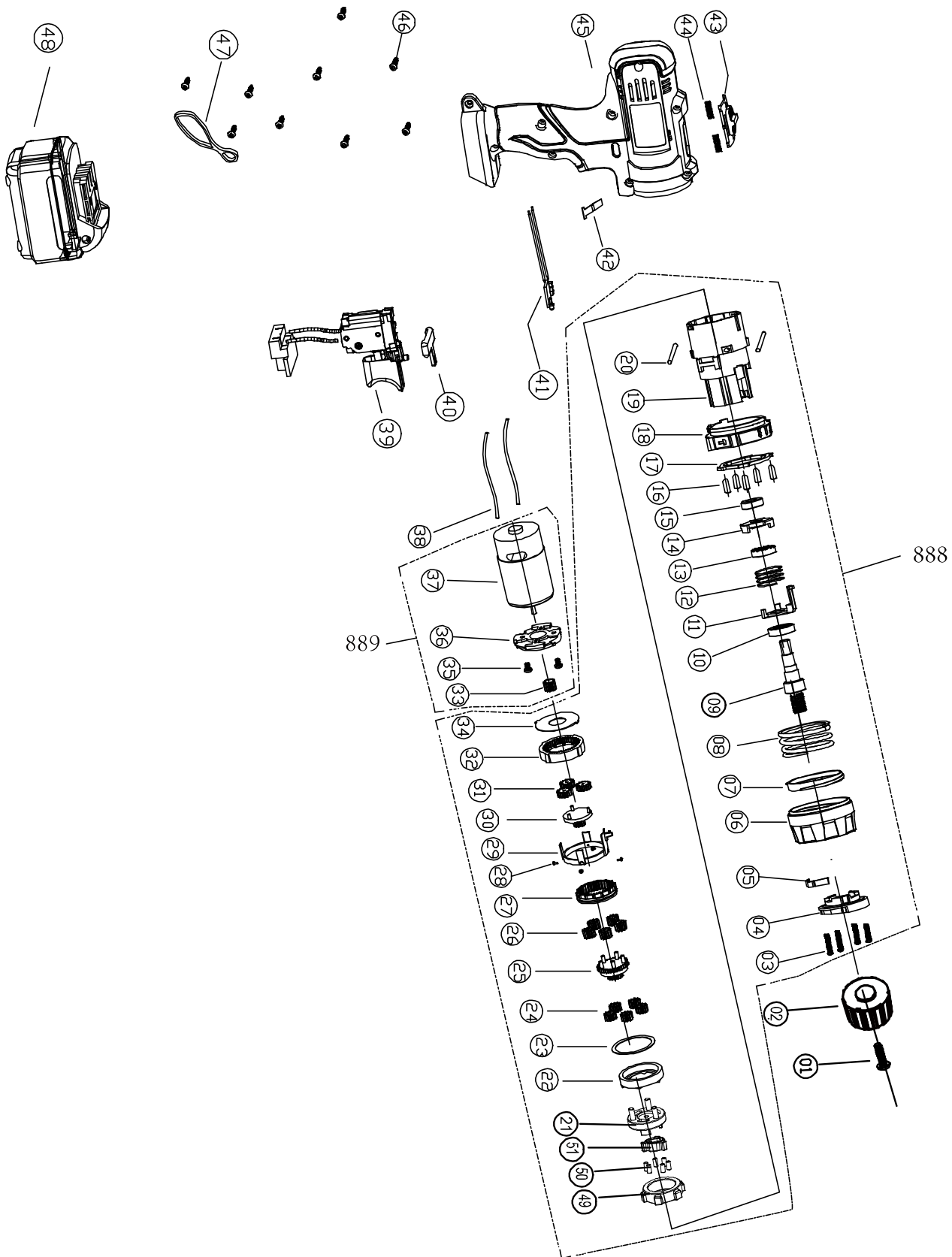
CD1200A exploded view



CD1200A Part list

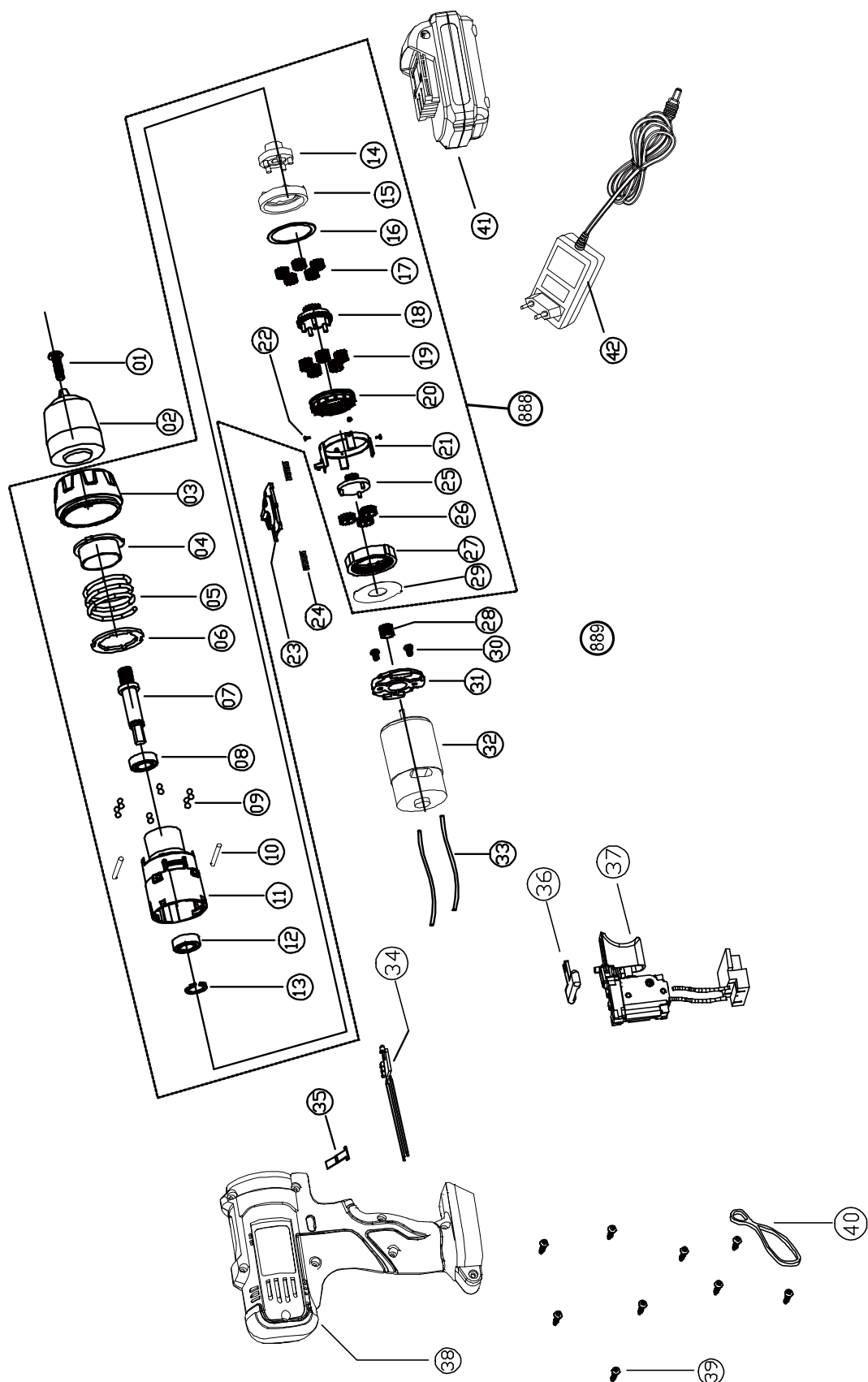
NO.	DESCRIPTION	NO.	DESCRIPTION
A1	CHUCK SCREW	A23	TWO SPEED CHANGE BUTTON
A2	KEYLESS CHUCK	A24	SPRING
A3	TORQUE ADJUSTMENT RING	A25	THE FIRST PLANETARY GEAR BRACKET
A4	TORQUE ADJUSTMENT NUT	A26	THE FIRST PLANETARY GEAR
A5	TORQUE ADJUSTMENT SPRING	A27	INNER GEAR RING
A6	TORQUE ADJUSTMENT WASHER	A28	WASHER
A7	SPINDLE	A29	MOTOR GEAR
A8	BEARING 688Z	A30	SCREW
A9	STEEL BALL	A31	PRESS BOARD
A10	PIN	A32	MOTOR
A11	GEAR BOX	A33	INTERNAL WIRE
A12	BEARING 688Z	A34	TORQUE POSITION SPRING
A13	CIRCLIP	A35	DIRECTION POLE
A14	THE THIRD PLANETARY GEAR BRACKET	A36	SWITCH
A15	GEAR RING	A37	HOUSING
A16	WASHER	A38	SCREW
A17	THE THIRD PLANETARY GEAR	A39	HOUSING CIRCLIP
A18	THE SECOND PLANETARY GEAR BRACKET	A40	BATTERY PACK
A19	THE SECOND PLANETARY GEAR	A41	CHARGER
A20	TWO SPEED CHANGE GEAR RING	A998	MOTOR ASSEMBLY
A21	RIVET	A999	GEAR BOX ASSEMBLY
A22	TWO SPEED CHANGE RING		

CD2100Exploded view



CD2100T part list

NO.	DESCRIPTION	NO.	DESCRIPTION
1	LEFT SCREW	28	RIVET
2	KEYLEE CHUCK	29	PLASTIC GEAR RING
3	SCREW	30	THE FIRST PLANETARY GEAR CARRIER
4	PRESS BOARD	31	THE FIRST PLANETARY GEAR
5	TORQURE SPRING	32	INNER GEAR RING
6	TORQUE ADJUSTMENT RING	33	MOTOR GEAR
7	TORQUE ADJUSTMENT NUT	34	WASHER
8	BIG SPRING	35	SCREW
9	SPINDLE	36	PRESS BOARD
10	BEARING 6800Z	37	MOTOR
11	IMPACT BRACKET	38	INNER CABLE
12	IMPACT SPRING	39	SWITCH
13	ACTIVE IMPACT GEAR	40	DIRECTION POLE
14	QUIET IMPACT GEAR	41	LED
15	BEARING 688Z	42	SPRING
16	PIN	43	TWO SPEED CHANGE BUTTON
17	WASHER	44	SPRING
18	IMPACE/DRILL ADJUSTMENT RING	45	HOUSING
19	GEAR BOX	46	SCREW
20	LONG PIN	47	SLING
21	THE THIRD PLANET BRACKET	48	BATTERY PACK
22	GEAR RING	49	LOCK RING
23	WASHER	50	LOCK PIN
24	THE THIRD PLANETARY GEAR	51	TRIANGLE BLOCK
25	THE SECOND PLANETARY GEAR CARRIER	888	GEAR BOX ASSEMBLY
26	THE SECOND PLANETARY GEAR	889	MOTOR ASSEMBLY
27	TWO SPEED CHANGE GEAR RING		



CD1200 CD1680 CD2100 part list

NO.	DESCRIPTION	NO.	DESCRIPTION
1	CHUCK SCREW	23	TWO SPEED CHANGE BUTTON
2	CHUCK	24	SPRING
3	TORQUE ADJUSTMENT RING	25	THE FIRST PLANETARY GEAR CARRIER
4	TORQUE ADJUSTMENT NUT	26	THE FIRST PLANETARY GEAR
5	SPRING	27	INNER GEAR RING
6	WASHER	28	MOTOR GEAR
7	SPINDLE	29	WASHER
8	BEARING 688Z	30	SCREW
9	STEEL BALL	31	MOTOR PRESS BOARD
10	PIN	32	MOTOR
11	GEAR BOX	33	INTERNAL CABLE
12	BEARING 688Z	34	LED PCB
13	CIRCLIP	35	TORQUE SPRING
14	THE THIRD PLANETARY GEAR CARRIER	36	DIRECTION LEVER
15	GEAR RING	37	SWITCH
16	WASHER	38	HOUSING
17	THE THIRD PLANETARY GEAR	39	SCREW
18	THE SECOND PLANETARY GEAR CARRIER	40	STRAP
19	THE SECOND PLANETARY GEAR	41	BATTERY PACK
20	TWO SPEED CHANGE GEAR RING	42	CHARGER
21	PLASTIC GEAR RING	888	GEAR BOX ASSEMBLY
22	SCREW	889	MOTOR ASSEMBLY



POWER ACTION®
Power action tools are your smart choice

WARRANTY CARD

For Dealer

Customer's Name.....Tel:.....

Address.....

Model/Serial No.....

Date of Purchase.....Expiry date.....

Damaged Parts.....

Customer

Dealer's Signature

Date



POWER ACTION®
Power action tools are your smart choice

WARRANTY CARD

For Customer

Customer's Name.....Tel:.....

Address.....

Model/Serial No.....

Date of Purchase.....Expiry date.....

Damaged Parts.....

Customer

Dealer's Signature

Date

