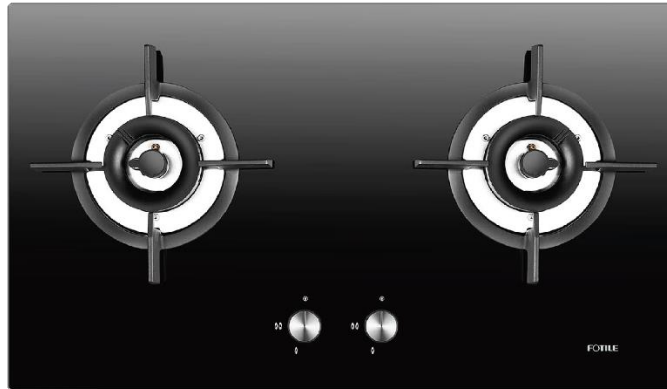


Product Specification Sheet for GHG78211



**PRICE: RM 1,570 (WM)
RM 1,650 (EM)**

A) Specification

Model	GHG78211
Product size (mm)	780(w) X 450(d)
Built-in size (mm)	650-710 (w) X 350-400 (d)
Type	2 burners gas hob
Surface Material	Tempered Glass
Power (kW)	L: 5.0 R:5.0
Other features :	<ul style="list-style-type: none">▪ Heat efficiency $\geq 60\%$ with 5.0kW heat load▪ Burn Tech-II[®] Technology▪ Adjustable Cut-Out Size▪ Instant Ignition▪ Stable Pan Support▪ Cast iron grate & tempered glass surface material

FOTILE

SuperFlame Series Gas Hob

More Than High Flame Power



- Powerful** **5.0 kW** heating load, **60%** heating efficiency | Powerful and fast cooking
- Safe** **12 safety features** for a safer cooking experience
- Stable** **Stable** flames | **Stable** pan support to hold the wok
- Durable** High-Quality **Aluminium Alloy burner**, long lasting and durable against rust
- Fast** **0-second ignition** with Fast Ignition feature
- Gas Saving** **60%** heating efficiency, saves **20%** on gas consumption

6 Core Technologies



Pressure-stable pre-mixing chamber



Large flame hole



US-balanced direct injection chamber



Oxygen supplementation channel



Oxygen Augmenting Fire Cap



Double-stabilized flame ring

B) Super Flame Series supported by FOTILE Burn Tech-II® Technology

6 Core Technologies



1) PRESSURE-STABLE PRE-MIXING CHAMBER

The chamber's large volume stores a greater amount of gas and cancels pressure fluctuation, solving issues related to backfiring



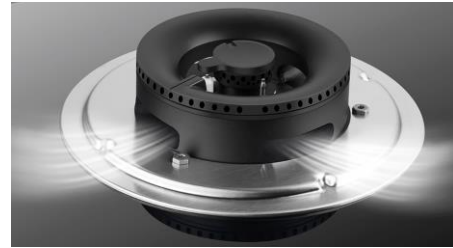
2) LARGE FLAME HOLE

Large flame holes are angled precisely to target wok bottoms, meaning the flames will not be affected by environmental changes such as wind and air pressure.



3) U5-BALANCED DIRECT INJECTION CHAMBER

These five combustion chambers further pressurize the gas in pre-mixing chamber using short, impactful bursts to generate roaring flames.



4) OXYGEN SUPPLEMENTATION CHANNEL

The 11mm high oxygen inlet ensures consistent air supply to keep the flames roaring with strength.



5) OXYGEN AUGMENTING FIRE CAP

Gathering more oxygen to create a 'massive oxygen-concentration zone' at the center of the burner to reach a new level in flame intensity.



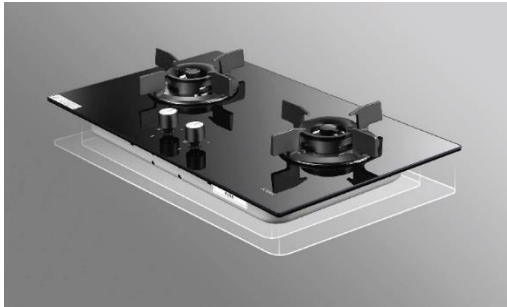
6) DOUBLE-STABILISED FLAME RING

Due to unstable air pressure, normal gas hobs tend to exhibit flame-outs when gas use is at its peak or when bottled liquefied gas is used. FOTILE's new stabilized burner and double-stabilized flame ring designed for the inner and outer rings make these worries a thing of the past.

C) HIGHLIGHT FEATURES

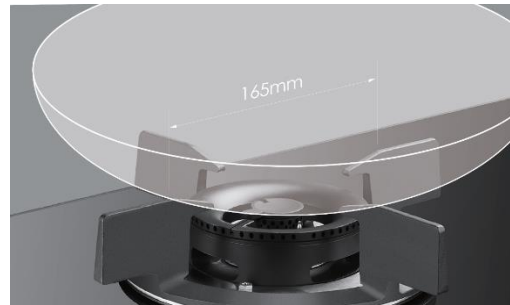
1. Adjustable Cut-Out Size

Customizable range of 650-710mm (w) x 350-400mm (h).



2. Stable Pan Support

Pan support with diameter of 165mm, tailor-made for classic Southeast Asian sharp-bottomed wok.



3. Instant Ignition

0-second ignition with fast ignition feature.



D) INSTALLATION DIAGRAM

Hob
GHG78211

