



Luminaire Property

Luminaire Description: **150W LED Flood Light**

Luminaire Categorie: Modular Series

Lamp Categorie:

Lamp Description:

Number of Lamp: 1

Lamp Lumens(lm): 21626.61

Luminous Length(m):

Luminous Width(m):

Luminous Height(m):

Voltage: 220.5 V

Current: 0.679 A

Power: 146.6 W

Power Factor: 0.978

Test Lab:

Photometric Type: Type C

Manufactory: ADS LED Illumination Sdn Bhd

Photometric Results

CIE Class: Direct

Measurement Flux: 21626.61 lm

Efficiency: 147.5212 lm/W

Central Intensity: 8374.615cd

Max. Intensity: 8519.257cd

Field Angle(10%Imax): Left: -73.4 Right: 74.4

Max.Intensity Angle: C:180.0 G:10.0

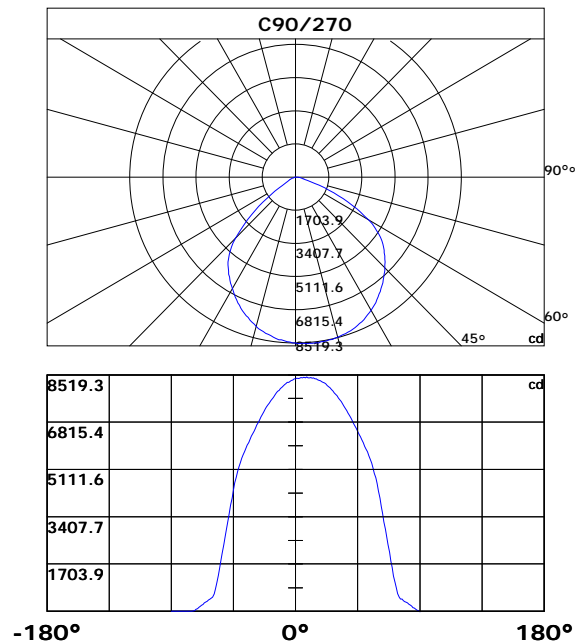
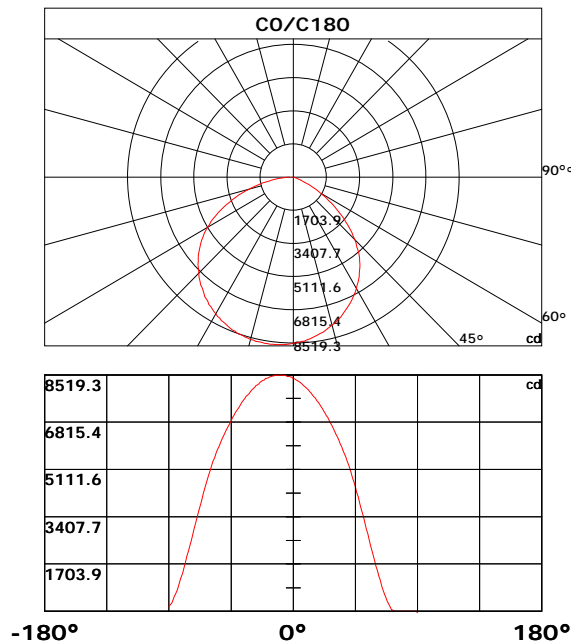
Beam Angle(50%Imax): L: -55.0 R:56.1

Luminaire Efficacy Rating(LER) : 100.00%

Upward Ratio: 0.0%

Downward Ratio: 100.0%

Beamwidth(50%Imax): C0/180=127.04 C90/270=124.4





Light intensity data Unit[cd]

| | | | | | | | | | | |
|--------|--------|--------|--------|--------|--------|--------|--------|--------|--------|--------|
| C\G | G0.0 | G1.0 | G2.0 | G3.0 | G4.0 | G5.0 | G6.0 | G7.0 | G8.0 | G9.0 |
| C0.0 | 8374.6 | 8373.3 | 8340.9 | 8305.6 | 8287.9 | 8246.5 | 8206.0 | 8155.1 | 8109.5 | 8073.7 |
| C30.0 | 8374.6 | 8383.8 | 8389.3 | 8387.0 | 8406.2 | 8403.0 | 8382.8 | 8398.8 | 8407.5 | 8395.7 |
| C60.0 | 8374.6 | 8389.1 | 8405.7 | 8414.6 | 8388.3 | 8500.6 | 8250.5 | 8384.3 | 8452.8 | 8343.2 |
| C90.0 | 8374.6 | 8405.9 | 8392.2 | 8401.2 | 8421.5 | 8413.6 | 8438.3 | 8414.4 | 8447.9 | 8414.9 |
| C120.0 | 8374.6 | 8400.7 | 8415.7 | 8438.6 | 8436.5 | 8424.4 | 8452.3 | 8459.5 | 8455.7 | 8452.3 |
| C150.0 | 8374.6 | 8405.2 | 8425.2 | 8453.4 | 8438.3 | 8451.2 | 8464.7 | 8492.6 | 8482.6 | 8470.2 |
| C180.0 | 8374.6 | 8428.4 | 8442.6 | 8469.7 | 8464.4 | 8483.9 | 8506.4 | 8492.4 | 8516.4 | 8506.6 |
| C210.0 | 8374.6 | 8325.3 | 8325.6 | 8316.1 | 8275.8 | 8261.3 | 8232.8 | 8208.3 | 8150.1 | 8126.1 |
| C240.0 | 8374.6 | 8355.9 | 8328.2 | 8317.4 | 8295.3 | 8286.3 | 8239.4 | 8191.2 | 8165.9 | 8124.8 |
| C270.0 | 8374.6 | 8374.6 | 8331.4 | 8313.4 | 8282.4 | 8249.1 | 8246.8 | 8202.0 | 8166.7 | 8105.3 |
| C300.0 | 8374.6 | 8368.0 | 8320.3 | 8313.7 | 8303.7 | 8262.9 | 8221.0 | 8174.3 | 8159.8 | 8090.3 |
| C330.0 | 8374.6 | 8349.0 | 8327.7 | 8288.4 | 8286.6 | 8238.6 | 8202.8 | 8172.7 | 8120.0 | 8080.8 |
| C360.0 | 8374.6 | 8373.3 | 8340.9 | 8305.6 | 8287.9 | 8246.5 | 8206.0 | 8155.1 | 8109.5 | 8073.7 |
| | | | | | | | | | | |
| C\G | G10.0 | G11.0 | G12.0 | G13.0 | G14.0 | G15.0 | G16.0 | G17.0 | G18.0 | G19.0 |
| C0.0 | 8015.4 | 7979.9 | 7916.9 | 7853.6 | 7790.7 | 7727.1 | 7677.3 | 7599.3 | 7542.2 | 7468.7 |
| C30.0 | 8379.1 | 8376.4 | 8366.1 | 8332.7 | 8326.1 | 8321.1 | 8292.4 | 8253.6 | 8229.9 | 8207.5 |
| C60.0 | 8495.0 | 8429.1 | 8299.8 | 8365.6 | 8356.1 | 8326.9 | 8312.4 | 8297.6 | 8262.9 | 8218.6 |
| C90.0 | 8412.3 | 8419.1 | 8400.7 | 8411.5 | 8371.5 | 8375.4 | 8344.0 | 8318.5 | 8310.3 | 8273.9 |
| C120.0 | 8462.4 | 8458.6 | 8429.9 | 8431.0 | 8431.0 | 8422.6 | 8383.3 | 8373.5 | 8367.7 | 8312.7 |
| C150.0 | 8497.7 | 8473.7 | 8463.4 | 8465.8 | 8475.0 | 8457.6 | 8421.5 | 8427.5 | 8382.2 | 8359.0 |
| C180.0 | 8519.3 | 8497.4 | 8498.7 | 8509.0 | 8481.3 | 8481.0 | 8463.1 | 8449.4 | 8407.5 | 8394.1 |
| C210.0 | 8096.6 | 8055.7 | 7999.6 | 7957.5 | 7915.3 | 7853.4 | 7792.5 | 7746.7 | 7685.0 | 7610.4 |
| C240.0 | 8076.0 | 8054.7 | 7998.6 | 7953.0 | 7880.3 | 7832.0 | 7772.0 | 7695.8 | 7655.5 | 7568.0 |
| C270.0 | 8063.1 | 8027.3 | 7962.2 | 7922.7 | 7871.3 | 7801.7 | 7713.5 | 7654.7 | 7591.2 | 7497.4 |
| C300.0 | 8043.9 | 8008.1 | 7971.2 | 7901.6 | 7826.5 | 7795.2 | 7705.0 | 7635.2 | 7579.6 | 7513.7 |
| C330.0 | 8022.8 | 7997.3 | 7943.7 | 7877.6 | 7826.5 | 7751.4 | 7706.9 | 7617.8 | 7564.8 | 7507.1 |
| C360.0 | 8015.4 | 7979.9 | 7916.9 | 7853.6 | 7790.7 | 7727.1 | 7677.3 | 7599.3 | 7542.2 | 7468.7 |
| | | | | | | | | | | |
| C\G | G20.0 | G21.0 | G22.0 | G23.0 | G24.0 | G25.0 | G26.0 | G27.0 | G28.0 | G29.0 |
| C0.0 | 7387.5 | 7297.6 | 7214.1 | 7147.2 | 7056.5 | 6976.4 | 6882.3 | 6787.5 | 6685.5 | 6593.5 |
| C30.0 | 8149.5 | 8125.1 | 8084.0 | 8061.5 | 8007.8 | 7961.7 | 7928.5 | 7849.4 | 7805.9 | 7744.8 |
| C60.0 | 8201.2 | 8169.1 | 8131.9 | 8089.2 | 8045.5 | 8003.3 | 7936.6 | 7886.1 | 7839.7 | 7778.3 |
| C90.0 | 8247.1 | 8224.9 | 8186.5 | 8134.3 | 8083.7 | 8056.3 | 7998.6 | 7940.1 | 7871.8 | 7816.5 |
| C120.0 | 8296.6 | 8273.7 | 8241.0 | 8188.5 | 8149.8 | 8122.4 | 8054.2 | 8004.1 | 7961.9 | 7912.7 |
| C150.0 | 8348.5 | 8312.1 | 8298.7 | 8238.1 | 8221.0 | 8169.6 | 8119.0 | 8095.5 | 8039.7 | 8008.8 |
| C180.0 | 8388.8 | 8334.3 | 8322.7 | 8292.4 | 8244.7 | 8189.6 | 8154.8 | 8132.7 | 8062.6 | 8035.7 |
| C210.0 | 7536.4 | 7480.3 | 7382.0 | 7320.3 | 7245.5 | 7176.9 | 7090.3 | 6982.8 | 6906.3 | 6822.5 |
| C240.0 | 7512.7 | 7415.2 | 7332.9 | 7270.0 | 7177.2 | 7092.1 | 6983.8 | 6909.2 | 6799.1 | 6695.3 |
| C270.0 | 7437.6 | 7366.4 | 7273.9 | 7188.5 | 7083.4 | 7008.1 | 6894.5 | 6805.9 | 6717.7 | 6604.6 |
| C300.0 | 7436.0 | 7329.0 | 7263.4 | 7168.0 | 7090.3 | 6992.8 | 6893.2 | 6802.5 | 6669.7 | 6570.1 |
| C330.0 | 7416.8 | 7340.0 | 7258.7 | 7183.5 | 7079.7 | 7005.9 | 6920.5 | 6811.2 | 6715.8 | 6604.9 |
| C360.0 | 7387.5 | 7297.6 | 7214.1 | 7147.2 | 7056.5 | 6976.4 | 6882.3 | 6787.5 | 6685.5 | 6593.5 |



Light intensity data Unit[cd]

| C\G | G30.0 | G31.0 | G32.0 | G33.0 | G34.0 | G35.0 | G36.0 | G37.0 | G38.0 | G39.0 |
|--------|--------|--------|--------|--------|--------|--------|--------|--------|--------|--------|
| C0.0 | 6488.7 | 6377.7 | 6275.5 | 6170.4 | 6051.8 | 5928.5 | 5809.6 | 5690.8 | 5560.1 | 5418.0 |
| C30.0 | 7705.3 | 7631.2 | 7556.7 | 7507.9 | 7409.4 | 7357.4 | 7297.4 | 7211.8 | 7119.5 | 7023.3 |
| C60.0 | 7709.5 | 7646.8 | 7593.0 | 7495.0 | 7428.6 | 7355.9 | 7281.0 | 7189.1 | 7096.1 | 7020.2 |
| C90.0 | 7763.0 | 7683.1 | 7627.3 | 7558.2 | 7471.3 | 7389.3 | 7306.6 | 7232.3 | 7141.6 | 7054.4 |
| C120.0 | 7841.0 | 7770.9 | 7728.2 | 7626.2 | 7568.3 | 7505.3 | 7429.1 | 7341.4 | 7250.5 | 7180.1 |
| C150.0 | 7926.3 | 7877.9 | 7817.0 | 7745.1 | 7704.5 | 7622.8 | 7578.8 | 7477.1 | 7398.3 | 7326.9 |
| C180.0 | 7966.4 | 7921.6 | 7845.2 | 7792.0 | 7749.3 | 7661.0 | 7604.6 | 7550.4 | 7460.8 | 7367.5 |
| C210.0 | 6716.1 | 6614.6 | 6508.7 | 6417.3 | 6276.6 | 6179.8 | 6044.4 | 5932.4 | 5822.8 | 5701.3 |
| C240.0 | 6612.0 | 6494.5 | 6388.5 | 6266.8 | 6166.4 | 6064.2 | 5938.5 | 5845.5 | 5720.8 | 5595.9 |
| C270.0 | 6495.0 | 6392.0 | 6309.0 | 6194.1 | 6086.0 | 5988.3 | 5871.0 | 5757.5 | 5629.4 | 5510.3 |
| C300.0 | 6471.3 | 6352.2 | 6255.8 | 6129.0 | 6029.1 | 5889.7 | 5772.7 | 5659.9 | 5535.0 | 5430.7 |
| C330.0 | 6505.8 | 6392.7 | 6280.2 | 6179.8 | 6050.5 | 5927.7 | 5794.9 | 5677.6 | 5547.2 | 5406.5 |
| C360.0 | 6488.7 | 6377.7 | 6275.5 | 6170.4 | 6051.8 | 5928.5 | 5809.6 | 5690.8 | 5560.1 | 5418.0 |
| | | | | | | | | | | |
| C\G | G40.0 | G41.0 | G42.0 | G43.0 | G44.0 | G45.0 | G46.0 | G47.0 | G48.0 | G49.0 |
| C0.0 | 5295.5 | 5138.2 | 4970.9 | 4794.6 | 4640.7 | 4472.6 | 4282.6 | 4115.8 | 3918.7 | 3731.3 |
| C30.0 | 6959.0 | 6837.6 | 6743.2 | 6647.8 | 6571.2 | 6463.1 | 6333.7 | 6254.7 | 6112.9 | 5997.5 |
| C60.0 | 6924.5 | 6812.8 | 6721.6 | 6619.4 | 6526.6 | 6397.5 | 6311.9 | 6169.3 | 6068.6 | 5959.8 |
| C90.0 | 6973.5 | 6879.2 | 6776.9 | 6674.7 | 6590.1 | 6485.0 | 6373.0 | 6285.5 | 6181.2 | 6069.2 |
| C120.0 | 7095.0 | 6997.5 | 6901.6 | 6811.2 | 6716.8 | 6591.5 | 6512.4 | 6372.5 | 6276.0 | 6179.3 |
| C150.0 | 7236.2 | 7163.5 | 7075.8 | 6978.8 | 6879.4 | 6780.7 | 6691.1 | 6578.3 | 6483.2 | 6376.2 |
| C180.0 | 7291.1 | 7237.0 | 7139.0 | 7052.3 | 6978.0 | 6865.2 | 6766.6 | 6669.4 | 6587.2 | 6467.3 |
| C210.0 | 5594.9 | 5428.0 | 5308.4 | 5166.1 | 5021.7 | 4902.6 | 4731.1 | 4597.8 | 4403.8 | 4245.2 |
| C240.0 | 5471.6 | 5377.7 | 5227.0 | 5136.6 | 4975.1 | 4695.5 | 4606.2 | 4417.8 | 4221.2 | 3987.2 |
| C270.0 | 5365.1 | 5187.5 | 5029.4 | 4834.9 | 4625.7 | 4363.5 | 4077.3 | 3818.8 | 3535.8 | 3269.2 |
| C300.0 | 5290.0 | 5183.0 | 5018.6 | 4874.2 | 4713.2 | 4537.2 | 4356.1 | 4131.6 | 3913.2 | 3608.3 |
| C330.0 | 5285.5 | 5133.7 | 4982.7 | 4816.2 | 4676.0 | 4522.4 | 4330.6 | 4169.0 | 3983.5 | 3807.0 |
| C360.0 | 5295.5 | 5138.2 | 4970.9 | 4794.6 | 4640.7 | 4472.6 | 4282.6 | 4115.8 | 3918.7 | 3731.3 |
| | | | | | | | | | | |
| C\G | G50.0 | G51.0 | G52.0 | G53.0 | G54.0 | G55.0 | G56.0 | G57.0 | G58.0 | G59.0 |
| C0.0 | 3527.1 | 3366.1 | 3164.3 | 2962.7 | 2781.4 | 2577.4 | 2380.9 | 2166.7 | 2000.6 | 1820.9 |
| C30.0 | 5885.8 | 5782.7 | 5653.4 | 5505.5 | 5409.6 | 5244.6 | 5103.2 | 4968.5 | 4838.6 | 4685.0 |
| C60.0 | 5851.5 | 5745.1 | 5597.5 | 5497.6 | 5354.3 | 5238.4 | 5130.5 | 4983.5 | 4855.5 | 4663.1 |
| C90.0 | 5943.2 | 5853.6 | 5741.1 | 5609.1 | 5490.8 | 5337.7 | 5177.2 | 4975.9 | 4813.1 | 4605.1 |
| C120.0 | 6065.0 | 5968.8 | 5829.6 | 5731.1 | 5589.6 | 5480.0 | 5364.0 | 5232.8 | 5113.7 | 4920.5 |
| C150.0 | 6254.2 | 6132.1 | 6012.8 | 5908.2 | 5775.9 | 5649.9 | 5533.0 | 5389.3 | 5251.5 | 5120.3 |
| C180.0 | 6369.8 | 6277.9 | 6150.6 | 6027.3 | 5915.0 | 5811.2 | 5673.4 | 5532.7 | 5416.4 | 5254.9 |
| C210.0 | 4067.8 | 3885.0 | 3748.7 | 3533.2 | 3367.5 | 3157.4 | 2996.4 | 2823.6 | 2597.8 | 2441.5 |
| C240.0 | 3713.4 | 3439.9 | 3182.5 | 2891.5 | 2630.9 | 2326.3 | 2074.4 | 1799.0 | 1522.6 | 1282.0 |
| C270.0 | 2941.3 | 2674.7 | 2401.9 | 2106.8 | 1839.9 | 1560.6 | 1294.7 | 1023.0 | 811.1 | 623.0 |
| C300.0 | 3326.1 | 3079.7 | 2801.4 | 2483.4 | 2196.2 | 1954.3 | 1656.5 | 1394.1 | 1142.6 | 895.2 |
| C330.0 | 3606.2 | 3434.9 | 3263.1 | 3066.2 | 2894.4 | 2684.2 | 2486.5 | 2258.6 | 2069.7 | 1869.4 |
| C360.0 | 3527.1 | 3366.1 | 3164.3 | 2962.7 | 2781.4 | 2577.4 | 2380.9 | 2166.7 | 2000.6 | 1820.9 |



Light intensity data Unit[cd]

| | | | | | | | | | | |
|--------|--------|--------|--------|--------|--------|--------|--------|--------|--------|--------|
| C\G | G60.0 | G61.0 | G62.0 | G63.0 | G64.0 | G65.0 | G66.0 | G67.0 | G68.0 | G69.0 |
| C0.0 | 1626.4 | 1453.9 | 1267.6 | 1111.3 | 912.6 | 777.7 | 611.4 | 500.5 | 376.4 | 256.2 |
| C30.0 | 4496.3 | 4364.6 | 4150.8 | 3980.9 | 3815.9 | 3654.4 | 3471.0 | 3253.8 | 3105.0 | 2898.7 |
| C60.0 | 4505.5 | 4298.7 | 4109.5 | 3899.7 | 3619.9 | 3359.2 | 3060.2 | 2814.3 | 2516.0 | 2222.8 |
| C90.0 | 4337.4 | 4068.1 | 3773.2 | 3535.3 | 3218.5 | 2952.4 | 2682.9 | 2397.4 | 2127.4 | 1805.9 |
| C120.0 | 4770.6 | 4563.5 | 4384.3 | 4188.0 | 3914.5 | 3667.9 | 3356.9 | 3116.6 | 2819.3 | 2541.1 |
| C150.0 | 4987.2 | 4835.9 | 4676.6 | 4535.8 | 4365.3 | 4184.1 | 4014.1 | 3851.7 | 3676.3 | 3478.6 |
| C180.0 | 5096.3 | 4927.1 | 4775.6 | 4611.7 | 4422.8 | 4259.1 | 4064.9 | 3872.1 | 3687.3 | 3511.1 |
| C210.0 | 2201.1 | 2010.4 | 1769.3 | 1546.6 | 1323.2 | 1103.7 | 917.1 | 700.0 | 537.1 | 381.6 |
| C240.0 | 999.6 | 778.7 | 575.0 | 449.9 | 376.6 | 363.7 | 324.4 | 278.1 | 258.1 | 215.6 |
| C270.0 | 513.6 | 477.3 | 443.9 | 404.8 | 365.6 | 339.2 | 297.6 | 251.8 | 225.7 | 179.5 |
| C300.0 | 657.8 | 482.1 | 392.5 | 371.1 | 325.8 | 313.4 | 269.9 | 221.4 | 190.1 | 155.5 |
| C330.0 | 1604.3 | 1378.0 | 1135.0 | 931.6 | 716.3 | 550.6 | 416.4 | 273.1 | 178.5 | 126.8 |
| C360.0 | 1626.4 | 1453.9 | 1267.6 | 1111.3 | 912.6 | 777.7 | 611.4 | 500.5 | 376.4 | 256.2 |
| | | | | | | | | | | |
| C\G | G70.0 | G71.0 | G72.0 | G73.0 | G74.0 | G75.0 | G76.0 | G77.0 | G78.0 | G79.0 |
| C0.0 | 175.0 | 65.4 | 35.6 | 10.9 | 0.0 | 0.0 | 0.0 | 0.0 | 0.0 | 0.0 |
| C30.0 | 2714.5 | 2519.5 | 2338.7 | 2142.9 | 1900.0 | 1712.4 | 1459.9 | 1224.9 | 1023.8 | 820.9 |
| C60.0 | 2001.9 | 1702.6 | 1448.3 | 1162.4 | 935.8 | 708.1 | 511.3 | 423.3 | 351.9 | 333.4 |
| C90.0 | 1583.2 | 1273.9 | 1044.6 | 840.1 | 634.9 | 516.3 | 445.4 | 439.6 | 387.2 | 348.7 |
| C120.0 | 2297.1 | 2013.5 | 1768.5 | 1456.2 | 1232.8 | 958.2 | 739.0 | 574.5 | 433.6 | 390.6 |
| C150.0 | 3307.1 | 3108.9 | 2916.1 | 2715.3 | 2500.8 | 2289.7 | 2049.9 | 1818.3 | 1566.6 | 1341.1 |
| C180.0 | 3326.8 | 3104.4 | 2930.8 | 2725.8 | 2538.2 | 2335.3 | 2158.4 | 1975.3 | 1763.2 | 1596.2 |
| C210.0 | 253.6 | 171.6 | 118.9 | 84.4 | 65.4 | 28.5 | 18.8 | 0.0 | 0.0 | 0.0 |
| C240.0 | 176.1 | 132.9 | 112.4 | 81.0 | 39.6 | 13.5 | 0.0 | 0.0 | 0.0 | 0.0 |
| C270.0 | 139.5 | 100.2 | 73.9 | 28.0 | 8.5 | 0.0 | 0.0 | 0.0 | 0.0 | 0.0 |
| C300.0 | 121.0 | 80.5 | 57.3 | 38.3 | 0.6 | 0.0 | 0.0 | 0.0 | 0.0 | 0.0 |
| C330.0 | 102.8 | 54.6 | 34.9 | 0.0 | 0.0 | 0.0 | 0.0 | 0.0 | 0.0 | 0.0 |
| C360.0 | 175.0 | 65.4 | 35.6 | 10.9 | 0.0 | 0.0 | 0.0 | 0.0 | 0.0 | 0.0 |
| | | | | | | | | | | |
| C\G | G80.0 | G81.0 | G82.0 | G83.0 | G84.0 | G85.0 | G86.0 | G87.0 | G88.0 | G89.0 |
| C0.0 | 0.0 | 0.0 | 0.0 | 0.0 | 0.0 | 0.0 | 0.0 | 0.0 | 0.0 | 0.0 |
| C30.0 | 635.7 | 453.9 | 335.0 | 225.7 | 121.8 | 113.9 | 57.8 | 42.3 | 28.3 | 0.0 |
| C60.0 | 279.1 | 250.2 | 229.1 | 181.9 | 157.7 | 127.9 | 83.1 | 56.5 | 21.4 | 0.0 |
| C90.0 | 323.4 | 306.5 | 257.5 | 219.6 | 189.0 | 128.9 | 121.0 | 75.7 | 43.8 | 21.7 |
| C120.0 | 337.4 | 312.1 | 283.9 | 244.1 | 208.3 | 188.2 | 143.9 | 117.9 | 68.9 | 39.9 |
| C150.0 | 1121.6 | 896.5 | 725.8 | 548.4 | 385.8 | 236.7 | 165.6 | 113.9 | 102.1 | 80.3 |
| C180.0 | 1366.6 | 1243.3 | 1104.2 | 909.4 | 748.4 | 648.8 | 527.1 | 402.7 | 293.9 | 238.0 |
| C210.0 | 0.0 | 0.0 | 0.0 | 0.0 | 0.0 | 0.0 | 0.0 | 0.0 | 0.0 | 0.0 |
| C240.0 | 0.0 | 0.0 | 0.0 | 0.0 | 0.0 | 0.0 | 0.0 | 0.0 | 0.0 | 0.0 |
| C270.0 | 0.0 | 0.0 | 0.0 | 0.0 | 0.0 | 0.0 | 0.0 | 0.0 | 0.0 | 0.0 |
| C300.0 | 0.0 | 0.0 | 0.0 | 0.0 | 0.0 | 0.0 | 0.0 | 0.0 | 0.0 | 0.0 |
| C330.0 | 0.0 | 0.0 | 0.0 | 0.0 | 0.0 | 0.0 | 0.0 | 0.0 | 0.0 | 0.0 |
| C360.0 | 0.0 | 0.0 | 0.0 | 0.0 | 0.0 | 0.0 | 0.0 | 0.0 | 0.0 | 0.0 |



Light intensity data Unit[cd]

| | | | | | | | | | | |
|--------|-------|--|--|--|--|--|--|--|--|--|
| C\G | G90.0 | | | | | | | | | |
| C0.0 | -51.3 | | | | | | | | | |
| C30.0 | -21.8 | | | | | | | | | |
| C60.0 | 0.0 | | | | | | | | | |
| C90.0 | -15.7 | | | | | | | | | |
| C120.0 | 25.1 | | | | | | | | | |
| C150.0 | 58.6 | | | | | | | | | |
| C180.0 | 169.5 | | | | | | | | | |
| C210.0 | 0.0 | | | | | | | | | |
| C240.0 | -60.0 | | | | | | | | | |
| C270.0 | 0.0 | | | | | | | | | |
| C300.0 | -70.8 | | | | | | | | | |
| C330.0 | 0.0 | | | | | | | | | |
| C360.0 | -51.3 | | | | | | | | | |



Zonal Luminous Flux Data

| Gamma [°] | I _{mean} [cd] | Zonal Flux [lm] | Sum Flux [lm] | Zonal Flux [%] | Sum Flux [%] |
|-----------|------------------------|-----------------|---------------|----------------|--------------|
| 0.0 | 8374.62 | 0.00 | 0.00 | 0.00 | 0.00 |
| 0.0-1.0 | 8379.93 | 8.02 | 8.02 | 0.04 | 0.04 |
| 1.0-2.0 | 8370.39 | 24.04 | 32.06 | 0.11 | 0.15 |
| 2.0-3.0 | 8368.26 | 40.03 | 72.09 | 0.19 | 0.33 |
| 3.0-4.0 | 8357.24 | 55.99 | 128.08 | 0.26 | 0.59 |
| 4.0-5.0 | 8351.79 | 71.88 | 199.96 | 0.33 | 0.92 |
| 5.0-6.0 | 8320.31 | 87.62 | 287.58 | 0.41 | 1.33 |
| 6.0-7.0 | 8312.15 | 103.24 | 390.81 | 0.48 | 1.81 |
| 7.0-8.0 | 8302.92 | 118.91 | 509.72 | 0.55 | 2.36 |
| 8.0-9.0 | 8265.32 | 134.28 | 644.00 | 0.62 | 2.98 |
| 9.0-10.0 | 8256.96 | 149.52 | 793.52 | 0.69 | 3.67 |
| 10.0-11.0 | 8231.44 | 164.75 | 958.27 | 0.76 | 4.43 |
| 11.0-12.0 | 8187.56 | 179.48 | 1137.76 | 0.83 | 5.26 |
| 12.0-13.0 | 8165.12 | 194.07 | 1331.82 | 0.90 | 6.16 |
| 13.0-14.0 | 8129.28 | 208.57 | 1540.39 | 0.96 | 7.12 |
| 14.0-15.0 | 8095.45 | 222.74 | 1763.13 | 1.03 | 8.15 |
| 15.0-16.0 | 8048.66 | 236.56 | 1999.69 | 1.09 | 9.25 |
| 16.0-17.0 | 8005.81 | 250.01 | 2249.70 | 1.16 | 10.40 |
| 17.0-18.0 | 7964.90 | 263.32 | 2513.02 | 1.22 | 11.62 |
| 18.0-19.0 | 7910.92 | 276.21 | 2789.23 | 1.28 | 12.90 |
| 19.0-20.0 | 7863.22 | 288.71 | 3077.94 | 1.33 | 14.23 |
| 20.0-21.0 | 7805.64 | 300.87 | 3378.81 | 1.39 | 15.62 |
| 21.0-22.0 | 7749.14 | 312.58 | 3691.39 | 1.45 | 17.07 |
| 22.0-23.0 | 7690.13 | 323.96 | 4015.35 | 1.50 | 18.57 |
| 23.0-24.0 | 7623.75 | 334.82 | 4350.17 | 1.55 | 20.11 |
| 24.0-25.0 | 7562.92 | 345.31 | 4695.48 | 1.60 | 21.71 |
| 25.0-26.0 | 7488.01 | 355.28 | 5050.75 | 1.64 | 23.35 |
| 26.0-27.0 | 7417.24 | 364.66 | 5415.42 | 1.69 | 25.04 |
| 27.0-28.0 | 7339.65 | 373.61 | 5789.03 | 1.73 | 26.77 |
| 28.0-29.0 | 7265.65 | 382.12 | 6171.14 | 1.77 | 28.53 |
| 29.0-30.0 | 7183.36 | 390.12 | 6561.26 | 1.80 | 30.34 |
| 30.0-31.0 | 7096.27 | 397.38 | 6958.65 | 1.84 | 32.18 |
| 31.0-32.0 | 7015.43 | 404.28 | 7362.93 | 1.87 | 34.05 |
| 32.0-33.0 | 6923.48 | 410.65 | 7773.57 | 1.90 | 35.94 |
| 33.0-34.0 | 6832.63 | 416.30 | 8189.88 | 1.92 | 37.87 |
| 34.0-35.0 | 6739.16 | 421.49 | 8611.37 | 1.95 | 39.82 |
| 35.0-36.0 | 6644.05 | 426.12 | 9037.49 | 1.97 | 41.79 |
| 36.0-37.0 | 6547.13 | 430.22 | 9467.71 | 1.99 | 43.78 |
| 37.0-38.0 | 6440.16 | 433.50 | 9901.21 | 2.00 | 45.78 |
| 38.0-39.0 | 6336.26 | 436.09 | 10337.31 | 2.02 | 47.80 |
| 39.0-40.0 | 6231.83 | 438.33 | 10775.64 | 2.03 | 49.83 |

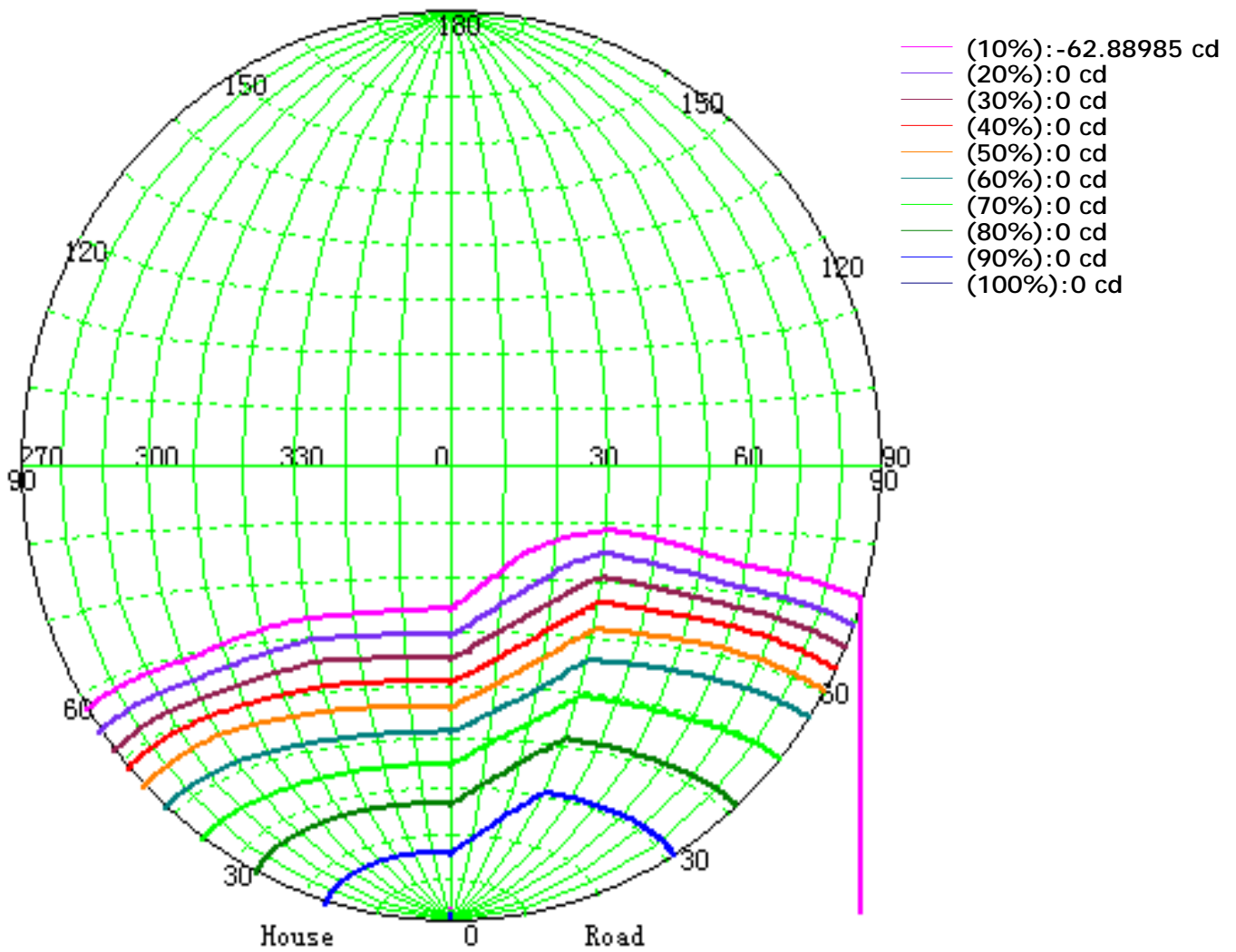


Zonal Luminous Flux Data

| Gamma [°] | I _{mean} [cd] | Zonal Flux [lm] | Sum Flux [lm] | Zonal Flux [%] | Sum Flux [%] |
|-----------|------------------------|-----------------|---------------|----------------|--------------|
| 40.0-41.0 | 6114.65 | 439.65 | 11215.29 | 2.03 | 51.86 |
| 41.0-42.0 | 5991.27 | 439.83 | 11655.12 | 2.03 | 53.89 |
| 42.0-43.0 | 5867.24 | 439.27 | 12094.39 | 2.03 | 55.92 |
| 43.0-44.0 | 5742.89 | 438.20 | 12532.59 | 2.03 | 57.95 |
| 44.0-45.0 | 5589.72 | 435.53 | 12968.12 | 2.01 | 59.96 |
| 45.0-46.0 | 5447.71 | 431.65 | 13399.77 | 2.00 | 61.96 |
| 46.0-47.0 | 5298.37 | 427.40 | 13827.17 | 1.98 | 63.94 |
| 47.0-48.0 | 5140.44 | 421.99 | 14249.16 | 1.95 | 65.89 |
| 48.0-49.0 | 4974.78 | 415.39 | 14664.55 | 1.92 | 67.81 |
| 49.0-50.0 | 4795.95 | 407.38 | 15071.92 | 1.88 | 69.69 |
| 50.0-51.0 | 4636.71 | 399.08 | 15471.01 | 1.85 | 71.54 |
| 51.0-52.0 | 4462.24 | 390.44 | 15861.45 | 1.81 | 73.34 |
| 52.0-53.0 | 4276.88 | 380.15 | 16241.60 | 1.76 | 75.10 |
| 53.0-54.0 | 4103.79 | 369.39 | 16610.99 | 1.71 | 76.81 |
| 54.0-55.0 | 3918.50 | 358.10 | 16969.09 | 1.66 | 78.46 |
| 55.0-56.0 | 3739.22 | 346.03 | 17315.12 | 1.60 | 80.06 |
| 56.0-57.0 | 3545.63 | 333.08 | 17648.20 | 1.54 | 81.60 |
| 57.0-58.0 | 3369.44 | 319.78 | 17967.97 | 1.48 | 83.08 |
| 58.0-59.0 | 3181.75 | 306.27 | 18274.25 | 1.42 | 84.50 |
| 59.0-60.0 | 2983.02 | 291.25 | 18565.49 | 1.35 | 85.85 |
| 60.0-61.0 | 2803.18 | 276.13 | 18841.62 | 1.28 | 87.12 |
| 61.0-62.0 | 2621.10 | 261.37 | 19103.00 | 1.21 | 88.33 |
| 62.0-63.0 | 2463.90 | 247.31 | 19350.30 | 1.14 | 89.47 |
| 63.0-64.0 | 2281.42 | 232.85 | 19583.16 | 1.08 | 90.55 |
| 64.0-65.0 | 2127.11 | 218.17 | 19801.33 | 1.01 | 91.56 |
| 65.0-66.0 | 1957.24 | 203.78 | 20005.11 | 0.94 | 92.50 |
| 66.0-67.0 | 1794.24 | 188.63 | 20193.75 | 0.87 | 93.37 |
| 67.0-68.0 | 1641.42 | 174.04 | 20367.79 | 0.80 | 94.18 |
| 68.0-69.0 | 1481.13 | 159.30 | 20527.09 | 0.74 | 94.92 |
| 69.0-70.0 | 1349.89 | 145.40 | 20672.48 | 0.67 | 95.59 |
| 70.0-71.0 | 1194.01 | 131.48 | 20803.97 | 0.61 | 96.20 |
| 71.0-72.0 | 1073.33 | 117.90 | 20921.86 | 0.55 | 96.74 |
| 72.0-73.0 | 940.45 | 105.31 | 21027.17 | 0.49 | 97.23 |
| 73.0-74.0 | 821.38 | 92.62 | 21119.80 | 0.43 | 97.66 |
| 74.0-75.0 | 713.50 | 81.10 | 21200.89 | 0.37 | 98.03 |
| 75.0-76.0 | 615.22 | 70.53 | 21271.43 | 0.33 | 98.36 |
| 76.0-77.0 | 537.99 | 61.48 | 21332.91 | 0.28 | 98.64 |
| 77.0-78.0 | 460.52 | 53.45 | 21386.36 | 0.25 | 98.89 |
| 78.0-79.0 | 402.57 | 46.37 | 21432.74 | 0.21 | 99.10 |
| 79.0-80.0 | 338.65 | 39.96 | 21472.70 | 0.18 | 99.29 |
| 80.0-81.0 | 288.54 | 33.92 | 21506.62 | 0.16 | 99.45 |

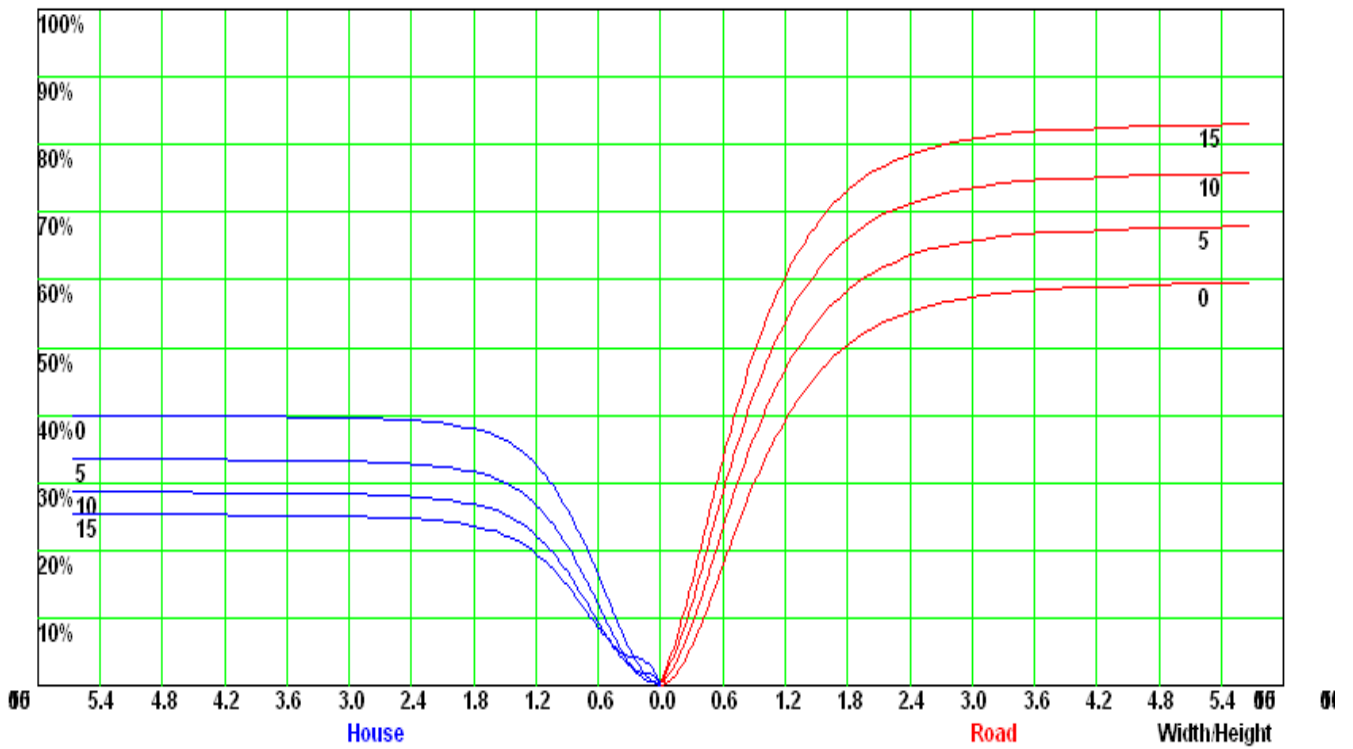


Iso-Candela [cd]



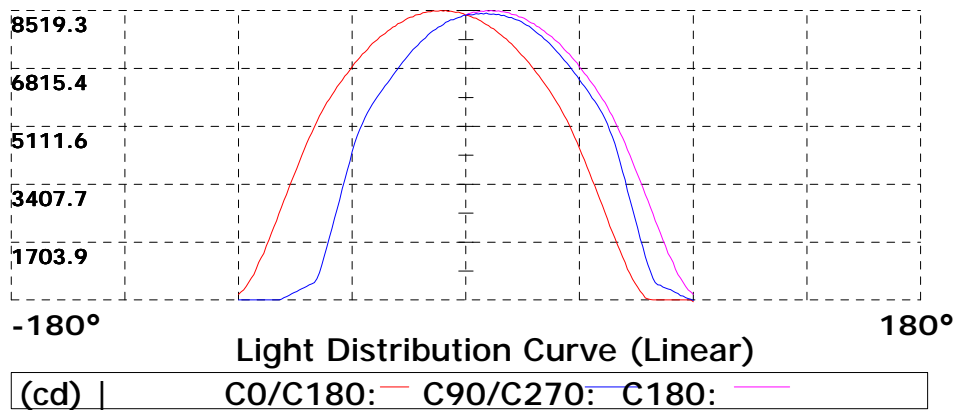
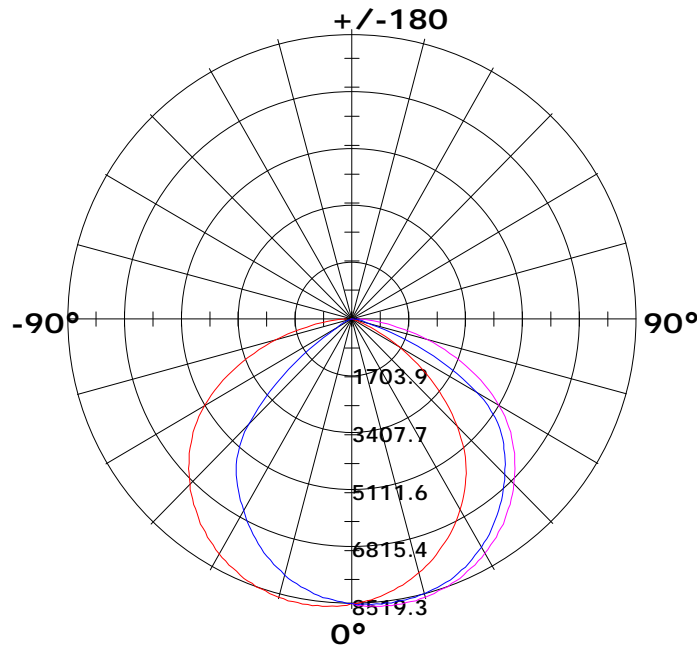


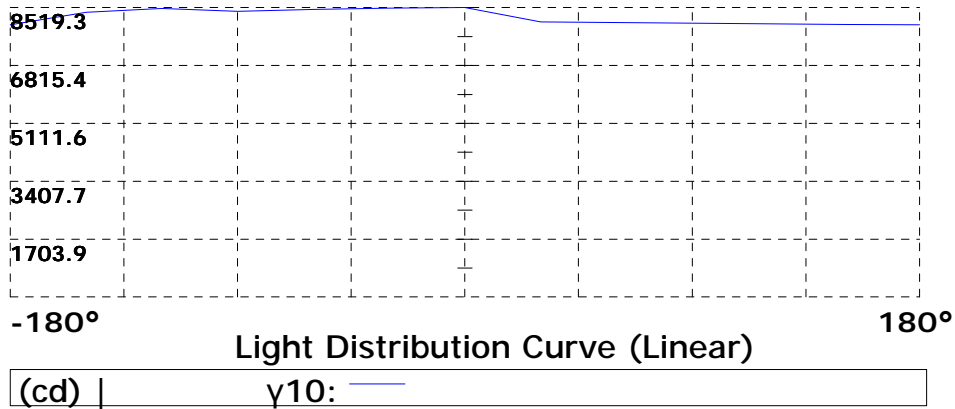
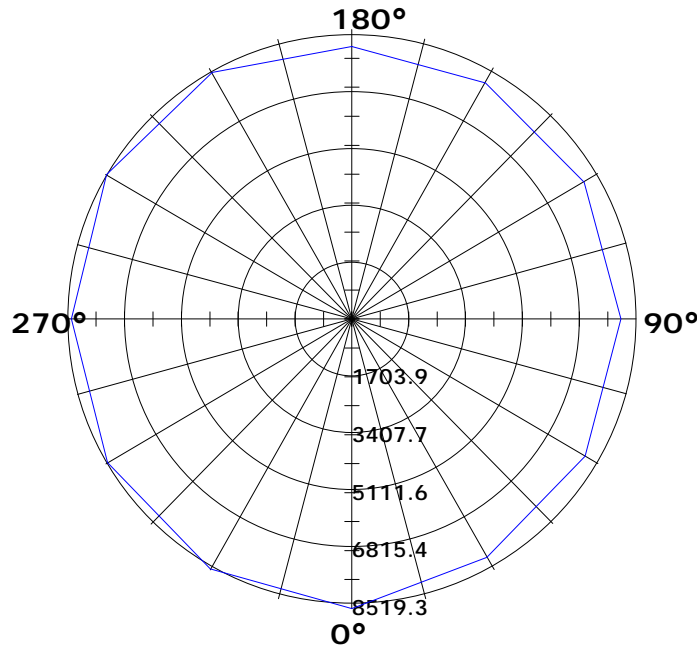
Coefficient Utilization Curve





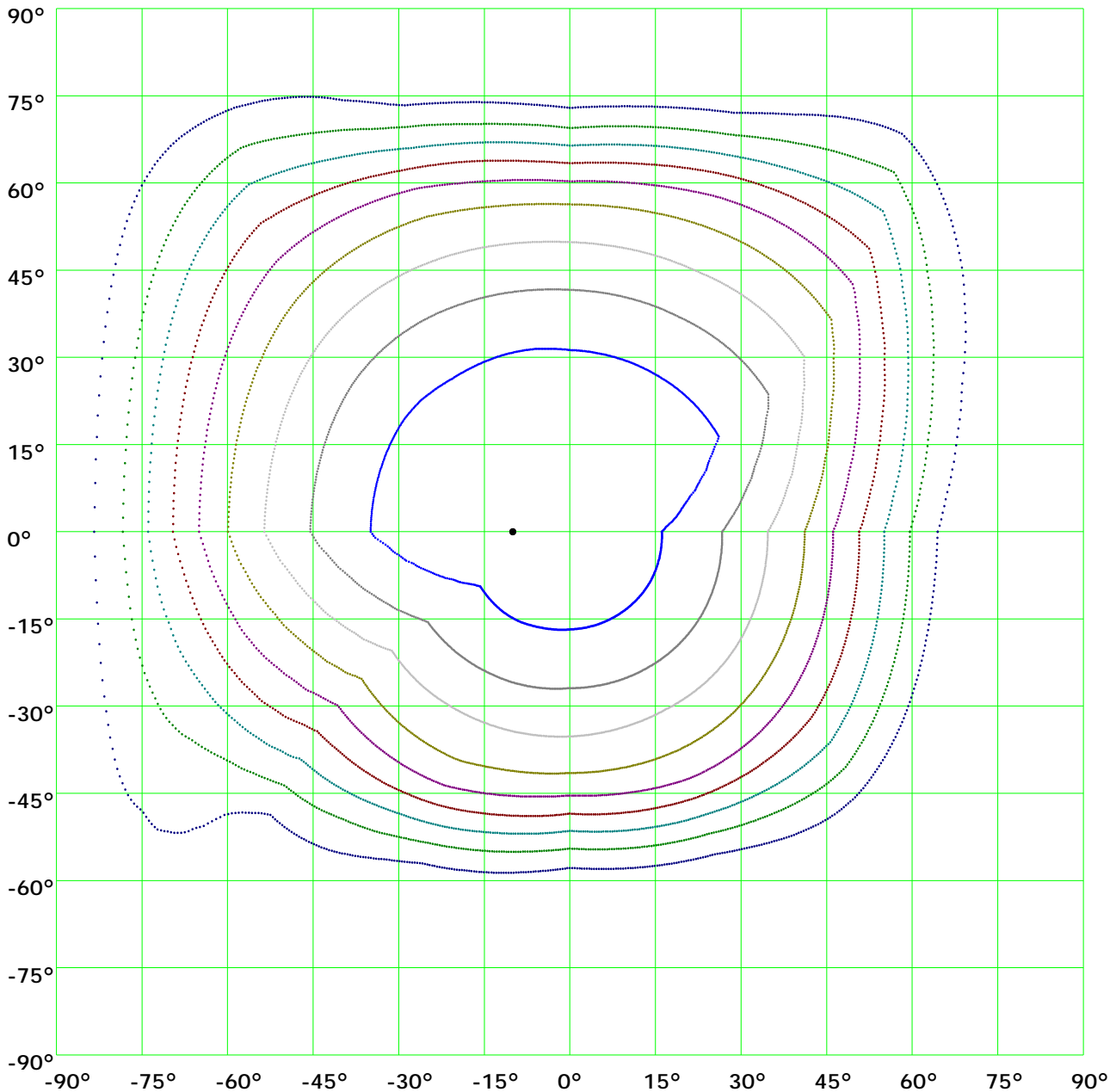
Light Distribution Curve [Unit: cd]







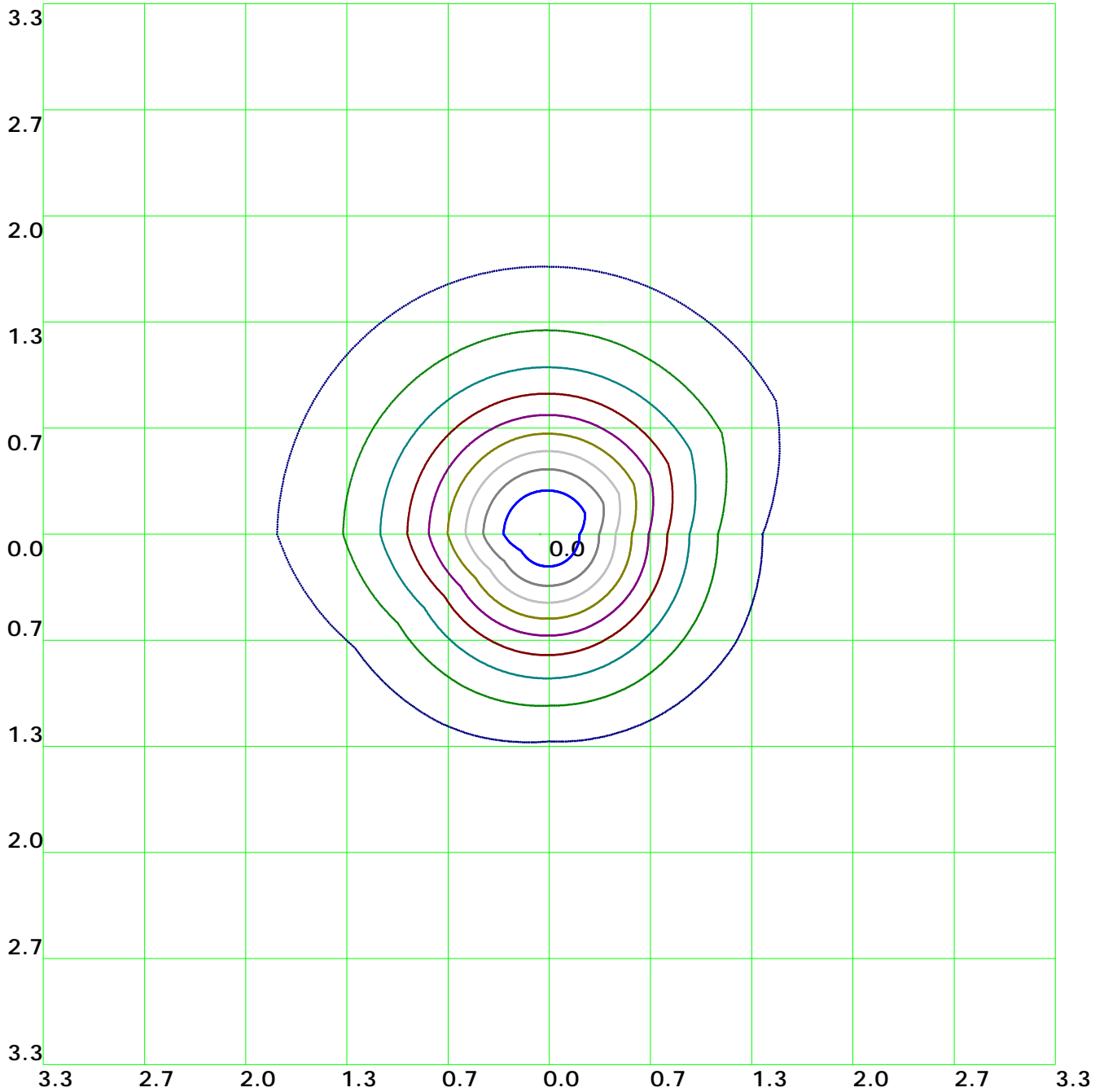
Isocandela(rectangle)



| | | | |
|-------------------|--------------------|-------------------|-------------------|
| — (10%): 851.9cd | — (20%): 1703.9cd | — (30%): 2555.8cd | — (40%): 3407.7cd |
| — (50%): 4259.6cd | — (60%): 5111.6cd | — (70%): 5963.5cd | — (80%): 6815.4cd |
| — (90%): 7667.3cd | — (100%): 8519.3cd | | |



Isolx curve

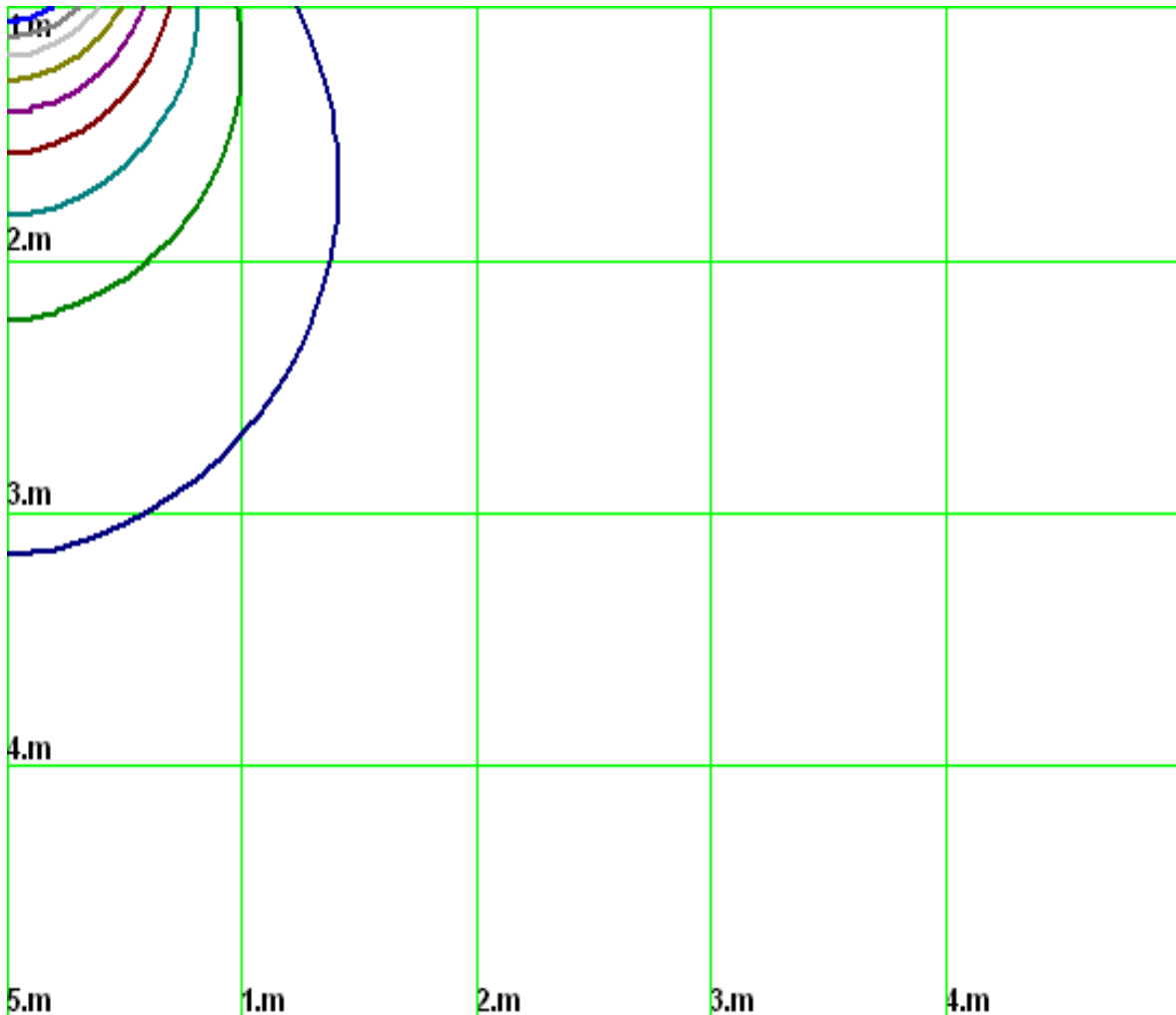


Height: 1 m

- | | | | |
|-------------------|--------------------|-------------------|-------------------|
| — (10%): 851.9lx | — (20%): 1703.9lx | — (30%): 2555.8lx | — (40%): 3407.7lx |
| — (50%): 4259.6lx | — (60%): 5111.6lx | — (70%): 5963.5lx | — (80%): 6815.4lx |
| — (90%): 7667.3lx | — (100%): 8510.7lx | | |



Space Isolx Curve



- (10%): 851.9lx — (20%): 1703.9lx — (30%): 2555.8lx — (40%): 3407.7lx
- (50%): 4259.6lx — (60%): 5111.6lx — (70%): 5963.5lx — (80%): 6815.4lx
- (90%): 7667.3lx — (100%): 8510.7lx



Luminance Limiting Curve

Diameter: 0mm

Length: 0mm

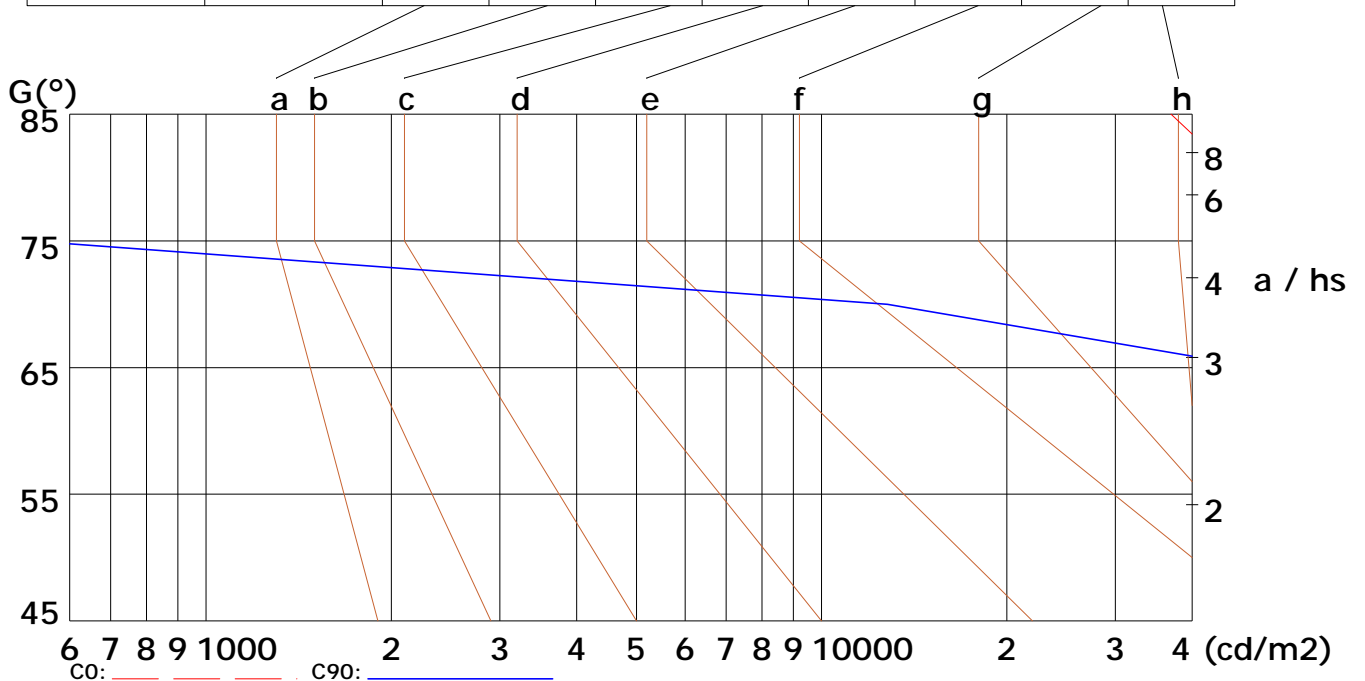
Width: 0mm

Height: 0mm

(cd/m²)

| | | | | | | | | | |
|----------|--------|--------|--------|-------|--------|--------|-----|-----|-----|
| γ | 45° | 50° | 55° | 60° | 65° | 70° | 75° | 80° | 85° |
| C0 | 22927 | 23115 | 23264 | 21687 | 117464 | 915725 | | | |
| C90 | 158129 | 137182 | 112348 | 81322 | 46006 | 12795 | | | |

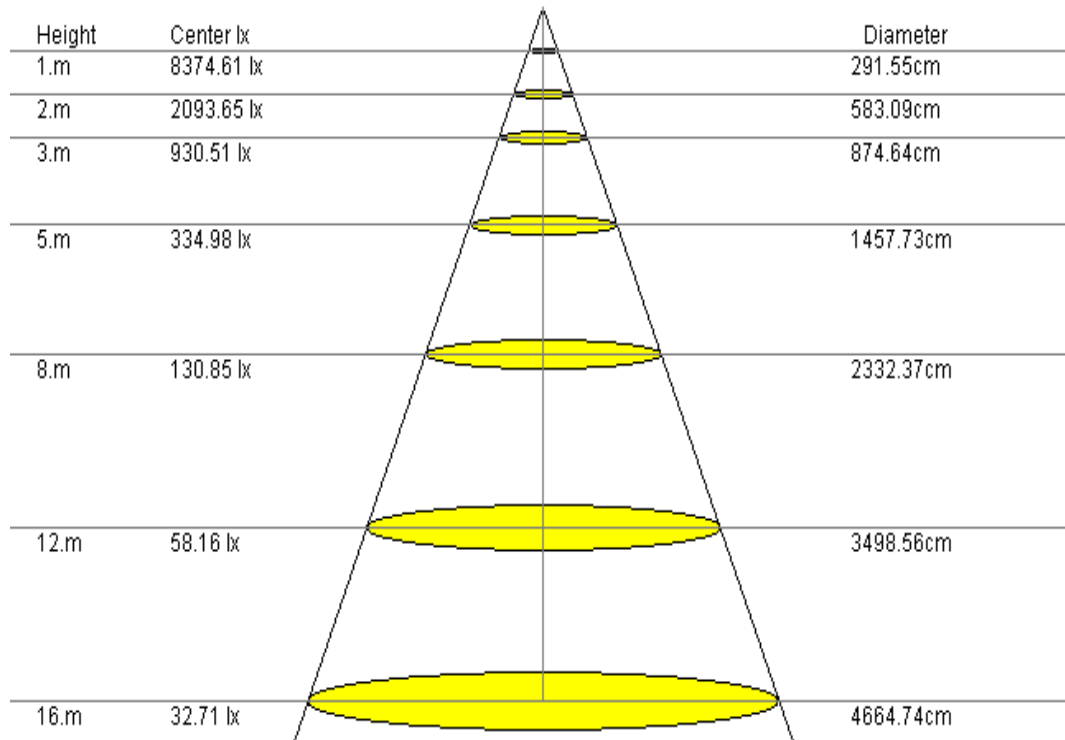
| Glare | Quality | Service Values Illuminance (lx) | | | | | | | | | |
|-------|---------|---------------------------------|------|------|------|------|------|------|------|--|--|
| 1.15 | A | 2000 | 1000 | 500 | ≤300 | | | | | | |
| 1.5 | B | | 2000 | 1000 | 500 | ≤300 | | | | | |
| 1.85 | C | | | 2000 | 1000 | 500 | ≤300 | | | | |
| 2.2 | D | | | | 2000 | 1000 | 500 | ≤300 | | | |
| 2.55 | E | | | | | 2000 | 1000 | 500 | ≤300 | | |



Lum. Limiting Curve (C0/C90)



Lux-Distance Curve



Beam Angle: 111.10° (50%Imax)

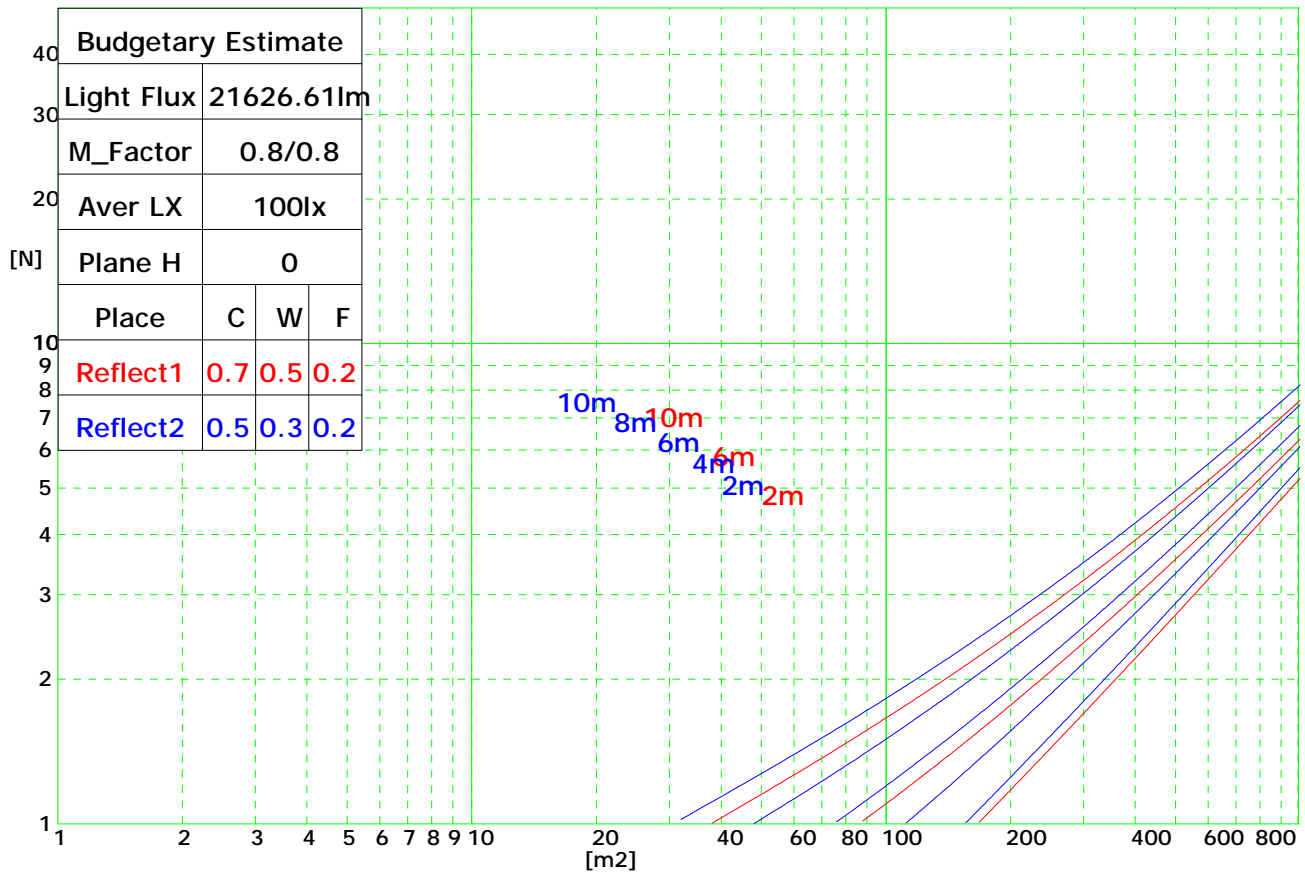


Coefficients of Utilization

| RHOCC | 80 | | | 70 | | | 50 | | | 30 | | | 10 | | | 0 |
|-------|--|------|------|------|------|------|------|------|------|------|------|------|------|------|------|------|
| RHOW | 50 | 30 | 10 | 50 | 30 | 10 | 50 | 30 | 10 | 50 | 30 | 10 | 50 | 30 | 10 | 0 |
| RCR | COEFFICIENTS OF UTILIZATION FOR RHOFC=20 | | | | | | | | | | | | | | | |
| 0 | 1.19 | 1.19 | 1.19 | 1.16 | 1.16 | 1.16 | 1.11 | 1.11 | 1.11 | 1.06 | 1.06 | 1.06 | 1.02 | 1.02 | 1.02 | 1.00 |
| 1 | 1.07 | 1.05 | 1.04 | 1.05 | 1.04 | 1.02 | 1.02 | 1.00 | 0.98 | 0.97 | 0.95 | 0.93 | 0.90 | 0.88 | 0.86 | 0.81 |
| 2 | 0.92 | 0.90 | 0.88 | 0.92 | 0.89 | 0.87 | 0.89 | 0.86 | 0.83 | 0.85 | 0.82 | 0.79 | 0.81 | 0.77 | 0.74 | 0.69 |
| 3 | 0.80 | 0.77 | 0.75 | 0.80 | 0.76 | 0.74 | 0.78 | 0.74 | 0.71 | 0.76 | 0.71 | 0.67 | 0.72 | 0.67 | 0.63 | 0.59 |
| 4 | 0.70 | 0.67 | 0.65 | 0.70 | 0.66 | 0.64 | 0.69 | 0.65 | 0.61 | 0.67 | 0.62 | 0.58 | 0.65 | 0.59 | 0.55 | 0.51 |
| 5 | 0.61 | 0.58 | 0.57 | 0.62 | 0.58 | 0.56 | 0.61 | 0.57 | 0.53 | 0.61 | 0.55 | 0.51 | 0.59 | 0.53 | 0.48 | 0.44 |
| 6 | 0.54 | 0.51 | 0.50 | 0.55 | 0.51 | 0.49 | 0.55 | 0.50 | 0.47 | 0.55 | 0.49 | 0.45 | 0.54 | 0.47 | 0.42 | 0.39 |
| 7 | 0.48 | 0.46 | 0.44 | 0.49 | 0.46 | 0.43 | 0.50 | 0.45 | 0.42 | 0.50 | 0.44 | 0.40 | 0.49 | 0.43 | 0.38 | 0.34 |
| 8 | 0.43 | 0.41 | 0.39 | 0.44 | 0.41 | 0.39 | 0.45 | 0.40 | 0.37 | 0.46 | 0.40 | 0.36 | 0.45 | 0.39 | 0.34 | 0.31 |
| 9 | 0.39 | 0.37 | 0.36 | 0.40 | 0.37 | 0.35 | 0.41 | 0.37 | 0.34 | 0.42 | 0.36 | 0.32 | 0.42 | 0.35 | 0.31 | 0.28 |
| 10 | 0.36 | 0.34 | 0.32 | 0.37 | 0.34 | 0.32 | 0.38 | 0.33 | 0.30 | 0.39 | 0.33 | 0.29 | 0.39 | 0.33 | 0.28 | 0.25 |



Indoor Budgetary Estimate Chart





UGR Glare Index

| Ceiling | 70 | 70 | 50 | 50 | 30 | 70 | 70 | 50 | 50 | 30 | |
|-----------|---|------|------|------|------|--|------|------|------|------|------|
| Wall | 50 | 30 | 50 | 30 | 30 | 50 | 30 | 50 | 30 | 30 | |
| Floor | 20 | 20 | 20 | 20 | 20 | 20 | 20 | 20 | 20 | 20 | |
| Room Size | Left to light axis direction of observation | | | | | Direction of light axis parallel observation | | | | | |
| X | Y | | | | | | | | | | |
| 2H | 2H | 14.8 | 15.9 | 15.1 | 15.9 | 16.3 | 14.7 | 15.9 | 14.9 | 15.9 | 16.3 |
| | 3H | 16.2 | 17.4 | 16.7 | 17.7 | 18.0 | 16.2 | 17.4 | 16.5 | 17.9 | 18.0 |
| | 4H | 16.9 | 18.1 | 17.4 | 18.6 | 18.7 | 17.0 | 18.0 | 17.3 | 18.6 | 18.8 |
| | 6H | 17.5 | 18.5 | 18.0 | 18.9 | 19.0 | 17.3 | 18.3 | 17.8 | 18.8 | 19.1 |
| | 8H | 17.9 | 18.9 | 18.2 | 18.9 | 19.3 | 17.8 | 18.7 | 18.0 | 19.0 | 19.3 |
| 4H | 12H | 18.0 | 18.8 | 18.2 | 19.3 | 19.5 | 17.8 | 18.6 | 18.0 | 19.2 | 19.5 |
| | 2H | 15.6 | 16.6 | 15.9 | 16.9 | 17.1 | 15.6 | 16.6 | 15.8 | 16.8 | 17.0 |
| | 3H | 17.5 | 18.4 | 17.8 | 18.3 | 18.7 | 17.3 | 18.2 | 17.5 | 18.4 | 18.8 |
| | 4H | 18.2 | 19.0 | 18.5 | 19.1 | 19.5 | 18.0 | 18.9 | 18.4 | 19.2 | 19.5 |
| | 6H | 18.8 | 19.5 | 19.2 | 19.8 | 20.1 | 18.8 | 19.4 | 19.0 | 19.7 | 20.1 |
| 8H | 8H | 19.0 | 19.8 | 19.5 | 19.9 | 20.4 | 19.0 | 19.6 | 19.2 | 19.9 | 20.3 |
| | 12H | 19.3 | 19.9 | 19.7 | 20.2 | 20.4 | 19.2 | 19.7 | 19.6 | 20.2 | 20.5 |
| | 4H | 18.6 | 19.2 | 18.8 | 19.4 | 19.9 | 18.4 | 19.0 | 18.8 | 19.4 | 19.8 |
| | 6H | 19.4 | 19.8 | 19.7 | 20.2 | 20.7 | 19.2 | 19.9 | 19.7 | 20.2 | 20.6 |
| | 8H | 19.8 | 20.2 | 20.1 | 20.5 | 20.9 | 19.6 | 20.0 | 20.0 | 20.5 | 20.9 |
| 12H | 12H | 19.9 | 20.5 | 20.4 | 20.7 | 21.3 | 19.9 | 20.4 | 20.2 | 20.7 | 21.1 |
| | 4H | 18.6 | 19.1 | 18.9 | 19.5 | 19.9 | 18.4 | 19.0 | 18.8 | 19.6 | 19.9 |
| | 6H | 19.6 | 20.0 | 19.9 | 20.2 | 20.6 | 19.3 | 19.8 | 19.8 | 20.2 | 20.7 |
| | 8H | 19.9 | 20.4 | 20.3 | 20.7 | 21.1 | 19.9 | 20.3 | 20.2 | 20.6 | 21.1 |
| | | | | | | | | | | | |
| | | | | | | | | | | | |