

CHB-CHC Series

Chokes & Reactors

Features:

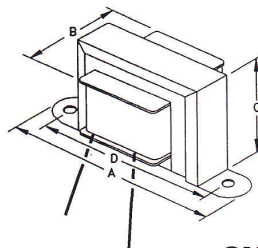
- Two popular mounting styles depending on inductance/current rating.
- 8" leads on channel mounting sizes (CHC).
- Screw termination on "L" bracket sizes (CHB).
- Vacuum varnish impregnated and oven baked for quiet operation.
- Inductance measured with rated D.C. flowing $\pm 15\%$ tolerance on inductance and resistance.
- CSA certified LR16597-50 for designs up to 70 Amps and 600 Volts.

CHC Types

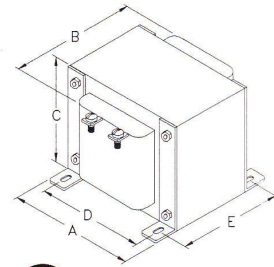


Dimensions

CHC



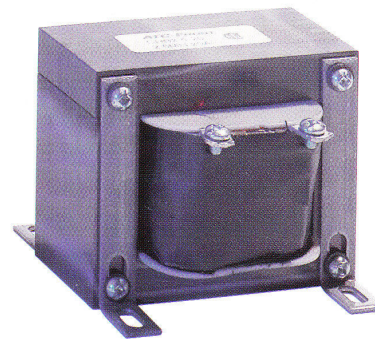
CHB



CHC - Channel Mounting Chokes

Induc. Henries	D.C. Current Ma.	Cat. No.	Resist. Ohms	Max. Op. Volts D.C.	Dimensions			
					A	B	C	D
7.0	25	CHC 153 E	770	300	1.63	0.75	0.81	1.38
2.2	50	CHC 153 H	305	300	1.63	0.75	0.81	1.38
0.9	75	CHC 153 L	125	300	1.63	0.75	0.81	1.38
0.6	100	CHC 153 M	86	300	1.63	0.75	0.81	1.38
20	20	CHC 154 E	1666	300	2.06	1.13	1.88	1.75
9	40	CHC 154 G	700	300	2.06	1.13	1.88	1.75
4	50	CHC 154 H	300	300	2.06	1.13	1.88	1.75
2	100	CHC 154 M	175	300	2.06	1.13	1.88	1.75
60	8	CHC 155 C	2750	400	2.38	1.25	1.38	2.00
7	40	CHC 155 G	340	400	2.38	1.25	1.38	2.00
5	50	CHC 155 H	270	400	2.38	1.25	1.38	2.00
15	30	CHC 155 J	1026	400	2.38	1.25	1.38	2.00
150	8	CHC 156 C	3700	400	2.81	1.31	1.63	2.38
9	40	CHC 156 G	300	400	2.81	1.31	1.63	2.38
5	75	CHC 156 L	135	400	2.81	1.31	1.63	2.38
3	100	CHC 156 M	86	400	2.81	1.31	1.63	2.38
1.5	200	CHC 156 R	56	400	2.81	1.31	1.63	2.38
30	40	CHC 157 G	595	400	3.25	1.63	1.94	2.81
10	65	CHC 157 J	205	400	3.25	1.63	1.94	2.81
14	75	CHC 157 L	429	400	3.25	1.63	1.94	2.81
8	100	CHC 157 M	259	400	3.25	1.63	1.94	2.81
3.5	150	CHC 157 Q	98	400	3.25	1.63	1.94	2.81
2	200	CHC 157 R	57	400	3.25	1.63	1.94	2.81
15	75	CHC 158 L	411	400	3.25	1.88	1.94	2.81
10	100	CHC 158 M	262	400	3.25	1.88	1.94	2.81
5	150	CHC 158 Q	105	400	3.25	1.88	1.94	2.81
1.5	250	CHC 158 S	60	400	3.25	1.88	1.94	2.81
1.0	300	CHC 158 T	40	400	3.25	1.88	1.94	2.81
15	100	CHC 159 M	256	500	4.00	2.25	2.63	3.56
10	125	CHC 159 P	155	500	4.00	2.25	2.63	3.56
7	150	CHC 159 Q	100	500	4.00	2.25	2.63	3.56
4	225	CHC 159 S	65	500	4.00	2.25	2.63	3.56
2.5	300	CHC 159 T	43	500	4.00	2.25	2.63	3.56
1.5	500	CHC 159 V	27	500	4.00	2.25	2.63	3.56
0.6	750	CHC 159 Y	11	500	4.00	2.25	2.63	3.56
Higher Current Channel Mounting Chokes								
3 mH	1.5 Amp	CHC 154 B	.14	300	2.06	1.13	1.88	1.75
6 mH	2 Amp	CHC 155 B	.3	400	2.38	1.25	1.38	2.00
1.5 mH	5 Amp	CHC 156 B	.07	400	2.81	1.31	1.63	2.38
1 mH	10 Amp	CHC 157 D	.038	400	3.25	1.63	1.94	2.81
300 mH	1 Amp	CHC 159 ZA	6.0	500	4.00	2.13	2.63	3.56
60 mH	2 Amp	CHC 159 ZC	.7	500	4.00	2.13	2.63	3.56
28 mH	3 Amp	CHC 159 ZE	.43	500	4.00	2.38	2.63	3.56
15 mH	4 Amp	CHC 159 ZG	.25	500	4.00	2.25	2.63	3.56
10 mH	5 Amp	CHC 159 ZJ	.16	500	4.00	2.25	2.63	3.56
2.5 mH	10 Amp	CHC 159 ZL	.044	500	4.00	2.50	2.63	3.56

CHB Types



CHB Bracket Mounting Reactors

Induc. Milli-henries	Current D.C. Amps	Cat. No.	Resist. Ohms	Dimensions				
				A	B	C	D	E
1.0	20	CHB 1-20	.013	3.00	3.06	2.50	2.50	2.12
1.0	30	CHB 1-30	.009	3.75	3.85	3.13	3.13	2.50
1.0	50	CHB 1-50	.005	4.50	3.50	3.75	3.75	4.25
2.5	20	CHB 2.5-20	.025	3.75	3.88	3.13	3.13	2.75
2.5	30	CHB 2.5-30	.01	4.50	5.13	3.75	3.75	3.50
5	10	CHB 5-10	.042	3.75	3.63	3.13	3.13	2.25
5	20	CHB 5-20	.03	4.50	4.75	3.75	3.75	3.25
10	10	CHB 10-10	.07	3.75	4.25	3.13	3.13	3.00
20	10	CHB 20-10	.13	4.50	4.25	3.75	3.75	3.50
30	5	CHB 30-5	.23	3.75	3.75	3.13	3.13	2.75
30	10	CHB 30-10	.16	4.50	6.00	3.75	3.75	4.75
100	5	CHB 100-5	.52	4.50	5.25	3.75	3.75	4.25