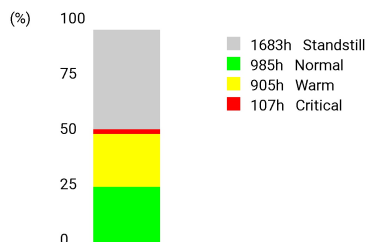


Operating time rate



Switch-offs

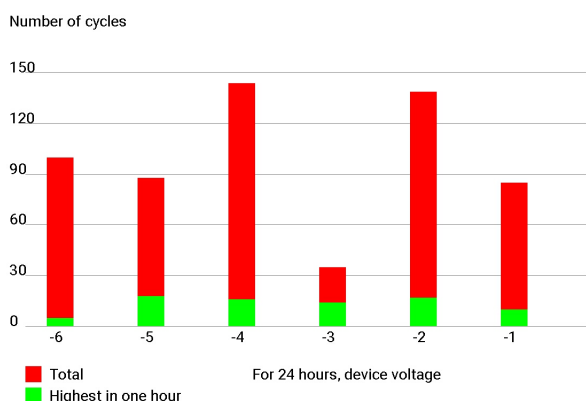
DUE TO ERRORS 93
 DUE TO OPERATIONS 6728

Compressor running time

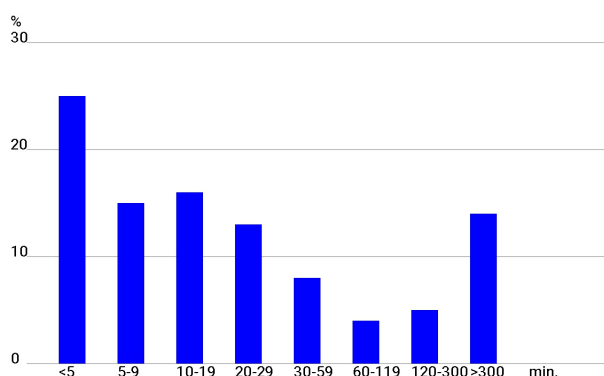
With bridged relay contact 00:00h

Number per hour Since 7min 4
 Number per day Since 18:07h 53

History



Compressor running time



Number of events

{8}{40} Motor sensor Short circuit	5
{13} Discharge gas sensor Short circuit	2
{2}{38} Motor sensor Stat. switch-off, alarm	29
{3}{4} Motor sensor Dyn. switch-off, alarm	27
{12} Discharge gas sensor Stat. switch-off, alarm	28
{7} Switching frequency limitation Alarm	2
{11} Bypassing the relay Report	1
{1}{15}{16}{33}{39}{43} Power reset Message	76

Message Warning Error List

Last event: 30.11.2017 12:30

- >= 00:44h {1} General monitoring Power reset
- >= 00:05h {15} Temperature monitoring Temperature too high after power reset
- 12:00h {2} Temperature monitoring Static switch-off, permissible temperature was exceeded
- >= 00:05h {1} General monitoring Power reset
- >= 47:00h {16} Discharge gas temperature monitoring Temperature too high after power reset
- 00:15h {12} Discharge gas temperature monitoring Permissible discharge gas temperature exceeded
- >= 00:34h {1} General monitoring Power reset
- > 120:00h {2} Temperature monitoring Static switch-off, permissible temperature was exceeded
- {1} General monitoring Power reset
- >= 00:02h

01:19h {12} Discharge gas temperature monitoring
Permissible discharge gas temperature
exceeded

00:01h {2} Temperature monitoring
Static switch-off, permissible temperature was
exceeded

00:28h {3} Temperature monitoring, dynamic
Dynamic switch-off; rapid temperature increase
in the motor winding

{1} General monitoring
Power reset