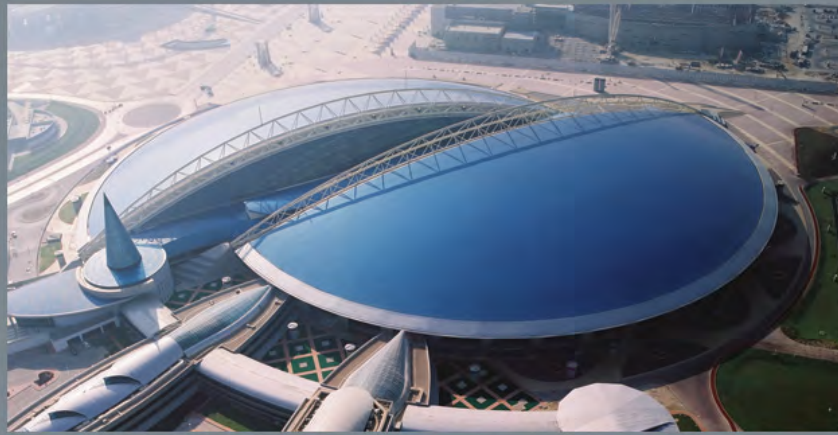




AXYZ
INTERNATIONAL



PANEL **Builder**[™]
One Process One Solution



*The World's Leading Panel
Fabrication System*



XYZ International is a leading global manufacturer of CNC router systems and CNC knife systems. Designed and built at our state of the art factory in Canada, XYZ CNC routers are supplied and supported through a global network of sales and support offices and authorised dealers. With over 366,918 standard machine configurations, XYZ specialize in matching machinery to customer's unique needs and budgets.

FAST

XYZ has changed the whole concept of speed when delivering a customized machine. With our exceptional manufacturing processes, XYZ offer the shortest manufacturing lead times in the industry, averaging 4-6 weeks.

FLEXIBLE

One of the greatest strengths of XYZ International is the ability to configure a machine to suit specific manufacturing needs. The ability to produce our own machine controller has made the impossible possible, passing the benefits onto both new and existing customers. XYZ offer a range of configurations to meet almost any application requirement, and despite this flexibility our refined processes have ensured there is no compromise on quality.

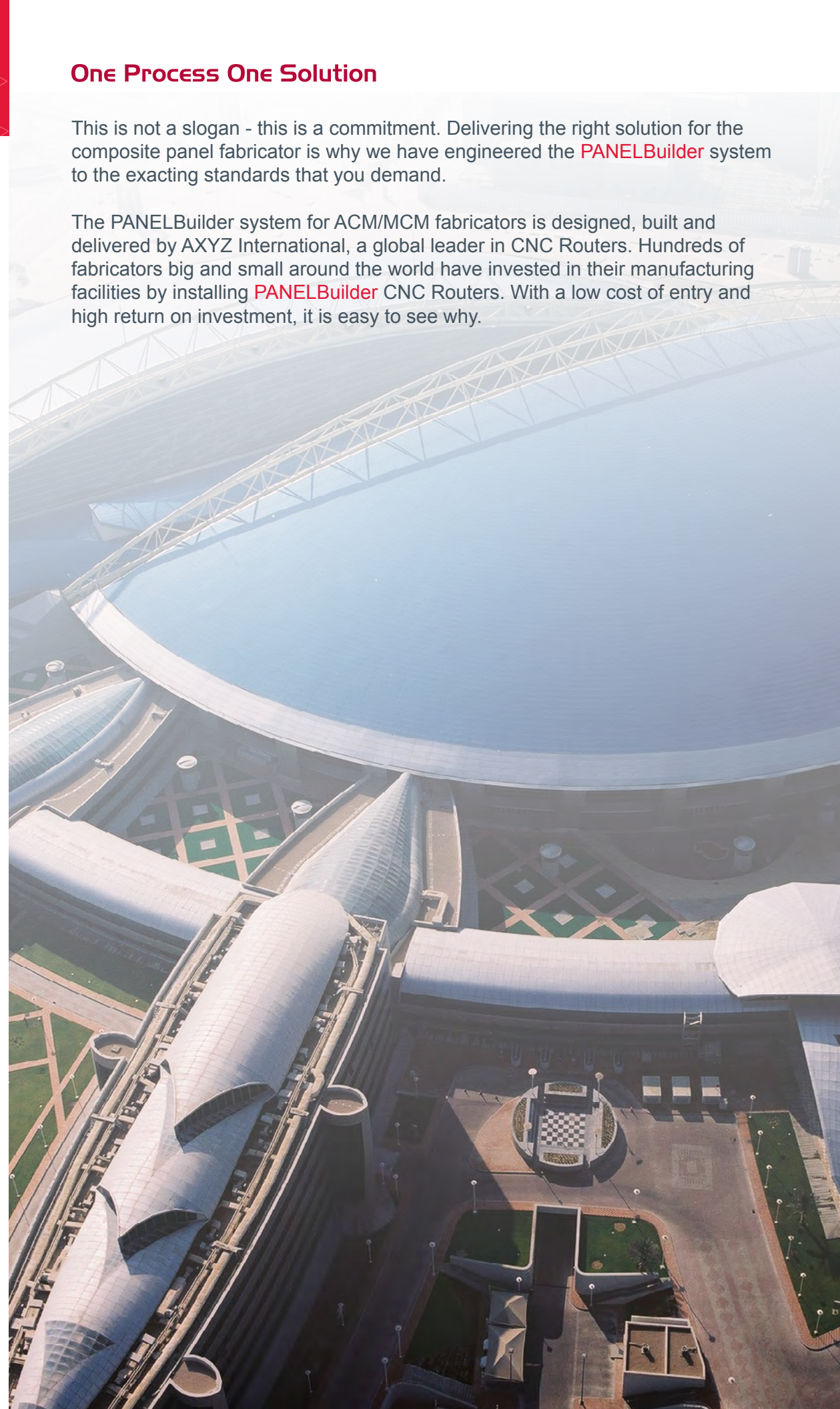
DIRECT

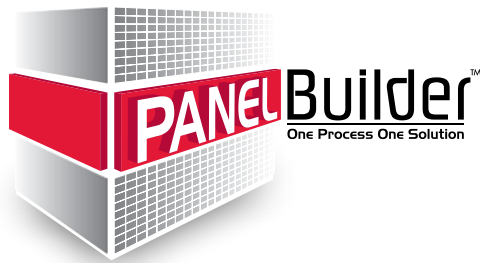
Our team have sales and support offices in Canada, the United States, the UK, Poland and India, enabling us to directly interact with more than 90% of our customers. Each of our twelve locations have dedicated sales representatives who have the skills and knowledge to provide individual, bespoke product demonstrations and answer any questions in a convenient location.

One Process One Solution

This is not a slogan - this is a commitment. Delivering the right solution for the composite panel fabricator is why we have engineered the **PANELBuilder** system to the exacting standards that you demand.

The **PANELBuilder** system for ACM/MCM fabricators is designed, built and delivered by XYZ International, a global leader in CNC Routers. Hundreds of fabricators big and small around the world have invested in their manufacturing facilities by installing **PANELBuilder** CNC Routers. With a low cost of entry and high return on investment, it is easy to see why.



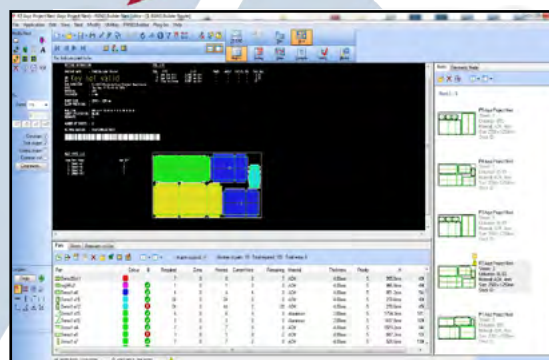
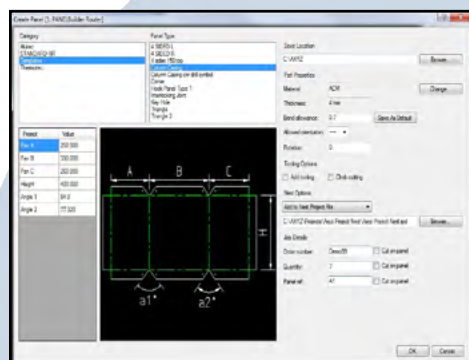


The **PANELBuilder** system is the leading fabrication system for Aluminium composite and metal composite materials, developed from over 20 years of experience in providing solutions for the ACM and MCM cladding industry.

The solution comprises both software and hardware which work seamlessly together for fast and efficient production.

Define panels from library of parametric templates.

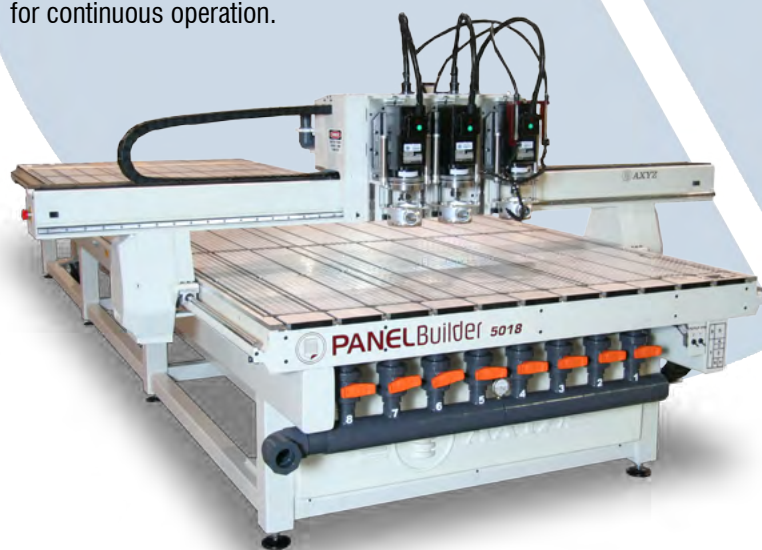
Optionally add panels created in other software eg: AutoCAD.



Nest for optimal production, auto programming and job sheet creation.

Manufacture on multi head machine for grooving, drilling and profile cutting.

Optional Pendulum Processing for continuous operation.



The **PANELBuilder** CNC Routers from XYZ International are designed specifically for processing large volumes of ACM and MCM sheets in the fastest and most efficient way possible.

The machine itself can be configured to suit your exact needs. Process areas can be selected from 60" (1,524mm) x 120" (3,048mm) to a massive 85" (2,159mm) x 478" (12,129mm) or longer in increments of 24" (600mm), allowing one or more standard size sheets to be processed at once.

A typical **PANELBuilder** Router will have two or three cutting heads which allows a virtually instant change between tools used for grooving, drilling and profile cutting and eliminates the need for an automatic toolchanger system.

Alternatively, a single or twin head setup working with a 7, 21 or 33 station automatic toolchanger can also provide a flexible solution and may be more suitable for some requirements. In addition there are a wide range of optional features and accessories which you can choose from to create your ideal solution.

Typical PANELBuilder Systems

XYZ 5018 PANELBuilder System



Process Area: 72" x 216"
(1,842mm x 5,486mm)

XYZ 5034 PANELBuilder System



Process Area: 72" x 408"
(1,842mm x 10363mm)
Higher throughput can be achieved with a pendulum processing system.

XYZ 6018 PANELBuilder System



Process Area: 84" x 216"
(2133mm x 5486mm)
Fabricators who also manufacture cladding from high pressure laminates will often choose a wider machine.

- **Head Configuration:** Triple 5Hp router spindles.
- **Chip Extraction:** Three high capacity pressure feet for efficient chip and dust removal coupled to an auto switching manifold.
- **Depth Control:** Two or more floating head nose riders for accurate depth control
- **Material Hold Down:** High performance vacuum pump for safe and secure material clamping while cutting.
- **Material Location:** Automatic pop-up pins for precise material alignment.

Alternative Head Configurations

Software

1 Carriage with 3 Spindles

Three router spindles mounted on a single carriage to allow processing of jobs requiring up to 3 tools with no downtime for tool changing.



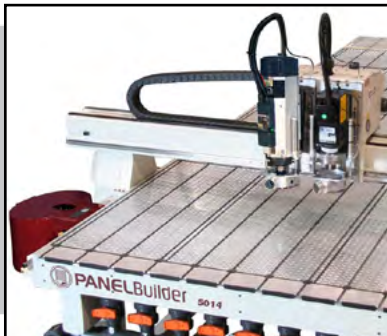
1 Carriage with 2 Spindles

Two router spindles which can be fitted with different tools for use on the same job. There is therefore no delay when changing tools.



1 Carriage with 2 Spindles and 7, 21 or 33 Station Auto Toolchange

A single 5Hp ELTE spindle mounted adjacent to a 10Hp HSD spindle which works with the Automatic Tool Changer. This provides an extremely versatile configuration suitable for working with a wide range of materials and applications.



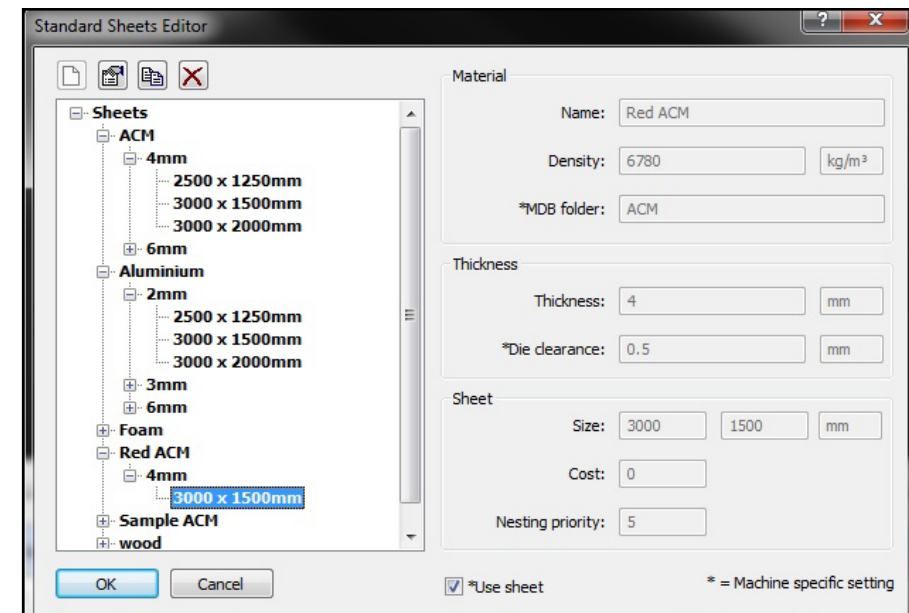
PanelPrinter

PanelPrinter is an optional device designed to automatically print panel information directly onto individual parts as they are cut. Designed primarily for use with PanelBuilder systems it can print part names, part numbers and also 2D data matrix codes.



Spray Mister

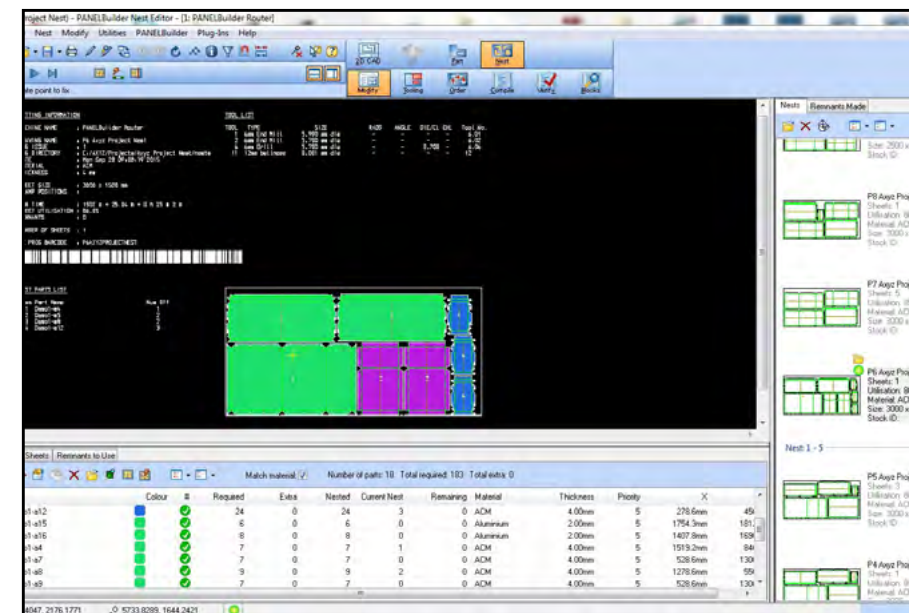
An automatic spray mister unit which can be used to apply lubricant and coolant when required for processing certain materials, eg: solid aluminum sheet.



Automated Machine Programming

Creating the NC programs for the XYZ PANELBuilder router couldn't be easier. Whatever your machine configuration the programs are automatically generated ready for downloading to the machine and cutting.

Detailed job sheets are printed for the operator to ensure the right material is loaded for each job.



Nesting and Material Optimization

PANELBuilder contains a sophisticated nesting algorithm which can save an enormous amount of time and significantly reduce waste. The nesting process allows full control of settings such as panel orientation for grain alignment, clearance between parts, common line cutting, part priority and many more. Instant nesting feedback including material utilization allows alternative solutions to be easily assessed.

Software

Other PANELBuilder Features:

Batch Drawing Import

If you have a lot of panel designs supplied by a customer or created in other CAD systems these can be easily imported using industry standard DXF and DWG formats.

Multi-Panel DXF Import

Automatically imports and separates multiple panel drawings within one DXF file.

Auto Scrap Cut Lines

Where scrap is unavoidable, the machine can be programmed to automatically cut this into smaller pieces for removal and disposal.

Tool Library

Tooling is easily defined and saved in a library for use on all projects.

Cut Sequencing

The order of cutting is automatically set by PANELBuilder but can be manually adjusted if required.

Labelling

Automatic label generation makes it easy to identify and keep track of manufactured panels at later assembly and finishing stages. Labels can be printed or even engraved on the panel and barcode labelling is also supported.

PanelPrinter

The optional PanelPrinter accessory offers fast and accurate printing onto the panels as they are cut.

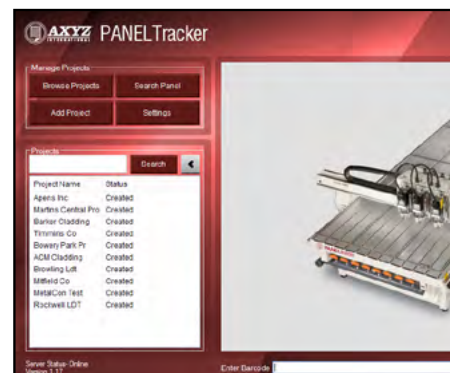
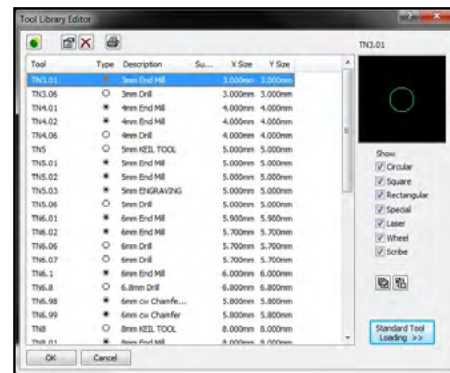
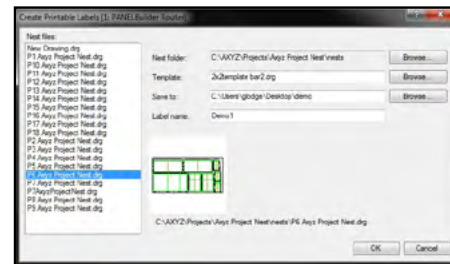
PanelTracker

Optional management reporting app for tracking the progress of projects and managing recutting of damaged panels.

Material Library, Remnants and Filler Parts

As well as providing very efficient nesting of parts, PANELBuilder offers additional functionality to substantially reduce waste and cut costs.

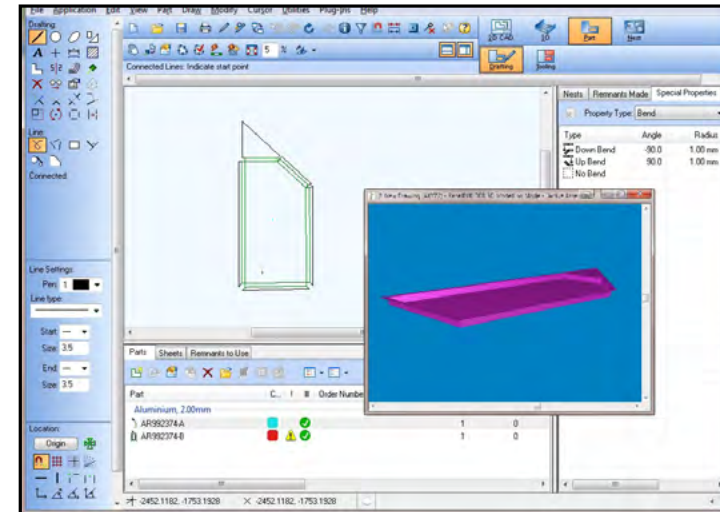
- A library of standard material types and sizes is maintained with stock levels automatically updated globally as well as on a project basis. This ensures you always have the right types and quantities of material available at all times.
- Often it is impossible to fully utilize a standard size sheet of material on a particular job. Leftover sheets remnants can be automatically stored and used up on subsequent jobs where possible.
- A useful 'filler parts' feature provides another way to reduce waste by automatically cutting extra copies of commonly used parts in any leftover areas of a sheet.



Software

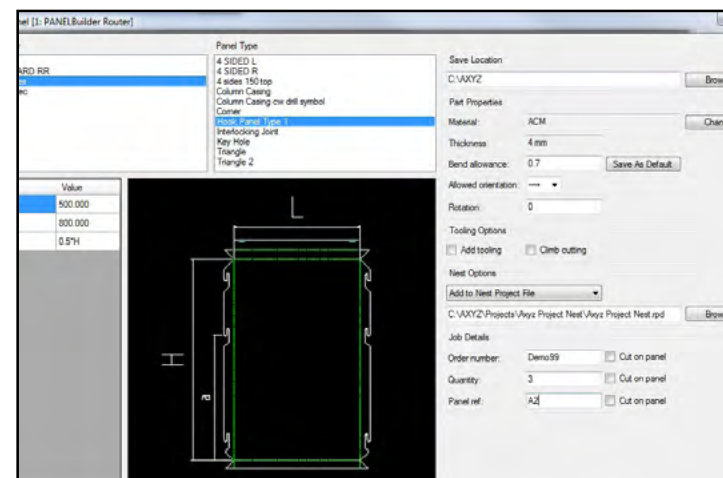
The PANELBuilder Software has been specially developed by XYZ to meet the needs of Panel Fabricators worldwide.

It is a complete CAD/CAM solution incorporating all of the functionality needed for one-off or high volume panel production. Alternatively, thanks to its open architecture design it can be used in conjunction with existing CAD systems to provide powerful and flexible nesting, automation and machine programming functionality.



3D Visualisation

Visualize folded panels in 3D to verify designs before manufacture. Reduce the possibility of errors and scrap material. Fully integrated with PANELTracker for project management.



Parametric Templates

Create a library of standard panel templates using the built in 2D CAD system. Panels can optionally be saved as a parametric template which allows multiple copies of that panel to be constructed at any desired size with just a few mouse clicks.

Auto Panel Creation from Spreadsheet Data

This is a huge time saver on large projects and allows hundreds or even thousands of panels to be created in seconds by importing data from a spreadsheet. The data can include panel type, dimensions, material, grain direction requirements and more.

Machine Options



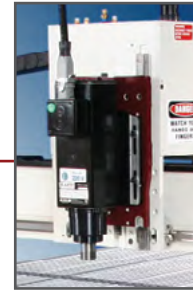
Vacuum Manifold

The vacuum manifold is available for twin and triple head configurations. It contains fully automatic valves for switching suction to the currently active head. Waste extraction is extremely efficient and reduces the need for manual debris removal.



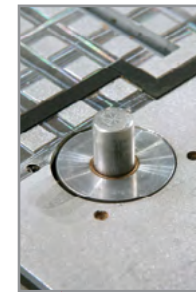
Hold Down Vacuum Pump

A maintenance free vacuum pump with high efficiency for powerful material clamping while cutting.



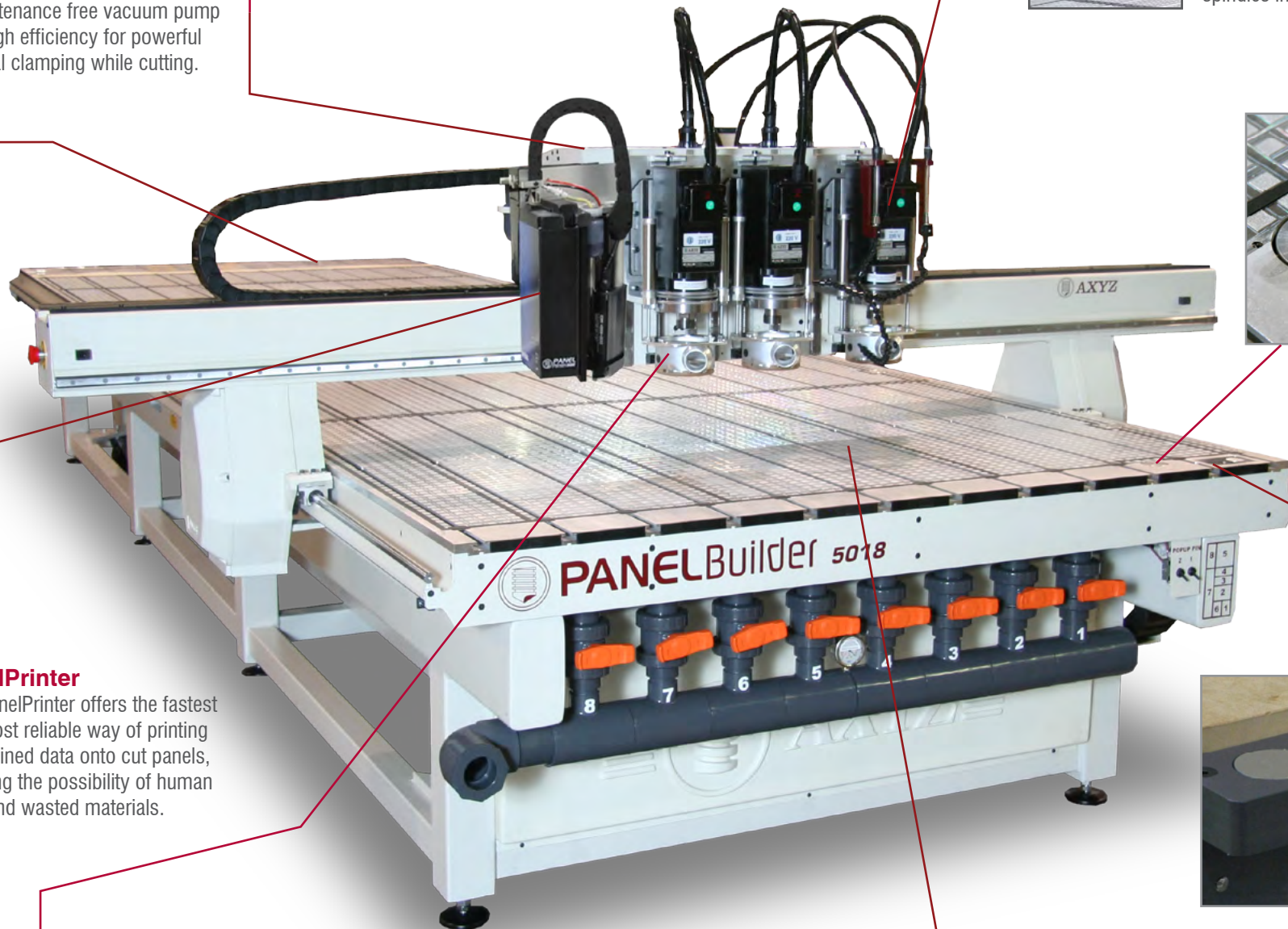
Spindles

Our spindles are precision balanced for fast, clean cutting and ultra quiet operation. Operating at variable speeds up to 24,000rpm with high speed bearings, their excellent design provides years of trouble free use. We feature ELTE & HSD brand spindles in 5 or 10 HP models.



Pop-up Pins

The hardened steel pins are pneumatically activated to allow fast, repeatable placement of your cutting materials on the machine. Pop up pins can be fitted in both front and rear locations for pendulum processing operation.



PanelPrinter

The PanelPrinter offers the fastest and most reliable way of printing pre-defined data onto cut panels, reducing the possibility of human error and wasted materials.



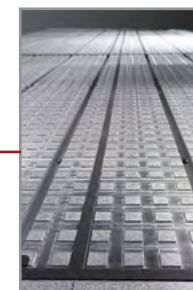
Automatic Tool Calibration

All PANELBuilder machines include an automatic tool length sensor. This is extremely useful for multi tool machines by providing an easy to use and highly accurate method of setting tool bit heights at the press of a button.



High Capacity Pressure Feet

The High Capacity chip extraction foot is a vital component of your XYZ CNC Router. The pressure foot is specially designed for optimal chip extraction as well as assisting with material stability for high quality of cut.



Aluminum Vacuum Deck

This innovative design allows zoned areas of the surface to be opened or closed to vacuum hold down as needed. The deck system is also functional as a t-slot clamping and fixturing bed for non-vacuum hold down situations.

PANELPrinter

PANELPrinter

Manually writing product codes or applying pre-printed labels onto individual parts is an arduous and time consuming task which is easily prone to human error. PanelPrinter is an optional device which can be fully integrated with your PANELBuilder machine for automatic printing of data onto individual panels as they are machined.

Benefits

- Eliminates problems and potential errors associated with the manual labelling approach. This enables greater accuracy, easier tracking and a more productive workshop.
- Can print 2D Data Matrix codes as well as standard text. When used with the 2D Barcode Reader, this enables accurate production data to be easily collected for use in management information systems such as PANELTracker.
- Minimal impact on production times. Data is automatically included in the program output. from PanelBuilder software



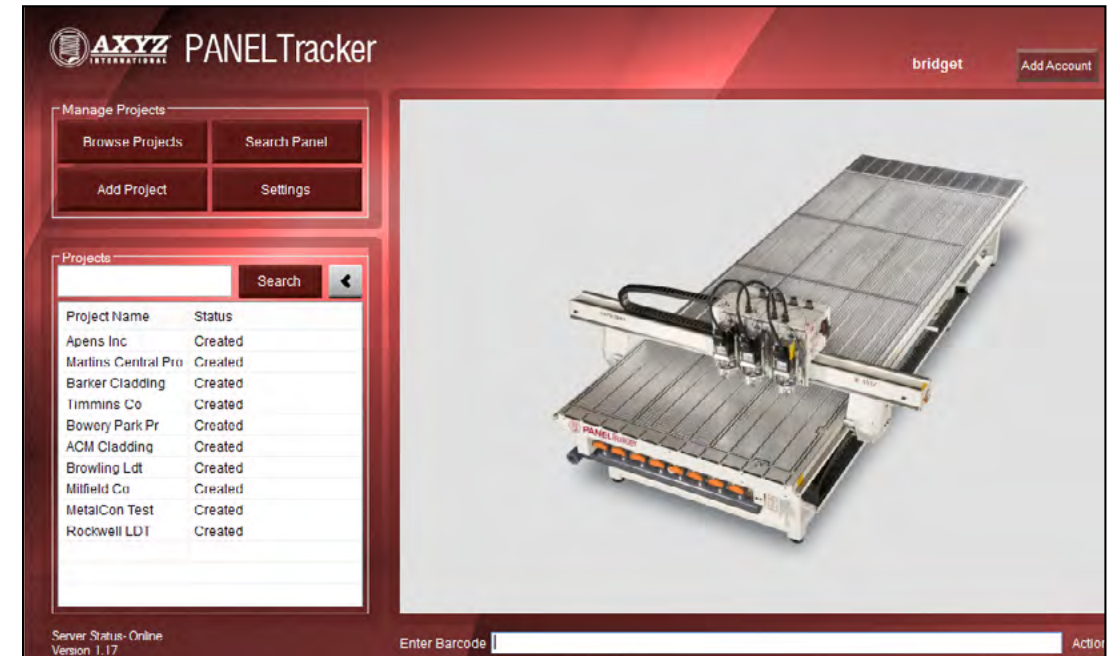
Features

- Fast printing speed of 500inch/min (12.7m/min)
- Can print up to 32 characters 2D data matrix code
- Works with the XYZ 2D Barcode Reader
- Select from 5 different character sizes

PANELTracker

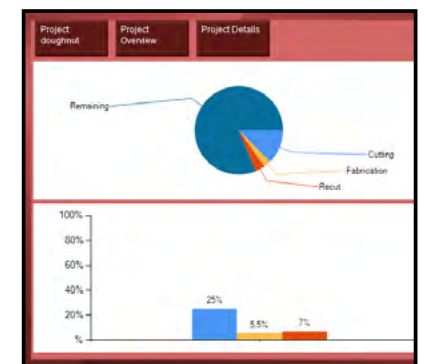
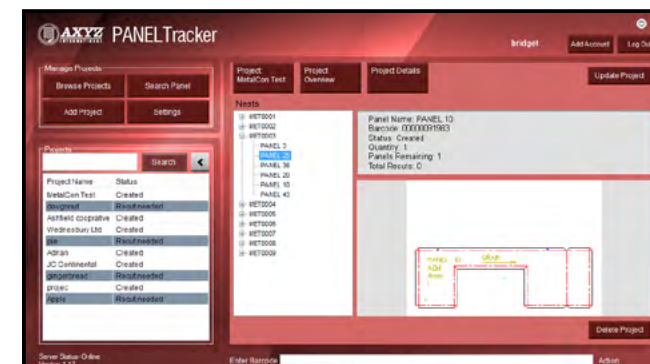
PANELTracker

PANELTracker is an optional application that provides valuable project information for all stakeholders involved in the manufacturing process. Wireless barcode readers ensure data capture is fast and error free, helping production establish inventory levels and live project status.



PANELTracker app provides overall project information including:

- Number of panels to be cut
- Number of panels that have been cut
- Number of fabricated panels
- Panels waiting to be shipped
- Panels to be re-cut



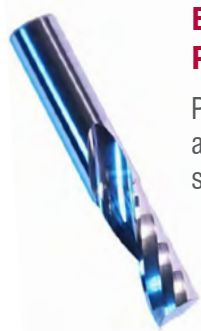
Specific Cutting Tools & Accessories

The **PANELBuilder** solution is designed to process all types of composite sheets materials such as Alucobond (3A Composites), Alpolic (Mitsubishi Chemical), Reynobond (Alcoa) and others.

These composites are mainly formed of thin aluminum skin surrounding a polyethylene core to give an overall sheet thickness of usually 0.118" - 0.236". Sometimes the skin will be some other metal instead of

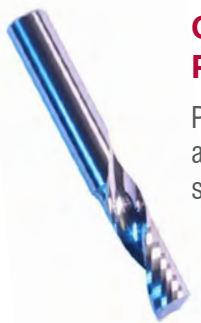
aluminum such as stainless steel, titanium, copper or zinc. Many fabricators will also work with solid aluminum wall panels, usually 0.157" thick.

Specialist **XYZ** Application Engineers have sourced a range of cutting tools suitable for use on all of these materials which provide superior cutting performance at cost effective prices. These experts are always available to provide help and assistance if needed.



Belin Upcut ACM Profiling Tools

Profiling of 0.118", 0.157" and 0.23" material producing superior edge equality.



Onsrud Upcut ACM Profiling Tools

Profiling of 0.118", 0.157" and 0.23" material producing superior edge equality.



XYZ V-Cutters

V-groove with flat tip to produce the required angle and fold radius.



Pressure Foot

The high capacity pressure foot integrates with any dust-extraction system for efficient debris removal, resulting in faster, safer processing.



Nose Rider

The Nose Rider collar sets the protrusion of the cutting tool through the bottom of the foot and is ideal for accurate grooving or slotting applications in materials of inconsistent thickness.



EZ Ryder

A purpose built mounting plate that reduces/eliminates glide vibration when nose riding.



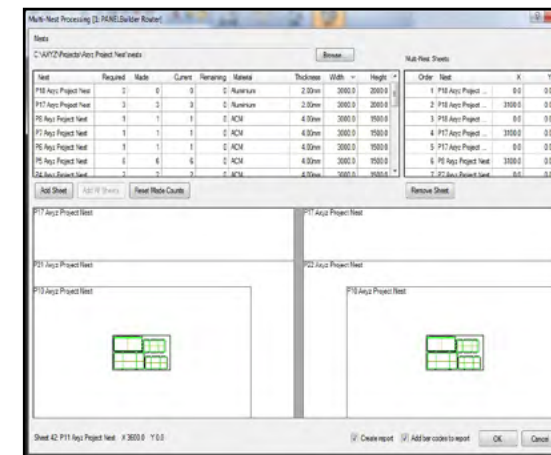
Blue Donut

A unique and highly durable accessory designed for low friction. It reduces friction by 90% allowing smoother and faster cutting.

Continuous Production with Pendulum Processing

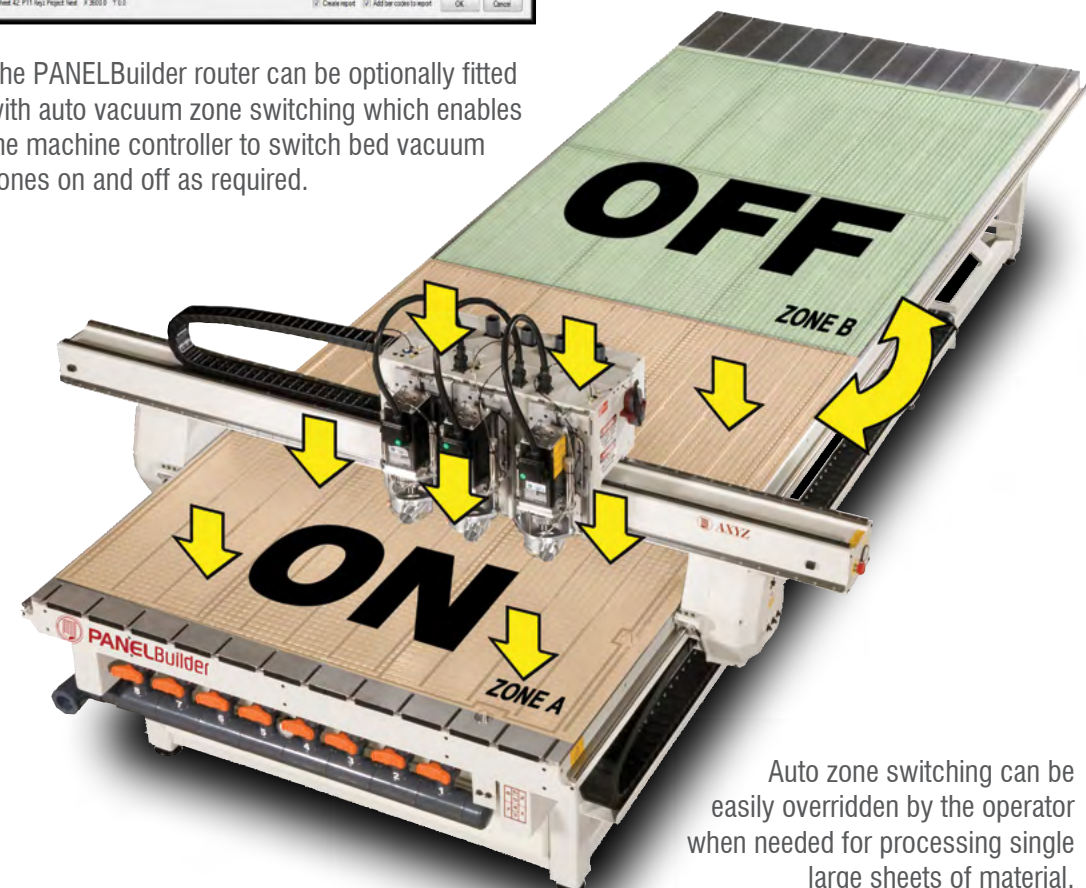
The most efficient way to manufacture panels is to keep the machine cutting at all times. This is easily achieved using the **PANELBuilder 'Pendulum Processing'** feature.

This allows the machine bed to be split into 2 virtual zones so that a sheet can be processed on one zone while the operator removes the parts and waste from the other zone and a new sheet loaded ready to be cut. Automatic switching of the vacuum hold down and material locating pins are fully integrated for seamless, continuous production.



The **PANELBuilder** programming software provides an intuitive graphical interface for scheduling jobs to be cut on each of the virtual zones.

The **PANELBuilder** router can be optionally fitted with auto vacuum zone switching which enables the machine controller to switch bed vacuum zones on and off as required.



Auto zone switching can be easily overridden by the operator when needed for processing single large sheets of material.

Project Examples



Technical Support

Expert Operational Training Program

To fully harness the power of the PANELBuilder System, your team will be trained by our professional training group.

Each PANELBuilder System includes a comprehensive installation and training program. This ensures your design and fabrication team are capable of programming your new CNC Router with PANELBuilder software and can operate the machine safely and confidently.

Additional training is available through any of our Centers across North America, Europe and the Middle East.

Professional Technical Application Support

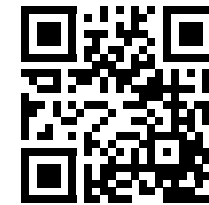
The PANELBuilder system is a result of years of testing and field interaction with fabricators like yourselves. Technical and application support is available from your local XYZ ADC as well from our main line technical support group.

We have the ability to go online with your personnel to resolve issues of all complexities. Our team of experienced service engineers have the knowledge to quickly diagnose issues and will help you get back into production as soon as possible.

Call today for more information on how a **PANELBuilder** System can work for you.

Our Sales Specialists will work with you to identify your specific application needs, and provide an accurate quotation for the system most suitable for you and your operations.

*For more detailed information and videos showing PANELBuilder machines and software, visit our dedicated website at:
www.panelbuilder.net*





AXYZ WORLDWIDE

AXYZ International - CANADA

Burlington (Headquarters)

5330 South Service Rd
Burlington, ON L7L 5L1
Phone: 905 634 4940
Toll Free: 800 361 3408
Fax: 905 634 4966

Burlington (Sales / Showroom)

3100 Harvester Rd, Unit 4
Burlington, ON L7N 3W8
Phone: 905 634 4940
Toll Free: 800 361 3408
Fax: 905 634 4966

Calgary

4615-112 Avenue SE, Unit 401
Calgary, AB T2C 5C5
Phone: 403 236 4464
Toll Free: 800 361 3408
Fax: 403 279 4206

Quebec

1305 boul. Dagenais Ouest
Laval, QC H7L 5Z9
Phone: 450 624 9898
Toll Free: 800 682 3852
Fax: 450 624 9685

AXYZ International - USA

Anaheim

2910 E. La Palma Ave Unit A
Anaheim CA 92806
Phone: 714 974 6200
Toll Free: 800 527 9670
Fax: 714 202 5110

Atlanta

1865 corporate Drive, Unit 225
Norcross, GA USA 30093
Phone: 678 381 2300
Toll Free: 800 527 9670
Fax: 678 381 2304

Cincinnati

2844 East Kemper Rd
Cincinnati, OH USA 45241
Phone: 513 771 7444
Toll Free: 800 527 9670
Fax: 513 326 5283

New Jersey

24 World's Fair Drive, Suite D,
Somerset, NJ USA 08873
Phone: 732-469-1720
Toll Free: 800 527 9670

Tampa

1911 N US 301 Suite 200
Tampa, FL, 33619
Phone: 813-620-3105
Toll Free: 800 527 9670

AXYZ International - UK

Nottingham

Unit i5a Cowlairs
Nottingham, England NG5 9RA
Phone: +44 115 975 8100

Telford

Telford 54 Business Park
Nedge Hill, Telford TF3 3AL
Phone: +44 195 229 1600

AXYZ International Export Sales

Telford

Telford 54 Business Park
Nedge Hill, Telford TF3 3AL
Phone: +44 195 221 0971

AXYZ International - INDIA

Bangalore

Ground Floor, "RUKMINI PLAZA"
No. 1047, 20th Main, 5th Block,
Rajajinagar (West of Cord Rd)
Bangalore, India 560 010
Phone: +91 80 2314 6628
Fax: +91 80 2314 6662

AXYZ International POLAND

Katowice

ul. Oswobodzenia 1
40-403 Katowice, Poland
Phone: +48 32 259 7550
Fax: +48 58 585 8119



www.panelbuilder.net

PANELBuilder
One Process One Solution