



— ProCompositeTech —



— ProCompositeTech —



www.casadei-industria.com

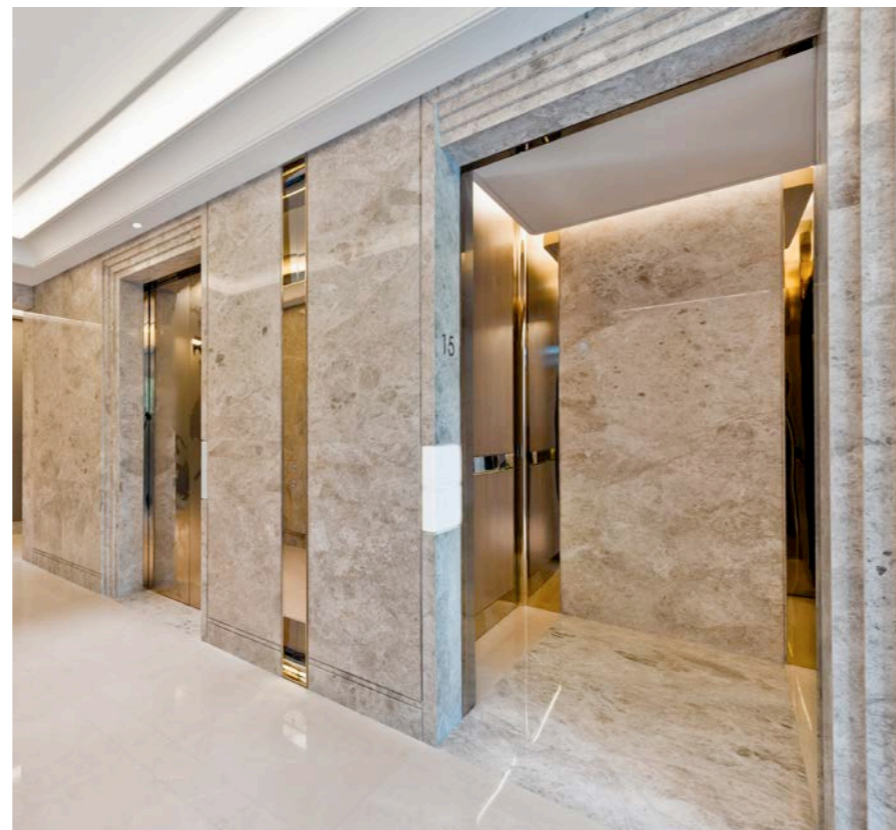
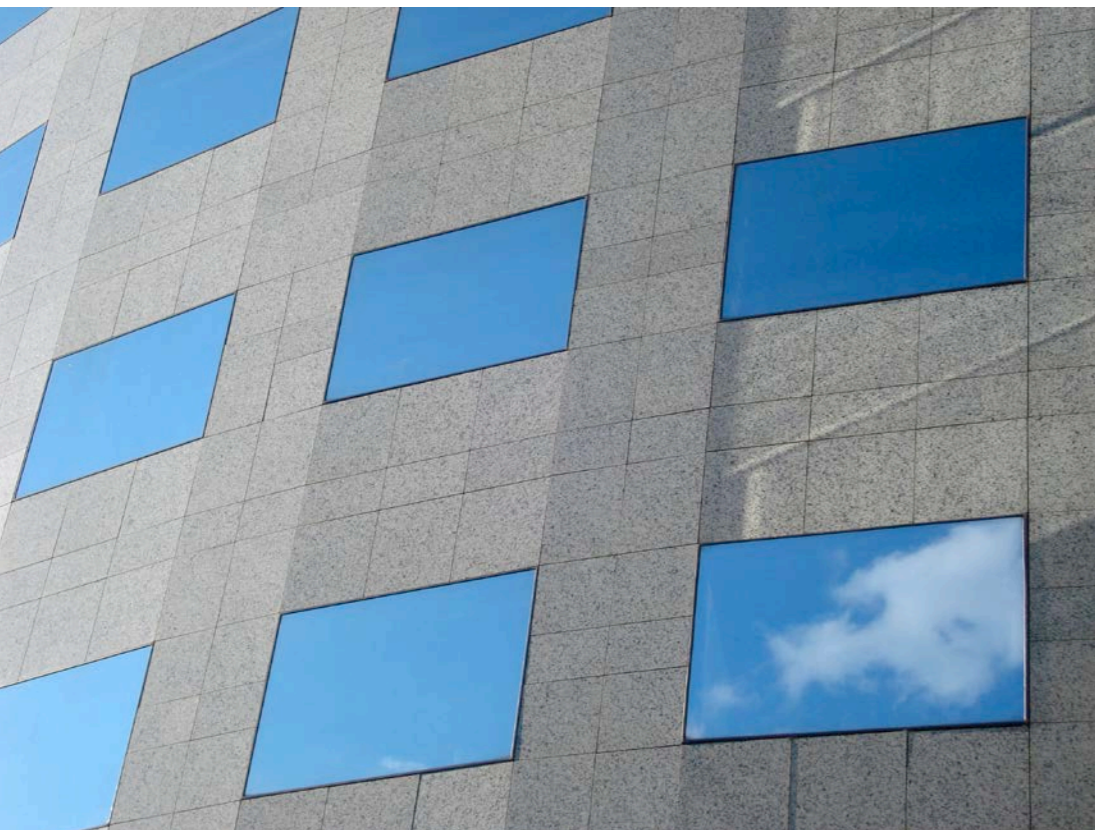
Casadei Industria ALU S.r.l.
via Tane di Baragone, 11
47899 Galazzano Serravalle
Repubblica di San Marino
Tel. +378 0549 900720

Alu Edger

Automatic edgebander for
aluminum honeycomb panels

ALU EDGER

Edgebanding for aluminum honeycomb panels with polyurethane glue for interior and exterior furniture, partition walls and ceilings for transport industry Interior Design.

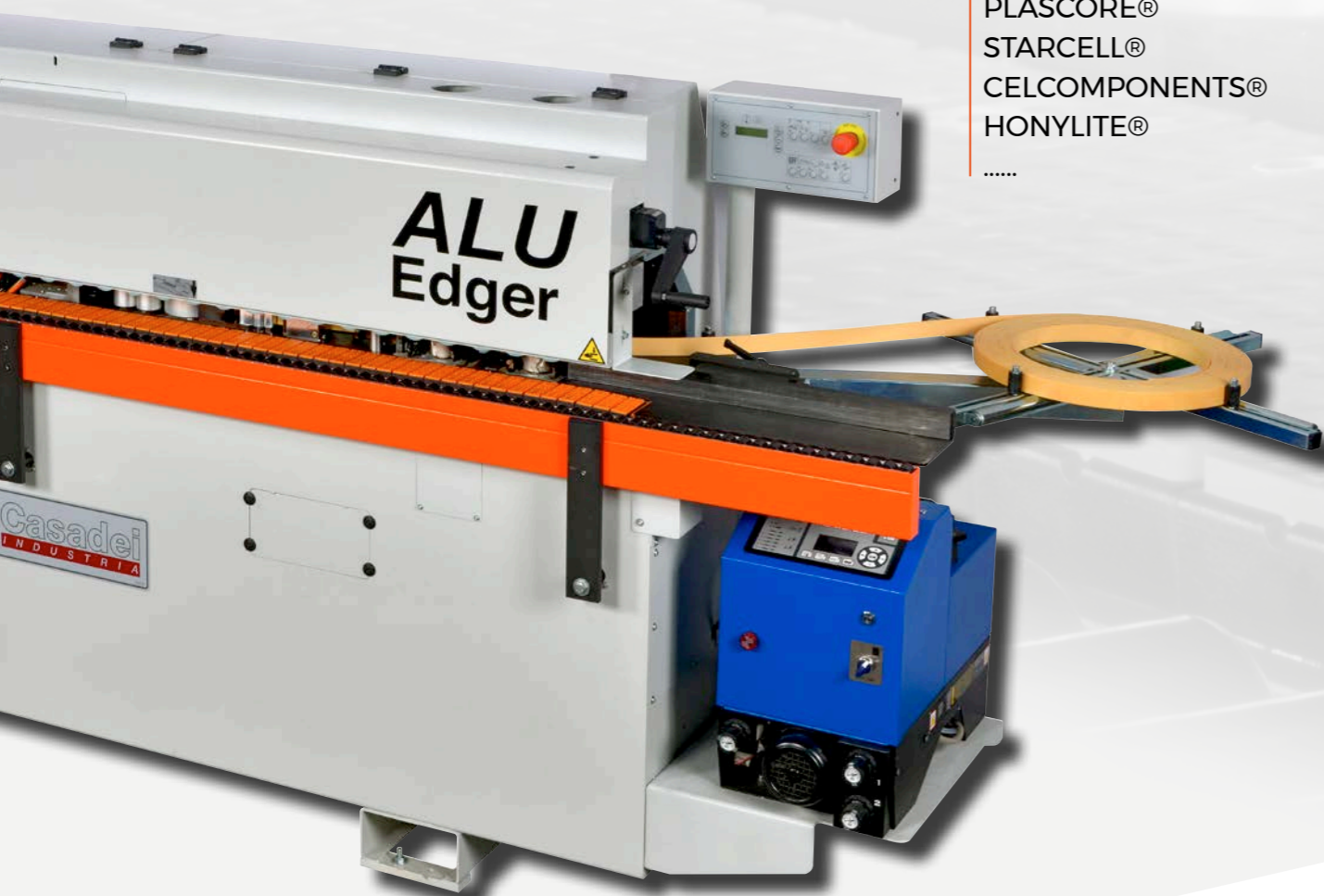


TYPES OF PANELS

ALU HONEYCOMB

- ALUCORE®
- LARCORE®
- PLASCORE®
- STARCELL®
- CELCOMPONENTS®
- HONYLITE®
-

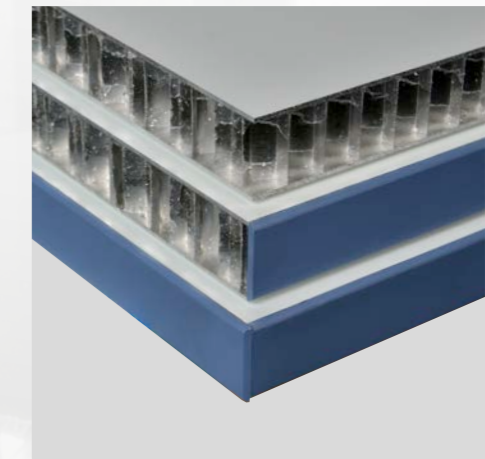
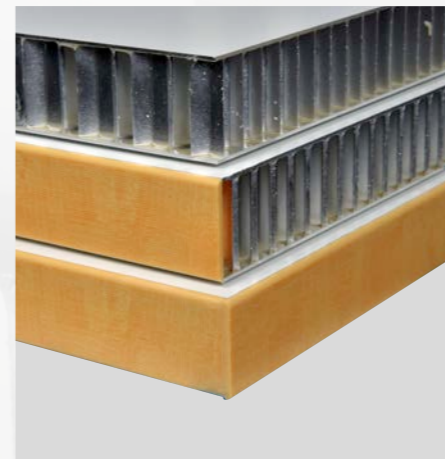
I AM "THE" ALU EDGER



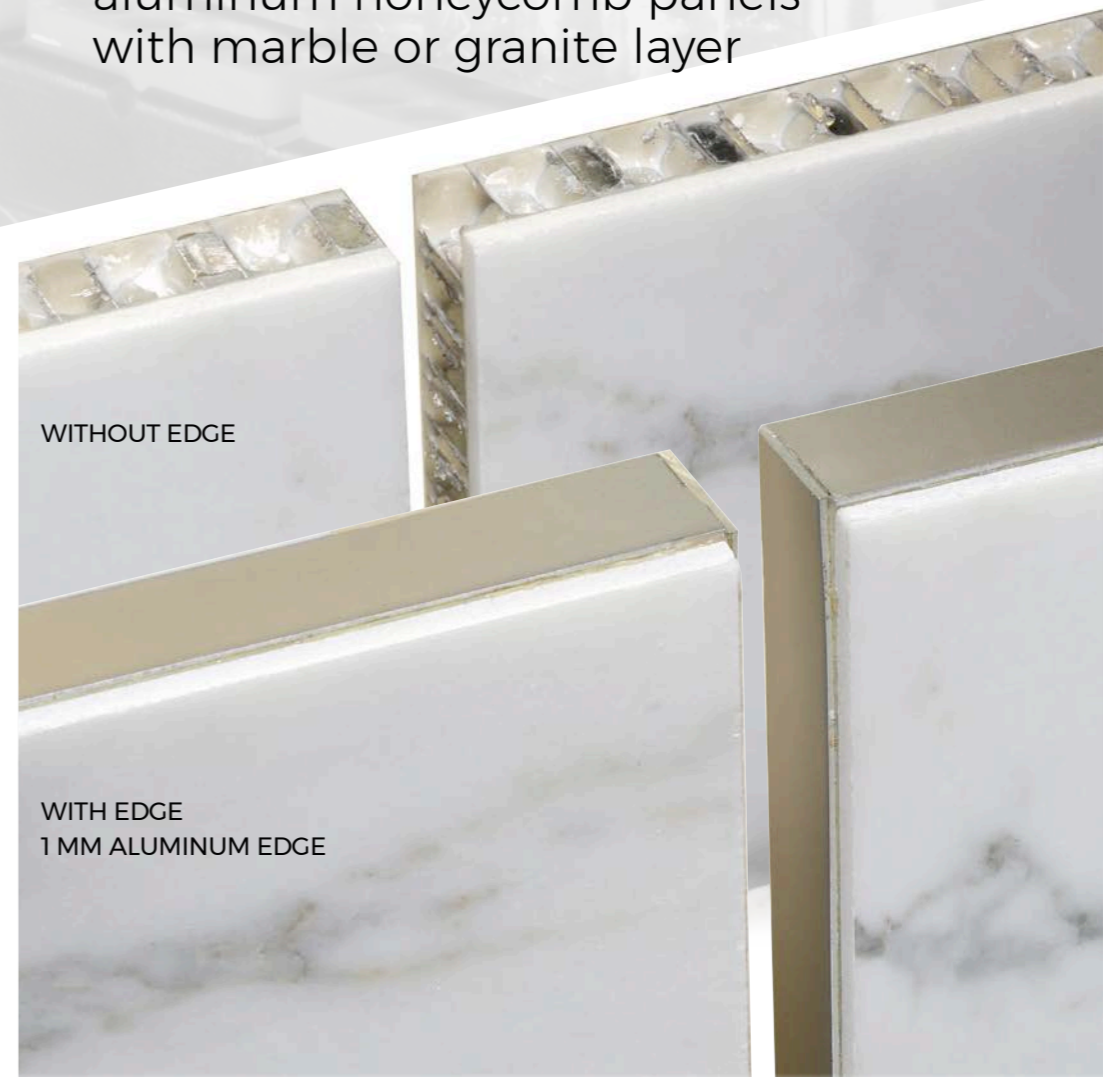
**“ALU”
HONEYCOMB
PANELS**

- ALUCORE®
- LARCORE®
- PLASCORE®
- STARCELL®
- CELCOMPONENTS®
- HONYLITE®
-

- ☐ Edgebanding for aluminum honeycomb panels



- ☐ Edgebanding for aluminum honeycomb panels with marble or granite layer



PATENTED

ADVANTAGES

- Strong edge bonding
- Perfect protection from oxidizing agents
- Better finishing of the panels
- Better protection during assembly and transport
- Hundreds of colours and finishings available

I PROTECT THE EDGE...

Alu Edger

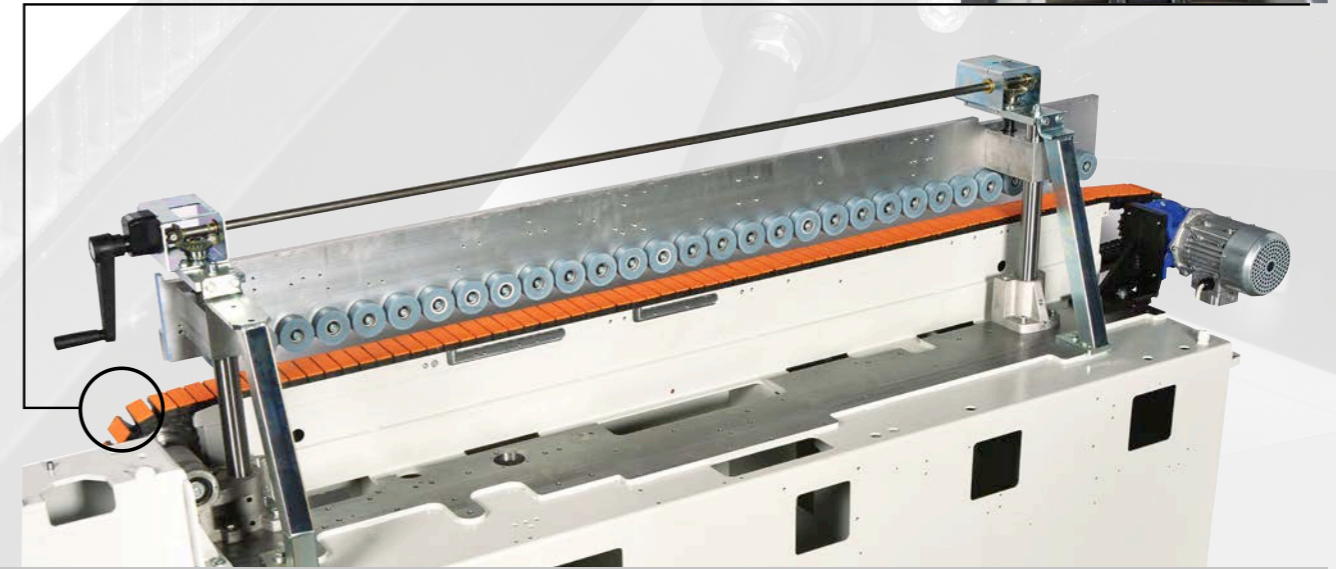
- ☐ Maximum finishing quality
- ☐ High performance
- ☐ Easy to use



PANEL FEEDING

Industrial edgebanding quality

- Firm grip of panel guaranteed by special non-slip rubber on the pads.
- Linear feeding ensured by double sliding tracks with a special geometric profile.
- Long lasting monolithic frame.



I AM WELL BUILT...

PLC CONTROLLED



Logic functioning of the machine controlled by PLC

- Full control of machine
- Message error display
- Stand-by mode for PUR Glue System
- Information exchange with the PUR Glue Unit



Logic functioning of the PUR Glue Unit controlled by PLC

- Full control of PUR Glue Unit
- Automatic Stand-by temperature
- Glue pump adjustment
- Electronic glue temperature control of:
 - Main PUR Glue pot
 - Heated hose for glue
 - PUR Glue dispensing head



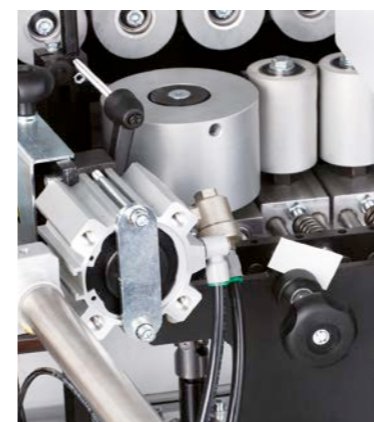
Glue dispensing on aluminum honeycomb panels (PATENTED)

- Polyurethane gluepot with temperature and humidity control
- PLC controls the entire gluepot unit with alphanumeric display
- PLC controlled and heated glue hose to reach the dispensing head
- PLC controlled, heated dispensing head with manual height glueing adjustment
- Automatic glue recirculation system for the dispensing head
- Easy cleaning for the dispensing glue head



Glue dispensing head

- Automatic Stand-by temperature
- Glue pot capacity 4 litres - 1 GAL
- Teflon coated



Pressure rollers

- Adjustment with numerical indicators
- Independent pressure adjustment
- 1st roller Ø 110 mm - 4" 21/64 motorized



Trimming cut-off

- End trims front and rear excess edge
- Working cycle controlled by PLC
- HF motor 200 Hz
- Dust extraction included



Flush trimmers

- HF motors tiltable up to 25°
- Numerical indicators for adjustments
- Copying discs
- Combined WIDIA cutters bevelled/ radius



Pre-milling (NOT SUITABLE FOR ALU HONEYCOMB WITH MARBLE AND GRANITE)

- Two opposite rotating DIAMOND cutterblocks Ø 60 mm H 64 mm
- Working cycle controlled by PLC
- Milling adjustment from 0 to 1 mm with numerical indicator
- Motors 200Hz - 12.000 RPM - 1,1 kW (each)



Edge scraping unit (Opt.)

- WIDIA knives (radius upon request)
- Numerical indicators
- Air blow for strip scraping removal



Glue scraping unit (Opt.)

- Glue scraping adjustment with WIDIA knife
- Copy bearing pads

Buffing unit (Opt.)

- Buffing unit Ø 120 mm - 4" 23/32 3000 RPM - each 0,13 kW

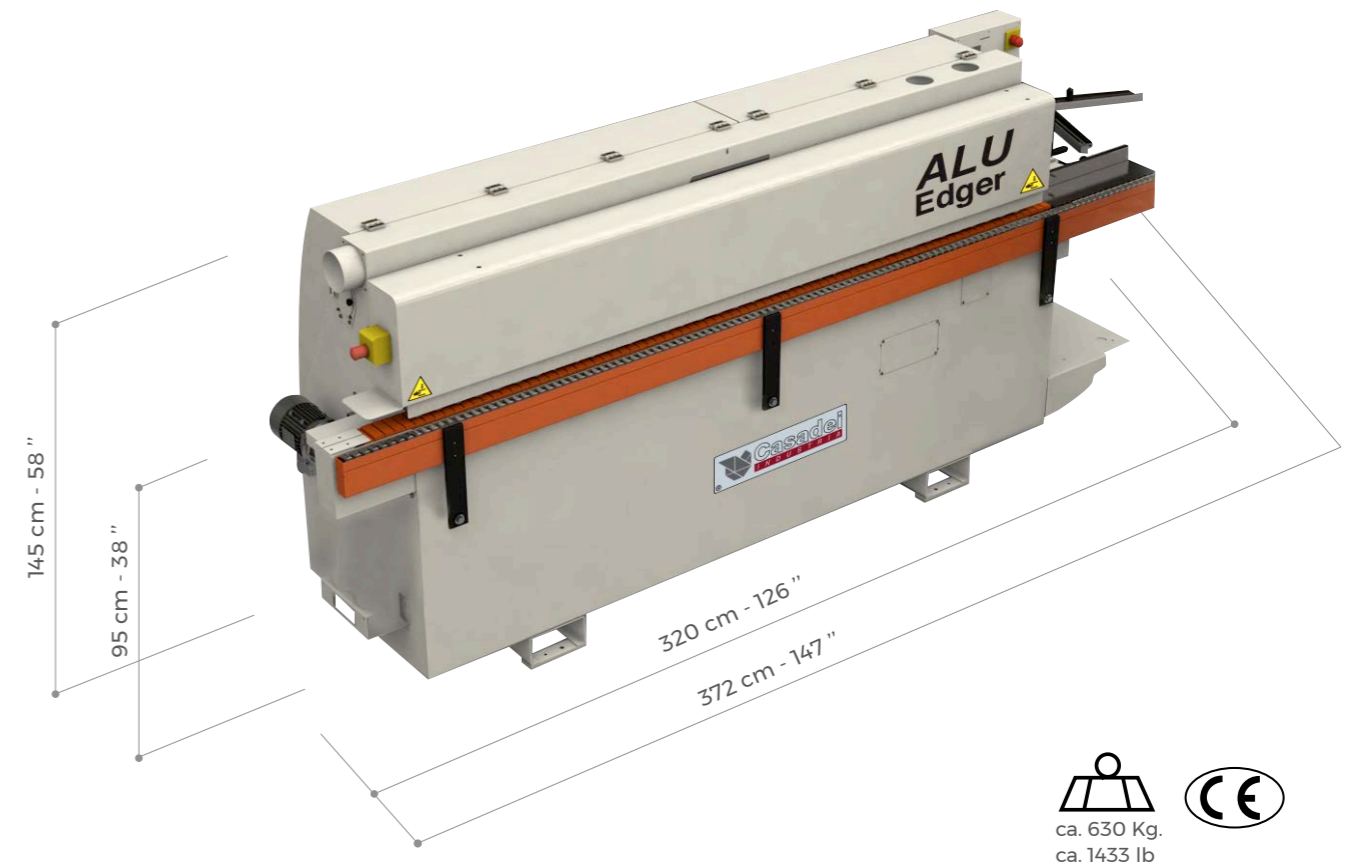
COMPOSITIONS

ALU EDGER	
Options for free spaces	
Options without occupying spaces	

TECHNICAL FEATURES

Min./max. panel height	min 8 - max 60 mm min 5/16" - max 2" 23/64
Min./max. edge thickness	1 - 2 mm - 3/64 - 5/64 (coils) 0,5 - 1 mm - 1/64 - 3/64 (strips)
Panel width	min. 95 mm - min 3" 47/64
Panel length (Side being processed)	min. 110 mm - min. 4" 21/64
Panel feed speed	11 m/min - m/-1' - 36 ft/min
Pre-milling motors (each)	200 Hz - 12.000 (RPM-U/min) - 0,75 kW
End trimming motor	200 Hz - 12.000 (RPM-U/min) - 0,27 kW
Flush trimming motors (each)	200 Hz - 12.000 (RPM-U/min) 0,50 kW (0,73kW Opt.)
Cutterblocks with combined WIDIA disposable Knives (radius/bevelled)	Ø 75 mm Z4 - (hole-Bohrung) d=Ø16 mm(r=2-3 mm)
Total power installed	5 kW

OVERALL DIMENSIONS

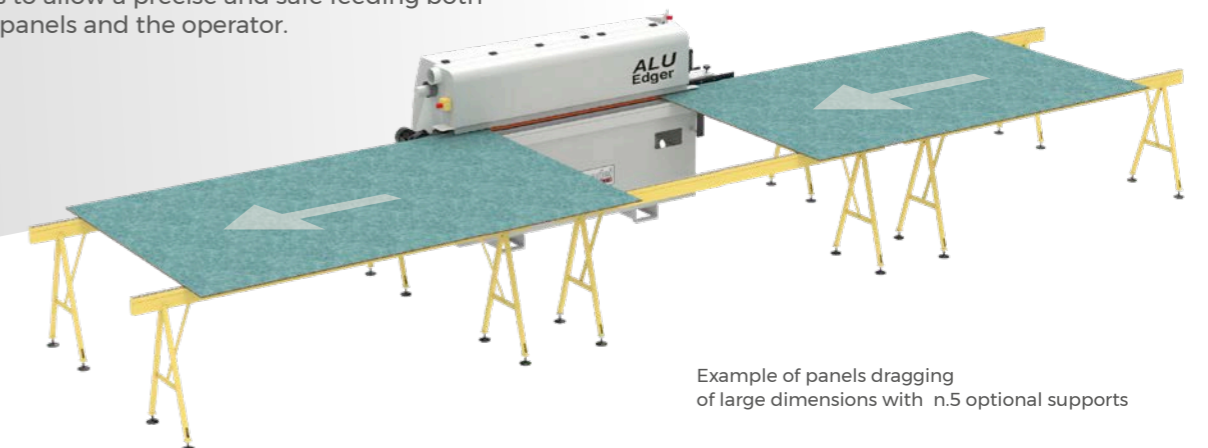


We reserve the right to make technical modifications. The machines illustrated may include fittings and accessories not included on standard machine versions. For photographic purposes, some units are shown without protections. Machines must however always be used with all protections fitted and operative.

MY MEASUREMENTS

Optional for large panels

- For a precise workmanship on large panels it is necessary to support the panel in its infeed, outfeed and when it is in front of the machine.
- The supports are equipped with adjustable feet and sliding rollers to allow a precise and safe feeding both for the large panels and the operator.



Example of panels dragging of large dimensions with n.5 optional supports