

Modular pilot-operated check valve



Technical specification

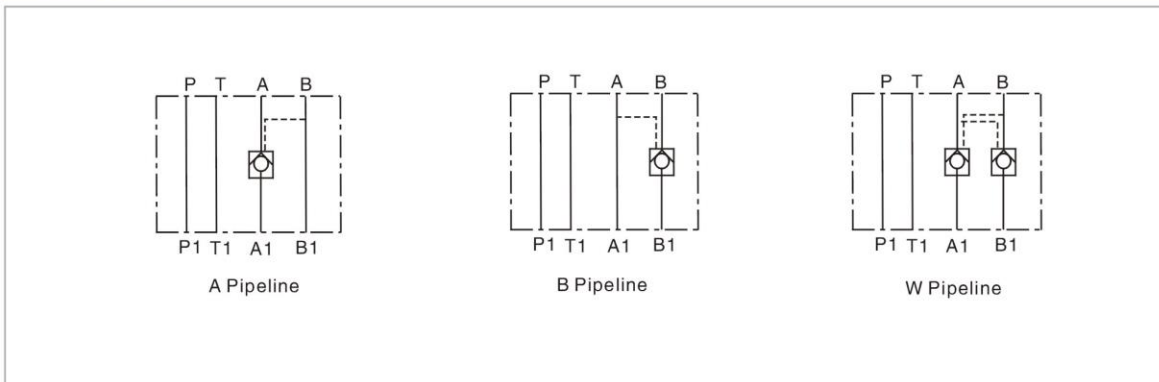
Specification	02	03	04	06
Max. working pressure (Mpa)	31.5			
Max. Flow (L/min)	60	100	200	360
Working fluid	Mineral oil; phosphate-ester			
Fluid temp. (°C)	-20~70			
Viscosity (mm ² /s)	2.8~500			
Opening pressure (MPa)	a0.05	b0.25	c0.4	
Weight (kg)	0.8	2	7	11.7
Cleanliness	The maximum allowable cleanliness of the oil should be according to 9th degree of Standard NAS1638. It is suggested that the minimum filter rating should be $\beta_{10} \geq 75$.			

Model description

DA Y- * * - * / * 50 *

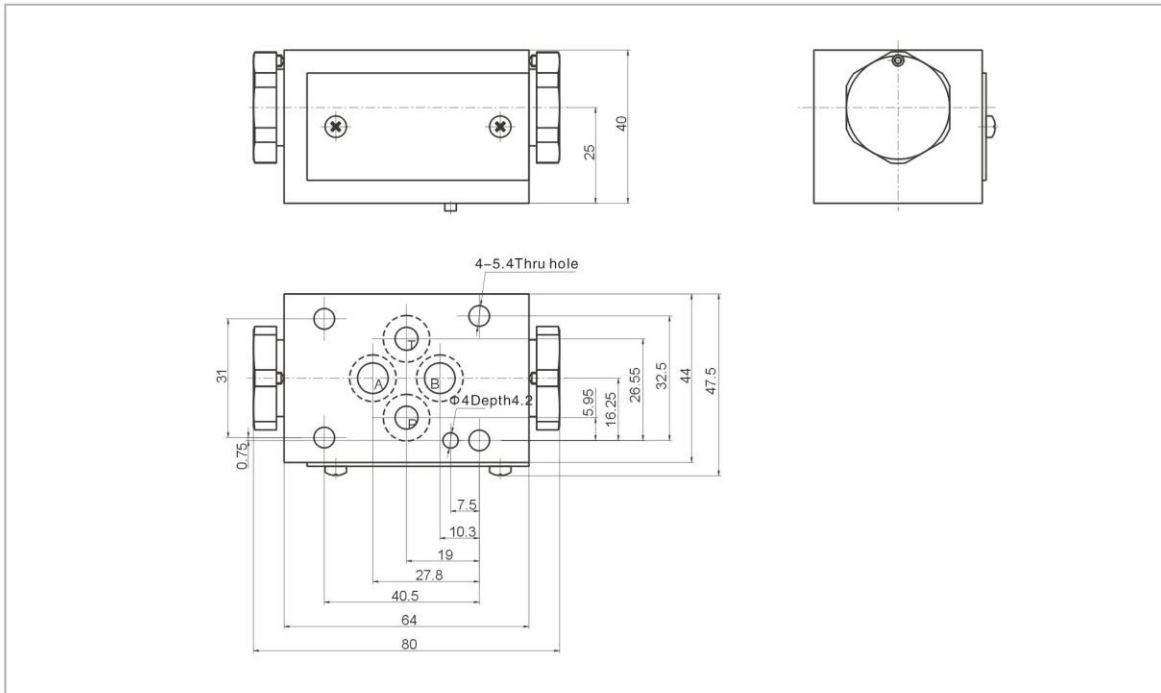
<p>Modular Pilot-Operated Check Valve</p> <p>Specification 02 NS 6 03 NS 10 04 NS 16 06 NS 22</p> <p>A A Pipeline B B Pipeline W W Pipeline</p>	<p>Remarks</p> <p>Serial number</p> <p>Seal material Omit NBR Seals V FPM Seals</p> <p>Opening pressure a 0.05 b 0.25 c 0.4</p>
---	--

Code symbol

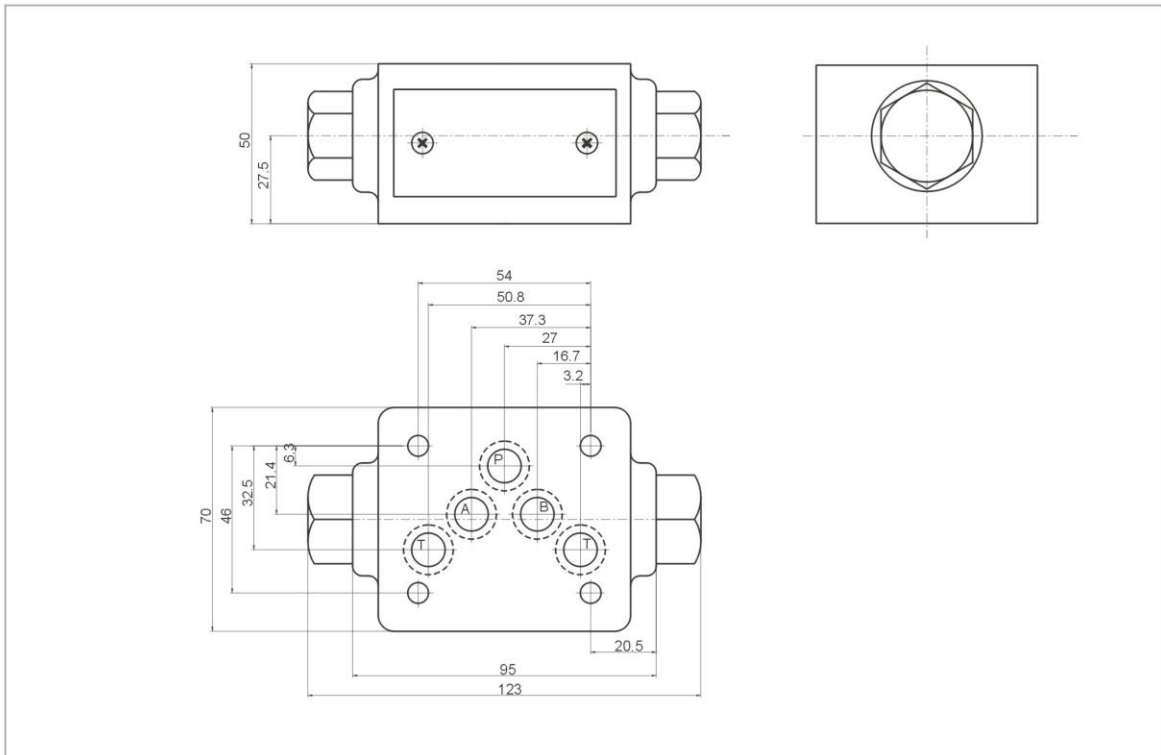


Modular pilot-operated check valve

02 External dimensions

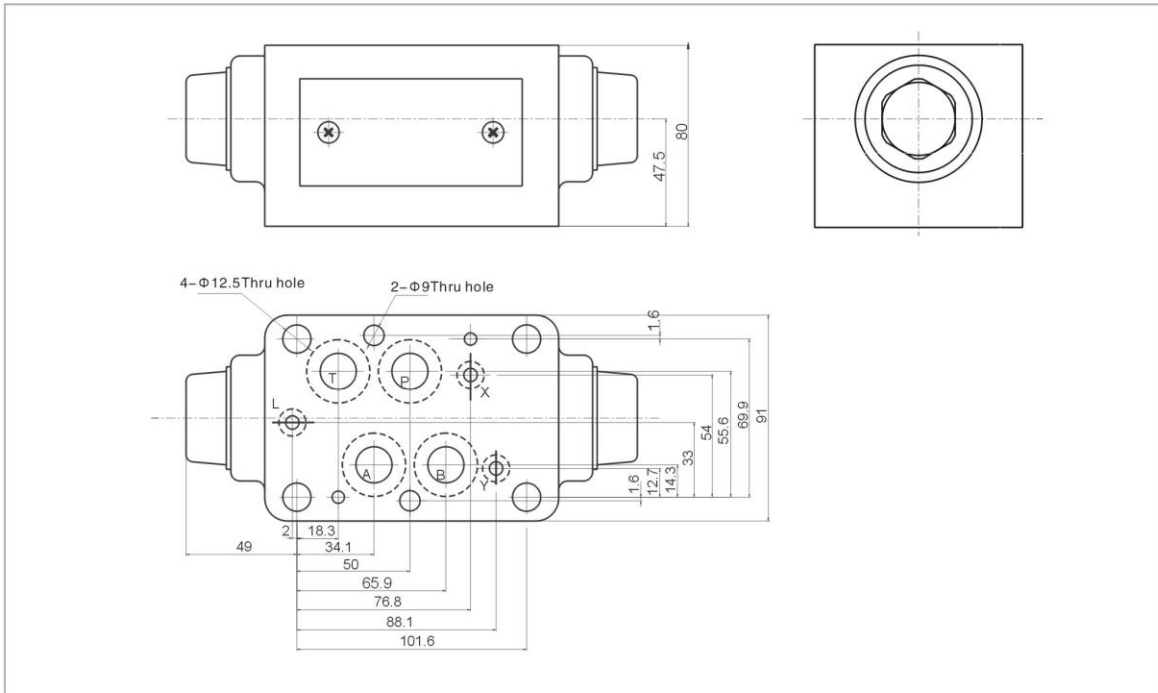


03 External dimensions



Modular pilot-operated check valve

04 External dimensions



06 External dimensions

