

Modular relief valve

Technical specification



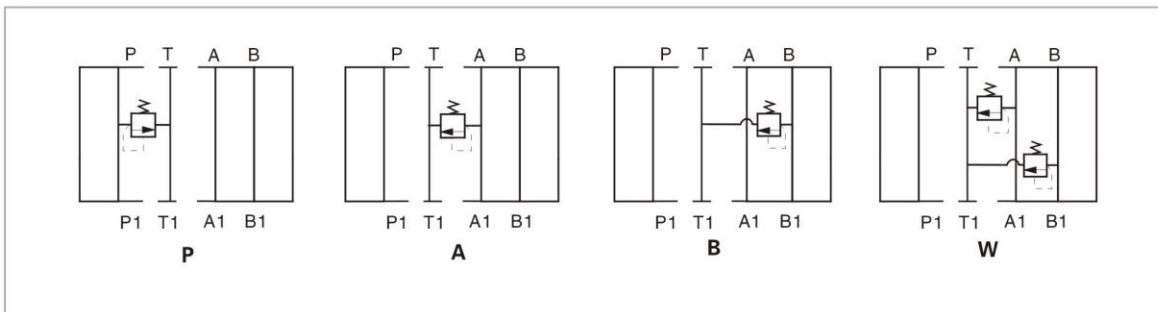
Specification	02	03
Max. working pressure (MPa)	31.5	
Max. Flow (L/min)	35	70
Working fluid	Mineral oil; phosphate-ester	
Fluid temp. (°C)	-20~70	
Viscosity (mm ² /s)	12~380	
Working press (MPa)	7 14	21 31.5
Weight (kg)	1.49 (Single) 2.19 (Double)	3.35 (Single) 4.66 (Double)
Cleanliness	The maximum allowable cleanliness of the oil should be according to 9th degree of Standard NAS1638. It is suggested that the minimum filter rating should be $\beta_{10} \geq 75$.	

Model description

DY - * * - * - * / * 70 *

<p>Modular relief valve</p> <p>Specification 02 NS 6 03 NS 10</p> <p>P P Pipeline relief A A Pipeline relief B B Pipeline relief W A B Pipeline relief</p> <p>Working pressure 5 to 5MPa 10 to 10MPa 20 to 20MPa 31.5 to 31.5MPa</p>	<p>Remarks</p> <p>Serial number</p> <p>Seal material Omit NBR Seals V FPM Seals</p> <p>8 Handle</p>
--	---

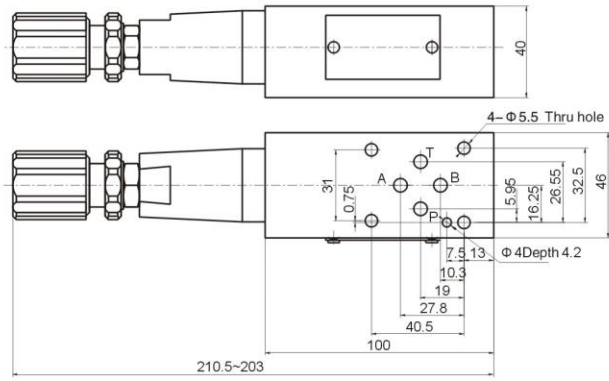
Code symbol



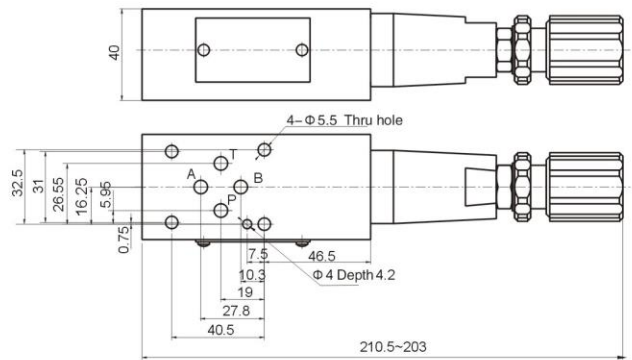
Modular relief valve

02 External dimensions

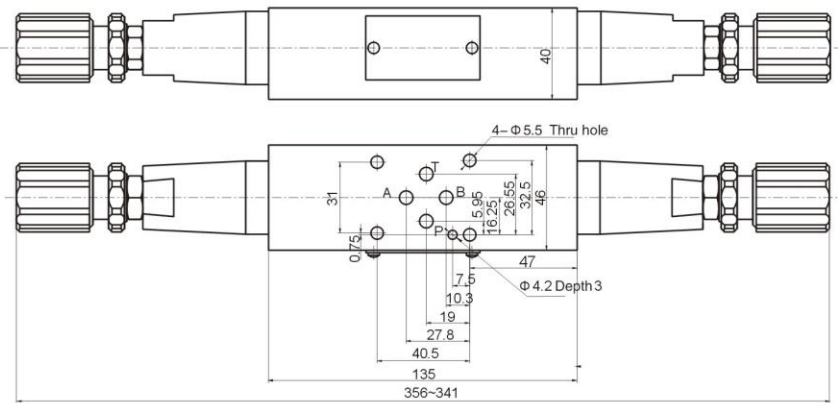
DY-02-A



DY-02-B,P



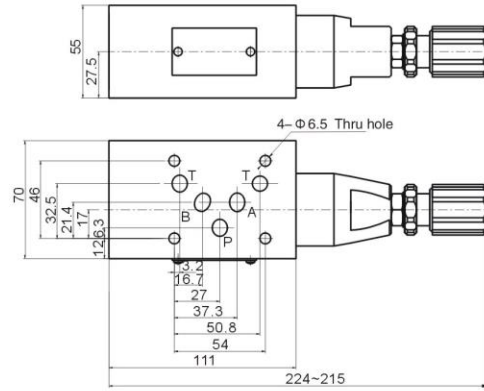
DY-02-W



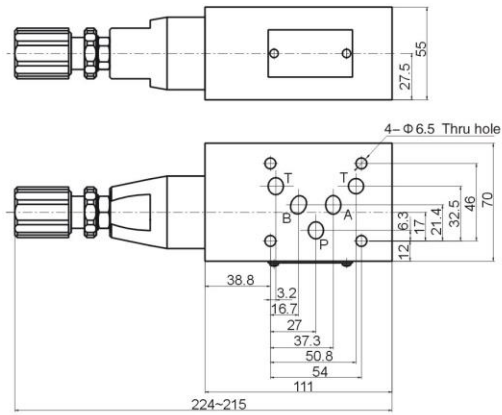
Modular relief valve

03 External dimensions

DY-03-A ...



DY-03-B,P ...



DY-03-W ...

