



D1080PD-AF
D1080D-AF

D1080PVD-AF
D1080VD-AF

D1080PD-AF / D1080D-AF D1080PVD-AF / D1080VD-AF Auto Focus High-Definition Dome Camera

Key Features

[PoC Cameras : D1080PD-AF, D1080PVD-AF]

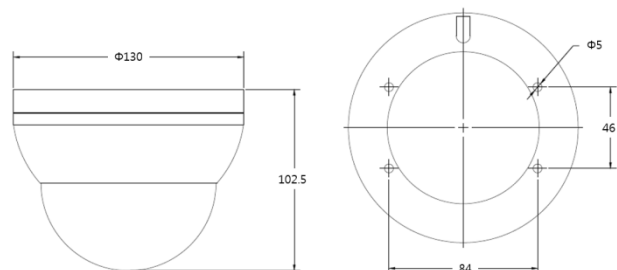
- Camera power supply through coax (PoC)
- Zoom/Focus, OSD control, Firmware upgrade through coax (CoC)
- Provides wired remote controller for OSD control and CVBS output

[Common Features]

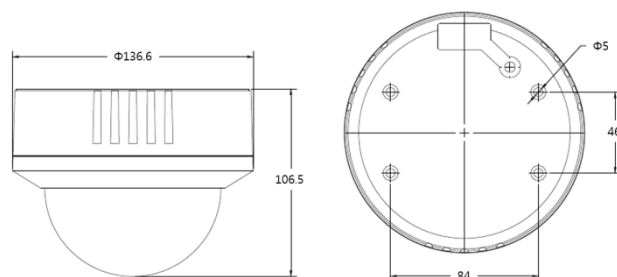
- 1/3" 2.1M CMOS progressive image sensor
- Built-in DoubleReach™ Transmitter
- HD-SDI 1080p30/25, 720p30/25 or DoubleReach™ video output
- DC Iris, 2.8mm~11mm, F1.6, IR Corrective Megapixel Lens
- One-Push Auto Focus, Zoom/Focus Control
- Horizontal/Vertical resolution over 1200TV lines
- Superior performance under low light environment (BW : 0.0005 Lux/ Color : 0.2Lux@50IRE, F.1.2, 3100K, DSS off)
- 2 different settings of Exposure & Backlight for Daytime/Nighttime
- 3DNR (Noise Reduction)
- Backlight compensation of WDR/BLC/HLC
- Privacy zone masking (Color selectable)
- True Day&Night with IR cut filter removable
- Anti-Motion Blur function for fast moving object
- De-Fog Function
- Test Pattern output (Color bar, Stress Pattern)
- Dust-proof, Water-proof of IP66 (D1080PVD-AF/D1080VD-AF)

Dimensions (Unit : mm)

D1080PD-AF / D1080D-AF



D1080PVD-AF / D1080VD-AF



Specifications

VIDEO

Camera Models		PoC	Non-PoC
		D1080PD-AF, D1080PVD-AF	D1080D-AF, D1080VD-AF
Sensor Type		1/3" 2.1Megapixel CMOS	
Total Pixels		1920(H) x 1080(V) = 2.1M pixels	
Scanning System		Progressive Scan	
Min Illumination	B/W	0.0005Lux@50IRE, F1.6, 3100K, DSS(OFF), AGC(10)	
	Color	0.2Lux@50IRE, F1.6, 3100K, DSS(OFF), AGC(10)	
Lens	Mount	D-Mount	
	Filter	True Day & Night (ICR)	
	Type	DC Iris, 2.8~11mm, F1.6, IR Corrective Megapixel Lens	
Video Output	Output	1(BNC 1.0 Vp-p, 75Ω)	
	Resolution	1080p 30/25fps, 720p 30/25fps	
	Video Format	HD-SDI (SMPTE 292M compatible) or DoubleReach™ Selectable	
	Distance	HD-SDI : Max. 200m(650ft) video transmission through 5C-HFIBT cable DoubleReach™ : Max. 400m(1,200ft) video transmission through 5C-HFIBT cable	
Video Control	Control Method	OSD Menu, DVR (Supporting remote control via CoC), CMS(Control Center)	
	AGC	1 ~ 10 steps	
	Mirror	Horizontal / Vertical	
	WDR	OFF, 1 ~ 5 steps	
	BLC	OFF, LOW, MIDDLE, HIGH	
	ACE	OFF, ON	
	DNR	OFF, LOW, MIDDLE, HIGH	
	DSS	OFF, Auto, x2 ~ x10 steps	
	White Balance	AUTO, PRESET, MANUAL	
	Electric Shutter	INDOOR, OUTDOOR, INDOOR-ANTI BLUR, OUTDOOR_ANTI BLUR, MANUAL(12 steps)	
	D-ZOOM	0 ~ 16 steps	
	ANTI-FLICKER	OFF, ON	
	Lens Shading	OFF, ON	
	HLC	0 ~ 10 steps	
	DE-FOG	OFF, ON (Auto / Manual)	
Privacy	OFF/ON (15 Zones)		

CONTROL INTERFACE

Control	CoC (Control over Coax)	RS485
---------	-------------------------	-------

ELECTRICITY

Power Consumption	PoC(DC24V ± 10%), 3W	DC 12V ± 10%, 3W / AC 24V ± 10%, 4W
-------------------	----------------------	-------------------------------------

MECHANICAL

Dimension	D1080PD/D Series	130(ø) x 102.5(H)mm
	D1080PVD/VD Series	136.6(ø) x 106.5(H)mm
Weight	D1080PD/D Series	370g
	D1080PVD/VD Series	770g

ENVIRONMENTS

Operation Temp. / Humidity	-10 °C ~ 50 °C / 0%RH ~ 80%RH
----------------------------	-------------------------------

CERTIFICATIONS

Certifications	KC, FCC, CE, RoHS
----------------	-------------------