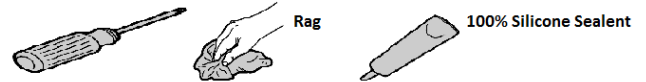


MODEL :	HTB-BALINO-201	HTB-ELMOND-201	
----------------	----------------	----------------	--



Log on to www.haustern.com for
more information on terms and conditions

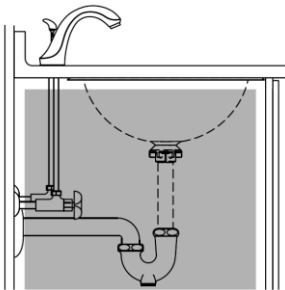
This specification is subject to change without notice. FIAMMA TRADING SDN. BHD. will not be held responsible for the use of superseded or voided specifications. Fabricator must check for cut-out accuracy.



FOREWOOD

- These instructions are only a guide and all Haustern products must be installed by a qualified contractor.
- Ensure that the correct tools are used in each step of these procedures.
- Ensure water is turned off before the installation of the wash basin, and should have been aside of sewage and water supply pipes.
- Prior to installation remove the basin from carton and inspect for transport damage

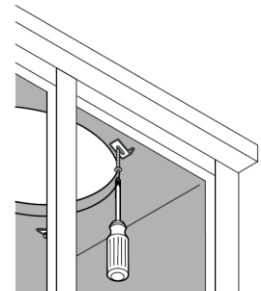
1. Verify cabinet clearance



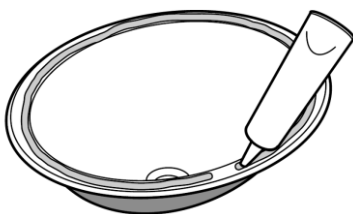
2. Clean the underside of the countertop and the rim of the sink.



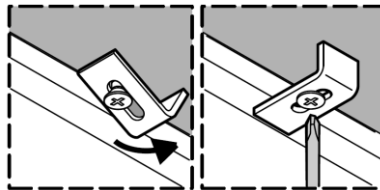
3. Loosely install the clips.



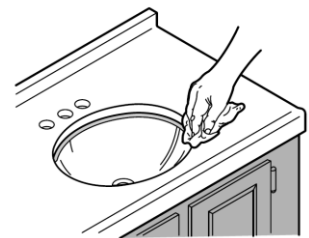
4. Use neutral cure, mildew resistant, sanitary grade silicone.



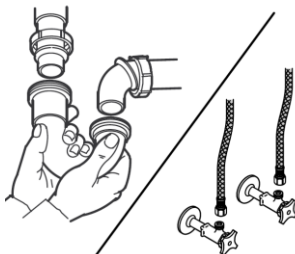
5. Place the basin under the opening. Hold the sink in place and rotate each clip over the ring and then even tighten the clip to secure.



6. Clean away excess silicone from around the basin. **Use of epoxy two part adhesives will void warranty.*



6. Complete the water supply and drain connections.



7. Run water into sink and check for leak.

