



F21 Lite

Fingerprint time attendance and access control terminal

F21 Lite is a time attendance and access control terminal with advanced BiOD technology. It possesses outstandingly high identification rate towards dry, wet and rough finger, Anti-Highlight and Side-Beams minimise the interference occurred during fingerprint verification and Infrared technology enables the device to function automatically when fingerprints are detected, reducing unnecessary electrical usage thus saving energy.

In addition, with the brand new ZMM220 hardware platform, its clock rate can attain 1.2GHZ. Such speedy hardware platform and fingerprint algorithm greatly enhance the speed of fingerprint verification.

Features

- 2.4-inch TFT color screen
- BiOD fingerprint reader with Anti-Interference Technology and Sensor-Activation function.
- Multiple Verification Modes: Multi-verification methods (card is optional) providing user various choices
- Full Access Control Features: Anti-passback, access control interface for 3rd party electric lock, door sensor, exit button, alarm and doorbell
- Built-in auxiliary input with enhanced flexibility to link with wired detector or emergency switch
- Wireless door bell (Optional)

Specifications

| | |
|--------------------------|---|
| Display | 2.4-inch TFTLCD Color Screen |
| Fingerprint Capacity | 3000 |
| Card Capacity | 5000(Optional) ID or mifare card |
| Transaction Capacity | 100,000 |
| Sensor | BioID Sensor |
| Algorithm Version | ZKFinger VX10.0 |
| Communication | RS232/485, TCP/IP,USB-host |
| Access Control Interface | 3rd Party Electric Lock, Door Sensor, Exit Button, Alarm, Doorbell |
| Wiegand Signal | Input, Output,SRB |
| Aux. Input | 1ea for linkage function |
| Functions | DST,Automatic Status Switch, Anti-passback,Scheduled-Bell,Printer(Optional) |
| Power Supply | 12V DC,3A |
| Operating Temperature | 0 °C- 45 °C |
| Operating Humidity | 20%-80% |

Optional Accessories



RFID Reader



Exit Button



Electric Lock



Alarm

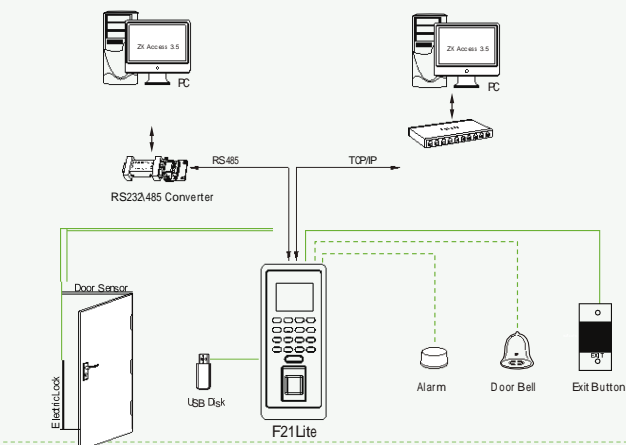


Sensor



Wireless Door Bell

Configuration



Dimensions (mm)

