



JN *Jet Nozzle*





Introduction

Used in large occupied areas where ceiling or ducting installations are unsuitable, the Jet Nozzle is capable to direct and deliver up high flow rate over distance up to 30m.

It is suited for locations with ever-changing environments and operating parameters. Designed to be aerodynamically contoured, Jet Nozzle is able to operate with minimum noise, pressure loss and turbulence.

Flow direction can be easily adjusted up to 30° multi-directional.

CONSTRUCTIONS & MATERIALS

- Capability of:
 - i) High volume flowrate
 - ii) Long throw up to 30m
- Adjustable flow deflection up to 30° multi-directional

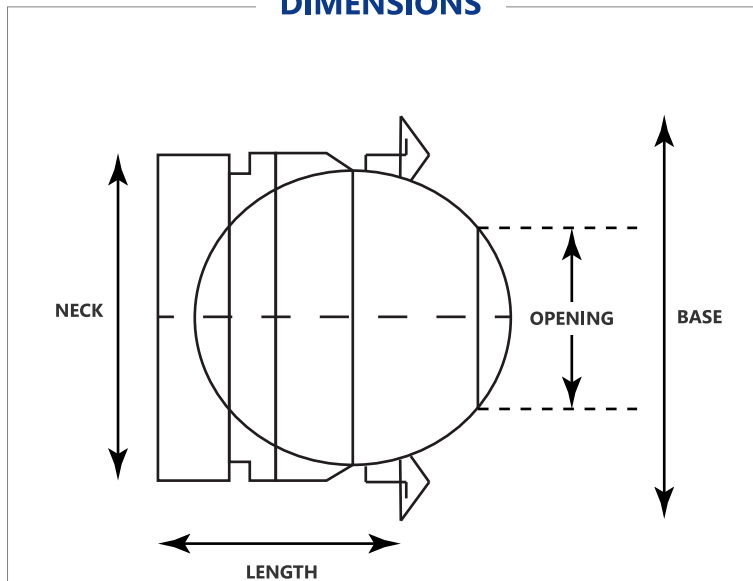
Nozzle Construction



Extruded Aluminium



DIMENSIONS



Opening Dimensions

| Order Size (Inch) | Neck Size (mm) | Base Size (mm) | Opening (mm) | Length (mm) |
|-------------------|----------------|----------------|--------------|-------------|
| 6" | 158 | 212 | 82 | 100 |
| 8" | 199 | 255 | 105 | 120 |
| 10" | 247 | 303 | 134 | 144 |
| 12" | 311 | 380 | 184 | 155 |
| 16" | 397 | 465 | 230 | 180 |

TECHNICAL PERFORMANCE DATA

| Order Size | | V _T | L _T = 10 m | | | L _T = 20 m | | | L _T = 30 m | | |
|------------|------|----------------|-----------------------|----|-----------------|-----------------------|----|-----------------|-----------------------|----|-----------------|
| mm | inch | | V | NC | ΔP _T | V | NC | ΔP _T | V | NC | ΔP _T |
| 160 | 6.0 | 0.25 | 23 | - | 10 | 46 | - | 45 | 69 | 35 | 100 |
| 200 | 8.0 | | 29 | - | - | 61 | - | 28 | 85 | 27 | 60 |
| 250 | 10.0 | | 37 | - | - | 76 | - | 20 | 106 | 22 | 35 |
| 315 | 12.0 | | 50 | - | - | 98 | - | 11 | 150 | 20 | 25 |
| 400 | 16.0 | | 65 | - | - | 129 | - | - | 195 | - | 12 |
| 160 | 6.0 | 0.5 | 46 | - | 45 | 92 | 44 | 175 | 138 | 55 | 100 |
| 200 | 8.0 | | 61 | - | 28 | 121 | 38 | 100 | 182 | 50 | 250 |
| 250 | 10.0 | | 76 | - | 20 | 152 | 34 | 70 | 229 | 45 | 125 |
| 315 | 12.0 | | 98 | - | 11 | 195 | 28 | 45 | 293 | 40 | 90 |
| 400 | 16.0 | | 129 | - | - | 258 | 20 | 20 | 387 | 33 | 45 |
| 160 | 6.0 | 1.0 | 92 | 44 | 175 | - | - | - | - | - | - |
| 200 | 8.0 | | 121 | 38 | 100 | 242 | - | 400 | - | - | - |
| 250 | 10.0 | | 152 | 34 | 70 | 305 | 53 | 240 | - | - | - |
| 315 | 12.0 | | 195 | 28 | 45 | 390 | 48 | 150 | 585 | 53 | 330 |
| 400 | 16.0 | | 258 | 20 | 20 | 516 | 42 | 80 | 773 | 53 | 180 |

| Label | Description |
|-----------------|-------------------------|
| L _T | Throw distance, m |
| V | Volume Flowrate, L/s |
| NC | Noise Criteria |
| ΔP _T | Total Pressure Loss, Pa |

JET NOZZEL TECHNICAL SPECIFICATION

Frame Construction

1. Frame to be in extruded aluminum. Frame thickness should be in minimum 1.0mm thick.

Nozzle Construction

1. Nozzle to be in extruded aluminum.
2. Nozzle internal aerodynamic designed to compress the airflow to create a jet throw performance.
3. Nozzle to be adjustable up to 30° multi-direction.

Finishing

1. Finishing should be in powder coated RAL 9010 SG white matt, unless otherwise stated.

Performance








1. Nozzle core are adjustable for directional air distribution.
2. Jet Diffusers are designed to be high wall mounted or ceiling mounted. Round duct connection with damper should be installed at the neck of the diffuser for volume control purpose, unless otherwise stated.
3. Jet Nozzle's aerodynamic design is able to produces a jet throw without compromising noise level.



JN | *Jet Nozzle*



Products Range

- Grilles 
- Diffusers 
- Dampers 
- Fire & Smoke Protection 
- VAV 
- Others 
- Accessories 



Prudent Aire Sdn Bhd 514037-D
Lot 2102, Jalan KPB12, Off Jalan Suria Park 1, Kg Baru Balakong,
43300 Seri Kembangan, Selangor Darul Ehsan, Malaysia
Tel : +603-9100 3858 (HL) / 9101 3869 / 9101 5868
Fax : +603-9100 4868 Email : sales@prudentaire.com

www.prudentaire.com