



H Series 1000 Ice Cube Machine

H Series 1000 Ice Cube Machine

Model: HDT1000A-251ZT HYT1000A-251ZT



H1000 Ice Machine on H530 Bin

- Up to 446kgs (983lbs) daily ice production and only 30.00" (76.00 cm) wide
- Use R-410A CFC-free refrigerant which lowers global warming potential by 48%
- Easy access front facing evaporator
- All plastic interior, no exposed tubes or wires, smooth rounded corners for fast easy wipe downs
- The food zone is sealed from above and on the back of the door panel with commercial grade rubber gaskets
- Water shield, distribution tube, pump, floats, and trough removable by hand (no tools required). Fast and easy
- Top air discharge, transfers air discharge from the sides of the machine to the top by having the louvered panel on the top of the machine rather than the sides. Re-directs the hot air from the ice machine toward the ceiling rather than directly into the working kitchen environment

Specifications

BTU Per Hour:
16,250 (average), 18,600 (peak)

Compressor:
Nominal Rating: 3/4HP

Refrigerant:
R-410A

Ice Machine Electric
220-240/50/1 standard

Total Circuit Ampacity:

Air Cooled: 13.8A

Power Consumption:Air
Cooled: 1980W

Maximum Fuse Size: 20A

HACR-type circuit breakers can be used in place of fuses

Operating Limits:

- Ambient Temperature Range: 1.7°C to 43.3°C
- Water Temperature Range: 1.7°C to 32.2°C
- Water Pressure Ice Maker Water In:
Min. 20 psi (137.9kPa)
Max. 80 psi (551.1kPa)



Cube Size Available



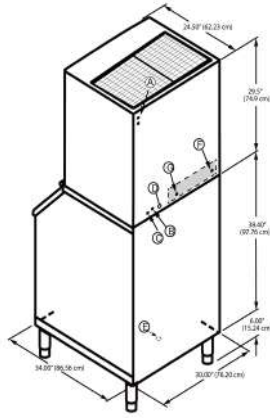
Dice
7/8" X 7/8" X 7/8"
2.22 X 2.22 X 2.22 (cm)





H Series 1000 Ice Cube Machine

H1000 on H530 Storage Bin



- Ⓐ Electrical Entrance (2) Options
- Ⓑ 3/8" (0.95 cm) F.P.T. Ice Making Water Inlet
- Ⓒ 1/2" (1.27 cm) F.P.T. Ice Making Water Drain
- Ⓓ 1/2" (1.27 cm) Auxiliary Base Drain Socket
- Ⓔ 3/4" (1.91 cm) Bin Drain
- Ⓕ 3/8" (0.95 cm) F.P.T. Water Condenser Inlet (water-cooled units)
- Ⓖ 1/2" (1.27 cm) F.P.T. Water Condenser Outlet (water-cooled units)

*Installation Note - Minimum installation clearance:
Sides: 0, Top: 12" (30.5 cm), back: 5" (12.7cm).*

Space-Saving Designs



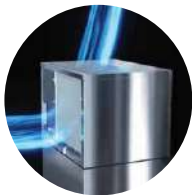
| | H1000 | H530 |
|-------------|---------|----------|
| Height | 74" | 188cm |
| Width | 30.00" | 76.20 cm |
| Depth | 34.00" | 86.50 cm |
| Bin Storage | 463 lbs | 210 kg |

Height includes adjustable bin legs 6.00" to 7.00" (15.24 cm to 17.78 cm) set at 6.00" (15.24 cm).

| Model | Ice Shape | Ice Production 24 Hours | | Power Usage kWh/100 lbs. @90°Air/70°F | Water Usage 100 lbs. 45.4 kgs. of Ice |
|----------------|-----------|-------------------------|--------------------|---|---|
| | | 70°Air/ 50°F Water | 90°Air/ 70°F Water | | |
| HDT1000A-251ZT | dice | 436 kgs | 357kgs | 6.18 | 71.8 |
| | | 961lbs | 787lbs | | |
| HYT1000A-251ZT | half dice | 445kgs | 364kgs | 6.18 | 71.8 |
| | | 981lbs | 802lbs | | |

Order ice storage bin separately. Suffix of model "A" means air cooled condenser

Top Air Discharger



Top air discharge, transfers air discharge from the sides of the machine to the top by having the louvered panel on the top of the machine rather than the sides. Re-directs the hot air from the ice machine toward the ceiling rather than directly into the working kitchen environment

Easy Access to Parts of Water System



Water shield, distribution tube, pump, floats, and trough removable by hand

Easy Access to Air Filter



Easy to clean, reusable air filter protects condenser from lint, grease and dust.