



# H Series 700 Ice Cube Machine

H Series 700 Ice Cube Machine

Model:  HDT0700A-251ZT     HYT0700A-251ZT



H700 Ice Machine on H530 Bin

- Up to 321kgs (708 lbs) daily ice production and only 30.00" (76.00 cm) wide
- Use R-410A CFC-free refrigerant which lowers global warming potential by 48%
- Easy access front facing evaporator
- All plastic interior, no exposed tubes or wires, smooth rounded corners for fast easy wipe downs
- The food zone is sealed from above and on the back of the door panel with commercial grade rubber gaskets
- Water shield, distribution tube, pump, floats, and trough removable by hand (no tools required). Fast and easy
- Top air discharge, transfers air discharge from the sides of the machine to the top by having the louvered panel on the top of the machine rather than the sides. Re-directs the hot air from the ice machine toward the ceiling rather than directly into the working kitchen environment

**Specifications**

**BTU Per Hour:**  
9,000 (average), 13,900 (peak)

**Compressor:**  
Nominal Rating: 3/4HP

**Refrigerant:**  
R-410A

Ice Machine Electric  
220-240/50/1 standard

**Total Circuit Ampacity:**

Air Cooled: 8.6A

**Power Consumption:**Air  
Cooled: 1121W

**Maximum Fuse Size:**20A

HACR-type circuit breakers can be used in place of fuses

**Operating Limits:**

- Ambient Temperature Range: 1.7°C to 43.3°C
- Water Temperature Range: 1.7°C to 32.2°C
- Water Pressure Ice Maker Water In:  
Min. 20 psi (137.9kPa)  
Max. 80 psi (551.1kPa)



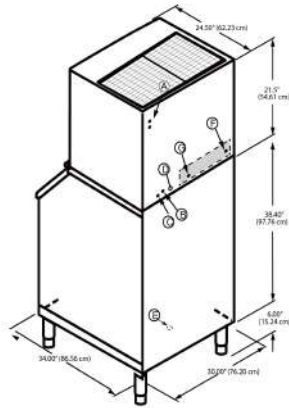
Dice  
7/8" X 7/8" X 7/8"  
2.22 X 2.22 X 2.22 (cm)





H Series 700 Ice Cube Machine

H700 on H530 Storage Bin



- Ⓐ Electrical Entrance (2) Options
- Ⓑ 3/8" (0.95 cm) F.P.T. Ice Making Water Inlet
- Ⓒ 1/2" (1.27 cm) F.P.T. Ice Making Water Drain
- Ⓓ 1/2" (1.27 cm) Auxiliary Base Drain Socket
- Ⓔ 3/4" (1.91 cm) Bin Drain
- Ⓕ 3/8" (0.95 cm) F.P.T. Water Condenser Inlet (water-cooled units)
- Ⓖ 1/2" (1.27 cm) F.P.T. Water Condenser Outlet (water-cooled units)

Installation Note - Minimum installation clearance:  
Sides: 0, Top: 12" (30.5 cm), back: 5" (12.7cm).

Space-Saving Designs



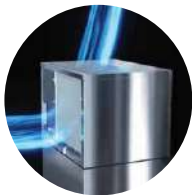
	H700 H530
Height	66" 168cm
Width	30.00" 76.20 cm
Depth	34.00" 86.50 cm
Bin Storage	463 lbs 210 kg

Height includes adjustable bin legs 6.00" to 7.00" (15.24 cm to 17.78 cm) set at 6.00" (15.24 cm).

Model	Ice Shape	Ice Production 24 Hours		Power Usage kWh/100 lbs. @90°Air/70°F	Water Usage 100 lbs. 45.4 kgs. of Ice
		70°Air/ 50°F Water	90°Air/ 70°F Water		
HDT0700A-251ZT	dice	290kgs	228kgs	5.36	71.8
		639lbs	502lbs		
HYT0700A-251ZT	half dice	309kgs	240kgs	5.36	71.8
		681lbs	529lbs		

Order ice storage bin separately. Suffix of model "A" means air cooled condenser

Top Air Discharger



Top air discharge, transfers air discharge from the sides of the machine to the top by having the louvered panel on the top of the machine rather than the sides. Re-directs the hot air from the ice machine toward the ceiling rather than directly into the working kitchen environment

Easy Access to Parts of Water System



Water shield, distribution tube, pump, floats, and trough removable by hand

Easy Access to Air Filter



Easy to clean, reusable air filter protects condenser from lint, grease and dust.

©2023 06/08 Manitowoc 09/26 Continuing product improvement may necessitate change of specifications without notice.