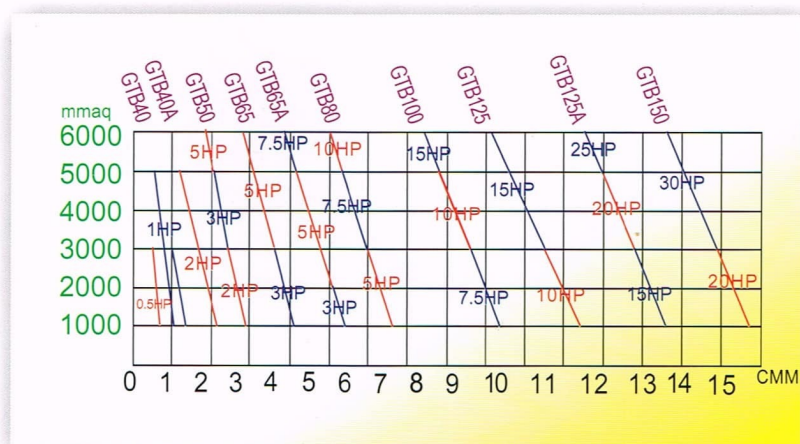


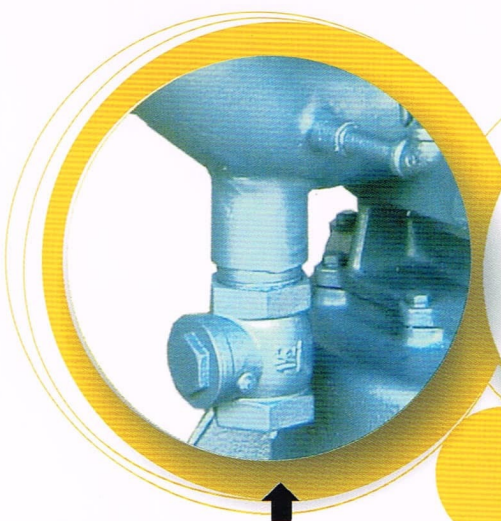
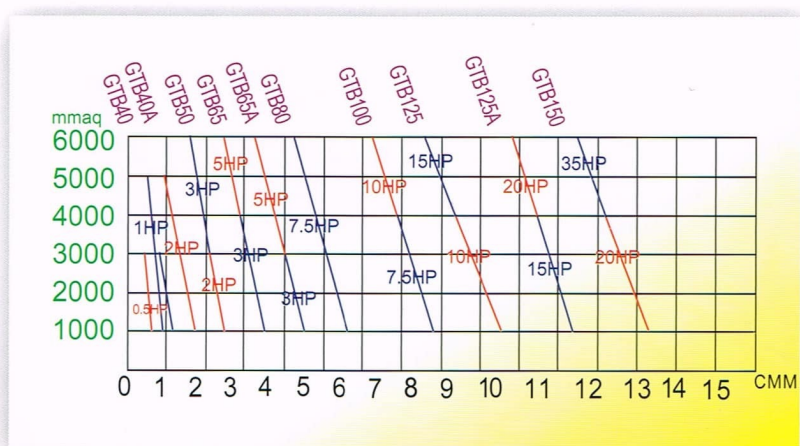
GTB型導流散熱立式魯氏鼓風機性能曲線圖 60Hz

Performance Curve Drawing 60 Hz of GTB Type Re-circulated and Cooling Vertical-type Roots Blower

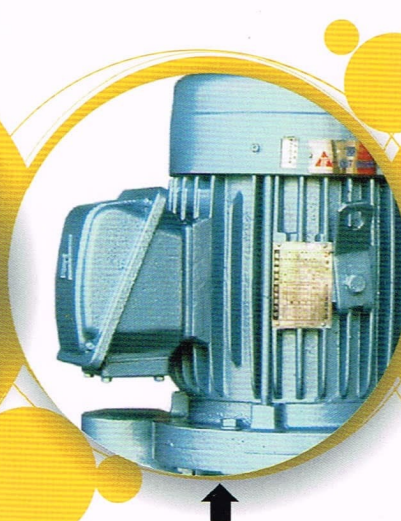


GTB型導流散熱立式魯氏鼓風機性能曲線圖 50Hz

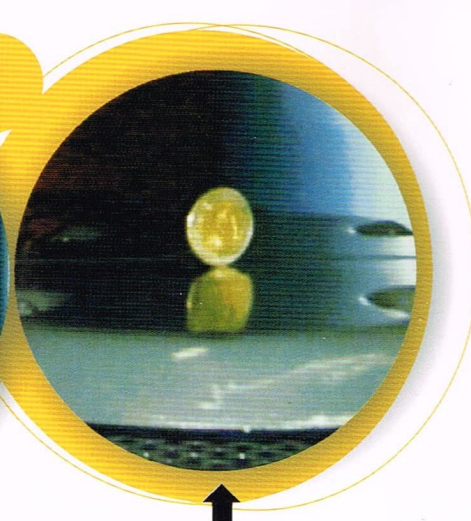
Performance Curve Drawing 50 Hz of GTB Type Re-circulated and Cooling Vertical-type Roots Blower



逆轉保護裝置
Reverse Rotation Protection Device



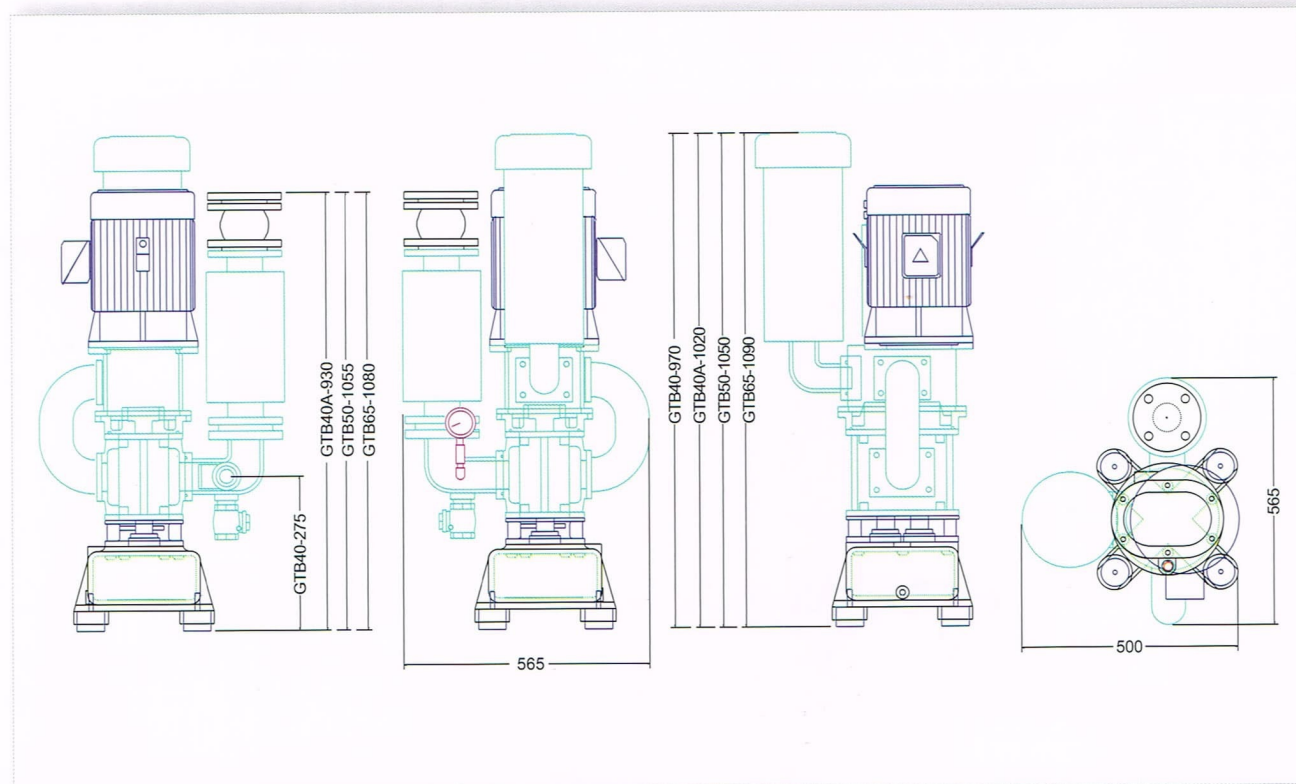
採用屋外型馬達
Adoption of Outdoor motor



運轉時硬幣可豎立
Coin is erectile during rotation

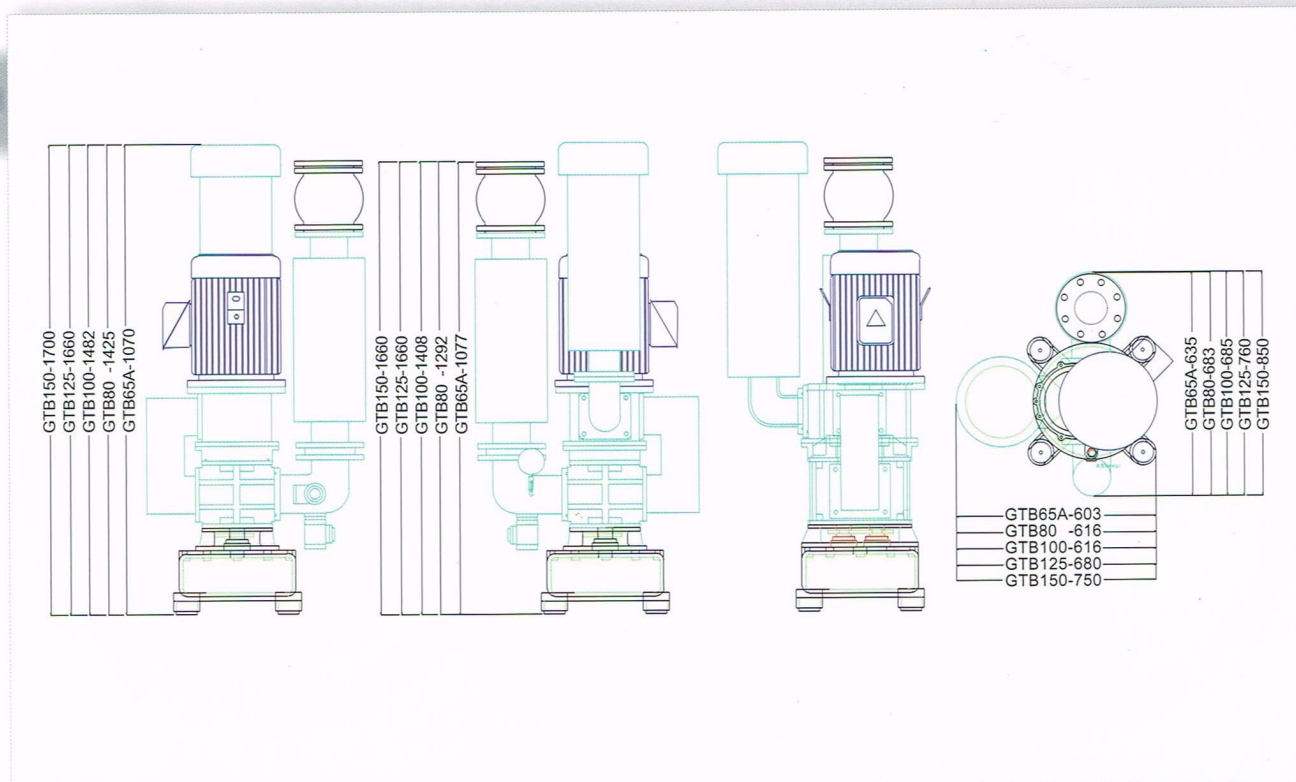
GTB 40、40A、50、65 外觀尺寸圖

Appearance Dimensional Drawing of GTB 40、40A、50 & 65



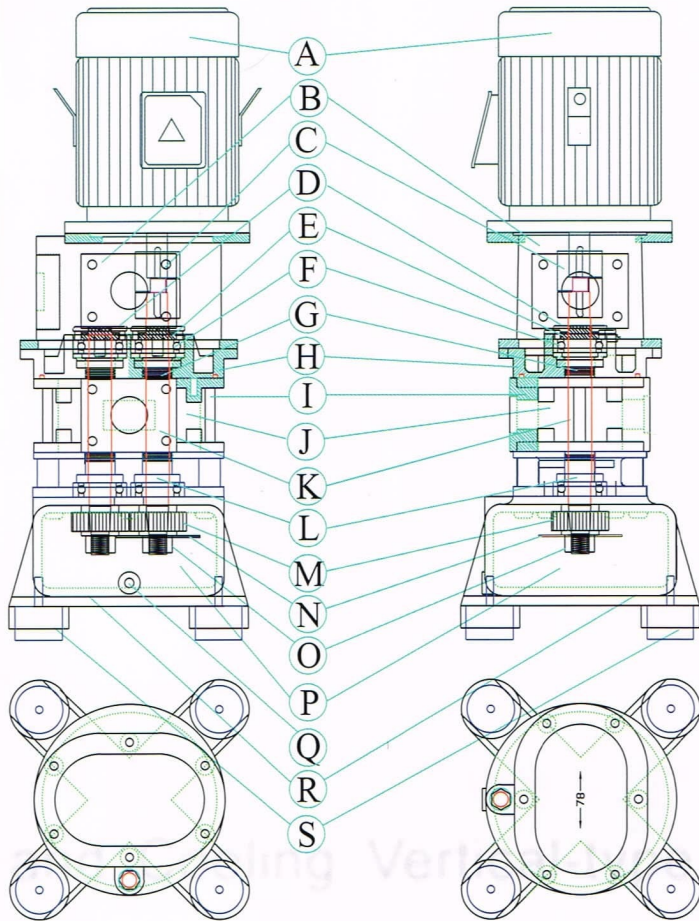
GTB 65A、80、100、125、150 外觀尺寸圖

Appearance Dimensional Drawing of GTB 65A、80、100、125 & 150



導流散熱立式魯氏鼓風機結構圖

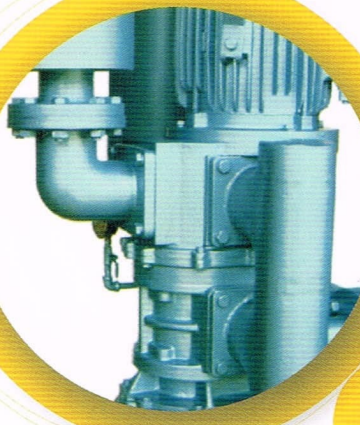
Material List of Re-circulated and Cooling Vertical-type Roots Blower



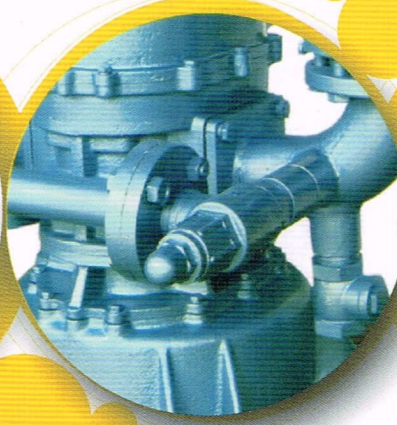
導流散熱立式魯氏鼓風機材質表

Structure Diagram of Re-circulated and Cooling Vertical-type Roots Blower

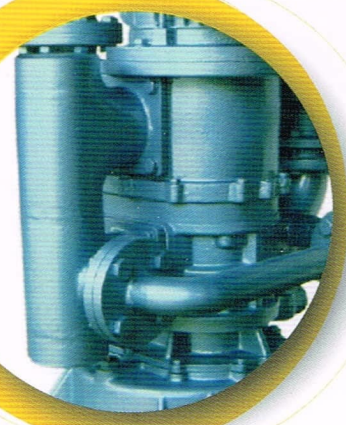
序 Sequence	名 稱 Name	材 質 Material	量 Quantity	指定材質 Specified Material
A	直立式馬達 Motor	FC200	1	
B	導流散熱連結座 Re-circulated base	FC250	1	
C	連結器 Coupling	FCD500	1	
D	軸承固定片 Bearing Washer	S45C	4	
E	碟型彈簧片 Disc Springs	N63CA	4	
F	軸承 Bearing	SUJ2	4	
G	軸心襯套 Shaft Link	S45C	2	
H	軸承座 Bearing Base	FC250	2	
I	本體 Main Casing	FC250	1	
J	葉片 Rotor	FCD500	2	
K	轉軸 Shaft	SCM440	2	
L	軸封 Oil Seal	NBR	2	
M	齒輪 Gear	SCM415	2	
N	甩油片 Front Oil splash	SS41	1	
O	固定螺絲帽 Nut	S45C	2	
P	油箱 Oil Case	FC250	1	
Q	油栓 Oil plug	SUS304	2	
R	支撐腳 Base	FC250	4	
S	防震墊 Vibration Isolator	SBR	4	



導流散熱室設計
Design of Re-circulated and Cooling Chamber



特殊風量調整裝置
Special Air Flow Adjustment Device



入口二段式消音
Two-stage Inlet Muffling

GTB型(導流散熱立式魯氏鼓風機)性能表60Hz

Performance Chart 60 Hz of GTB Model (Re-circulated and Cooling Vertical-type Roots Blower)

型 式 Model	口徑 Bore	馬達 Motor	0.1kgf/cm ²		0.2kgf/cm ²		0.3kgf/cm ²		0.4kgf/cm ²		0.5kgf/cm ²		0.6kgf/cm ²		噪音 noise	重量 weight
			1000mmAq		2000mmAq		3000mmAq		4000mmAq		5000mmAq		6000mmAq			
			CMM	Kw	CMM	Kw	CMM	Kw	CMM	Kw	CMM	Kw	CMM	Kw	db	Kg
GTB4037S	1.5B	0.5Hp	0.69	0.29	0.59	0.34	0.49	0.39							50	95
GTB4075S	1.5B	1Hp	0.69	0.32	0.59	0.39	0.49	0.47	0.38	0.55	0.30	0.63	0.22	0.71	51	99
GTB4075	1.5B	1Hp	1.05	0.45	0.9	0.53	0.75	0.6	0.65	0.7	0.55	0.75			54	99
GTB40A75S	1.5B	1Hp	1.4	0.65	1.2	0.70	1.0	0.75							56	140
GTB40A15	1.5B	2Hp	2.1	0.9	1.8	1.05	1.5	1.2	1.3	1.4	1.1	1.5			58	144
GTB5015	2B	2Hp	2.9	1.1	2.6	1.3	2.4	1.5							60	155
GTB5022	2B	3Hp	2.9	1.1	2.6	1.3	2.4	1.5	2.2	1.8	2.0	2.0			62	165
GTB5037	2B	5Hp	2.9	1.1	2.6	1.3	2.4	1.5	2.2	1.8	2.0	2.0	1.8	2.3	62	175
GTB6522	2.5B	3Hp	4.1	1.7	3.9	1.9	3.6	2.2							64	180
GTB6537	2.5B	5Hp	4.1	1.7	3.9	1.9	3.6	2.2	3.3	2.5	3.1	2.8	2.8	3.2	67	190
GTB65A22	2.5B	3Hp	5.4	2.0	5.1	2.2									64	220
GTB65A37	2.5B	5Hp	5.4	2.0	5.1	2.2	4.7	2.5	4.4	2.9	4.1	3.5			67	230
GTB65A55	2.5B	7.5Hp	5.4	2.0	5.1	2.2	4.7	2.5	4.4	2.9	4.1	3.5	3.8	4.0	69	245
GTB8037	3B	5Hp	6.7	2.9	6.4	3.2	6.0	3.7							66	250
GTB8055	3B	7.5Hp	6.7	2.9	6.4	3.2	6.0	3.7	5.7	4.3	5.3	5.0			69	263
GTB8075	3B	10Hp	6.7	2.9	6.4	3.2	6.0	3.7	5.7	4.3	5.3	5.0	5.0	5.8	72	269
GTB10055	4B	7.5Hp	9.4	4.0	9.0	4.6	8.6	5.2							73	295
GTB10075	4B	10Hp	9.4	4.0	9.0	4.6	8.6	5.2	8.2	6.1	7.8	7.1			75	300
GTB10011	4B	15Hp	9.4	4.0	9.0	4.6	8.6	5.2	8.2	6.1	7.8	7.1	7.4	8.2	77	345
GTB12575	5B	10Hp	11.5	5.0	11.0	6.0	10.5	7.0							78	330
GTB12511	5B	15Hp	11.5	5.0	11.0	6.0	10.5	7.0	10.1	8.1	9.6	9.4	9.1	10.6	80	370
GTB12515	5B	20Hp	11.5	5.0	11.0	6.0	10.5	7.0	10.1	8.1	9.6	9.4	9.1	10.6	80	390
GTB125A11	5B	15Hp	13.7	8.4	13.3	9.6	12.8	11.0							85	490
GTB125A15	5B	20Hp	13.7	8.4	13.3	9.6	12.8	11.0	12.4	12.6	12.0	14.6			88	505
GTB125A18	5B	25Hp	13.7	8.4	13.3	9.6	12.8	11.0	12.4	12.6	12.0	14.6	11.6	16.9	90	525
GTB15015	6B	20Hp	19.8	10.6	19.4	12.6	19	14.6							92	605
GTB15022	6B	30Hp	19.8	10.6	19.4	12.6	19	14.6	18.6	16.8	18.2	19.4	17.8	21.8	95	685

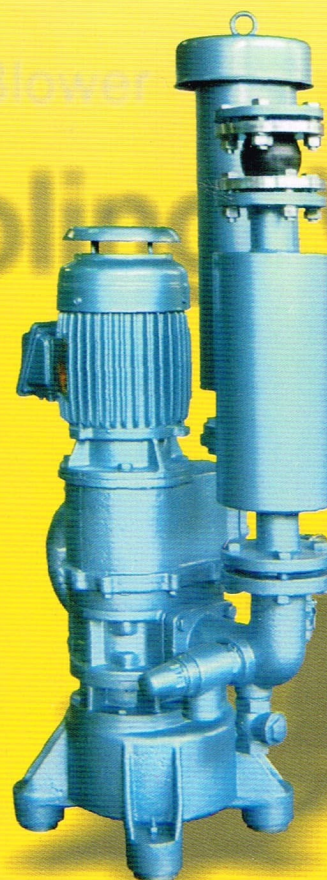
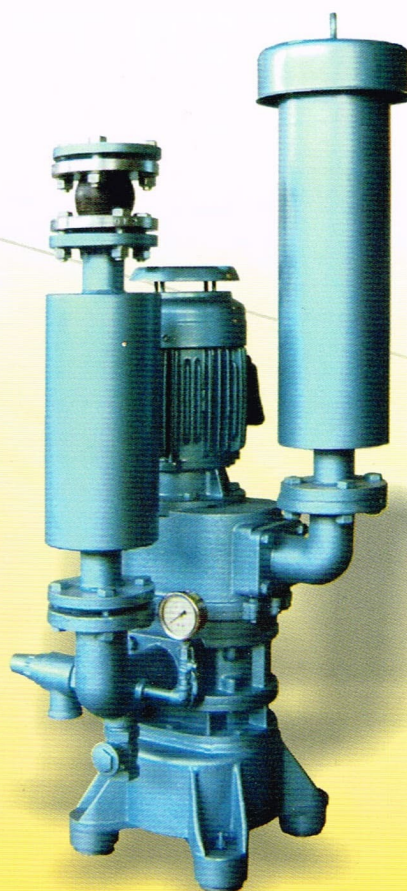
GTB型(導流散熱立式魯氏鼓風機)性能表50Hz

Performance Chart 60 Hz of GTB Model (Re-circulated and Cooling Vertical-type Roots Blower)

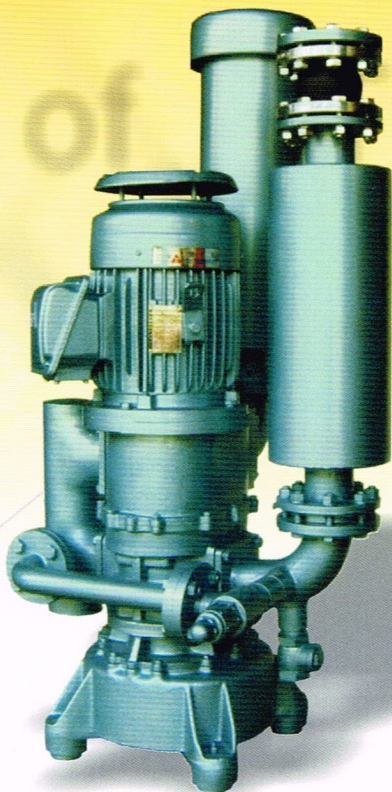
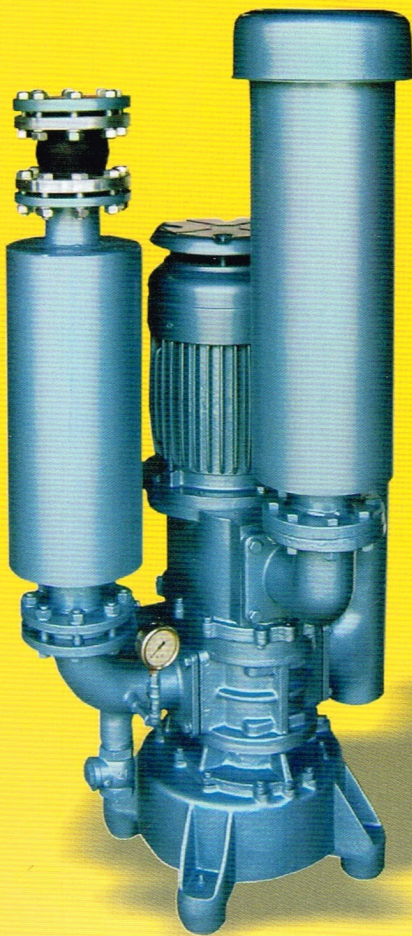
型 式 Model	口徑 Bore	馬達 Motor	0.1kgf/cm ²		0.2kgf/cm ²		0.3kgf/cm ²		0.4kgf/cm ²		0.5kgf/cm ²		0.6kgf/cm ²		噪音 noise	重量 weight
			1000mmAq		2000mmAq		3000mmAq		4000mmAq		5000mmAq		6000mmAq			
			CMM	Kw	CMM	Kw	CMM	Kw	CMM	Kw	CMM	Kw	CMM	Kw	CMM	Kw
GTB4037S	1.5B	0.5Hp	0.57	0.28	0.49	0.32	0.40	0.37							48	95
GTB4075S	1.5B	1Hp	0.57	0.30	0.49	0.35	0.40	0.41	0.32	0.48	0.24	0.57	0.16	0.66	50	99
GTB4075	1.5B	1Hp	0.87	0.44	0.75	0.51	0.62	0.58	0.54	0.68	0.45	0.74			50	99
GTB40A75S	1.5B	1Hp	1.1	0.55	0.9	0.65	0.7	0.75							54	140
GTB40A15	1.5B	2Hp	1.65	0.83	1.4	0.97	1.2	1.2	1.0	1.35	0.8	1.45			56	144
GTB5015	2B	2Hp	2.4	1.2	2.2	1.3	2.0	1.4							58	155
GTB5022	2B	3Hp	2.4	1.2	2.2	1.3	2.0	1.4	1.8	1.6	1.6	1.8	1.5	2.0	60	165
GTB6522	2.5B	3Hp	3.4	1.5	3.2	1.7	3.0	1.9	2.8	2.1					62	180
GTB6537	2.5B	5Hp	3.4	1.5	3.2	1.7	3.0	1.9	2.8	2.1	2.6	2.4	2.3	2.7	64	190
GTB65A22	2.5B	3Hp	4.4	1.7	4.2	1.9	3.9	2.1							62	220
GTB65A37	2.5B	5Hp	4.4	1.7	4.2	1.9	3.9	2.1	3.6	2.5	3.4	2.9	3.1	3.4	65	230
GTB8037	3B	5Hp	5.6	2.4	5.3	2.7	5.0	3.1							64	250
GTB8055	3B	7.5Hp	5.6	2.4	5.3	2.7	5.0	3.1	4.7	3.7	4.4	4.2	4.1	4.8	67	263
GTB10055	4B	7.5Hp	7.8	3.4	7.5	3.9	7.1	4.4	6.8	5.1					71	295
GTB10075	4B	10Hp	7.8	3.4	7.5	3.9	7.1	4.4	6.8	5.1	6.5	6.0	6.1	6.8	73	300
GTB12575	5B	10Hp	9.5	4.2	9.1	5.0	8.7	5.9	8.3	6.8					78	330
GTB12511	5B	15Hp	9.5	4.2	9.1	5.0	8.7	5.9	8.3	6.8	7.9	7.9	7.5	8.9	80	370
GTB125A11	5B	15Hp	11.4	7.2	11.1	8.3	10.7	9.4	10.4	10.5					85	490
GTB125A15	5B	20Hp	11.4	7.2	11.1	8.3	10.7	9.4	10.4	10.5	10.1	11.7	9.7	12.9	88	505
GTB15015	6B	20Hp	17.3	9.0	16.9	10.6	16.5	12.2	16.2	13.9					92	605
GTB15022	6B	30Hp	17.3	9.0	16.9	10.6	16.5	12.2	16.2	13.9	15.9	15.7	15.5	17.5	95	685

Features of Re-circulated and Cooling Vertical-type Roots Blower

- ◆ **Low Noise:** The inlet adopts The design of two-stage muffling, added by the buffering acoustic enclosures. The erect outlet muffler is additionally installed on the outlet, so that the recurrent noise from air compression can be effectively reduced.
- ◆ **High Efficiency:** The lobe wheel uses the two-lobe round and symmetrical design, which, undergoing the precise processing by the planing machine exclusively for CNC, can minimize the space between the lobe wheels so as to enhance the efficiency of the blower.
- ◆ **Small Vibration & Long Durability:** The blower is of the erect axle vertical design. Its lobe wheels are calibrated by extremely precise dynamic balancing with the fixed bearing design of the special disk-shape spring lamination, which leads to less than 15 μ m engine vibration. (When the blower operates with full load, it can hold 50 \$ coin so standing that it would not fall down.)
- ◆ **Save Space:** The entire structure of re-circulated cooling vertical-type Roots Blower is directly connected by the vertical motor to the blower with the adoption of the vertical design on the muffler of both the outlet and inlet, so that the space where the blower occupies can be saved.
- ◆ **Reverse Rotation Protection Device:** The blower is especially installed with one more reverse rotation protection device which can protect the blower from being damaged even when its motor happens to be rotated in reverse direction.
- ◆ **Self Adjustment of Air Flow :** By the specially tailored air flow adjuster, the operator can adjust the volume of air flow by himself at any time whenever the need for adjustment of air flow comes up. (optional accessory)
- ◆ **Mandatory Cooling by using the cool air to re-circulate and cool the bearing:** Make use of the cool air in the inlet of the blower and induct it around the bearing for cooling. therefore the bearing will not be over-heated and the lubrication grease will not change its quality, so the grease replacement time can be lengthened.
- ◆ **Adoption of Full Close Outdoor Motor:** Even if the blower is placed outdoors, you don't worry that it will suffer from weather. (for blower to be installed in outdoor)
- ◆ **Permanent Exemption of Belt Replacement:** The blower and the motor adopt the axle connector for direct driving, which can save the expenses of the belt replacement and prevent from the environment pollution caused by the belt powder.
- ◆ **Exemption from Fixation:** The special anti-vibration device can stabilize the machine's center of gravity and avoid its body from being shaky. No fixed



導流散熱立式 魯氏鼓風機之特色



- **低噪音**：入口採用二段式消音及增加緩衝隔音室設計，出口並增加豎立出口消音器，可有效降低空氣壓縮之迴流噪音。
- **高效率**：葉輪採用高效率之二葉圓滑對稱設計，並經CNC專用鉋床精密加工，使葉輪間之縫隙極小，更加提高鼓風機之效率。
- **震動小壽命長**：鼓風機採豎軸直立式設計，葉輪經極精密之動平衡校正，及特殊之碟型彈簧片固定軸承設計，使鼓風機之震動值小於 $15\mu\text{m}$ 。（當鼓風機全載運轉時，可將五十元硬幣豎立而不倒）
- **節省空間**：導流散熱立式魯氏鼓風機之整體構造，為直立式馬達直接聯結鼓風機，出入口消音器皆採直立設計，可節省鼓風機之佔地空間。
- **逆轉保護裝置**：鼓風機特別加裝逆轉保護裝置，在鼓風機不慎馬達逆轉時，亦不會造成鼓風機之損壞。
- **可自行調整風量大小**：當有調整風量大小之需要時，可特別訂製風量調整裝置，風量之大小可隨時自行調整。（選購品）
- **軸承以冷空氣導流散熱強制冷卻**：利用鼓風機之入口冷空氣，將其導入軸承四周可迅速冷卻軸承，因此軸承不過熱，潤滑油脂不變質，可延長更換油脂之時間。
- **採用全密閉屋外型馬達**：即使將鼓風機放置室外亦不怕風吹日曬雨淋。（戶外使用）
- **永久免更換皮帶**：鼓風機與馬達採用連軸器直接傳動，可節省更換皮帶之費用，並可避免皮帶粉屑對環境之污染。
- **免固定**：特殊防震腳設計，重心穩機身不晃動，免固定配管及施工容易。