



*5GHz 2x2 MIMO Outdoor 802.11ac Wireless
Base Station / Router*

WIS-S516AC

Version 1.0

Product Overview

WIS-S516AC is robust outdoor wireless base station featuring 802.11ac technology for high end wireless coverage and point to multi-point connections. When it works with wisnetworks 11ac CPE, it could reach at least 20km distance of network coverage, which makes it extraordinarily ideal for ISP and surveillance industry and so on.

Features

High performance

- 16dBi high antenna gain
- 27dBm high power
- 867Mbps speed
- Gigabit LAN port

Robust Outdoor Ability

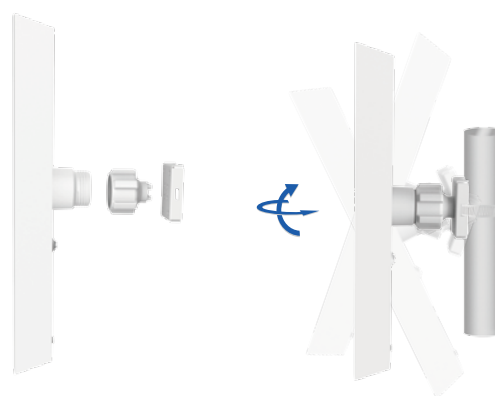
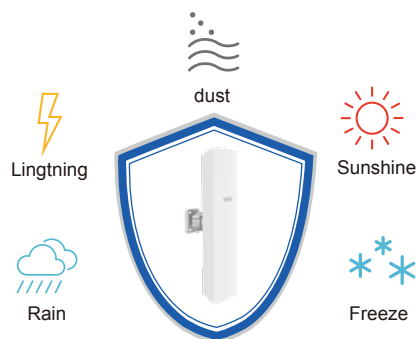
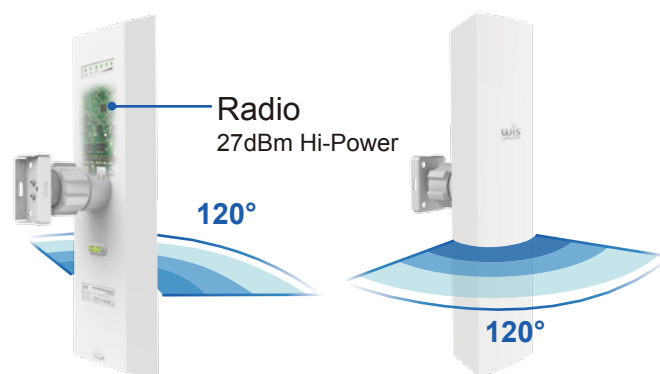
- Up to 8kV lightning protection
- Up to 24kV ESD protection
- IP 65 waterproof housing
- -20°C -70°C tolerance

Flexibility and Simplicity

- Ball joint for all directional installation
- User-friendly design as no other tools required during installation
- Pole mounting and wall mounting

Significant Expense Reduction

- Ultra-gain in a smaller size antenna due to greatly improved antenna hardware design
- Compactly designed box reduces the transportation and logistics expense

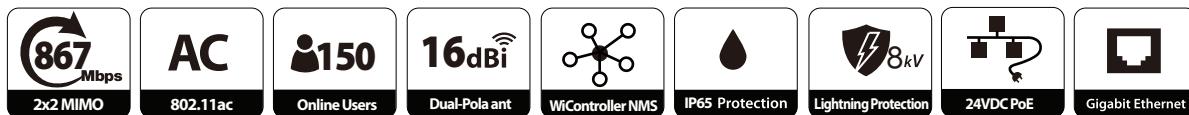


DIMENSIONS: 153*118*425MM

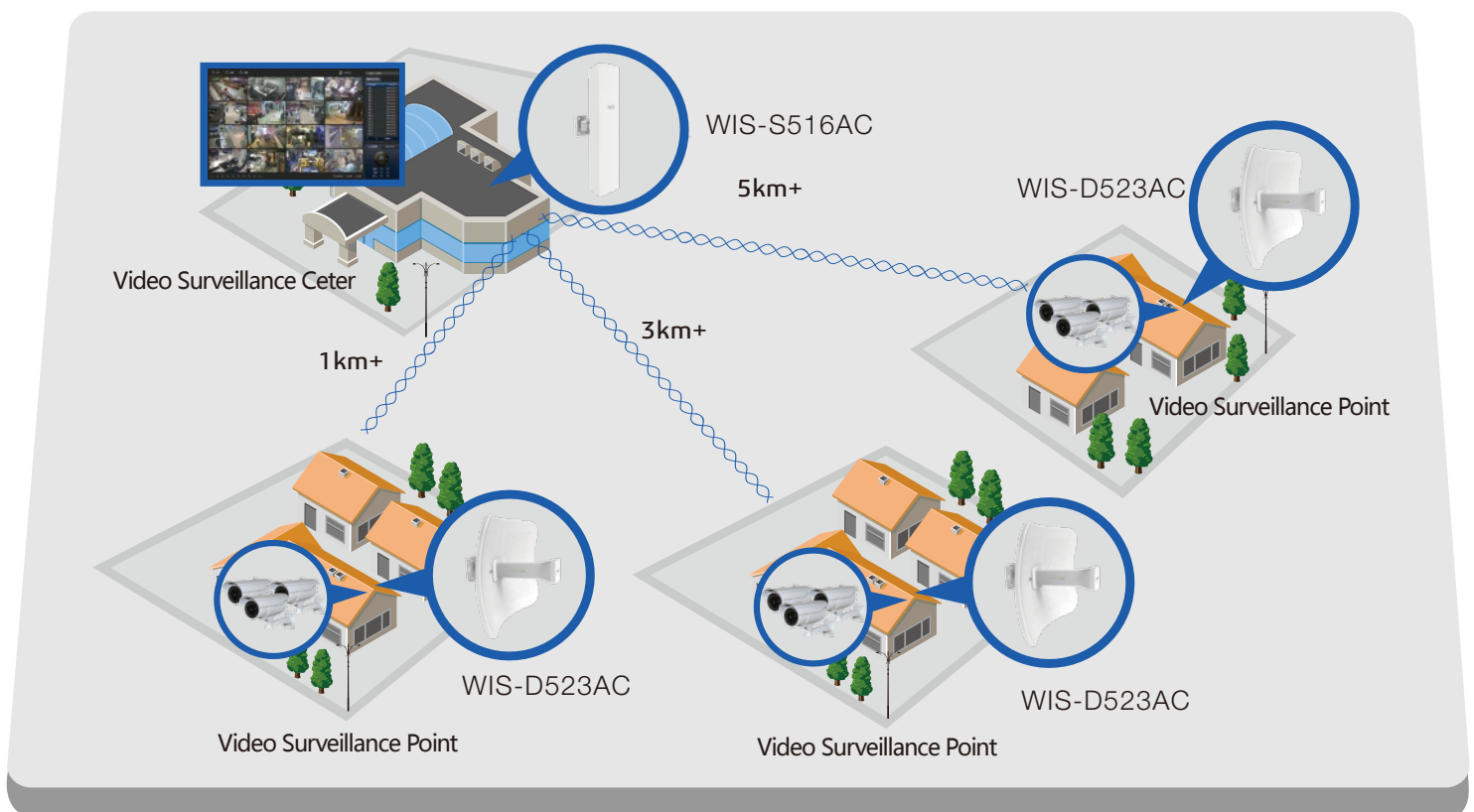


Features and Benefits

- Compliant with 802.11ac/n/a, speed up to 867Mbps
- Gigabit LAN port helps get maximum wireless performance
- High output transmission power and receive sensitivity optimized
- 16dBi high gain dual-polarized sector antenna
- All directional and simple installation without other mounting kits or tools
- 24V Passive PoE with remote reset for flexible deployment
- IP65 outdoor weather-proof housing and up to 24kV ESD protection



Network Diagram



Specification

> Radio

- 802.11ac/n/a radio (Atheros 720MHz)
- Speed up to 867 Mbps
- Frequency Range: 5.1-5.8GHz
- Tx Power 27dBm±2
- Rx Sensitivity 867Mbps: -67dBm@10% PER
300M: -74dBm@10% PER
54M: -78dBm@10% PER
1M: -98dBm@10% PER

> Antenna

WIS-S516AC : 16dBi 120 degree dual-polarized sector antenna

>Physical Parameters

- Dimension: 395*100*90mm
- Weight: 0.77kg
- Enclosure: Weatherproof ASA
- ESD Protection: 16kV
- Lightning Protection: 8kV
- Working Temp: -20 ~ 70°C
- Storage Temp: -40 ~85°C
- Working Humidity: 10%~95% non-condensing

> Power

- 24VDC, 0.75A
- Power Consumption: 10W

>Security

- Integrated Firewall
- WPA/WPA2;WPA-PSK/WPA2-PSK (AES/TKIP) Encryption; 64/128-bit WEP;

> Interfaces

- 1x 10/100/1000 Base-T Ethernet (Gigabit LAN with Passive PoE)
- Reset

> LED

- Power:On/Off
- LAN:On/Off/Flashing
- WLAN:On/Off/Flashing
- RSSI Signal: 1,2,3

>Warranty

- 2 Year

>Certification

- CE, FCC,RoHS

>Package content

- WIS-S516AC
- Quick Setup Guide
- Power Adapter with Passive PoE
- Mounting kits

Wisnetworks Technologies Co., Ltd.

Sales e-mail: info@wisnetworks.com Web: www.wisnetworks.com

Community: community.wisnetworks.com

Address: No.77, FuTe West 3 Road, China (Shanghai) Pilot Free Trade Zone