

MicroEngine®

Integrated Security Systems

M-Series IP Controllers

Better Configurability & Security

Encrypted IP . High Capacity . Sector Reading



M2300i

2 Door IP Access Controller



Mifare Sector Reading

Direct IP LAN - Push Based

Global Antipassback

High Capacity

Supports Up to 16 Digits

M1300i

1 Door IP Access Controller



www.microengine.net



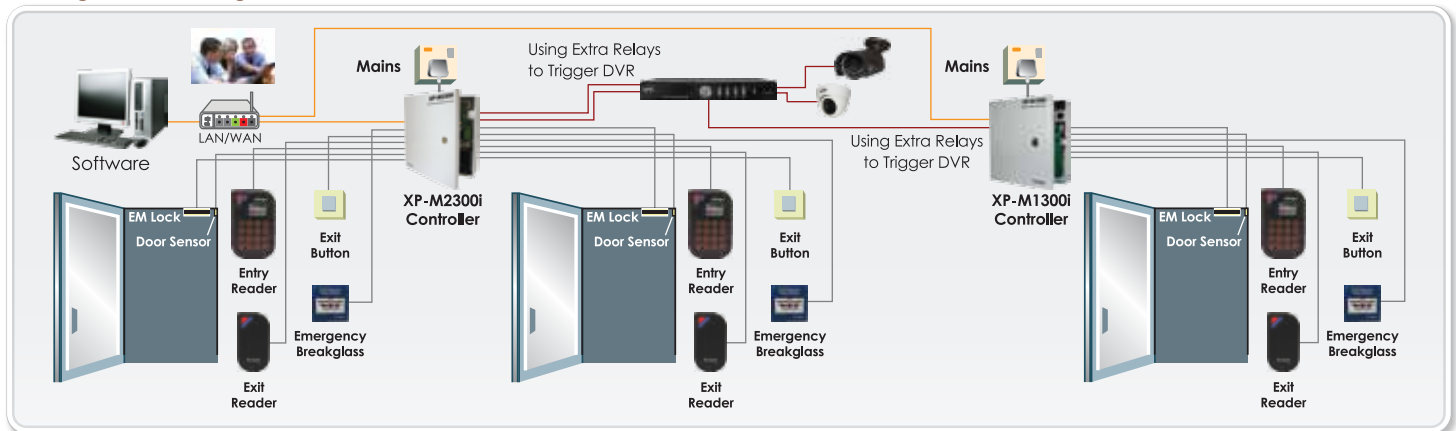
REG No. 749921389

M-Series IP Controllers



No.	Feature	XP-M1300i	XP-M2300i
1	No. of Doors	1 Door	2 Doors
2	No. of Readers	Max 2 Readers (Plato Readers) - 1 Entry / 1 Exit	Max 4 Readers (Plato Readers) - 2 Entries / 2 Exits
3	Wiegand / ABA Reader	Yes - Max 2	
4	Connection to PC	IP LAN (10/100 Base-T) / RS485	
5	Connection to Reader	RS485 - Plato Reader Series / Wiegand/ABA	
6	Card Holders	30,000 (16 digits)	
7	Transactions	50,000	
8	Time Setting	255 Time set & 255 Time Zone (No Access Level Limits)	
9	Holiday	30 (2 Sets)	
10	Inputs	5 Supervised/Digital (Switchable) - 1 Door Sensor + 1 Exit Button, 1 Dedicated Fire Alarm Input, 2 Configurable as Reader Tamper, Emergency Breakglass Monitor or General Purpose	10 Supervised/Digital (Switchable) - 2 Door Sensors + 2 Exit Buttons, 1 Dedicated Fire Alarm Input, 5 Configurable as Reader Tamper, Emergency Breakglass Monitor or General Purpose
11	Door Relay Output(s)	1	2
12	Extra Relay Output(s)	Yes (1) - Configurable	Yes (2) - Configurable
13	Encrypted IP	Yes - AES 128	
14	Anti-Passback	Yes - Global Antipassback (Up to 16 Controllers)	
15	Real Time Clock	Yes - with On Board Battery	
16	IP Messaging	Encrypted with AES128 with dynamic key and supports Push Based	
17	Power Fail Monitor	Yes - with Power Level Monitoring	
18	Firmware Upgrade	Download from Software	
19	Diagnostic	Yes - Using Built-in Web Browser	
20	Mifare Sector Reading	Yes. Using Plato Reader.	
21	Onboard LED/Buzzer	Yes. LED: Input, Output, Run, Diagnostic, Error	
22	Use with other MicroEngine controllers	Yes	
23	Processor	Microchip PIC32 - 32-bit RISC MCU at 80 MHz	
24	Memory	Program (FLASH: 512KB); DATA (EEPROM: 256KB, FLASH: 4MB)	
25	PCB Board Dimension	160mm (L) x 80mm (W)	130mm (L) x 170mm (W)
26	Casing Dimension	235mm (H) x 227mm (W) x 75mm (D)	295mm (H) x 285mm (W) x 80mm (D)
27	Power Consumption	Typically 400 mA (Controller Board Only)	Typically 450 mA (Controller Board Only)

Configuration Diagram



For enquiries, please contact:

Specifications subject to change without prior notice.

Plato Readers

Slim Card Reader	
Model	Description
Plato-P80S	Proximity Reader
Plato-C80S	Mifare / CEPAS Reader*

Slim Card Reader with Touch Sense Keypad & Colour Graphic LCD	
Model	Description
Plato-P80KLS	Proximity Reader
Plato-C80KLS	Mifare / CEPAS Reader*

*Plato Mifare Reader supports Sector Reading

Softwares

- xPortal3000 Simple Time Attendance
- xPortalNet Client/Server with SQL Server
- xPortalWeb Web based

