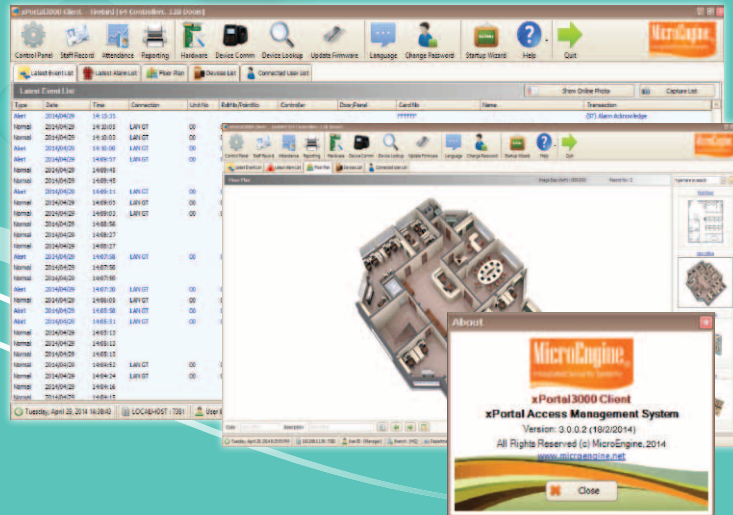


SR1000

Door Access Reader with Controller

Simple • Reliable • Efficient



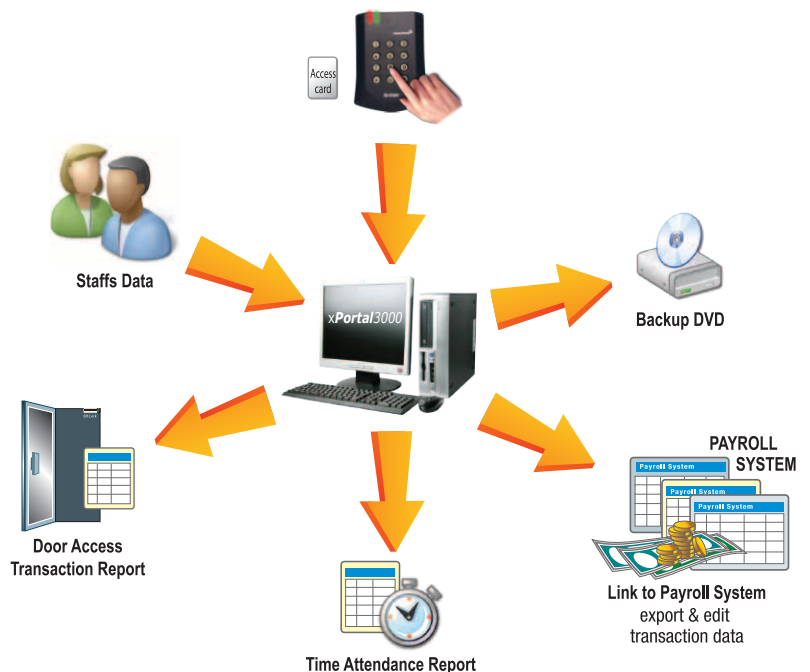
▶ PC CONTROL

▶ BUILT IN CONTROLLER

▶ BUILT IN CLOCK & MEMORY

▶ PROXIMITY READER WITH KEYPAD

▶ DURABLE EPOXY COATED KEYPAD



xPortal3000 Features



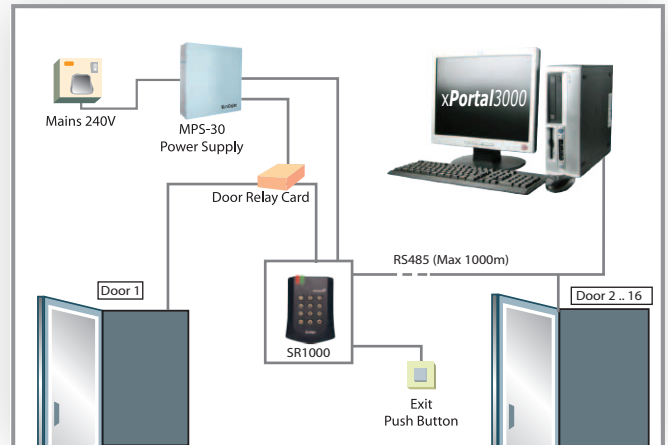
No.	Item	Free	xPortal3000/S	xPortal3000
1	Operating System	Windows XP Pro, Vista, Win 7, Windows Server 2003/2008 /Compatible (Microsoft .Net Framework v2.0 Required)		
2	Max No. of Controllers / Doors	8 / 16	32 / 64	64 / 128
3	Controller Supported	MicroChip's XP-M1000, XP-M1000X, XP-GT3200L, XP-GT1200LXP-C2000, XP-CPRO Multi-Door Controllers, XP-M1000i & XP-M2000i Encrypted IP Controller		
4	Card Holder	1,000	10,000	10,000
5	Transaction Records	Limited by Disk Space		
6	Server as Windows Service	Yes		
7	Time Set & Time Zone	255		
8	Holiday Dates	30		
9	Access Levels	255		
10	Anti-Passback	Yes		
11	Automatic Transaction Retrieval	Yes		
12	Password Controlled Software User	Yes		
13	User Defined PIN Selection	Yes		
14	Daily Attendance Reporting	Yes - Simple Single Day Daily Mode Late-in, Absent, Total Work Time, OT, Flexi Hour		
15	Monthly Attendance Reporting	Yes - Summary of Attendance Status		
16	Who's Still In Report	Yes - Multiple Door Selection		
17	Add Controller Wizard	Yes		
18	Dynamic Floor Plan	Yes		
19	Online Events Viewing	Yes		
20	Online Help	Yes		
21	Database	FireBird		
22	Communication Link to PC	Serial RS485 or IP		
23	Multi-Workstation	No	No	Yes - Max 3
24	Multi-Language by System User	No	Yes	Yes
25	System User	Use Default only	Can Add New System User	Can Add New System User
26	System User Menu Access Setting	No	Yes	Yes
27	Scheduled Backup	No	No	Yes
28	Scheduled Attendance Rebuild	No	No	Yes
29	Lift Access	No	Yes	Yes
30	Floor Plan Thumbnail	No	No	Yes
31	Advanced Floor Plan Icon Setting	No	No	Yes
32	Multi-Database	No	No	Yes

SR1000 Reader



No.	Item	Feature
1	No. of Door	1 Door
2	No. of Card User	1000
3	Transactions	10,000
4	Built in Controller	Yes
5	Built in Card Reader	Yes (Proximity)
6	Durable Epoxy Coated Keypad	Yes
7	Connect to PC	RS 485 (Up to 1000m) -Requires USB to RS 485 converter
8	Operation Mode	Card only, PIN only, Card + PIN
9	Auto Pin	Yes (10 set)
10	Buil in Real Time Clock with Backup Battery	Yes
11	LED Indicator	Yes
12	On Board Buzzer	Yes
13	Support Exit Reader	Yes
14	Support Programming through Keypad	Yes
15	Configurable Lock Release Time	Yes (0 - 99 sec)
16	Configurable Door Open Time	Yes (0 - 99 sec)
17	Can be Linked to PC for Software Control	Yes (xPortal3000)
18	Memory	1. Program (FLASH - 64KB) 2. Memory (EEPROM - 1024B)
19	Power Consumption	12 VDC - 200mA (Typical)
20	Dimension	125mm X 94mm X 30mm

Configuration Diagram



Ordering Information

No.	Item	Feature
1	XP-GT3200L	Fingerprint Proximity Reader with LCD & Keypad Built-in Controller Function, 3,200 Users, 20,000 Transactions, TimeKeeping C/W MAS-RBT Door Interface Unit
2	XP-GT3200ABL	Fingerprint ISO14443 A/B Serial No. Reader with LCD & Keypad Built-in Controller Function, 3,200 Users, 20,000 Transactions, TimeKeeping C/W MAS-RBT Door Interface Unit
3	XP-M1000X	Proximity Reader with LCD & Keypad Built-in Controller Function, 1,000 Card Users, 10,000 Transactions, Time Keeping C/W MAS-RBU Door Interface Unit
4	XP-GTR1200L	Proximity Reader with LCD & Touch Sense Keypad + LAN 1,200 Card Users, 10,000 Transactions
5	XP-M1000ABX	ISO14443 A/B Serial No. Reader with LCD & Keypad Built-in Controller Function, 1,000 Users, 20,000 Transactions, TimeKeeping C/W MAS-RBU Door Interface Unit
6	XP-RDRPX	Proximity Reader
7	XP-RDMFX	ISO14443 A/B Serial No. Reader with ABS Casing
8	MCI-XPC3000/S	Standalone Software Licence for Controlling Up to 64 Doors of XP-M1000X, XP-GT3200L, XP-GTR1200L, XP-CPRO Controller
9	MCI-XPC3000	xPortal3000 Client / Server Software Licence Max 3 Client Max 128 Doors Max 64 Controllers per Software
10	XPC3000-CLIENT	xPortal3000 Client Software Workstation Licence
11	MPS-320	3A Power Supply Unit with Low Power Cut-off
12	MPC-100	Proximity Card
13	MPC-S1K	Mifare Standard 1KBit ISO Card
14	XP-M1000i	Encrypted IP 1 Door Access Controller
15	XP-M2000i	Encrypted IP 2 Door Access Controller

Computer Requirements

No.	System	Requirement
1	CPU (Recommended)	Intel Core i3-3220, 3.3 GHz or Higher
2	RAM (Minimum)	2 GB (3 GB Recommended)
3	OS	Microsoft Win7/Win8 Pro, 2003/2008 Server (Home & Starter Editions Not Supported)
4	Microsoft.Net Framework	Yes (Version 3.5)
5	Serial Port	Yes
6	USB Port	Optional - Required for USB Desktop Reader
7	Display (1024 x 768 x 16 bit colours)	Yes
8	Mouse / Keyboard	Yes
9	Hard Disk (Free Space)	50 GB

xPortal3000 is a highly configurable software. You are advised to contact our authorised representatives to configure the system that meet your requirements.

For enquiries, please contact:

Specifications subject to change without prior notice.

