



Sissons

PROTECTIVE COATING FOR INDUSTRIAL APPLICATION

- **Superior Industrial Protection**
- **Resistant to Rust & Corrosion**



MICACEOUS IRON OXIDE



Silver Grey



**INDUSTRIAL
MATT
BLACK**



Medium Grey



**BITUMEN
SOLUTION
BLACK**



Dark Grey



**WATER
TANK BLACK**



**HEAT-RESISTING
ALUMINIUM
PAINT TYPE A**



**EPOXY RED
OXIDE
PRIMER**

**SELF ETCH
PRIMER**

METAL PROTECTIVE
PRIMER

LIQUID FLOOR COVERING



Green



Tile Red

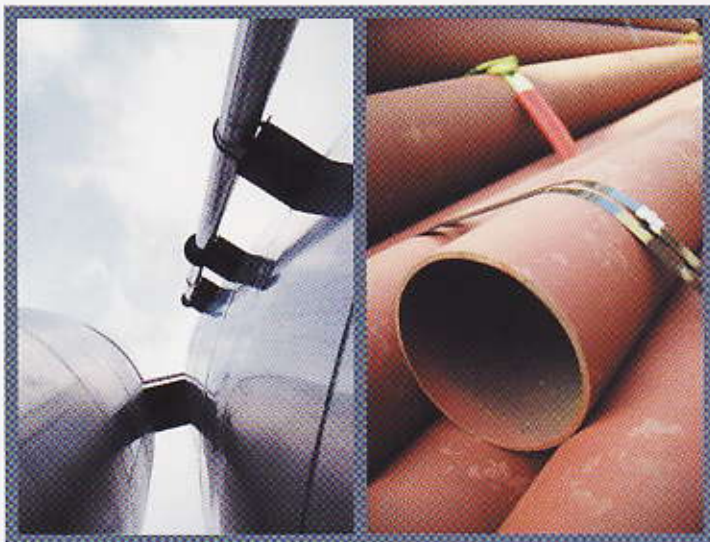


**EXTERIOR
ALUMINIUM
PAINT**

**RED OXIDE
PRIMER**



Also available:
Heat Resisting
Aluminium Paint 200°C



**PROTECTIVE COATING
FOR INDUSTRIAL APPLICATION**



Waja Blue



Blue



Green



Red

ANTI-CORROSIVE ROOF PAINT

ASBESTOCOTE



Blue



Green



Brick Red



Orange

ROAD LINE PAINT

Non Reflective White



Non Reflective Yellow



Non Reflective Black

Also available:
Reflective White and Yellow

ANCILLARY PRODUCTS

EPOXY FINISH



Tile Red



Evergreen



Green



Blue



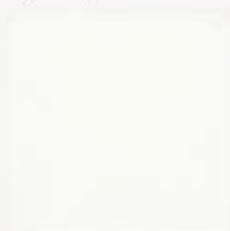
Light Grey



Executive Grey



Ivory



White

ZINC PHOSPHATE PRIMER



Grey Green



Brown



Yellow

Sissons offers a comprehensive range of protective surface coatings, formulated exclusively for the extreme demands of an industrial environment. These heavy duty paints can be applied to a wide range of light alloys or galvanised surfaces such as metal surfaces of storage tanks, pipes, piles, vessels and metal bridges. They provide superior protection against rust and corrosive effects of the environment.



Sissons offers a comprehensive range of protective surface coatings, formulated exclusively for the extreme demands of an industrial environment. These heavy duty paints can be applied to a wide range of light alloys or galvanised surfaces such as metal surfaces of storage tanks, pipes, piles, vessels and metal bridges. They provide superior protection against rust and corrosive effects of the environment.

Zinc Phosphate Primer:

A high quality general purpose primer based on zinc-borate phosphate and inert pigments bound together by a medium oil synthetic resin. Recommended for ferrous based metals. Available in Grey Green, Brown and Yellow.

Self Etch Primer:

A high quality primer possessing an extremely high degree of adhesion and protection against corrosion. Ideal for use on galvanized surfaces and will prevent flaking which is a common fault when conventional primers are used on zinc or other non-ferrous metals.

Epoxy Red Oxide Primer:

Two pack epoxy/polyamide primer for use for the prevention of corrosion on blasted steel surfaces to withstand chemical attack and heavy mechanical wear. Mixing ratio is 4:1 by volume of base and activator.

Epoxy Finish:

Hard wearing and chemical resistant two pack finish specially designed for the protection of concrete and steel structures on ships and offshore, factory floors and chemical plants. Mixing ratio is 4:1 by volume of base and activator. Available in White, Tile Red, Blue, Green, Light Grey, Executive Grey, Evergreen and Ivory.

Red Oxide Primer:

A general purpose primer for use on ferrous metals and fabricated metal products.

Micaceous Iron Oxide:

A highly durable finish based on micaceous iron oxide, an extremely hard lamellar pigment possessing a high degree of water impermeability and particularly suitable for use under tropical conditions. Available in Dark Grey, Medium Grey and Silver Grey.

Q.D. Red Lead Primer:

A quick drying top quality primer for general purpose use on iron and steel surfaces where maximum protection against corrosion is required. Available in Brown and Orange.

Bitumen Solution Black:

A coating for metal surfaces. Suitable substitute for enamel when protection rather than decoration is a prime consideration.

Exterior Aluminium Paint:

A heat resistant coating for use on wood and metal structures. Its brilliant luster reduces excessive temperature build up by reflecting solar heat which makes it an ideal finish for storage tanks, ducting and pipes.

Industrial Matt Black:

Quick drying matt finish recommended for use as machinery enamel and on domestic and industrial equipments.

Water Tank Black:

A non-toxic protective coating for water tanks complying with BS3416 Type II.

Heat Resisting Aluminium Paint - Type A:

A silicone based aluminium coating that has the highest possible heat resistant qualities withstanding temperatures of up to 538°C (1000°F) with no discoloration at all at 316°C (600°F).

Ancillary Products**Anti-Corrosive Roof Paint:**

An appealing gloss finish that offers maximum protection to metal roofs and is highly resistant to attack by chemically polluted atmosphere. Available in Red, Blue, Waja Blue and Green.

Asbestocote:

A protective and decorative coating for concrete surfaces, asbestos, cement cladding or roofing where conditions demand better performance than that offered by conventional emulsion paints. Dries to produce an exceedingly tough, lightfast and durable film, yet remains sufficiently flexible to withstand climatic and temperature variations. Available in Brick Red, Blue, Green and Orange.

Liquid Floor Covering:

Specially formulated for use on timber and fully cured cement floors to enhance their appearance. When floor is in direct contact with the ground, adequate protection such as water proofing against ground moisture must be employed before application. Available in Tile Red and Green.

Road Line Paint:

A Malaysian Standard Mark approved paint which is specially designed for marking of roads and car parks. Available in White, Yellow (reflective and non-reflective) and Black.

