

TENCON

OPEN CLOSET SYSTEM



TENCON



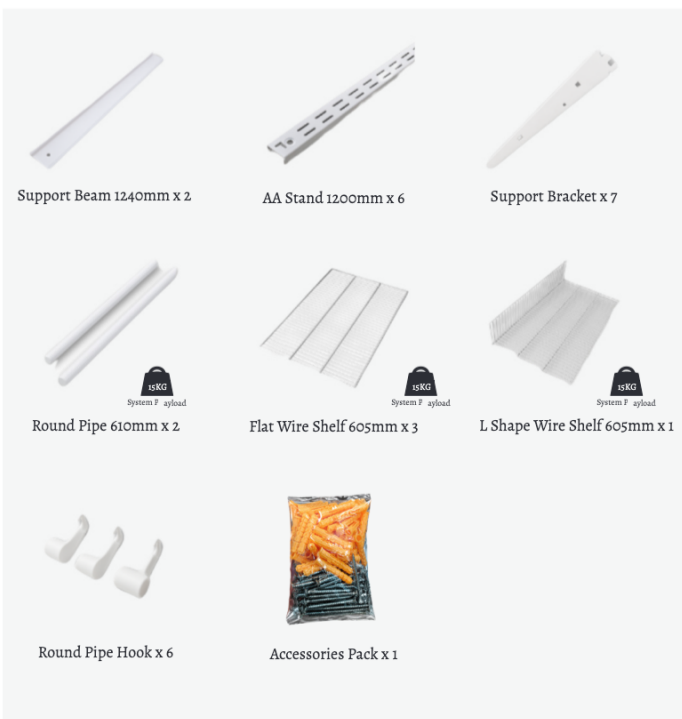
Features:

- **Easy Installation:** Designed for a quick and simple setup, saving you time and effort.
- **High Load-Bearing:** Sturdy and durable construction, providing reliable support for your everyday wardrobe.
- **Flexible Combination:** Modular design that easily adapts to different height requirements.
- **Customizable Sizing:** Support beams and stands can be cut to size, ensuring a perfect fit for your specific needs.

OPEN CLOSET SYSTEM SET 1- SIZE W1200 X H2000MM

Product Code	Material	Finish	Applicable Height (mm)	Applicable Width (mm)	Applicable Depth (mm)
OC-1200-A-WH	Low carbon steel	White	2000-2800	1200	600
OC-1200-A-BLK	Low carbon steel	Black	2000-2800	1200	600

ACCESSORIES



INSTALLATION:

STEP 1:



Measure and screw support beam to the wall.

STEP 2:



Hook AA stand at the support beam track and fix to the wall.

STEP 3:



Install the accessories parts.

* Dimensional data not binding. We reserve the right to alter specifications without notice.



TENCON



Features:

- **Easy Installation:** Designed for a quick and simple setup, saving you time and effort.
- **High Load-Bearing:** Sturdy and durable construction, providing reliable support for your everyday wardrobe.
- **Flexible Combination:** Modular design that easily adapts to different height requirements.
- **Customizable Sizing:** Support beams and stands can be cut to size, ensuring a perfect fit for your specific needs.

OPEN CLOSET SYSTEM SET 2 - SIZE W1200 X H2000MM

Product Code	Material	Finish	Applicable Height (mm)	Applicable Width (mm)	Applicable Depth (mm)
OC-1200-B-WH	Low carbon steel	White	2000-2800	1200	600
OC-1200-B-BLK	Low carbon steel	Black	2000-2800	1200	600

ACCESSORIES



INSTALLATION:



STEP 1:
Measure and screw support beam to the wall.



STEP 2:
Hook AA stand at the support beam track and fix to the wall.



STEP 3:
Install the accessories parts.

* Dimensional data not binding. We reserve the right to alter specifications without notice.



TENCON



Features:

- **Easy Installation:** Designed for a quick and simple setup, saving you time and effort.
- **High Load-Bearing:** Sturdy and durable construction, providing reliable support for your everyday wardrobe.
- **Flexible Combination:** Modular design that easily adapts to different height requirements.
- **Customizable Sizing:** Support beams and stands can be cut to size, ensuring a perfect fit for your specific needs.

OPEN CLOSET SYSTEM SET 1 - SIZE W1500 X H2000MM

Product Code	Material	Finish	Applicable Height (mm)	Applicable Width (mm)	Applicable Depth (mm)
OC-1500-A-WH	Low carbon steel	White	2000-2800	1500	600
OC-1500-A-BLK	Low carbon steel	Black	2000-2800	1500	600

ACCESSORIES



INSTALLATION:

STEP 1:



Measure and screw support beam to the wall.

STEP 2:



Hook AA stand at the support beam track and fix to the wall.

STEP 3:



Install the accessories parts.

* Dimensional data not binding. We reserve the right to alter specifications without notice.



TENCON



Features:

- **Easy Installation:** Designed for a quick and simple setup, saving you time and effort.
- **High Load-Bearing:** Sturdy and durable construction, providing reliable support for your everyday wardrobe.
- **Flexible Combination:** Modular design that easily adapts to different height requirements.
- **Customizable Sizing:** Support beams and stands can be cut to size, ensuring a perfect fit for your specific needs.

OPEN CLOSET SYSTEM SET 1 - SIZE W1600 X H2000MM

Product Code	Material	Finish	Applicable Height (mm)	Applicable Width (mm)	Applicable Depth (mm)
OC-1600-A-WH	Low carbon steel	White	2000-2800	1600	600
OC-1600-A-BLK	Low carbon steel	Black	2000-2800	1600	600

ACCESSORIES



INSTALLATION:



STEP 1: Measure and screw support beam to the wall.



STEP 2: Hook AA stand at the support beam track and fix to the wall.



STEP 3: Install the accessories parts.

* Dimensional data not binding. We reserve the right to alter specifications without notice.

TENCON



Features:

- **Easy Installation:** Designed for a quick and simple setup, saving you time and effort.
- **High Load-Bearing:** Sturdy and durable construction, providing reliable support for your everyday wardrobe.
- **Flexible Combination:** Modular design that easily adapts to different height requirements.
- **Customizable Sizing:** Support beams and stands can be cut to size, ensuring a perfect fit for your specific needs.

OPEN CLOSET SYSTEM SET 1 - SIZE W1800 X H2000MM

Product Code	Material	Finish	Applicable Height (mm)	Applicable Width (mm)	Applicable Depth (mm)
OC-1800-A-WH	Low carbon steel	White	2000-2800	1800	600
OC-1800-A-BLK	Low carbon steel	Black	2000-2800	1800	600

ACCESSORIES



INSTALLATION:

STEP 1:



Measure and screw support beam to the wall.

STEP 2:



Hook AA stand at the support beam track and fix to the wall.

STEP 3:



Install the accessories parts.

* Dimensional data not binding. We reserve the right to alter specifications without notice.