

# Tecma®

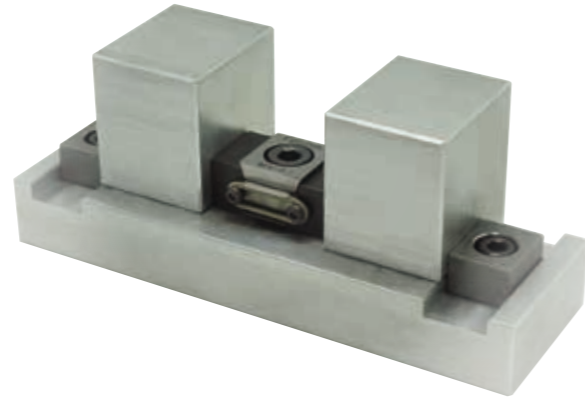
## MINI VISE 迷你虎鉗



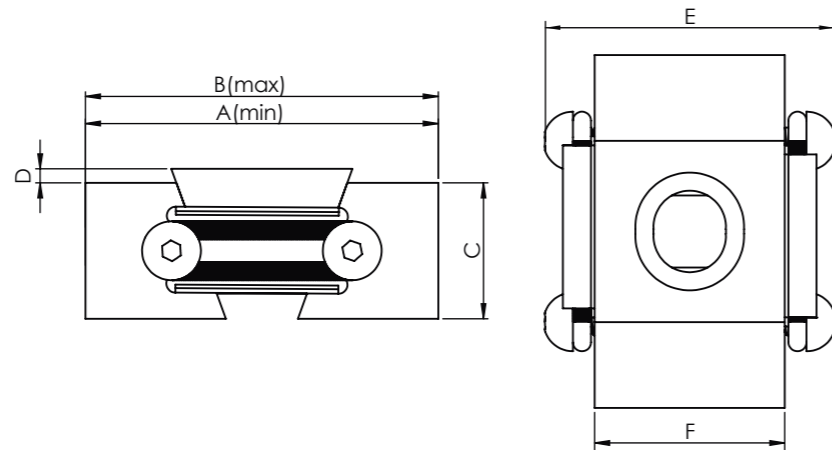
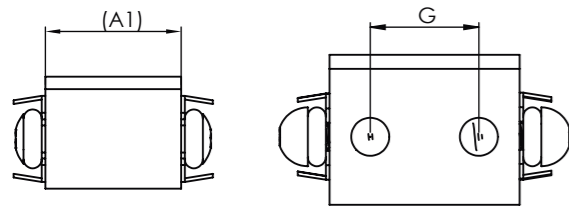
MV-AI



Illustration for example 操作示意圖



PAT.  
專利



MODEL	A	B	C	D	E	F	G
A0	24.5	26.5	11	1.5	21.5	15	
A1	39	43	15	1.5	32	21	12
A2	45	51	22	3	37	30	18

Feature :

特點 :

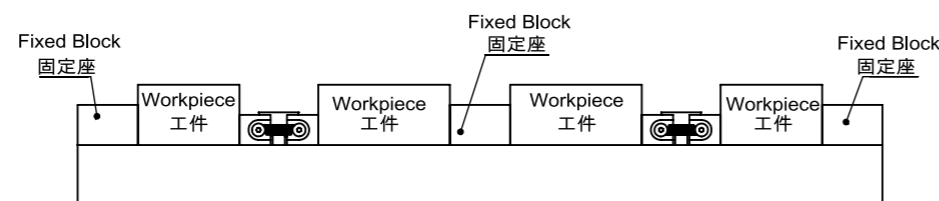
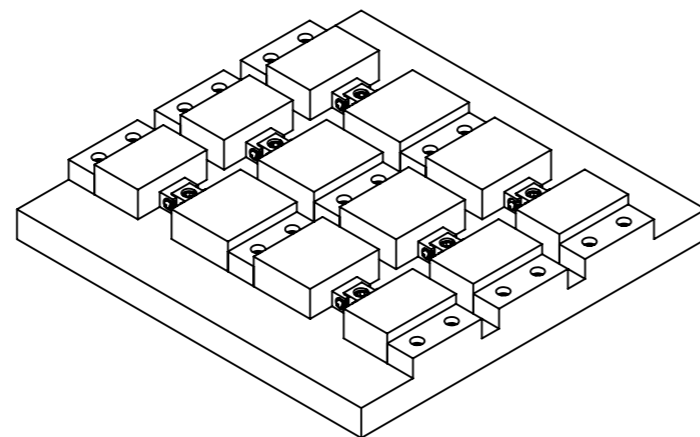
1. Mini-Vise reduces the time of changing other jig to cost down.  
使用迷你VISE可節省更換其他治具時間以降低成本。
2. Mini-Vise applies to different platform.  
迷你VISE可適用於不同的工作平台。

Auxiliary:

Accuracy of JIG comes from the accuracy of fixed block、workpiece structure and diameter dowel pin (work origin), the JIG its clamping force at the central point is an auxiliary.

輔助說明:

夾具的精準度來自固定塊、工件結構和定位銷(工作原點)的多方共同的精準度而定，夾具本身的趨向原點的夾持力只是輔助。



合鋼股份有限公司  
AUTO SUPER CO., LTD.

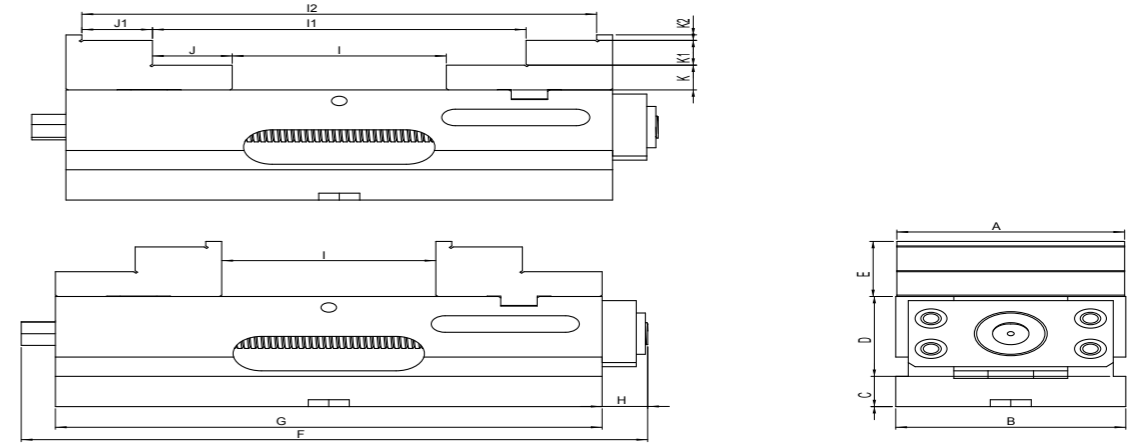
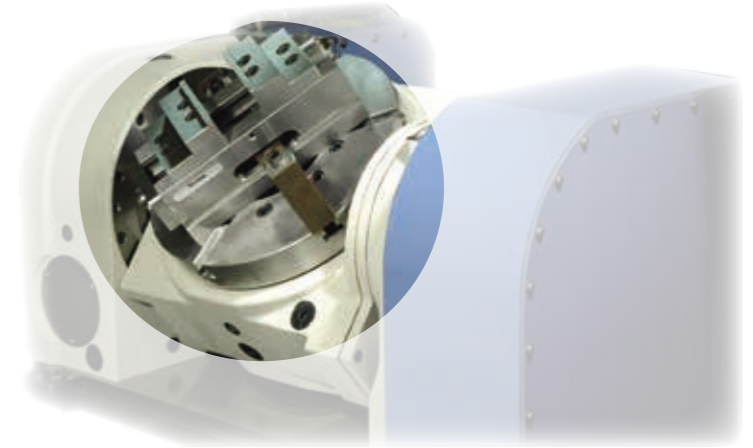
43643 台中市清水區中央北路2之26號  
No.2-26, Jhongyang N. Rd., Cingshuei Dist., Taichung City 43643, Taiwan  
Tel:886-4-26281790 Fax:886-4-26281792  
http://www.autosuper.com.tw  
E-mail:autosupe@ms15.hinet.net

# Tecma®

## SELF CENTRING VISE 同動求心虎鉗

SCV SERIES

PAT.



MODEL	A	B	C	D	E	F	G	H	I	I1	I2	J	J1	K	K1	K2
SCV-60	59	60	18	60	25	143	120	13	0~50	38~85		17.5		12.5	12.5	
SCV-100	100	101	22	80	40	260	240	20	0~90	70~160	134~222	35	31	18	18	4
SCV-160	160	161	22	105	55	440	370	70	0~200	86~285		42.5		27.5	27.5	

1. Self Centring Precision Vise is suitable for 4 and 5 Axis usage, either in horizontal or vertical machining.

同動式求心虎鉗適用四軸，五軸，立臥式CNC銑床之精密加工。

2. Vise precision of its center repetition position is  $\pm 0.01\text{mm}$ .

虎鉗中心重覆定位精度可保持 $\pm 0.01\text{mm}$ 。

3. Using high quality cast iron FCD 60 (GGG 60). Slideway has high frequency heat treatment at HRC 45° or more to keep the accuracy and its long use life.

虎鉗本體材質使用球狀石墨鑄鐵 FCD60 (GGG60)，滑軌經高週波熱處理 HRC45° 以上，可保持高耐磨性。

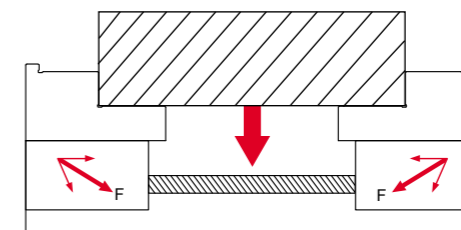
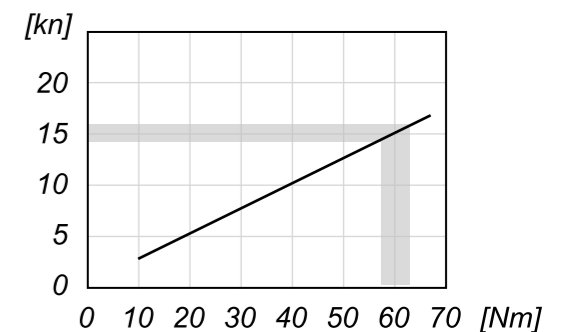
4. Vise hard jaw material is full Steel and heat treatment at HRC 55° or more.

Thanks for its good design to use both sides of jaw since it is exchangeable.

虎鉗鉗口採用全鋼材質，經熱處理硬度高達 HRC55° 以上，可拆換方向使用，變化性與互換性極佳。

5. Special design for the Self Centring Precision Vise to prevent work piece from bending during clamping and machining. Thus, it has the best solution in clamping the work piece. 虎鉗特殊的結構設計，夾持工件時所產生的下壓力能有效防止工件上浮情形，鎖固力極佳。

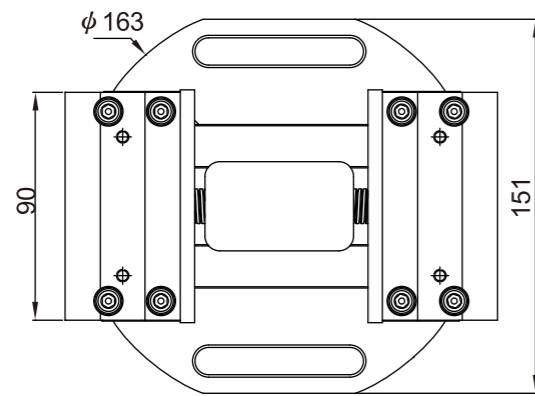
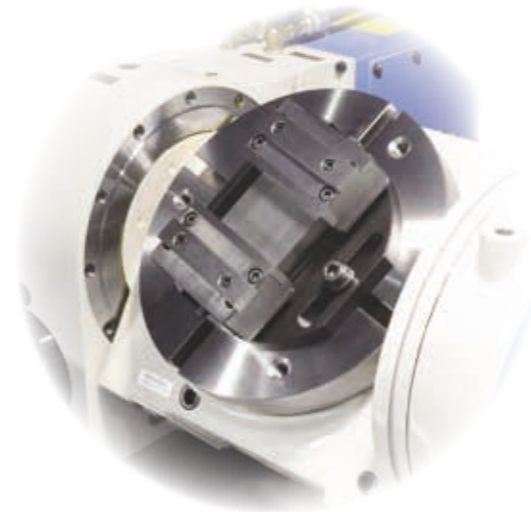
夾持曲線圖  
(CLAMPING CURVE)



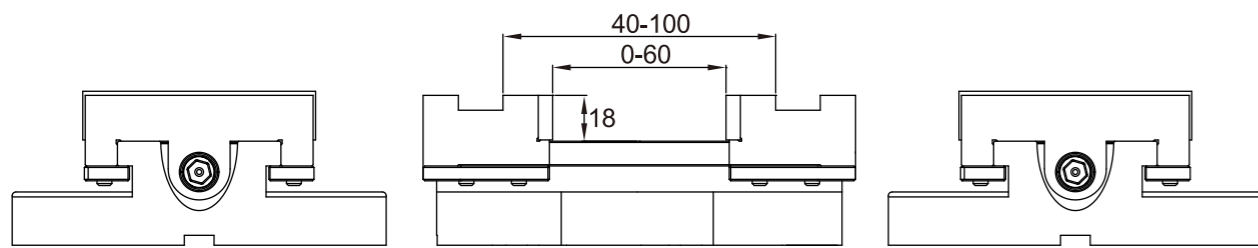
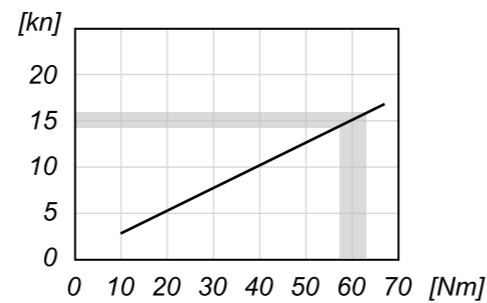
# Tecma® SELF CENTRING VISE

## SCVR-90 同動求心虎鉗

PAT.



夾持曲線圖 (CLAMPING CURVE)



1. Self Centring Precision Vise is suitable for 4 and 5 Axis CNC Rotary Table usage, either in horizontal or vertical machining.  
同動式求心虎鉗適用四軸，五軸，CNC分度盤，立臥式CNC銑床之精密加工。
2. Vise precision of its center repetition position is  $\pm 0.01\text{mm}$ .  
虎鉗中心重覆定位精度可保持 $\pm 0.01\text{mm}$ 。
3. Using high quality alloy steel. Slideway has high frequency heat treatment at HRC 45 or more to keep the accuracy and its long use life.  
虎鉗本體材質使用合金鋼，滑軌經高週波熱處理HRC45以上，可保持高耐磨性。
4. Vise hard jaw material is full Steel and heat treatment at HRC 55° or more.  
Owing to its good design to use both sides of jaw since it is exchangeable.  
虎鉗鉗口採用全鋼材質，經熱處理硬度高達HRC55° 以上，可拆換方向使用，變化性與互換性極佳。
5. Special design for the Self Centring Precision Vise to prevent work piece from bending during clamping and machining. Thus, it has the best solution in clamping the work piece.  
虎鉗特殊的結構設計，夾持工件時所產生的下壓力能有效防止工件上浮情形，鎖固力極佳。

# Tecma® Double-Lock Mechanical Vise

## SDV-100 雙夾機械式虎鉗

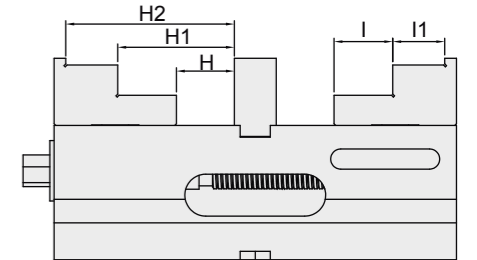
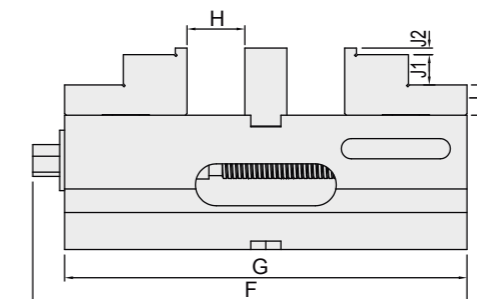
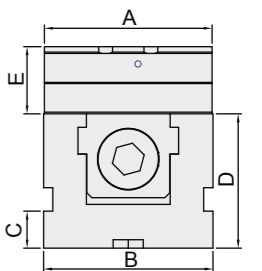
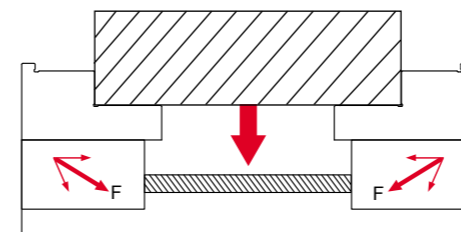
PAT.  
專利

**NEW**



### Features: 特點:

- Special device its can clamp two different size of workpiece at the same time.  
特殊裝置設計，在同一時間夾持大小不同的兩個工件。
- Take apart fixed block from the vise center so as to clamp larger workpiece.  
中心固定塊可拆卸用以夾持較大工件。
- There are fixed-height of vise body and jaws so that can be used in both the vertical and horizontal position.  
虎鉗本台及鉗口有固定高度，可以水平或垂直使用。
- Apply to small CNC machine center. Several vises can be combined and used together.  
適用於小型數控加工中心，可同時多台組合使用。
- Soft jaws is optional.  
可另外選購軟爪。
- Special angle lock design can prevent workpiece be floated during clamping and machining. Thus, it has the best solution in clamping the workpiece.  
特殊角固設計，夾持工件時產生下壓力能有效防止工件上浮，鎖固力極佳。



MODEL	A	B	C	D	E	F	G	H	H1	H2	I	I1	J	J1	J2
SDV-100	100	101	22	80	40	260	240	0-35	35-70	66-100	35	31	18	18	4