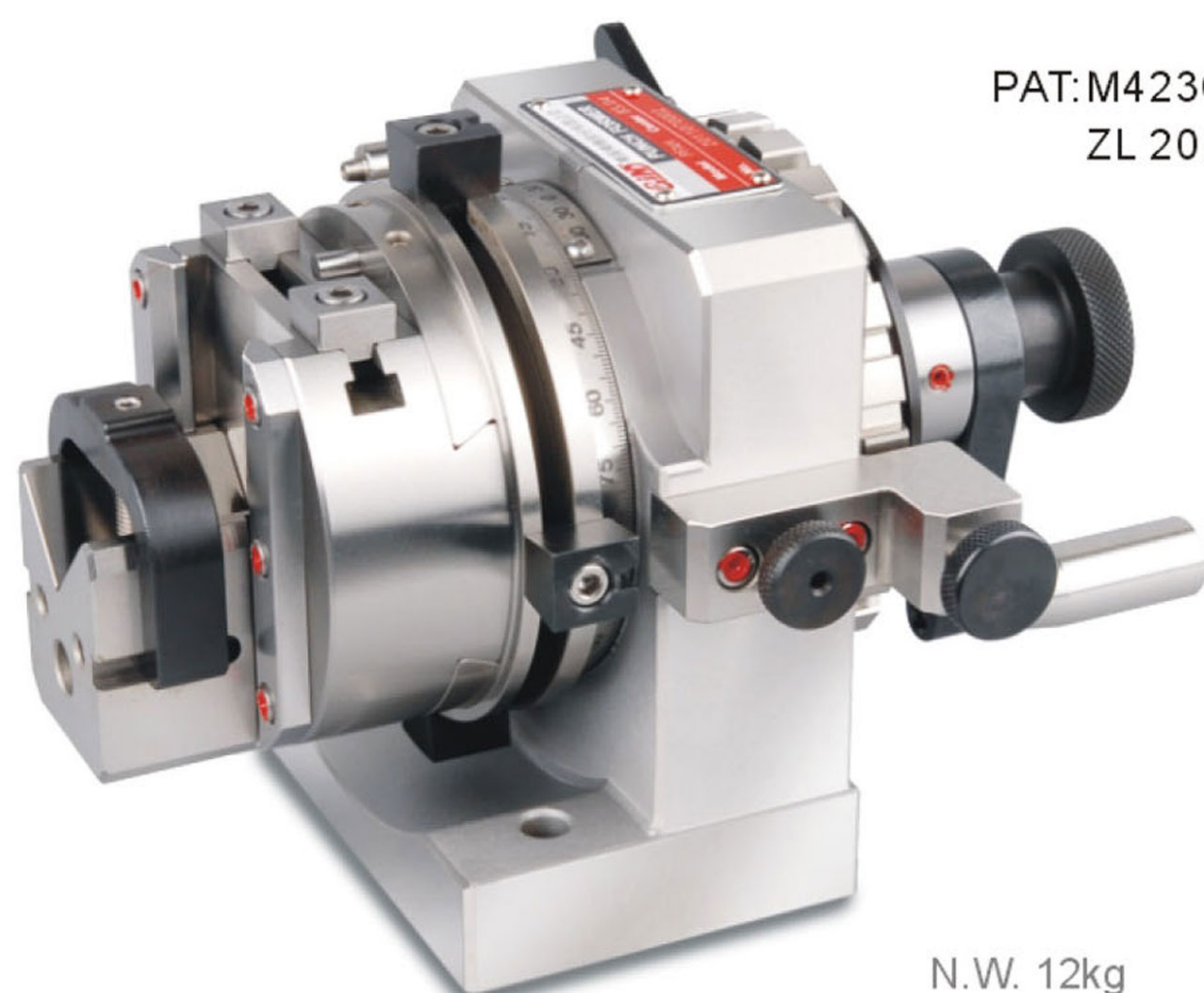


50020
PFH450
Precision Punch Former


PAT:M423023
ZL 2010 2 0190858.6

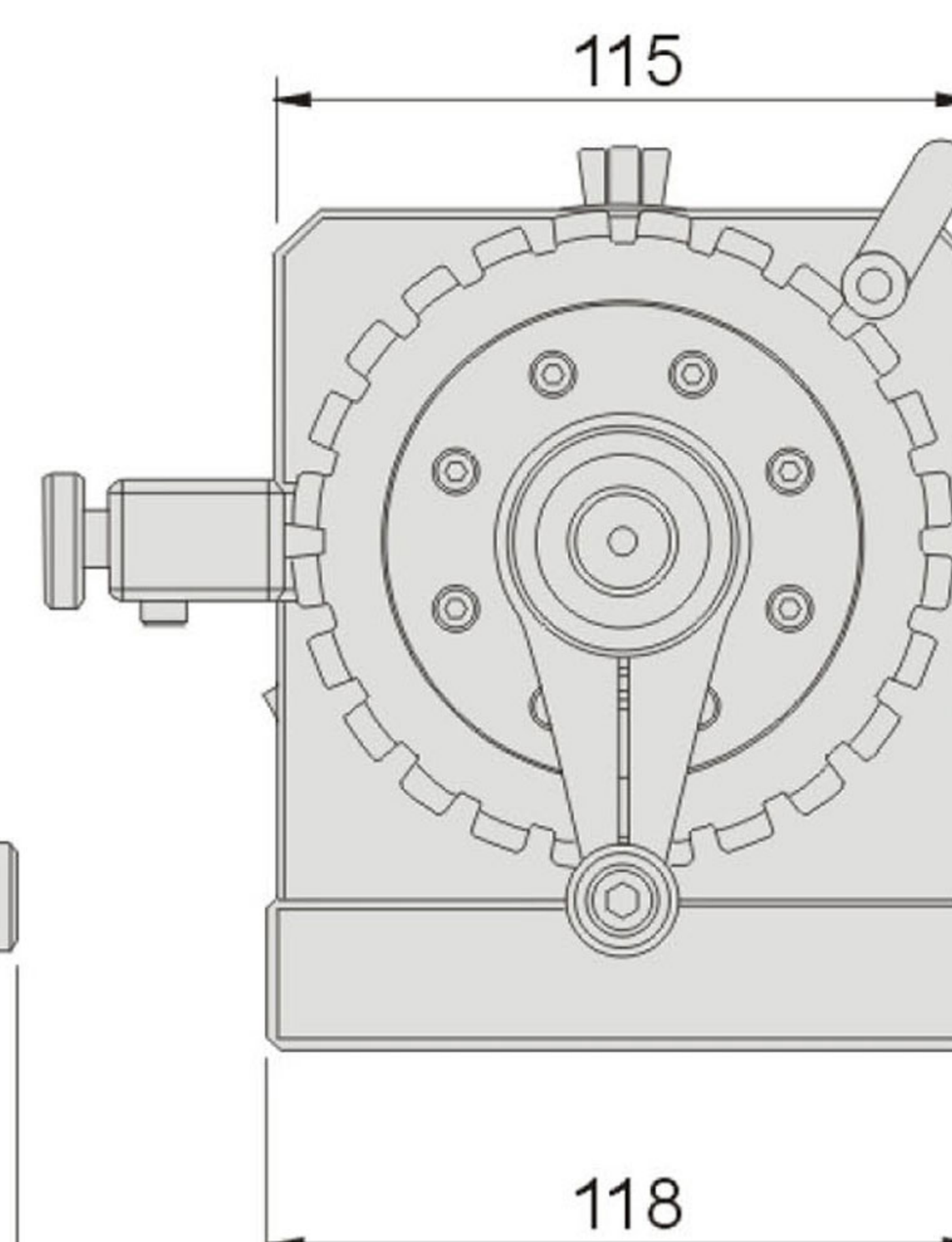
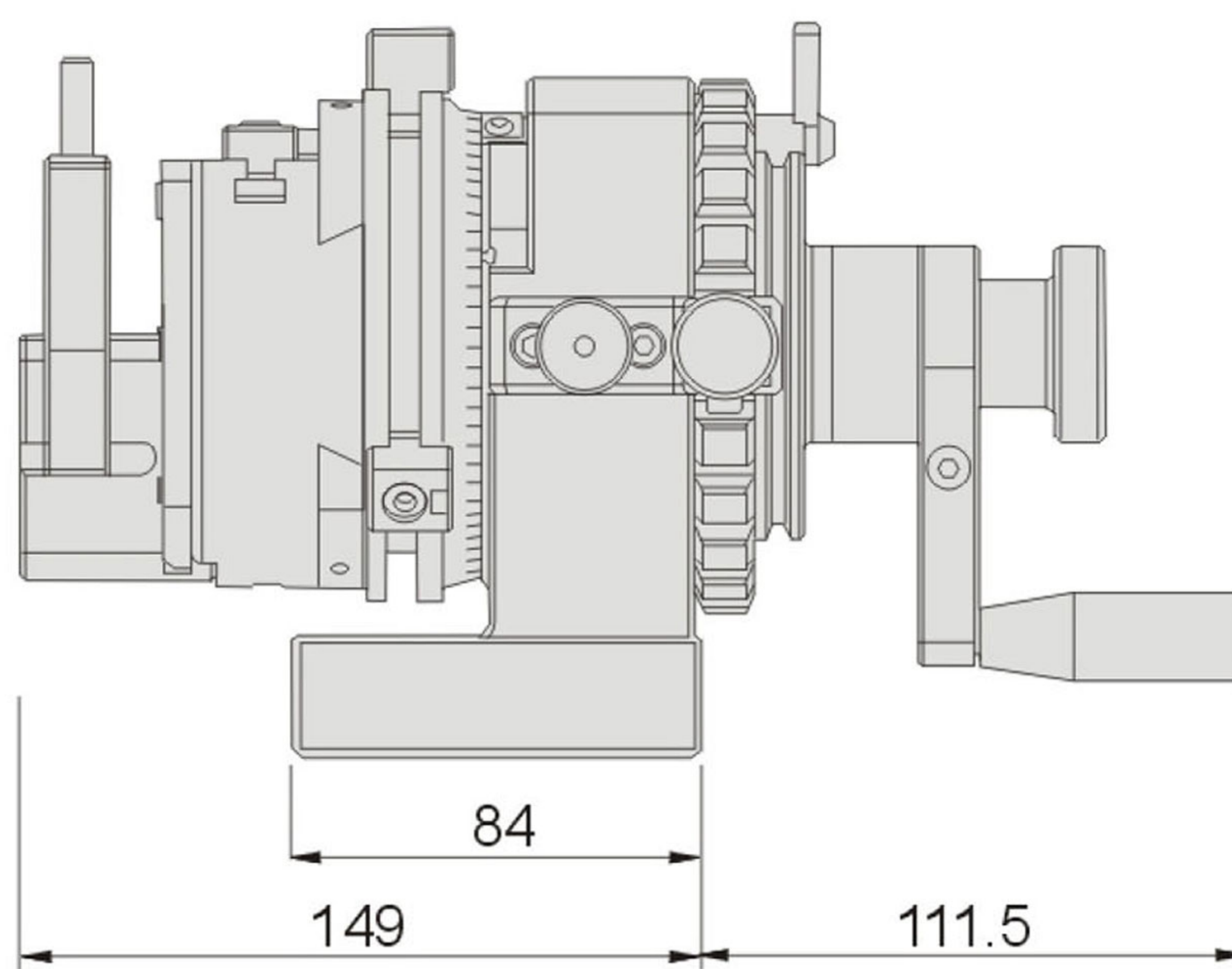
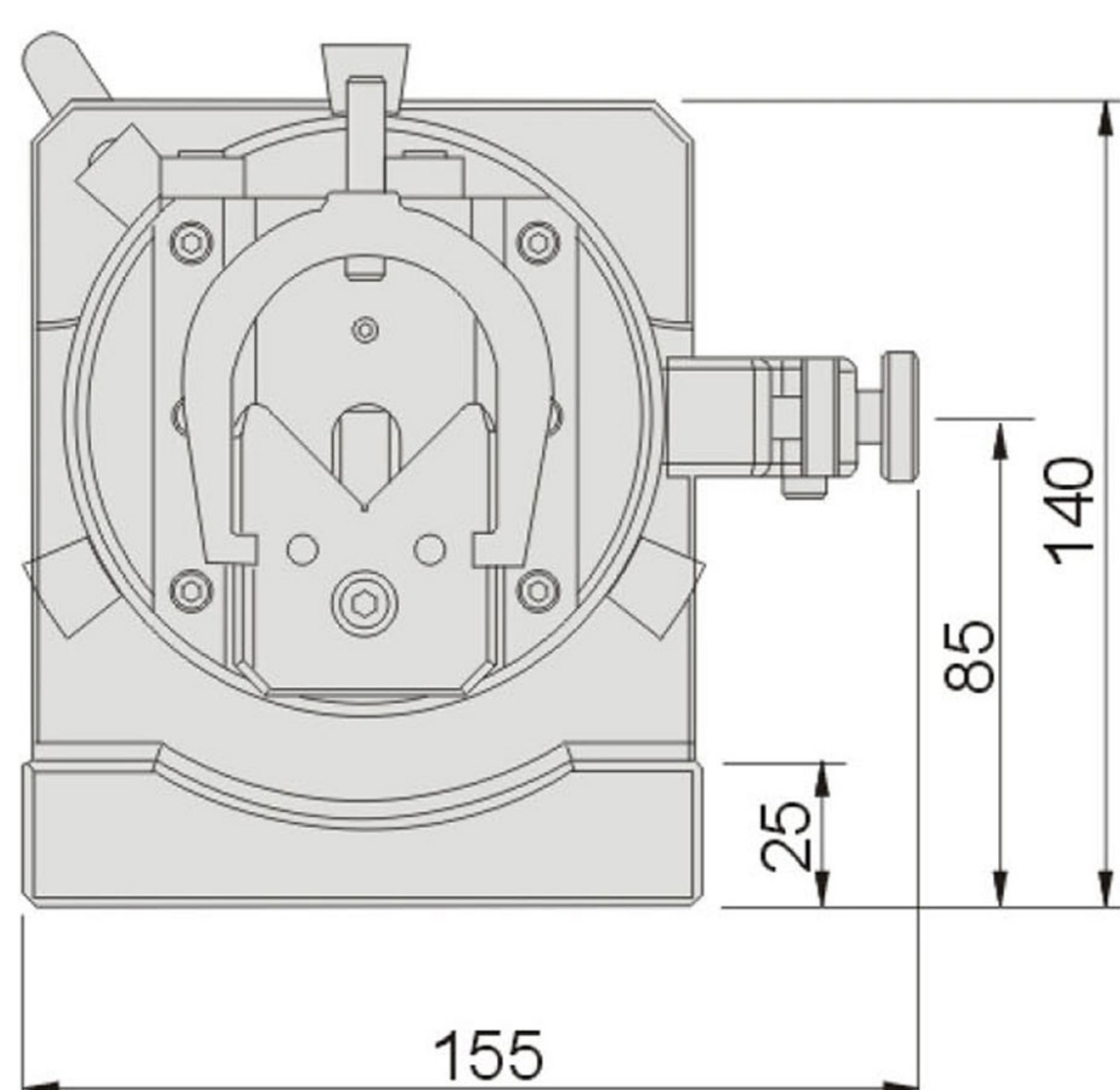
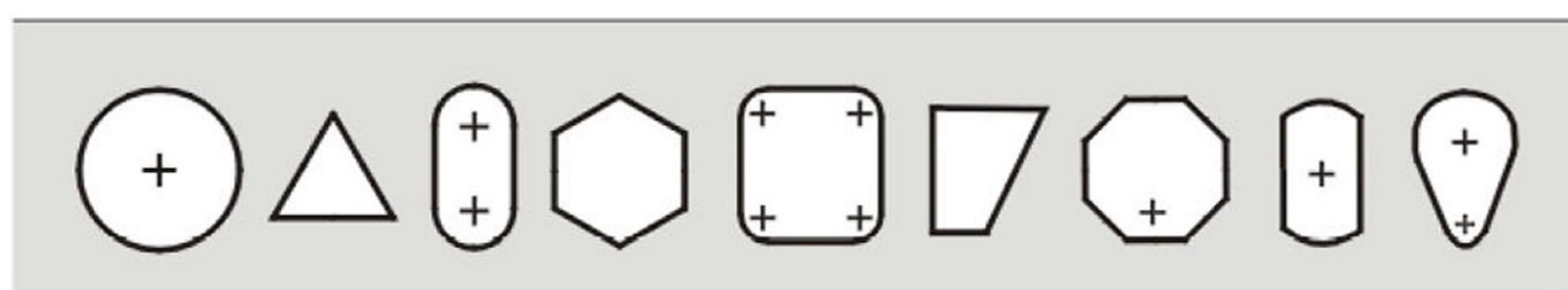
N.W. 12kg

Note :V-block is made of SKD11 in order to enhance hardness



- V block is adjustable for calibration even when small workpiece is clamped.
- Two clamp plates on both side of V block helps the consistent movement.
- Release the screw when make adjustable and lock with slight force.

Punch forming applications



Features :

- ▶ PFH350 Precision Punch Former has stronger compact structure as well as longer durability. This model is suitable for applying on surface grinding machine and EDM machines. It is capable of forming miscellaneous shapes of punches.
- ▶ V-block clamping design can accurately stabilize the workpieces and with fine-tuning function makes easier for setting center .
- ▶ Adopting high precision double bearing to achieve higher stability and accuracy, with times longer lifecisely then the conventional ones.
- ▶ Stopper design in position slot and easier for precisely stabilize polygonal punches.
- ▶ Made of stainless steel, rustless and maintain easy.

Main parameters:

| | |
|---------------------------------------|--------------|
| Center height | 85 ± 0.5mm |
| Clamping dia. range of V-block | Ø 3~38mm |
| Travel of V-block | 38mm |
| Slide plate horiztonal movement | ±18mm |
| Indexer tooth q'ty & accuracy | 24, 15° ± 5" |
| Clamping accuracy (50mm) | 0.005mm |

