

Stainless Tool Maker Vise

Material :SUS440

Parallelism:within 0.003mm/100mm

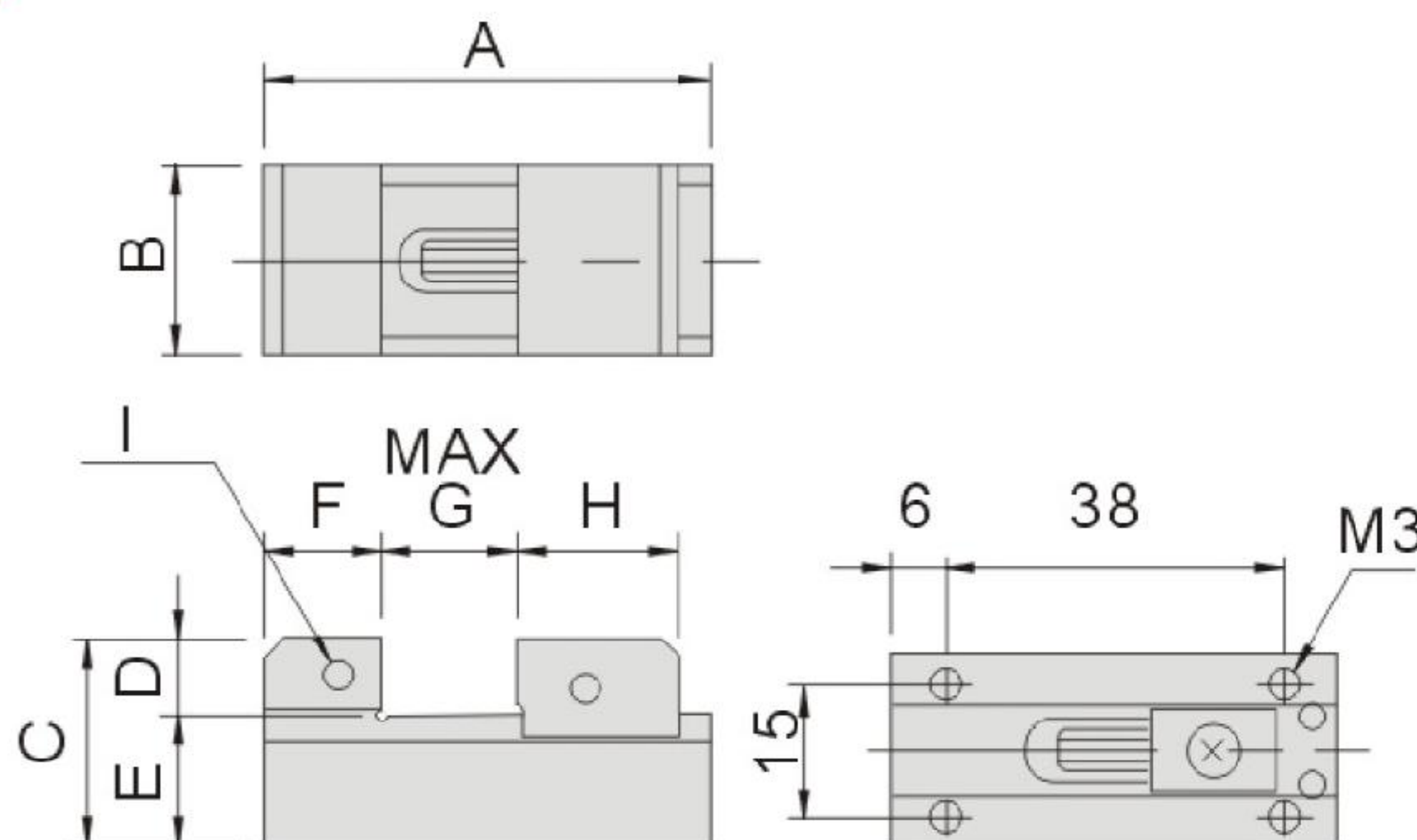
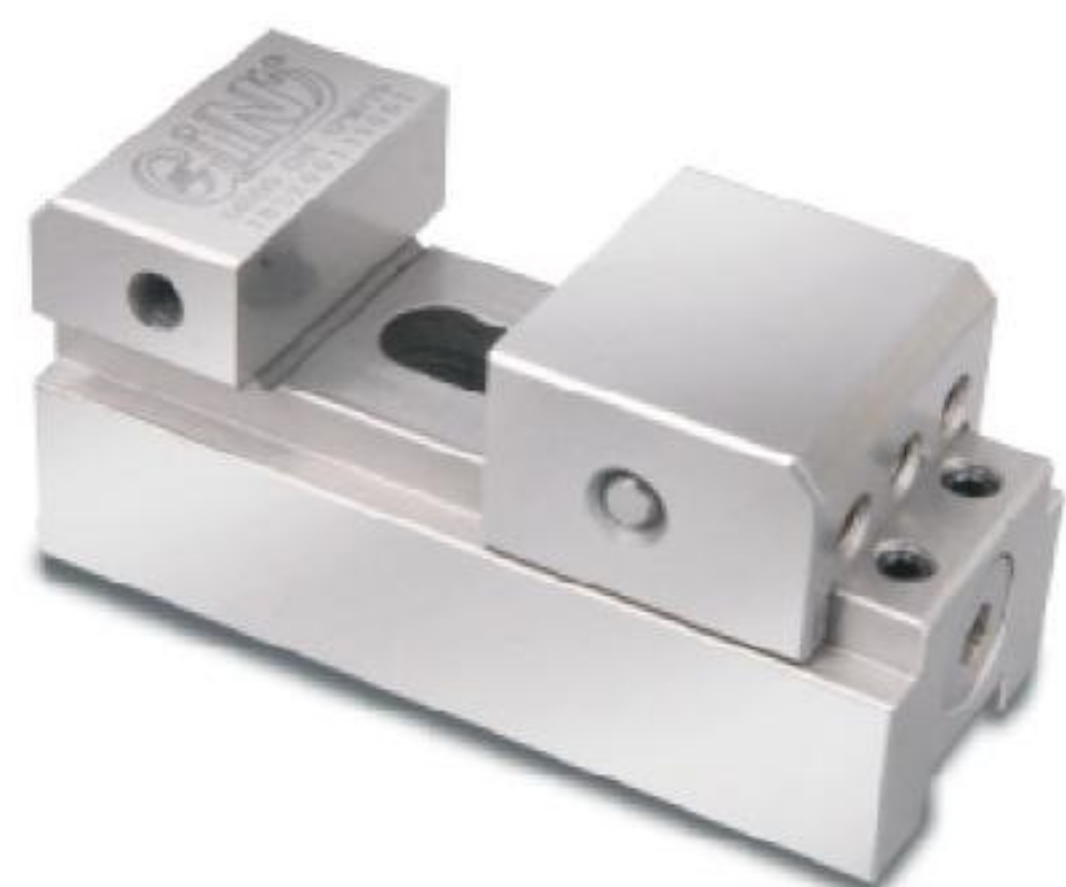
Hardness:HRC48°~55°

Squareness:within 0.003mm/100mm

Unit:mm

52700 VJ10

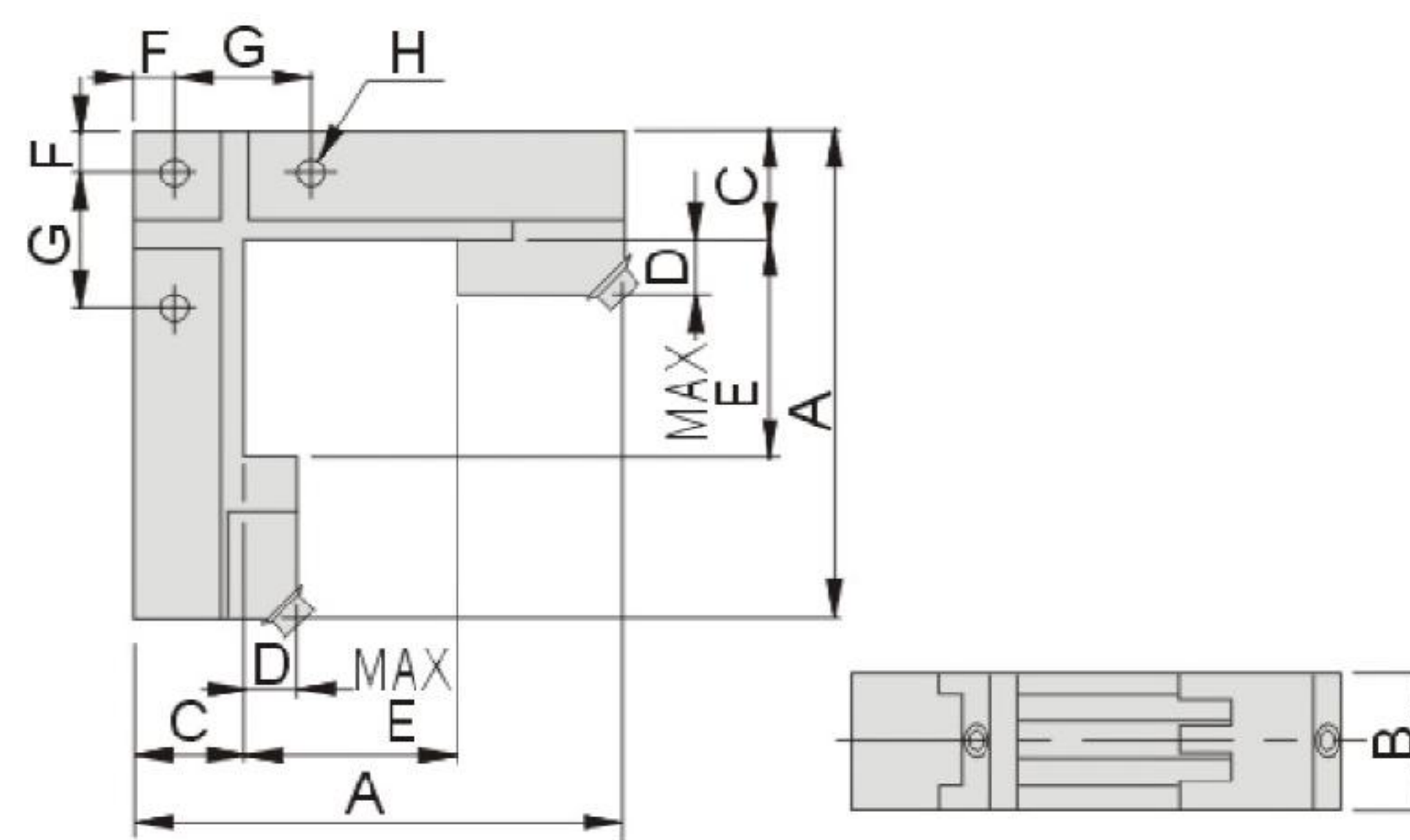
▲ A delicate vise and suitable for clamping precision workpiece



Spec	Model	VJ10
A		50
B		21
C		23.5
D		8.5
E		15
F		13
G		15
H		18
I		M3
N.W.		0.15kg

52715 VLW10

▲ Two way clamping and suitable for applying in EDM machine



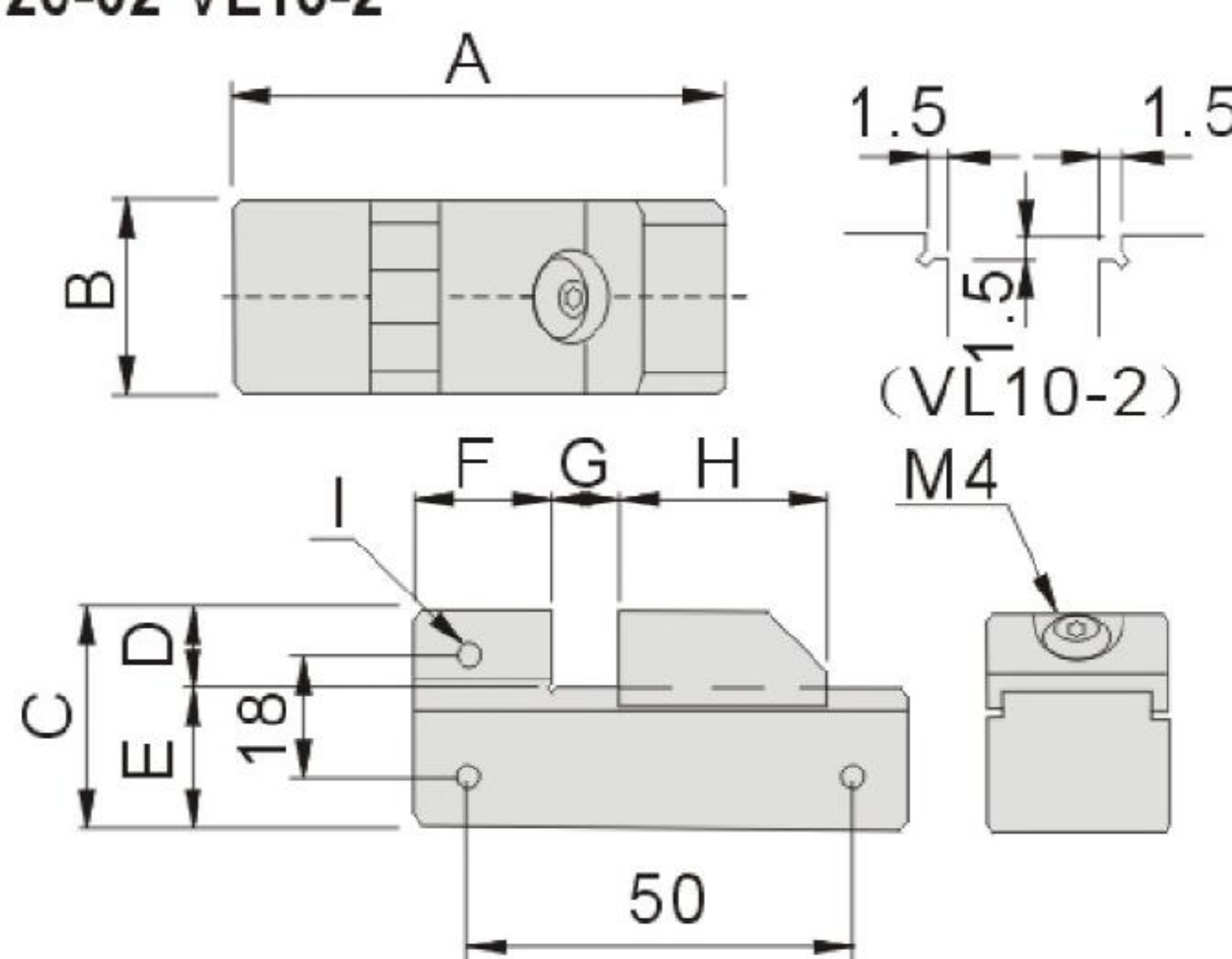
Spec	Model	VLW10
A		90
B		25
C		20
D		10
E		40
F		7.5
G		25
H		M5
N.W.		0.5kg

52720 VL10

▲ Compact version precision vise, suitable for small precision workpiece, apply by wrench.
 ▲ VL10-2 has step groove on jaws.



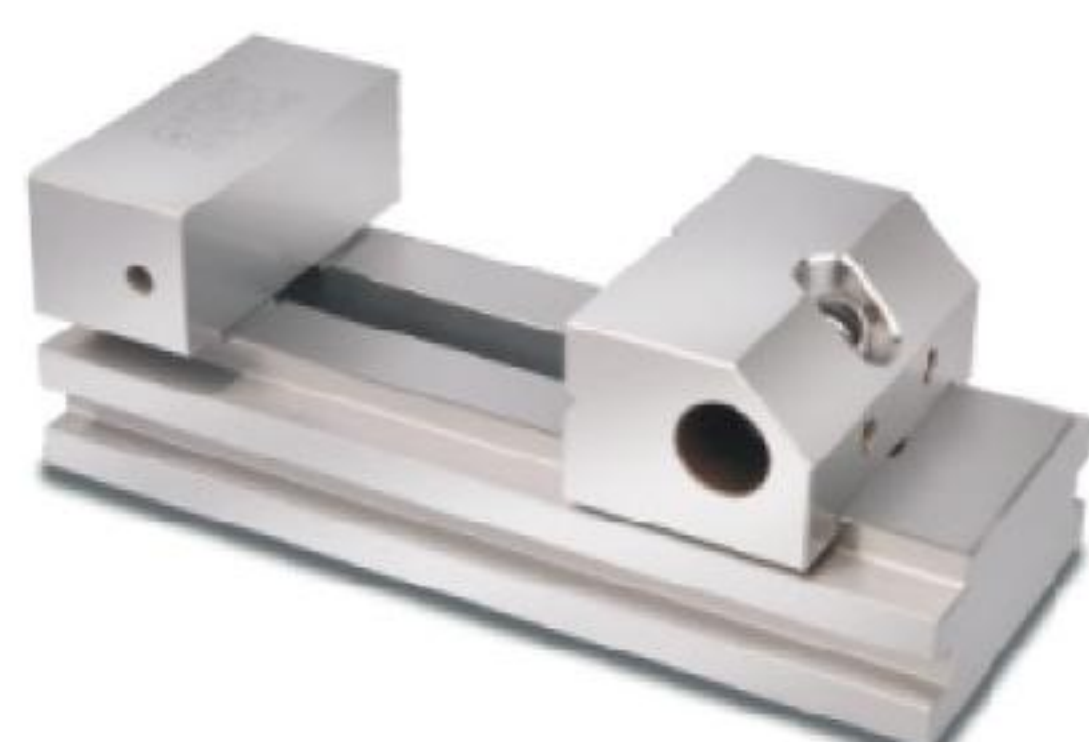
52720-01 VL10-1
 52720-02 VL10-2



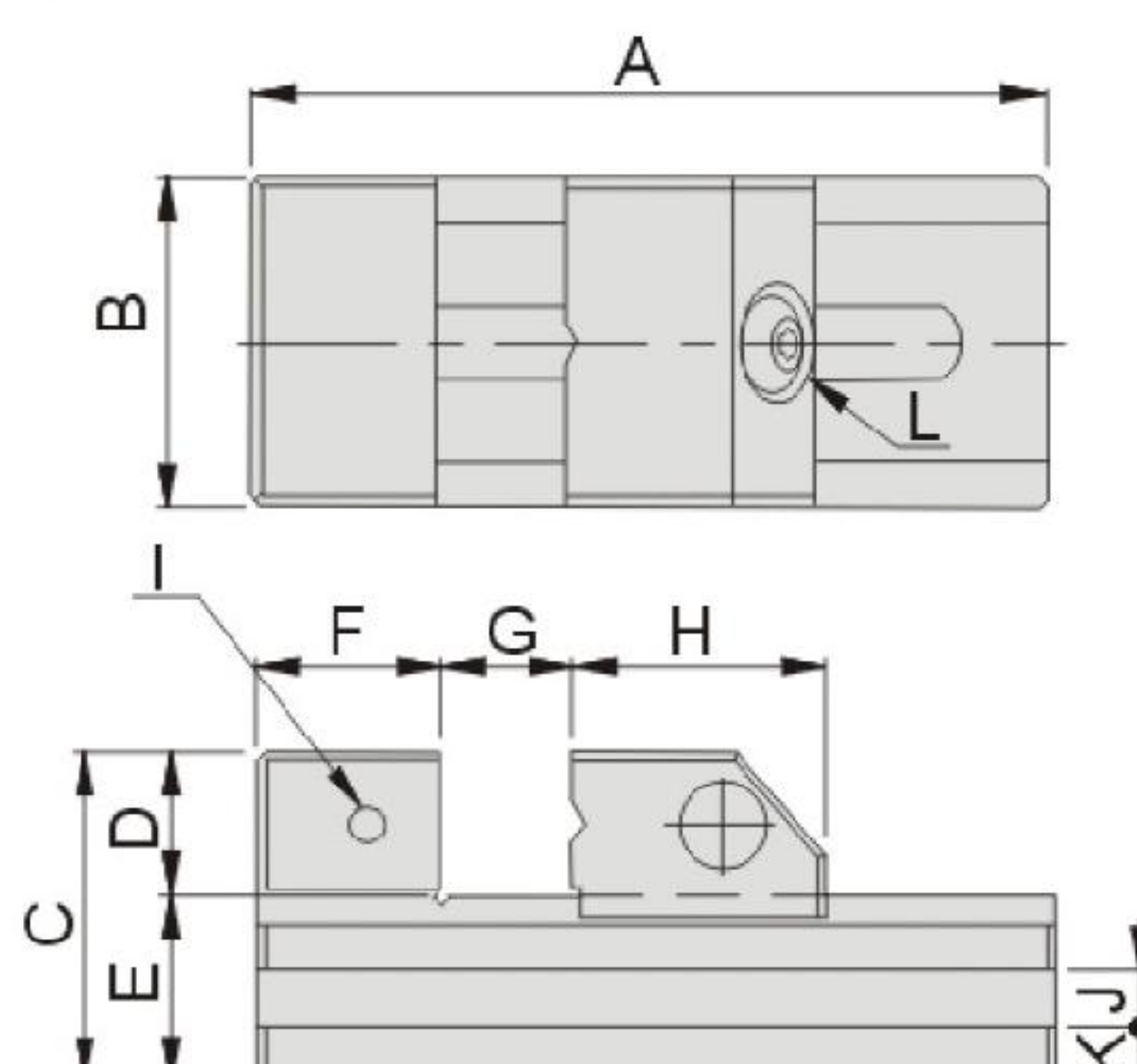
Spec	Model	VL10-1	VL10-2
A		65	65
B		25	25
C		32	32
D		12	12
E		20	20
F		20	20
G		20	20
H		25	25
I		M4	M4
N.W.		0.25kg	0.25kg

52725 VL20/30

▲ Suitable for high precision processing grinding / milling / EDM... apply by wrench to lock tight.



52725-20 VL20
 52725-30 VL30



Spec	Model	VL20	VL30
A		140	180
B		50	72
C		53	62
D		25	30
E		28	32
F		25	35
G		0~75	0~100
H		40	45
I		M6	M6
J(WXD)		6x5	8x7
K		8.5	9
N.W.		1.5kg	3.0kg