

Simple Indexing Spacer

65500

BS

Semi-universal Center(Dividing Head)



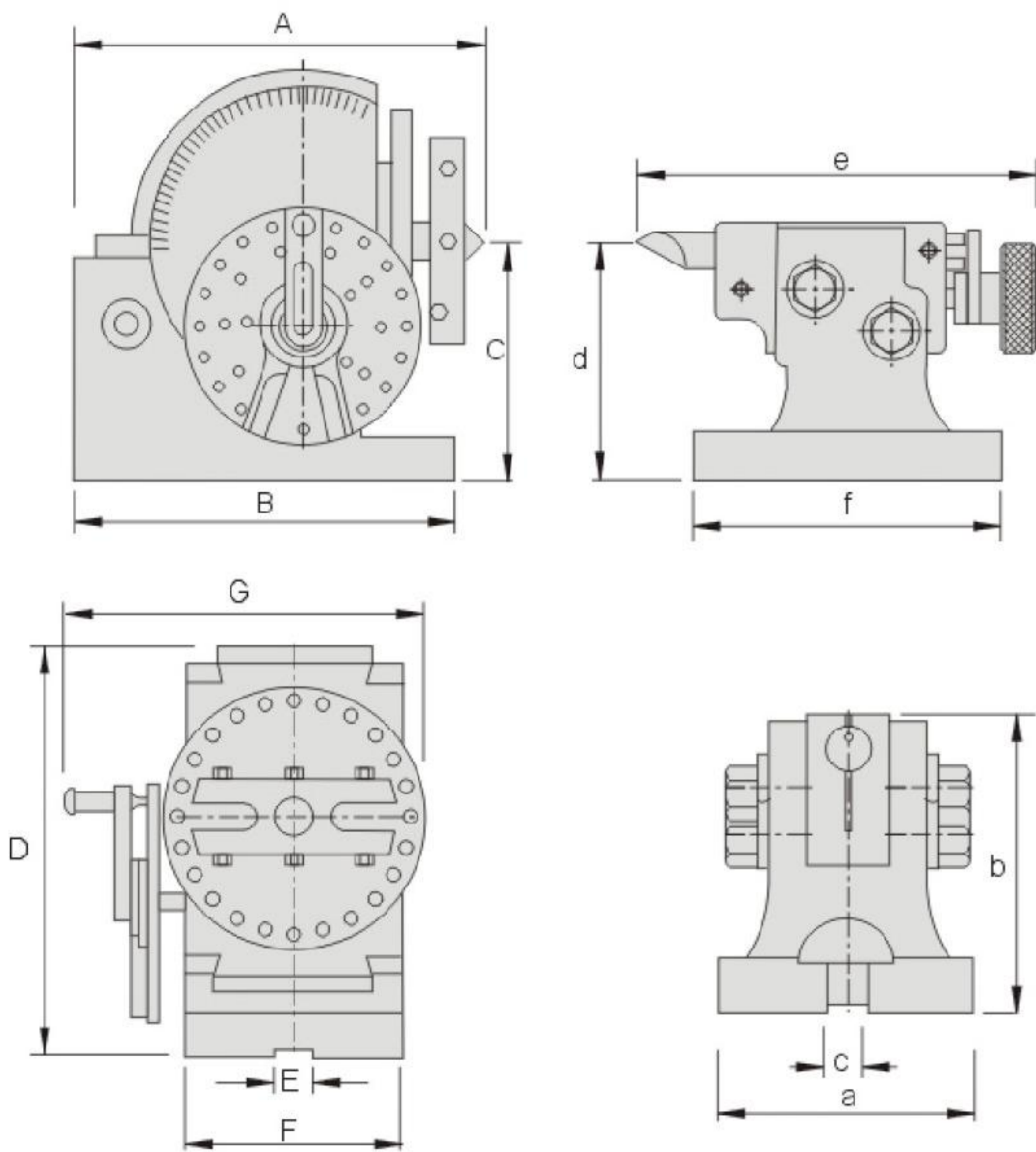
Features:

- ▶ Plain type of Universal Index Center and can be applied for direct or indirect dividing.
- ▶ No accessories needed for the differential dividing & spiral work.
- ▶ Same construction of the dividing head & tailstock as the Universal type ones.
- ▶ 24 holes on the direct index plate allows direct dividing in 2,3,4,6,8,12 & 24.
- ▶ Three plates for indirect dividing in any number from 2 to 50 and uncertain numbers up to 380. Are standard accessories
- ▶ Operation and service manual included with each package.

Application:



Optional Accessory:
4" or 5" 3-Jaw Chuck for BS-0
5" or 6" 3-Jaw Chuck for BS-1



SEMI-UNIVERSAL INDEX CENTER (DIVIDING HEAD) SPECIFICATION

Unit:mm

Order No.	Model	A	B	C	D	E	F	G	N.W.
65500-01	BS0	189	160	100	173	16	91	140	22kg
65500-02	BS1	293	210	128	220	16	114	156	36kg

TAILSTOCK SPECIFICATION

Unit:mm

Order No.	a	b	c	d	e	f	Center Taper	Diameter of Spindle hole
BS0	90	105	16	100	166	127	B&S No.7	18
BS1	108	134	16	128	184	150	B&S No.9	20

No. of holes of dividing plate (worm gear reduction ratio 1:40)

Unit:mm

No. of Holes	Plate A	Plate B	Plate C
	15	21	37
	16	23	39
	17	27	41
	18	29	43
	19	31	47
	20	33	49